

UNITED STATES
DEPARTMENT OF THE INTERIOR
GEOLOGICAL SURVEY

SUNDRY NOTICES AND REPORTS ON WELLS

(Do not use this form for proposals to drill or to deepen or plug back to a different reservoir. Use Form 9-331-C for such proposals.)

1. oil ☒ gas ☐ other
well well

2. NAME OF OPERATOR

Conoco Inc.

3. ADDRESS OF OPERATOR

P.O. Box 460 Hobbs, N.M. 88240

4. LOCATION OF WELL (REPORT LOCATION CLEARLY. See space 17 below.)

AT SURFACE: 1980' FSL & 660' FEL

AT TOP PROD. INTERVAL:

AT TOTAL DEPTH:

16. CHECK APPROPRIATE BOX TO INDICATE NATURE OF NOTICE, REPORT, OR OTHER DATA

REQUEST FOR APPROVAL TO:

TEST WATER SHUT-OFF ☐FRACTURE TREAT ☐SHOOT OR ACIDIZE ☐REPAIR WELL ☐PULL OR ALTER CASING ☐MULTIPLE COMPLETE ☐CHANGE ZONES ☐ABANDON* ☐(other) ☐

SUBSEQUENT REPORT OF:

RECEIVED

JAN 23 1980

(NOTE: Report results of multiple completion or zone change on Form 9-330.)

U. S. GEOLOGICAL SURVEY
HOBBS, NEW MEXICO

17. DESCRIBE PROPOSED OR COMPLETED OPERATIONS (Clearly state all pertinent details, and give pertinent dates, including estimated date of starting any proposed work. If well is directionally drilled, give subsurface locations and measured and true vertical depths for all markers and zones pertinent to this work.)*

MIRU 1-10-80. Tagged fill @ 6645' (125' fill). Set RBP @ 6220'. Spot 2 5X. sand on top of RBP. Spot 378 gal. 15% HCl-NE-FE acid from 5889' to 4649'. Perf. Blinbry formation @ 5667', 76', 80', 93', 5700', 13', 20', 24', 43', 46', 51', 56', 67', 72', 79', 5800', 08', 11', 14', 21', 29', 35', 48', 72', 77', 5882' (26 holes). Set CIBP @ 6090'. Dumped 131' pea gravel down csg. Spot 18' 10/20 sd. on top of gravel. PBD @ 5941' (top of sd.) Set treating pkr. @ 5469'. Break down perfs w/ 150 bbl. 2% KCl water. Frac. perfs w/ 513 bbl. gelled fluid, 336 bbls. 28% HCl-NE-FE. Flush & swab well. RHE w/ OPMA, 5N (set @ 5946') & 202 jts. 2 3/8" tbg. Ran pump & rods. Returned well to production.

Subsurface Safety Valve: Manu. and Type _____ Set @ _____ Ft.

18. I hereby certify that the foregoing is true and correct

SIGNED

John A. Dutterbeck

TITLE Admin. Supervisor

DATE 1/22/80

(This space for Federal or State office use)

APPROVED BY

CONDITIONS OF APPROVAL, IF ANY:

USGS-5

NMFU-4

FILE

TITLE

DATE

J. C. GOSSELINK, JR.
HOBBS, NEW MEXICO

*See Instructions on Reverse Side

-A Drinkard

771(3/31)

**NEW MEXICO OIL CONSERVATION COMMISSION
WELL LOCATION AND ACREAGE DEDICATION PLAT**

Form C-102
Supersedes C-128
Effective 1-1-65

All distances must be from the outer boundaries of the Section.

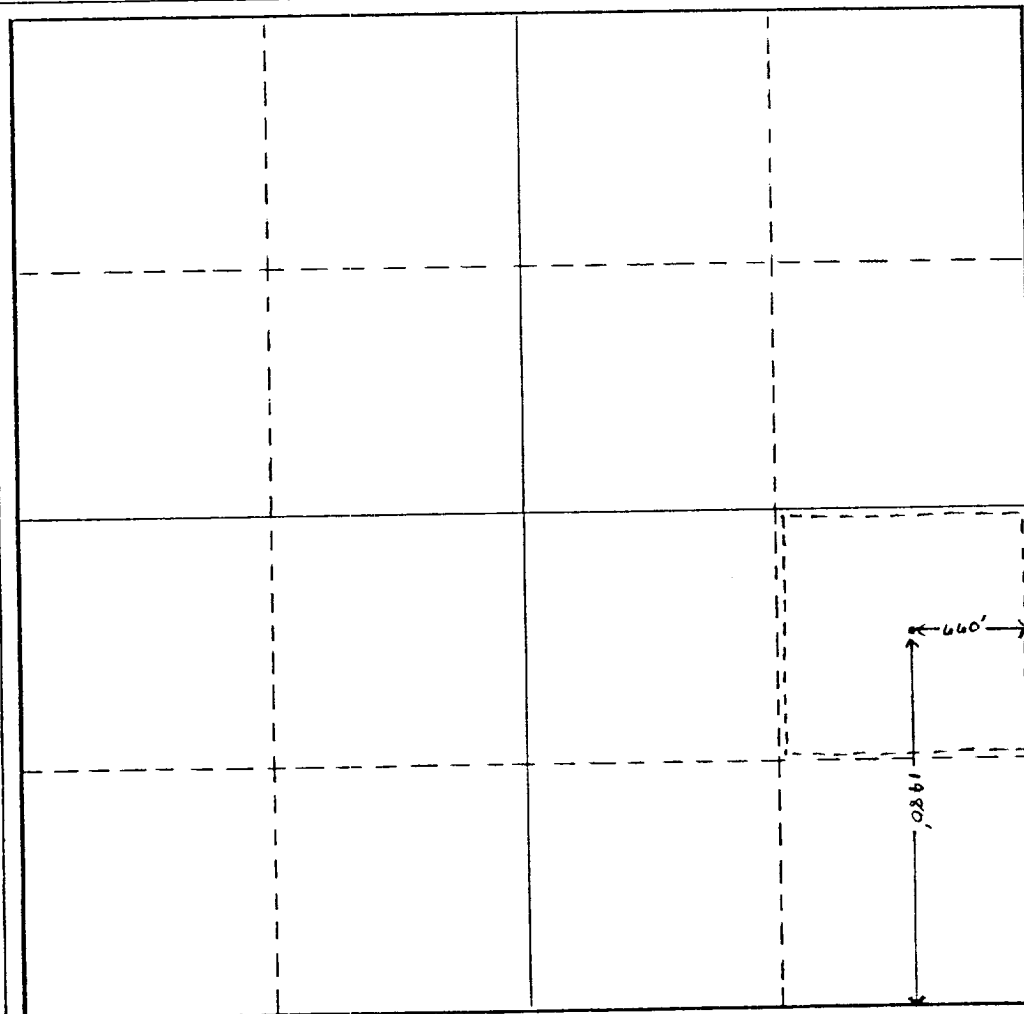
Operator Conoco Inc.			Lease Hawk B-1		Well No. 11
Unit Letter I	Section 8	Township 21S	Range 37E	County Lea	
Actual Footage Location of Well: 1980 feet from the South line and 660 feet from the East line					
Ground Level Elev.	Producing Formation Blinebry		Pool Blinebry Oil & Gas		Dedicated Acreage: 40 Acres

1. Outline the acreage dedicated to the subject well by colored pencil or hachure marks on the plat below.
2. If more than one lease is dedicated to the well, outline each and identify the ownership thereof (both as to working interest and royalty).
3. If more than one lease of different ownership is dedicated to the well, have the interests of all owners been consolidated by communitization, unitization, force-pooling, etc?

☐ Yes ☐ No If answer is "yes," type of consolidation _____

If answer is "no," list the owners and tract descriptions which have actually been consolidated. (Use reverse side of this form if necessary.) _____

No allowable will be assigned to the well until all interests have been consolidated (by communitization, unitization, forced-pooling, or otherwise) or until a non-standard unit, eliminating such interests, has been approved by the Commission.



CERTIFICATION

I hereby certify that the information contained herein is true and complete to the best of my knowledge and belief.

Name
W. A. Dutton
Position
Administrative Supervisor
Company
Conoco Inc.
Date
11/22/80

I hereby certify that the well location shown on this plat was plotted from field notes of actual surveys made by me or under my supervision, and that the same is true and correct to the best of my knowledge and belief.

Date Surveyed _____

Registered Professional Engineer and/or Land Surveyor

Certificate No. _____

0 330 660 990 1320 1650 1980 2310 2640 2000 1500 1000 500 0