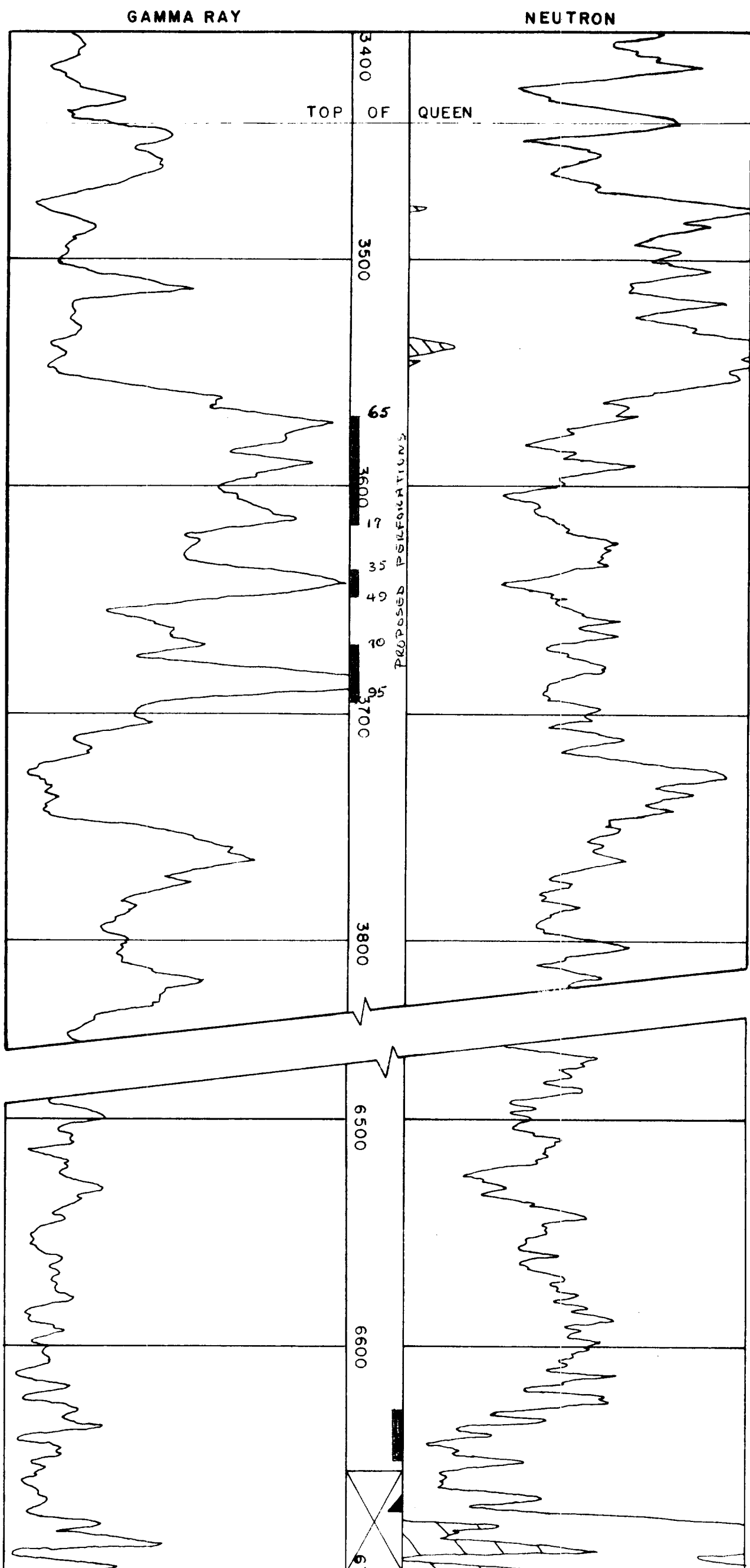


Elev. 3503' 1958 SEP 6 PM 2:43

CONTINENTAL OIL COMPANY



Set 13 3/8" csg. @ 238' w/260 sx (circ.), using 2 centralizers.  
Set 9 5/8" csg. @2856' w/1200 sx 4% Gel, 100 sx neat and 60  
Strata-Crete (circ), using 4 centralizers, 50 scratchers. Set  
7" csg. @ 6659' w/500 sx 4% Gel, 100 neat, and 25 Perlite  
(cement to 2836'), using 17 centralizers. 79 scratchers.

Swabbed thru open hole 1.5 bbls salt water, found to be produced from interval 6673'-6677'. Set retainer @ 6655' and squeezed off open hole section w/100 sx cement.

Perforated csg. 6628-6651' with packer at 6596' swabbed 35 B0 and 14 Bbl salt wtr/12 hours. Acidized w/1000 gals.

Completed for IP of 196 BOPD and 7 BWPD, based on 6-hour test, flowing thru 3/4" choke on 2" tubing with 85.3 MCF gas. GOR 435.

Pay Drinkard from 6628' to 6655'.

Markers:	Top of Brown Lime	-----	2820'
	Top of Glorieta	-----	5230'
	Top of Blinbry	-----	5675'
	Top of Tubb	-----	6203'
	Top of Drinkard	-----	6502'

Completed: 10-12-52.