

This form is not to
be used for reporting
packer leakage tests
in Northwest New Mexico

SOUTHEAST NEW MEXICO PACKER LEAKAGE TEST

Operator Exxon Corporation		Lease New Mexico "V" State			Well No. 8	
LOCATION OF WELL	Unit I	Sec. 10	Twp. 21-S	Rge. 37-E	County Lea	
	NAME OF RESERVOIR OR POOL		TYPE OF PROD. (Oil or Gas)	METHOD OF PROD. FLOW, ART LIFT	PROD. MEDIUM (Tbg or Csg)	CHOKE SIZE
Upper Compl.	Blinebry		Dead	-	-	-
Lower Compl.	Drinkard		Oil	Flow	Tbg.	.500

FLOW TEST NO. 1

Both zones shut-in at (hour, date): 6:30 A.M. 4/12/85

Well opened at (hour, date): 6:30 A.M. 4/13/85

	Upper Completion	Lower Completion
Indicate by (X) the zone producing		X
Pressure at beginning of test	0	750
Stabilized? (Yes or No)	Yes	Yes
Maximum pressure during test	0	750
Minimum pressure during test	0	0
Pressure at conclusion of test	0	150
Pressure change during test (Maximum minus Minimum)	-	750
Was pressure change an increase or a decrease?	---	(-)

Well closed at (hour, date): 6:30 A.M. 4/14/85

Total Time On
Production 24 Hrs.Oil Production
During Test: 2 bbls; Grav. 34.7Gas Production
During Test 38 MCF; GOR 19,035

Remarks:

(Continue on reverse side)

FLOW TEST NO. 2

Well opened at (hour, date):	11:00 A.M. 4/15/85	Upper Completion	Lower Completion
Indicate by (X) the zone producing		X	
Pressure at beginning of test		0	750
Stabilized? (Yes or No)		Yes	Yes
Maximum pressure during test		0	750
Minimum pressure during test		0	750
Pressure at conclusion of test		0	750
Pressure change during test (Maximum minus Minimum)		-	0
Was pressure change an increase or a decrease?		---	---
Well closed at (hour, date):	11:00 A.M. 4/16/85	Total Time On Production	24 Hrs.
Oil Production During Test:	- bbls; Grav. -	Gas Production During Test	- MCF; GOR -
Remarks:	This zone is dead.		

I hereby certify that the information herein contained is true and complete to the best of my knowledge.

Approved MAY 8 1985 19
New Mexico Oil Conservation Division

By Eddie W. Seay
Oil & Gas Inspector
Title _____

Operator Exxon Corporation
By E. L. McBee
Title District Operations Superintendent
Date 4/25/85

SOUTHEAST NEW MEXICO PACKER LEAKAGE TEST INSTRUCTIONS

1. A packer leakage test shall be commenced on each multiply completed well within seven days after actual completion of the well, and annually thereafter as prescribed by the order authorizing the multiple completion. Such tests shall also be commenced on all multiple completions within seven days following recompletion and/or chemical or fracture treatment, and whenever remedial work has been done on a well during which the packer or the tubing have been disturbed. Tests shall also be taken at any time that communication is suspected or when requested by the Division.
2. At least 72 hours prior to the commencement of any packer leakage test, the operator shall notify the Division in writing of the exact time the test is to be commenced. Offset operators shall also be so notified.
3. The packer leakage test shall commence when both zones of the dual completion are shut-in for pressure stabilization. Both zones shall remain shut-in until the well-head pressure in each has stabilized and for a minimum of two hours thereafter, provided however, that they need not remain shut-in more than 24 hours.
4. For Flow Test No. 1, one zone of the dual completion shall be produced at the normal rate of production while the other zone remains shut-in. Such test shall be continued until the flowing well-head pressure has become stabilized and for a minimum of two hours thereafter, provided however, that the flow test need not continue for more than 24 hours.

5. Following completion of Flow Test No. 1, the well shall again be shut-in, in accordance with Paragraph 3 above.

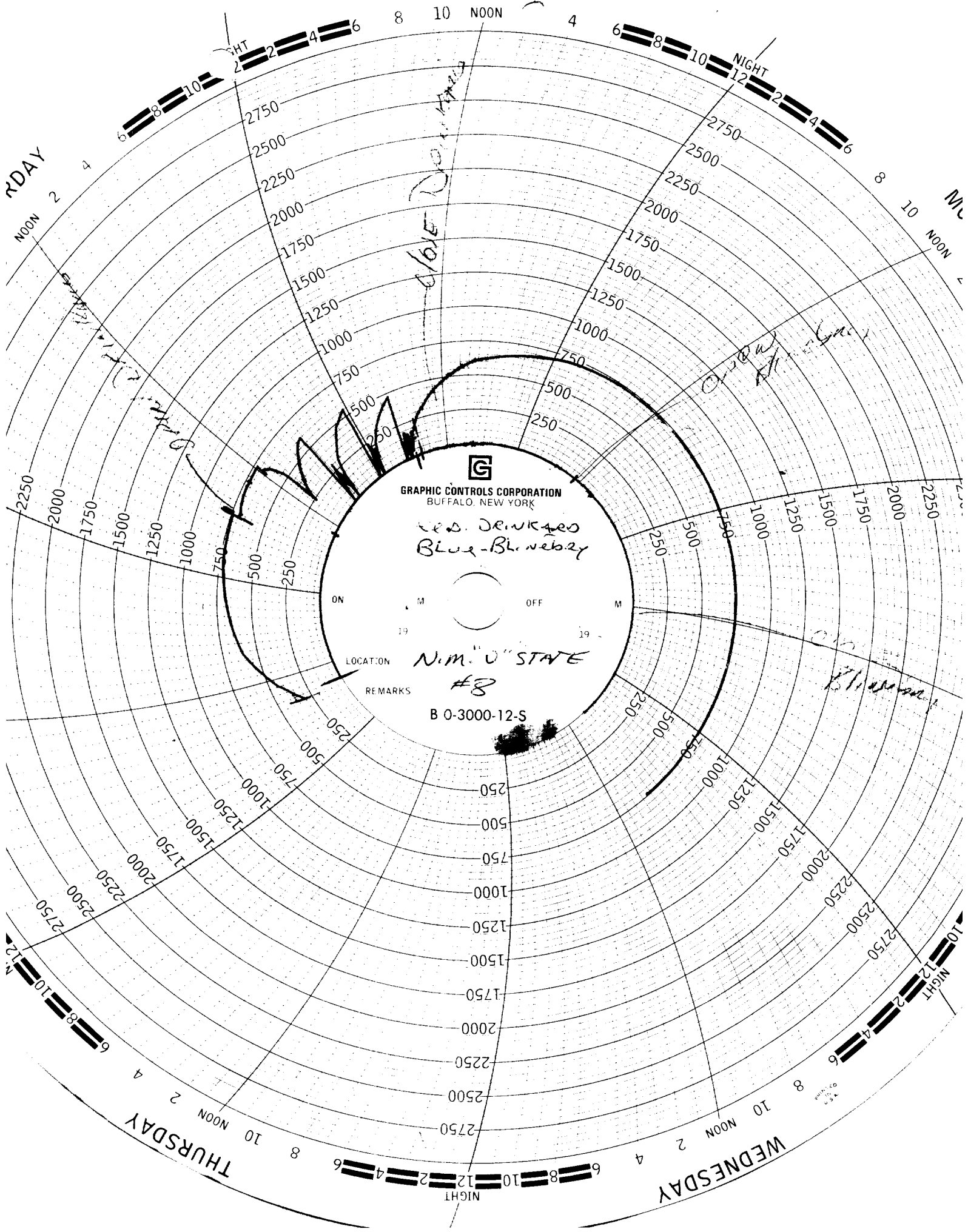
6. Flow Test No. 2 shall be conducted even though no leak was indicated during Flow Test No. 1. Procedure for Flow Test No. 2 is to be the same as for Flow Test No. 1 except that the previously produced zone shall remain shut-in while the previously shut-in zone is produced.

7. All pressures, throughout the entire test, shall be continuously measured and recorded with recording pressure gauges, the accuracy of which must be checked with deadweight tester at least twice, once at the beginning and once at the end, of each flow test.

8. The results of the above-described tests shall be filed in triplicate within 15 days after completion of the test. Tests shall be filed with the appropriate District Office of the New Mexico Oil Conservation Division on Southeast New Mexico Packer Leakage Test Form Revised 11-01-58, together with the original pressure recording gauge charts with all the deadweight pressures which were taken indicated thereon. In lieu of filing the aforesaid charts, the operator may construct a pressure versus time curve for each zone of each test, indicating thereon all pressure changes which may be reflected by the gauge charts as well as all deadweight pressure readings which were taken. If the pressure curve is submitted, the original chart must be permanently filed in the operator's office. Form C-116 shall also accompany the Packer Leakage Test Form when the test period coincides with a gas-oil ratio test period.

MAY 3 1985

HOOD



GRAPHIC CONTROLS CORPORATION
BUFFALO, NEW YORK

ves. Services
Blue-Bluesby

ON

M

OFF

M

LOCATION

N.M. STATE

REMARKS

#8

B 0-3000-12-S

THURSDAY

WEDNESDAY

FRIDAY

SATURDAY

SUNDAY

MONDAY

TUESDAY

WEDNESDAY

THURSDAY

GRAPHIC CONTROLS CORPORATION
BUFFALO, NEW YORK

LED. DRINKERS
Blue-Bl. neby

ON OFF

LOCATION

REMARKS

N.M. "O" STATE
#8

B 0-3000-12-S

FRIDAY

SATURDAY

SUNDAY

MONDAY

TUESDAY

WEDNESDAY

THURSDAY

