

Submit to Appropriate
District Office
State Lease—4 copies
Fee Lease—3 copies

State of New Mexico
Energy, Minerals and Natural Resources Department

Form C-102
Revised 1-1-89

OIL CONSERVATION DIVISION

DISTRICT I
P.O. Box 1980, Hobbs, NM 88240

DISTRICT II
P.O. Drawer DD, Artesia, NM 88210

DISTRICT III
1000 Rio Brazos Rd., Aztec, NM 87410

P.O. Box 2088
Santa Fe, New Mexico 87504-2088

JUL 29 1993

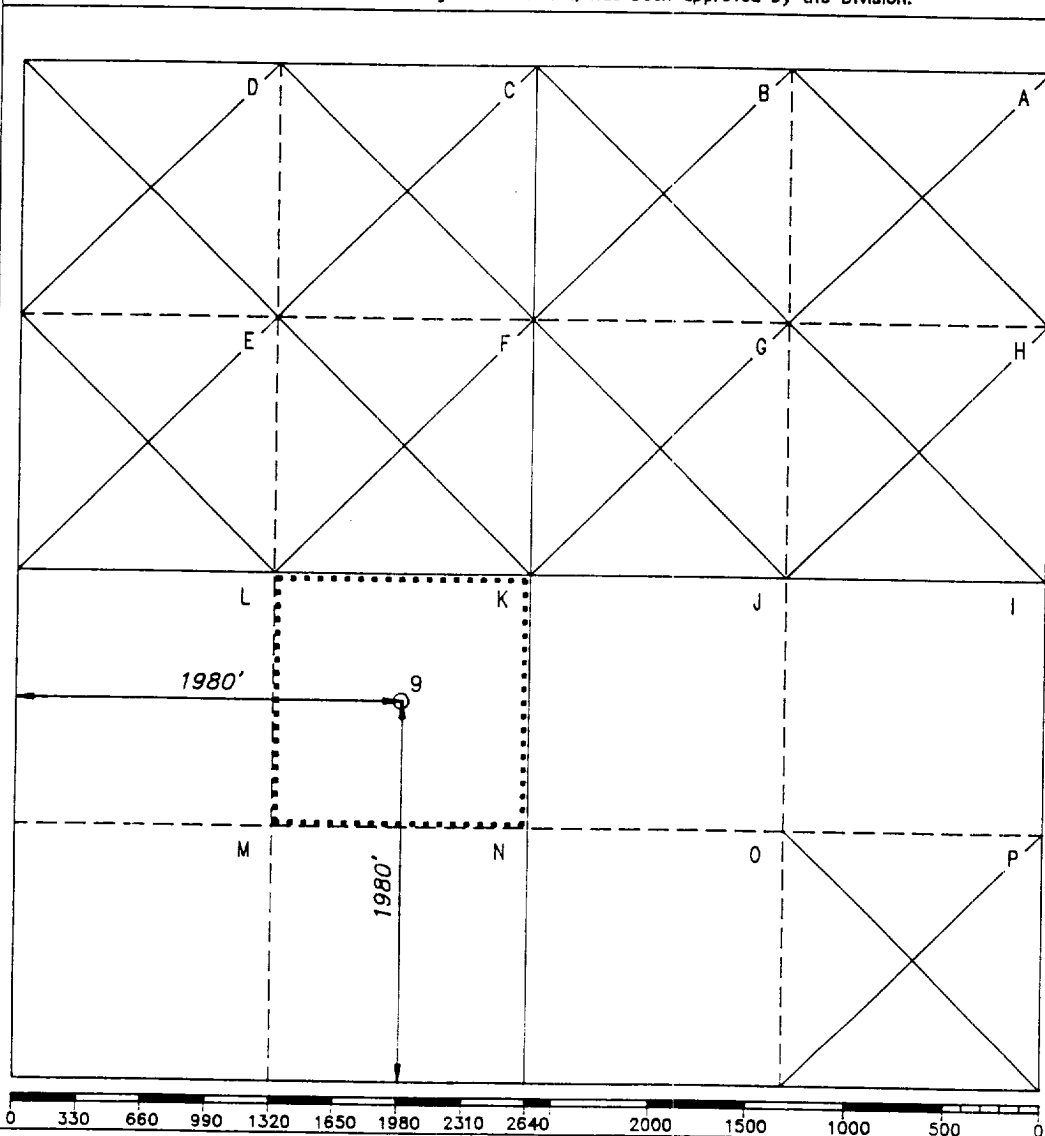
WELL LOCATION AND ACREAGE DEDICATION PLAT

All distances must be from the outer boundaries of the Section.

NGPA Permits

Operator Exxon Corporation			Lease NEW MEXICO "V" STATE		Well No. 9
Unit Letter K	Section 10	Township 21 SOUTH	Range 37 EAST	NMPM	County LEA
Actual Footage Location of Well: 1980 feet from the SOUTH line and 1980 feet from the WEST line.					
Ground level Elev. 3466' DF	Producing Formation GRAYBURG		Pool WILDCAT		Dedicated Acreage: 40 Acres

- Outline the acreage dedicated to the subject well by colored pencil or hatchure marks on the plat below.
- If more than one lease is dedicated to the well, outline each and identify the ownership thereof (both as to working interest and royalty).
- If more than one lease of different ownership is dedicated to the well, have the interest of all owners been consolidated by communization, unitization, force-pooling, etc?
☐ Yes ☐ No If answer is "yes", type of consolidation _____
If answer is "no", list the owners and tract descriptions which have actually been consolidated. (Use reverse side of this form if necessary.) _____
No allowable will be assigned to the well until all interests have been consolidated (by communization, unitization, forced-pooling, or otherwise) or until a non-standard unit, eliminating such interest, has been approved by the Division.



OPERATOR CERTIFICATION

I hereby certify that the information
contained herein is true and complete to the
best of my knowledge and belief.

Signature C.H. Harper
Printed Name
C.H. HARPER
Position
PERMITS SUPERVISOR
Company
Exxon Corporation
P.O. Box 1600-Midland, Tx.-79702
Date

SURVEYOR CERTIFICATION

I hereby certify that the well location
shown on this plat was plotted from field
notes of actual surveys made by me or
under my supervision, and that the same
is true and correct to the best of my
knowledge and belief.

Date Surveyed
12/21/51

Signature & Seal of
Professional Surveyor

Certificate No.

5 Miles NORTH of EUNICE, New Mexico.

C.E. File No. A10586f