

UNITED STATES
DEPARTMENT OF THE INTERIOR
BUREAU OF LAND MANAGEMENT

FORM APPROVED
Budget Bureau No. 1004-0135
Expires: March 31, 1993

SUNDRY NOTICES AND REPORTS ON WELLS

Do not use this form for proposals to drill or to deepen or reentry to a different reservoir.
Use "APPLICATION FOR PERMIT—" for such proposals

5. Lease Designation and Serial No.

NM 0025120

6. If Indian, Allottee or Tribe Name

SUBMIT IN TRIPLICATE

Type of Well

☒ Oil Well ☐ Gas Well ☐ Other

7. Name of Operator *Hendrix Drilling Co.*
Conoco, Inc.

8. Address and Telephone No.
10 Desta Dr. Ste 100W, Midland, TX 79705

9. Location of Well (Footage, Sec., T., R., M., or Survey Description)

1715' FNL & 409' FEL, "H"
Sec. 10, T-21S, R-37E

7. If Unit or CA, Agreement Designation

Hawk B-10

8. Well Name and No.

9. API Well No.

3002506459

10. Field and Foot of Exploratory Area

11. County or Parish, State

Lea, NM

CHECK APPROPRIATE BOX(S) TO INDICATE NATURE OF NOTICE, REPORT, OR OTHER DATA

TYPE OF SUBMISSION

- ☒ Notice of Intent
☐ Subsequent Report
☐ Final Abandonment Notice

TYPE OF ACTION

- ☒ Abandonment
☐ Recompletion
☐ Plugging Back
☐ Casing Repair
☐ Altering Casing
☐ Other

- ☐ Change of Plans
☐ New Construction
☐ Non-Routine Fracturing
☐ Water Shut-Off
☐ Conversion to Injection
☐ Dispose Water

(Note: Report results of routine completion on Well Completion or Recompletion Report and Log form.)

13. Describe Proposed or Completed Operations (Clearly state all pertinent details, and give pertinent dates, including estimated date of starting any proposed work. If well is directionally drilled, give subsurface locations and measured and true vertical depths for all markers and zones pertinent to this work.)*

It is proposed to plug and abandon this well according to the following procedure:

1. POOH w/prod equipment.
2. RIH w/bit & scraper to 6408' (pkr @ 6408').
3. RIH w/5-1/2" CIBP & set @ 6400'.
4. Load hole w/185 bbls 10 ppg PA mud consisting of 10 ppg brine w/25 lbs of gel per bbl.
5. Pump 15 sx cmt from 6252-6400'. Displace w/38 bbls of 10 ppg PA mud.
6. Perf csg @ 3005' w/4 JSPP. Est. circ & pump 30 sx cmt @ 2950-3050'. Displace w/18 bbls of 10 ppg PA mud.
7. Perf csg @ 180' w/4 JSPP. Est. circ & pump 110 sx cmt @ 180-0'.
8. Cut off csg strings 3' below surface. Fill csg w/suitable material to surf.
9. Cover wellbore w/metal plate & erect P&A marker.

RECEIVED
JAN 25 10 51 AM '93

14. I hereby certify that the foregoing is true and correct

Signature *David R. Glass*

Title Sr. Conservation Coordinator

Date 01/22/93

(This space for Federal or State office use)

(ORIG. SGD.) DAVID R. GLASS

Approved by

Title

Date 2-4-93

Conditions of approval, if any:

Well: Hawk B-10 No. 1

Location:

1715' FNL & 409' FEL
Sec. 10, T-21S, R-37E
Lea County, New Mexico

Casing:

Surface - 10-3/4" @ 180' w/ 150 sx (circ)
Intermediate - 7-5/8" @ 3005' w/ 900 sx (TOC: 1415)
Production - 5-1/2" 15.5 # @ 6453' w/ 250 sx (TOC: 4060)
Misc Info: 5-1/2" American packer @ 6408'

Safety Notes:

General:

1. A TAILGATE SAFETY MEETING SHALL BE HELD PRIOR TO COMMENCING ANY WORK.
2. REVIEW VENDOR'S WELLSITE SAFETY PROCEDURES IN ADDITION TO CONOCOS APPLICABLE SAFETY PROCEDURES.
3. MSDS SHEETS SHOULD BE REVIEWED AND AVAILABLE ON LOCATION PRIOR TO COMMENCING ANY WORK.

Perforating:

SAFETY - FOLLOW NEW MIDLAND DIVISION PERFORATING GUIDELINES.

1. INSURE VENDOR HAS POSTED WARNING SIGNS AT ALL ENTRANCES TO LOCATION.
2. KEEP ALL UNNECESSARY PERSONNEL AWAY FROM PERFORATING GUNS.
3. A PACK-OFF IS REQUIRED FOR ALL LOGGING AND PERFORATING RUNS.
4. BE SURE TO TURN OFF RADIOS AND MOBILE TELEPHONES. GROUND WELLHEAD TO PERFORATING TRUCK.

Recommended Procedure:

1. MRPJ and install BOP.
2. POOH and lay down production equipment.
3. RILH w/ 4-3/4" bit and 5-1/2" casing scraper to 6408' (pkf @ 6408'). POOH.
4. Set bottom plug: RILH w/ 5-1/2" CIBP on 2-7/8" workstring to 6400'.
 - a. Set CIBP @ 6400'.
 - b. Load hole w/ \pm 185 bbls of 10 ppg 'PA' mud consisting of 10 ppg brine w/ 25 pounds of gel per bbl.
 - c. Pump 15 sx cmt (1.32 cu ft/sx) but not less than 50' above CIBP.
 - d. Displace w/ 38 bbls of 10 ppg 'PA' mud.
 - e. Pull up hole and WOC.
 - f. RILH, tag, and record TOC. POOH.

5. Set intermediate casing shoe plug: Perforate casing @ 3005' w/ 4 JSPF.

- a. RILH w/ 2-7/8" WS, openend to 3000'.
- b. Establish circulation between 5-1/2" x 7-5/8" annulus w/ 10 ppg 'PA' mud.

- a. Pump 10 ppg 'PA' mud to TOC.
1. RILH, tag and record TOC. POOH.

6. Set surface plug: Perforate casing @ 180' w/ 4 JSPF.

- a. Establish circulation between 5-1/2" x 7-5/8" and 7-5/8" x 10-3/4" annulus w/ 10 ppg 'PA' mud.
- b. Pump 110 sx cmt (1.32 cu ft/sx) or until good cmt returns through annulus.

7. Prepare surface location:

- a. Cut off all casing strings at base of cellar or 3' below final restored ground level (whichever is deeper).
- b. Fill casing from cement plug to surface w/ suitable material (cement, sand, gravel, etc.).
- c. Cover wellbore w/ a metal plate at least 1/4" thick, welded in place or a cement cap extending at least 12" beyond the 10-3/4" surface casing and at least 4" thick.

8. Erect abandonment marker:

- a. Use at least 4" pipe, 10' long w/ 4' above ground and embedded in cement.
- b. Marker must be capped and inscribed with the following well information:

Hawk B-10 No. 1
Unit H, Sec. 10, T-21S, R-37E
Lea County, NM

Date:

- c. Cut off deadman anchors below ground and remove markers. Fill in cellar and workover pit.
- d. Remove all equipment not in service.
- e. Clean and restore location to its natural state. Reseed according to BLM requirements.
- f. Send a copy of well servicing report to Bill Keathy in Midland so the proper forms can filed.

J. W. Cordio
Engineer

APPROVALS:

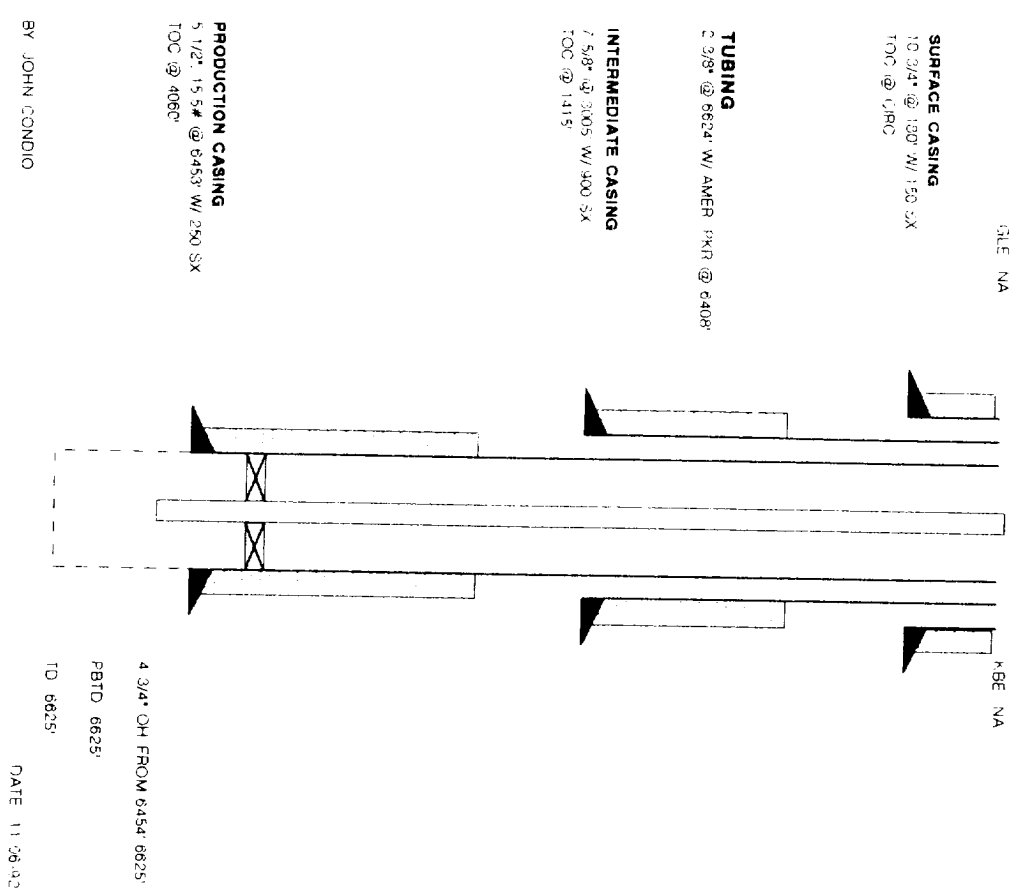
Supervising Production Engineer

Ayesa Production Manager

Date

Date

HAWK B-10 NO. 1
SE/4NE/4 SEC. 10-T21S-R37E



PROPOSED
HAWK B-10 NO. 1
SE/4NE/4 SEC. 10-T21S-R37E

