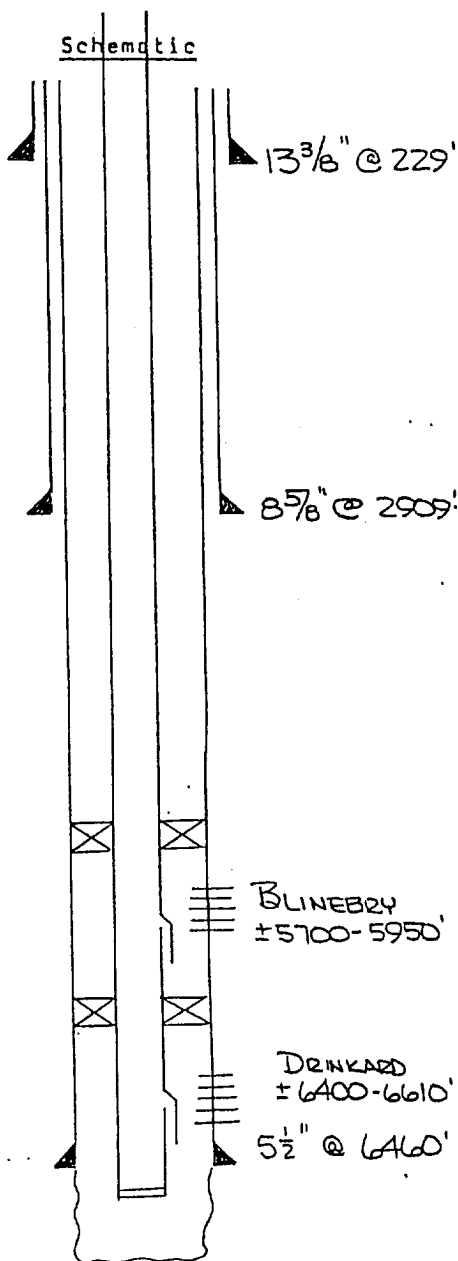


OPERATOR SWEPT LEASE NORTHEAST DRINKARD UNIT (FORMERLY SWEPT'S) SARKEYS #2  
 WELL NO. 913W FOOTAGE LOCATION 1980' FSL & 1980' FWL SECTION 23-21S-37E TOWNSHIP 23-21S-37E RANGE 23-21S-37E

Schematic



TD = 6610'

Tabular Data

## Surface Casing

Size 13 3/8 " Cemented with 1250 sx.  
 TOC SURE feet determined by CIRC.  
 Hole size 17 "

## Intermediate Casing

Size 8 5/8 " Cemented with 1500 sx.  
 TOC SURE feet determined by CIRC.  
 Hole size 11 "

## Long string

Size 5 1/2 " Cemented with 1000 sx.  
 TOC 900 feet determined by FREE PT  
 Hole size 7 7/8 "  
 Total depth 6610' (CSG TO 6460')

## Injection interval

±5700 feet to ±6600 feet (perforated or open-hole, indicate which) PERF'D TO 6460', OPEN HOLE TO 6610'

\* DOWNHOLE FLOW REGULATOR IN SIDEROCKET MANDREL OPPOSITE EACH ZONE.

Tubing size 2 3/8 " lined with FIBERGLASS EPOXY (material) set in a BAKET LOK-SET (OR EQUIVALENT) packer at ±6350 feet,  
 (brand and model) w/ A 5 1/2 " TENSION PLR AT ±5650  
 (or describe any other casing-tubing seal).

## Other Data

- Name of the injection formation BLINERRY / DRINKARD
- Name of Field or Pool (if applicable) N. EUNICE BLIN/TURP/DRINK OIL & GAS POOL
- Is this a new well drilled for injection? ☐ Yes ☒ No  
If no, for what purpose was the well originally drilled? DRINKARD OIL PRODUCER
- Has the well ever been perforated in any other zone(s)? List all such perforated intervals and give plugging detail (sacks of cement or bridge plug(s) used) — NO —
- Give the depth to and name of any overlying and/or underlying oil or gas zones (pools) in this area.

V3/14/18