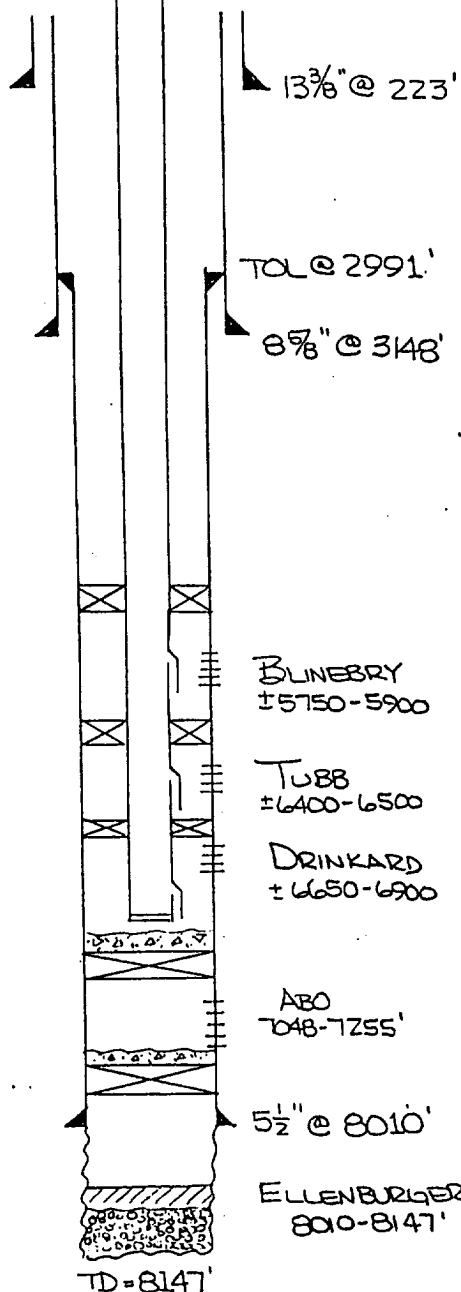


OPERATOR SWEPT LEASE NORTHEAST DRINKARD UNIT (FORMERLY SWEPT's)
 WELL NO. 216W FOOTAGE LOCATION 3546' FNL & 1650' FNL SECTION 2-21S-37E STATE SECTION 2 #15

Schematic



Tabular Data

Surface Casing

Size 13 3/8 " Cemented with 250 sx.
 TOC SURE feet determined by CIRC.
 Hole size 17 1/2 "

Intermediate Casing

Size 8 7/8 " Cemented with 1300 sx.
 TOC SURE feet determined by CIRC.
 Hole size 11 "

Long string

Size 5 1/2 LINER " Cemented with 400 sx.
 TOC TOL @ 2991' feet determined by CIRC.
 Hole size 7 7/8 "
 Total depth 8147' (LINER TO 8010')

Injection interval

±5750 feet to ±6950 feet (PERF'D)
 (perforated or open-hole, indicate which)

* FLOW REGULATOR IN SIDEROCKET
 MANDREL OPPOSITE EACH ZONE.

Tubing size 2 3/8 " lined with FIBERGLASS EPOXY set in a
 (material)
BAKER LOK-SET (OR EQUIVALENT) packer at ±6600 feet
 (brand and model)
 (or describe any other casing-tubing seal). w/ TENSION PKRS AT ±6350 AND ±5700

Other Data

- Name of the injection formation BLINEBRY/TUBB/DRINKARD
- Name of Field or Pool (if applicable) N. EUNICE BLIN/TUBB/DRINK. OIL & GAS POOL
- Is this a new well drilled for injection? ☐ Yes ☒ No
 If no, for what purpose was the well originally drilled?
ELLENBURGER OIL PRODUCER
- Has the well ever been perforated in any other zone(s)? List all such perforated intervals and give plugging detail (sacks of cement or bridge plug(s) used)
ELLENBURGER (8010-8147, OPEN HOLE). ISOLATED w/ CMT CAPPED CIBP @ 7900'.
ABO (7048-7255). ISOLATED w/ CMT CAPPED CIBP @ 6925'.
- Give the depth to and name of any overlying and/or underlying oil or gas zones (pools) in this area.