

NEW MEXICO OIL CONSERVATION COMMISSION
Santa Fe, New Mexico

NOTICE OF INTENTION TO DRILL ~~ON RECOMPLETION~~

Notice must be given to the District Office of the Oil Conservation Commission and approval obtained before drilling or recompletion begins. If changes in the proposed plan are considered advisable, a copy of this notice showing such changes will be returned to the sender. Submit this notice in QUINTUPPLICATE. One copy will be returned following approval. See additional instructions in Rules and Regulations of the Commission.

Hobbs, New Mexico
(Place)

July 11, 1956
(Date)

OIL CONSERVATION COMMISSION
SANTA FE, NEW MEXICO

Gentlemen:

You are hereby notified that it is our intention to commence the (Drilling) (Recompletion) of a well to be known as

Shell Oil Company
(Company or Operator)

State
(Lease)

Well No. 21, in T (Unit) The well is

located 2205 feet from the south line and 980 feet from the west line of Section 2, T. 21-S, R. 37-E, NMPM.

(GIVE LOCATION FROM SECTION LINE)

Terry Minebry Pool, Lea County

If State Land the Oil and Gas Lease is No. A-9745

If patented land the owner is

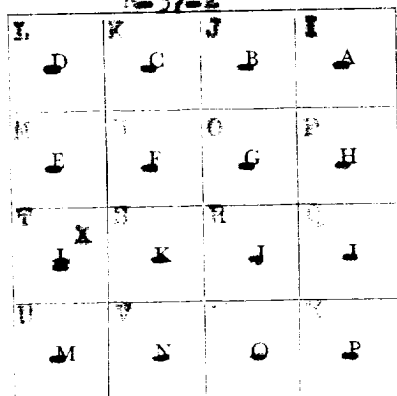
Address

We propose to drill well with drilling equipment as follows: Rotary tools

The status of plugging bond is Market Bond

Drilling Contractor Unknown

We intend to complete this well in the Minebry formation at an approximate depth of 5935 feet.



Section 2

CASING PROGRAM

We propose to use the following strings of Casing and to cement them as indicated:

Size of Hole	Size of Casing	Weight per Foot	New or Second Hand	Depth	Sacks Cement
17"	13 3/8"	104	New	300'	300
11"	8 5/8"	72	New	3150'	1500
7 7/8"	5 1/2"	15.5	New	5935'	100

If changes in the above plans become advisable we will notify you immediately.

ADDITIONAL INFORMATION (If recompletion give full details of proposed plan of work.)

Approved: JUL 18 1956, 19.....
Except as follows:

OIL CONSERVATION COMMISSION

By: C. M. Ludy

Title

Sincerely yours,

Shell Oil Company

(Original signed by

By: E. Nevill B. Nevill

Position: Division Exploitation Engineer

Send Communications regarding well to

Name: Shell Oil Company

Address: Box 1957

Hobbs, New Mexico

NEW MEXICO
OIL CONSERVATION COMMISSION

Form C-128

Well Location and/or Gas Proration Plat

Date July 11, 1956

Operator Shell Oil Company Lease State

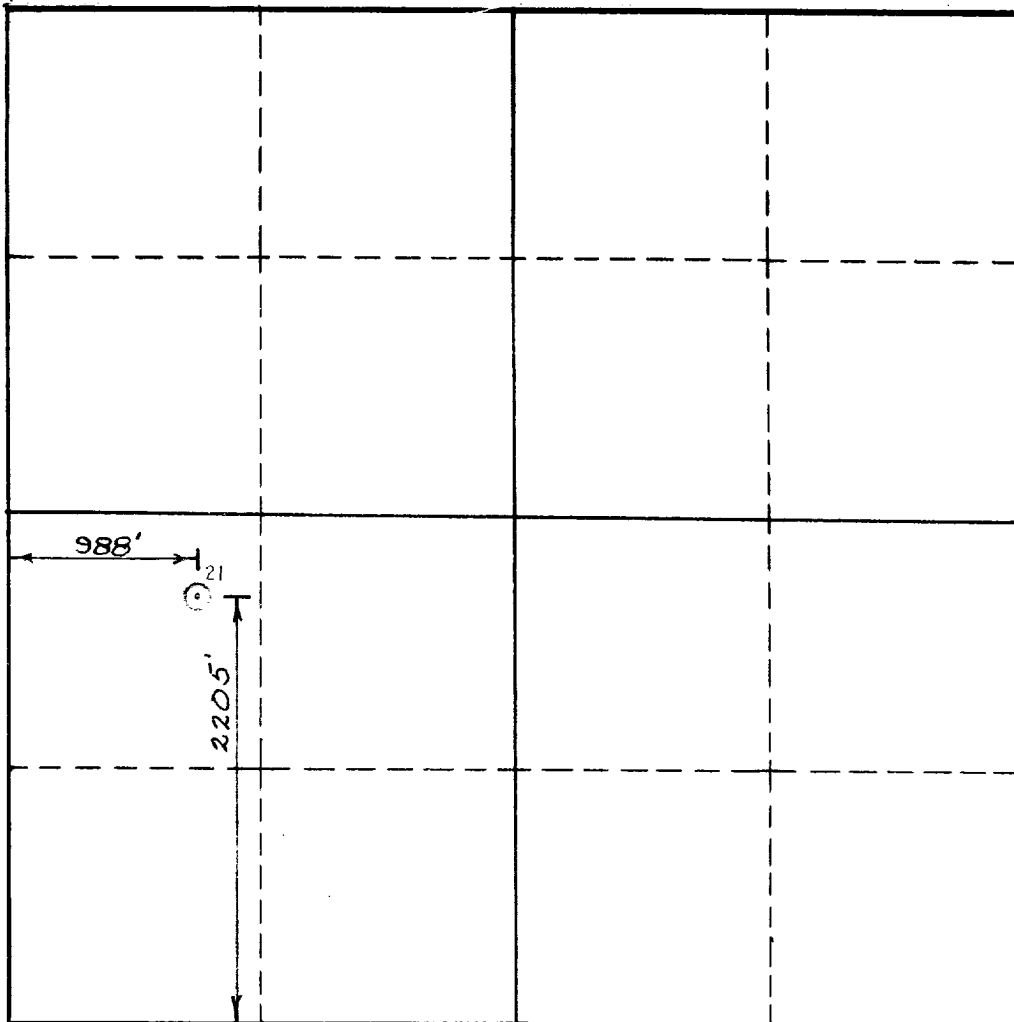
Well No. 21 Section 2 Township 21-S Range 37-E NMPM

Located 2205 Feet From South Line, 988 Feet From West Line,

Lea County, New Mexico. G. L. Elevation Not available.

Name of Producing Formation Minobry Pool Terry-Minobry Dedicated Acreage 40

(Note: All distances must be from outer boundaries of Section)



SCALE: 1"=1000'

1. Is this Well a Dual Comp. ? Yes No X.
2. If the answer to Question 1 is yes, are there any other dually completed wells within the dedicated acreage ? Yes No .

This is to certify that the above plat was prepared from field notes of actual surveys made by me or under my supervision and that the same are true and correct to the best of my knowledge and belief.

Name D. E. Nevill
Position Division Exploitation Engineer
Representing Shell Oil Company
Address Box 1957, Hobbs, New Mexico

Date Surveyed 7-6-56
Neal A. Shepard Cert. No. 1467
Registered Professional Engineer and/or
Land Surveyor