

UNITED STATES
DEPARTMENT OF THE INTERIOR
BUREAU OF LAND MANAGEMENT
WELL COMPLETION OR RECOMPLETION REPORT AND LOG

N.M. C Cons. Division
1625 N. French Dr.
Hobbs, NM 88240

FORM APPROVED
OMB NO. 1004-1037
Expires: November 30, 2000

1a. Type of Well: <input type="checkbox"/> Oil Well <input type="checkbox"/> Gas Well <input type="checkbox"/> Dry <input checked="" type="checkbox"/> Other Injection (WFX-774)						6. If Indian, Allottee or Tribe Name			
b. Type of Completion: <input type="checkbox"/> New Well <input type="checkbox"/> Workover <input type="checkbox"/> Deepen <input type="checkbox"/> Plug Back <input type="checkbox"/> Diff. Resvr. <input checked="" type="checkbox"/> Other <u>Convert to Injection</u>						7. Unit or CA Agreement Name and No.			
2. Name of Operator Apache Corporation						8. Lease Name and Well No. Northeast Drinkard Unit # 305			
3. Address 2000 Post Oak Blvd, Ste. 100, Houston, Texas 77056-4400				3a. Phone No. (include area code) 713-296-6000		9. API Well No. 30-025-06493			
4. Location of Well (Report location clearly and in accordance with Federal requirements)* At surface 1980' FSL & 1980' FEL, Unit R At top prod. interval reported below At total depth						10. Field and Pool, or Exploratory Eunice N., Blinebry-Tubb-Drinkard			
						11. Sec., T., R., M., or Block and Survey or Area Sec. 3, T-21S, R-37E			
						12. County or Parish Lea			
						13. State NM			
14. Date Spudded		15. Date T.D. Reached		16. Date Completed <input type="checkbox"/> D & A <input checked="" type="checkbox"/> Ready to Produce 01/23/02		17. Elevations (DF, RKB, RT, GL) * 3459' GL			
18. Total Depth: MD 6747 TVD		19. Plug Back T.D.: MD 6747 TVD		20. Depth Bridge Plug Set: MD TVD					
21. Type Electric & Other Mechanical Logs Run (Submit copy of each)						22. Was well cored? <input type="checkbox"/> No <input type="checkbox"/> Yes (Submit analysis) Was DST run? <input type="checkbox"/> No <input type="checkbox"/> Yes (Submit report) Directional Survey? <input type="checkbox"/> No <input type="checkbox"/> Yes (Submit copy)			
23. Casing and Liner Record (Report all strings set in well)									
Hole Size	Size/Grade	Wt. (#/ft.)	Top (MD)	Bottom (MD)	Stage Cementer Depth	No. of Sks. & Type of Cement	Slurry Vol. (BBL)	Cement Top*	Amount Pulled
17-1/2	13-3/8	36#	0	199		250	-	Surface	
12-1/4	9-5/8	36/40#	0	2969		1525		725' (TS)	
8-3/4	7	23#	0	6746		875		3000' (TS)	
24. Tubing Record									
Size	Depth Set (MD)	Packer Depth (MD)	Size	Depth Set (MD)	Packer Depth (MD)	Size	Depth Set (MD)	Packer Depth (MD)	
2-3/8		5613							
25. Producing Intervals					26. Perforation Record				
Formation	Top	Bottom	Perforated Interval	Size	No. Holes	Perf Status			
Drinkard			6535 - 6689	-	222	Injecting			
27. Acid, Fracture, Treatment, Cement Squeeze, Etc									
Depth Interval		Amount and Type of Material							
6180 - 6501		Polymer squeeze w/ 20 bbls Maraseal							
28. Production - Interval A									
Date First Produced	Test Date	Hours Tested	Test Production	Oil BBL	Gas MCF	Water BBL	Oil Gravity Corr. API	Gas Gravity	Production Method
1/23/02			→						
Choke Size	Tubing Pressure Flwg. SI	Casing Pressure	24 Hour Rate	Oil BBL	Gas MCF	Water BBL	Oil Gravity Corr. API	Gas Gravity	Well Status
			→						Injecting
28a. Production - Interval B									
Date First Produced	Test Date	Hours Tested	Test Production	Oil BBL	Gas MCF	Water BBL	Oil Gravity Corr. API	Gas Gravity	Production Method
			→						
Choke Size	Tubing Pressure Flwg. SI	Casing Pressure	24 Hour Rate	Oil BBL	Gas MCF	Water BBL	Oil Gravity Corr. API	Gas Gravity	Well Status
			→						

(See instructions and spaces for additional data on reverse side)

ACCEPTED FOR RECORD
(ORIG. SGD.) DAVID R. GLASS
MAR 6 2002
DAVID R. GLASS
REGISTERED PROFESSIONAL ENGINEER

28b. Production - Interval C

Date First Produced	Test Date	Hours Tested	Test Production	Oil BBL	Gas MCF	Water BBL	Oil Gravity Corr. API	Gas Gravity	Production Method
			→						
Choke Size	Tubing Pressure Flwg. SI	Casing Pressure	24 Hour Rate	Oil BBL	Gas MCF	Water BBL	Gas : Oil Ratio	Well Status	
			→						

28c. Production - Interval D

Date First Produced	Test Date	Hours Tested	Test Production	Oil BBL	Gas MCF	Water BBL	Oil Gravity Corr. API	Gas Gravity	Production Method
			→						
Choke Size	Tubing Pressure Flwg. SI	Casing Pressure	24 Hour Rate	Oil BBL	Gas MCF	Water BBL	Gas : Oil Ratio	Well Status	
			→						

29. Disposition of Gas (*Sold, used for fuel, vented, etc.*)

30. Summary of Porous Zones (Include Aquifers):

Show all important zones of porosity and contents thereof. Cored intervals and all drill-stem tests, including depth interval tested, cushion used, time tool open, flowing and shut-in pressures and recoveries.

31. Formation (Log) Markers

Formation	Top	Bottom	Descriptions, Contents, Etc.	Name	Top Measured Depth

32. Additional remarks (include plugging procedure):

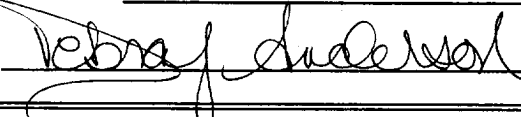
33. Mark enclosed attachments:

- ☐ Electrical/Mechanical Logs (1 full set req'd.)
 ☐ Geologic Report
 ☐ DST Report
 ☐ Directional Survey
- ☒ Sundry Notice / Plugging / Cement Verification
 ☐ Core Analysis
 ☒ Other Copy of CIT Chart

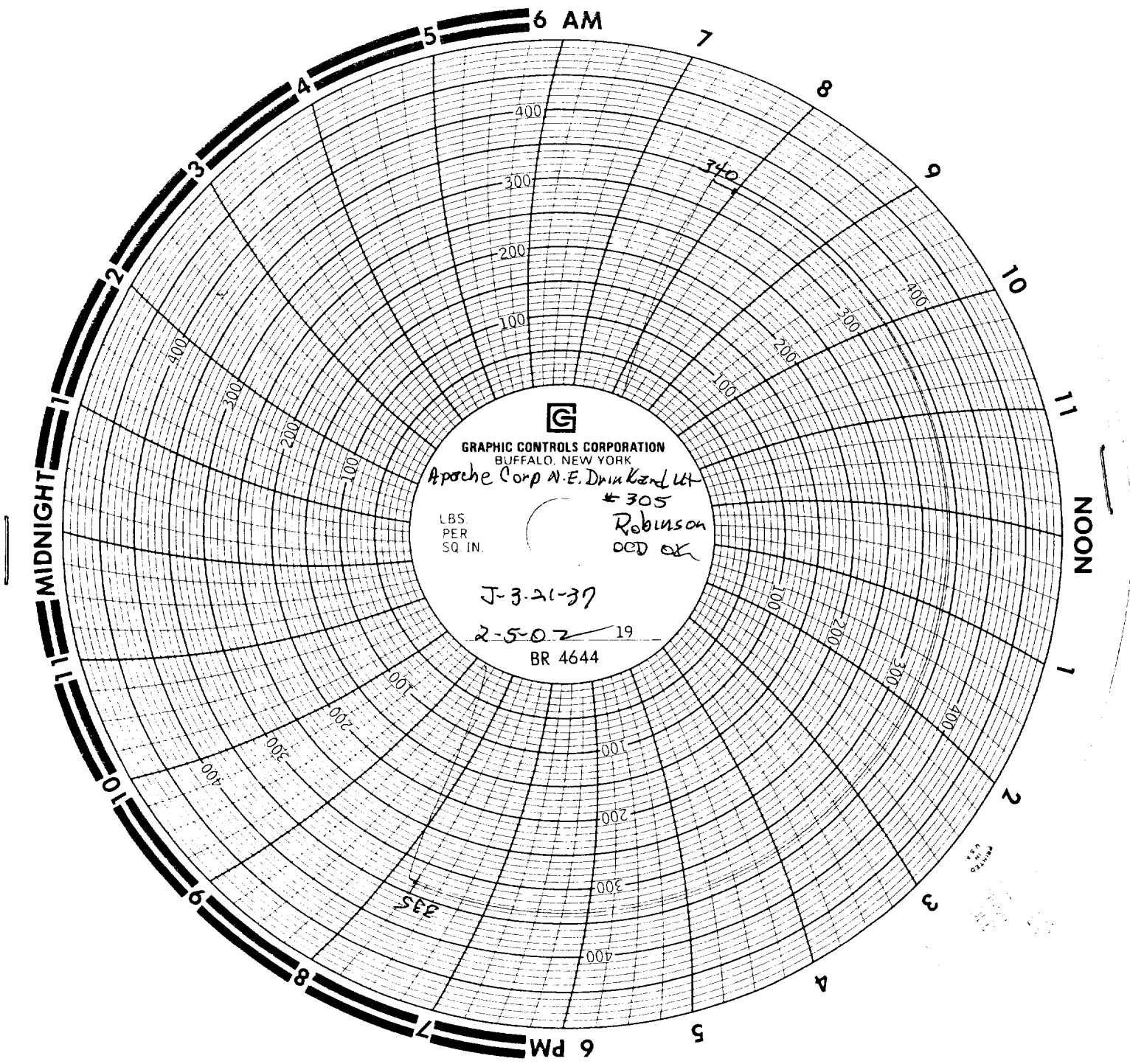
34. I hereby certify that the foregoing and attached information is complete and correct as determined from all available records (see attached instructions)*

Name (*please print*) Debra J. AndersonTitle Sr. Engineering Technician

Signature


Date 2/28/2002

Title 18 U.S.C. Section 1001 and title 43 U.S.C. Section 1212, make it a crime for any person knowingly and willfully to make to any department or agency of the United States any false, fictitious fraudulent statements or representations as to any matter within its jurisdiction.



GRAPHIC CONTROLS CORPORATION
BUFFALO, NEW YORK

Apache Corp N.E. Drunkard Lt

305

Robinson
OCD OK

LBS.
PER
SQ. IN.

J-3-21-37

2-5-02 19

BR 4644

MADE
IN
U.S.A.