

District I
1625 N. French Drive, Hobbs, NM 88240

State of New Mexico
Energy, Minerals and Natural Resources Department

Form C-102
Revised October 18, 1994

District II
P O Drawer DD, Artesia, NM 88210

OIL CONSERVATION DIVISION

2040 S. Pacheco
Santa Fe, New Mexico 87505

Instruction on Back
Submit to Appropriate District Office
State Lease - 4 Copies
Free Lease - 3 Copies

District III
1000 Rio Brazos Rd., Aztec, NM 87410

☐ AMENDED REPORT

District IV
1220 South St. Francis, Santa Fe, NM 87505

WELL LOCATION AND ACREAGE DEDICATION PLAT

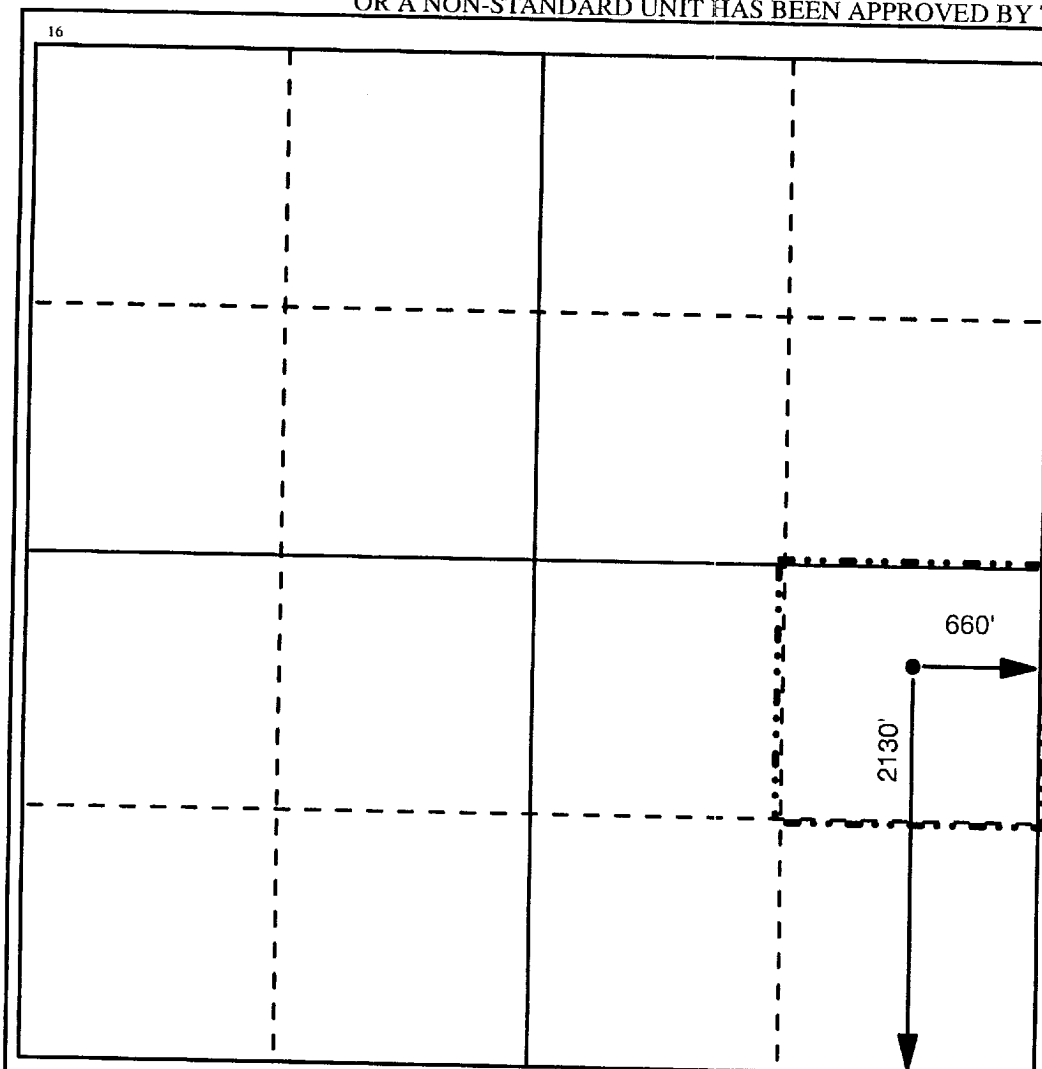
¹ API Number 30-025-06504	² Pool Code 50350	³ Pool Name Penrose Skelly; Grayburg
⁴ Property Code 24433	⁵ Property Name Hawk B-3	⁶ Well Number 4
⁷ OGRID No. 000873	⁸ Operator Name Apache Corporation	⁹ Elevation 3463

¹⁰ Surface Location									
UL or Lot No. Q 1	Section 3	Township 21S	Range 37E	Lot Idn	Feet from the 2130	North/South line South	Feet from the 660	East/West line East	County Lea

¹¹ Bottom Hole Location If Different From Surface									
UL or Lot No.	Section	Township	Range	Lot Idn	Feet from the	North/South line	Feet from the	East/West line	County

¹² Dedicated Acres 40	¹³ Joint or Infill	¹⁴ Consolidation Code	¹⁴ Order No.
-------------------------------------	-------------------------------	----------------------------------	-------------------------

NO ALLOWABLE WILL BE ASSIGNED TO THIS COMPLETION UNTIL ALL INTERESTS HAVE BEEN CONSOLIDATED
OR A NON-STANDARD UNIT HAS BEEN APPROVED BY THE DIVISION



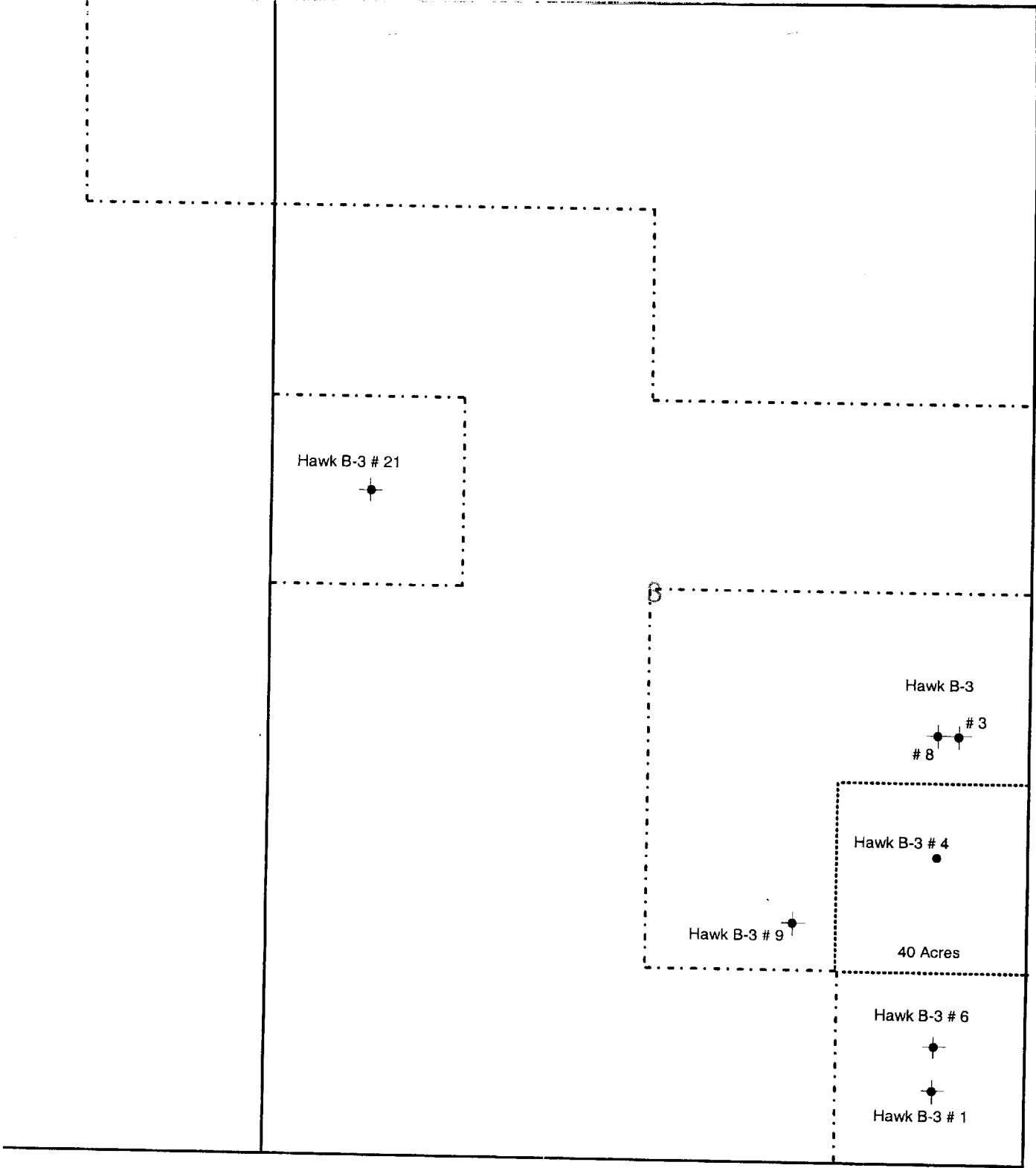
¹⁷ OPERATOR CERTIFICATION <i>I hereby certify that the information contained herein is true and complete to the best of my knowledge and belief.</i>
Signature <i>Debra J. Anderson</i>
Printed Name Debra J. Anderson
Title Sr. Engineering Technician
Date 02/06/01

¹⁸ SURVEYOR CERTIFICATION <i>I hereby certify that the well location shown on this plat was plotted from field notes of actual surveys made by me or under my supervision, and that the same is true and correct to the best of my belief.</i>
Date Surveyed
Signature and Seal of Professional Surveyor
Certificate Number

RECEIVED

FEB 08 '01

**BLM
ROSWELL, NM**

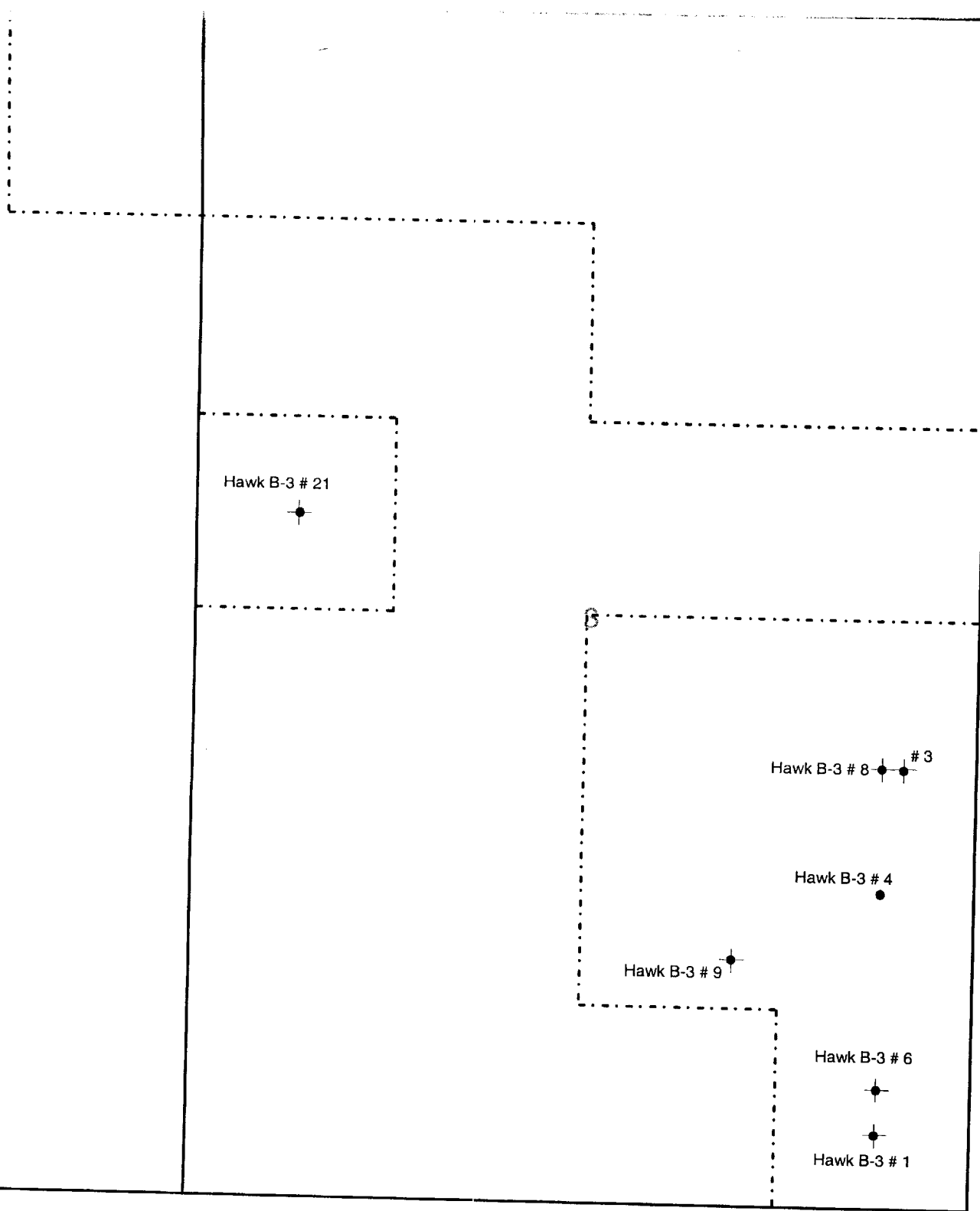


APACHE CORPORATION
HAWK B-3 NO. 4
SEC 3 / T-21S / R-37E
LEA COUNTY, NEW MEXICO

RECEIVED

FEB 08 '01

BLM
ROSWELL, NM



APACHE CORPORATION
HAWK B-3 LEASE
520 ACRES
SEC 3 / T-21S / R-37E
LEA COUNTY, NEW MEXICO

RESERVED

FEB 08 '01

RESERVED