

DISTRICT I

1625 N. French Dr., Hobbs, NM 88240

DISTRICT II

811 South First, Artesia, NM 88210

DISTRICT III

1000 Rio Brazos Rd., Aztec, NM 87410

DISTRICT IV

1220 South St. Francis Dr., Santa Fe, NM 87505

State of New Mexico
Energy, Minerals and Natural ResourcesForm C-105
Revised March 25, 1999OIL CONSERVATION DIVISION
1220 South St. Francis Drive
Santa Fe, NM 87505

WELL API NO.

30-025-06520

5. Indicate Type of Lease

☐ STATE☒ FEE

6. State Oil & Gas Lease No.

WELL COMPLETION OR RECOMPLETION REPORT AND LOG

1a. Type of Well:

☐ OIL WELL☐ GAS WELL☐ DRY☒ OTHER

Injection

b. Type of Completion:

☐ New Well☐ Workover☐ Deepen☐ Plug Back☐ Diff. Resvr.☒ Other

2. Name of Operator

Apache Corporation

8. Well No.

304

3. Address of Operator

2000 Post Oak Blvd., Ste. 100, Houston, Texas 77056-4400 / 713-296-6000 WFX-774

9. Pool name or Wildcat

Eunice N., Blinebry-Tubb-Drinkard

4. Well Location

Unit Letter V : 915 Feet From The South Line and 2208 Feet From The West Line
Section 3 Township 21S Range 37E NMPM Lea County

10. Date Spudded

11. Date T.D. Reached

12. Date Compl. (Ready to Prod.)

12/10/01

13. Elevations (DF& RKB, RT, GR, etc.)

3428'

14. Elev. Casinghead

GR

15. Total Depth

6659

16. Plug Back T.D.

6625

17. If Multiple Compl. How

Many Zones?

18. Intervals

Drilled By

Rotary Tools

Cable Tools

19. Producing Interval(s), of this completion - Top, Bottom, Name

Blinebry 5558 - 6134

Tubb 6381 - 6413

Drinkard 6520 - 6625

20. Was Directional Survey Made

21. Type Electric and Other Logs Run

22. Was Well Cored

CASING RECORD (Report all strings set in well)

CASING SIZE	WEIGHT LB./FT.	DEPTH SET	HOLE SIZE	CEMENTING RECORD	AMOUNT PULLED
13-3/8	48#	237	17	250 sx / Circulated to Surface	
8-5/8	32#	3151	11	2000 sx / Circulated to surface	

24. LINER RECORD

SIZE	TOP	BOTTOM	SACKS CEMENT	SCREEN
5-1/2	2950	6584	700	

25. TUBING RECORD

SIZE	DEPTH SET	PACKER SET
2-3/8		5476

26. Perforation record (interval, size, and number)

Blinebry 5558 - 6134 - 576 Holes

Tubb 6381 - 6413 - 10 Holes

Drinkard 6520 - 6525 - 6 Holes

Open Hole 6584 - 6625

27. ACID, SHOT, FRACTURE, CEMENT, SQUEEZE, ETC.

DEPTH INTERVAL

AMOUNT AND KIND MATERIAL USED

28.

PRODUCTION

Date First Production 12/10/01		Production Method (Flowing, gas lift, pumping - Size and type pump)				Well Status (Prod. or Shut-in) Injecting	
Date of Test	Hours Tested	Choke Size	Prod'n For Test Period	Oil - Bbl.	Gas - MCF	Water - Bbl.	Gas - Oil Ratio
Flow Tubing Press	Casing Pressure	Calculated 24- Hour Rate	Oil - Bbl.	Gas - MCF	Water - Bbl.	Oil Gravity - API - (Corr.)	

29. Disposition of Gas (Sold, used for fuel, vented, etc.)

Test Witnessed By

30. List Attachments

C-103 Sundry Notice w/ Chart

31. I hereby certify that the information shown on both sides of this form is true and complete to the best of my knowledge and belief

Signature

Printed
Name

Debra J. Anderson

Title

Sr. Engineering Technician

Date 02/28/02

INSTRUCTIONS

This form is to be filed with the appropriate District Office of the Division Office not later than 20 days after the completion of any newly-drilled or deepened well. It shall be accompanied by one copy of all electrical and radio-activity logs run on the well and a summary of all special tests conducted, including drill stem tests. All depths reported shall be measured depths. In the case of directionally drilled wells, true vertical depths shall also be reported. For multiple completions, items 25 through 29 shall be reported for each zone. The form is to be filed in quintuplicate except on state land, where six copies are required. See Rule 1105.

INDICATE FORMATION TOPS IN CONFORMANCE WITH GEOGRAPHICAL SECTION OF STATE

Southeastern New Mexico

Northwestern New Mexico

T. Anhy	T. Canyon	T. Ojo Alamo	T. Penn. "B"
T. Salt	T. Strawn	T. Kirtland-Fruitland	T. Penn. "C"
B. Salt	T. Atoka	T. Pictured Cliffs	T. Penn. "D"
T. Yates	T. Miss	T. Cliff House	T. Leadville
T. 7 Rivers	T. Devonian	T. Menefee	T. Madison
T. Queen	T. Silurian	T. Point Lookout	T. Elbert
T. Grayburg	T. Montoya	T. Mancos	T. McCracken
T. San Andres	T. Simpson	T. Gallup	T. Ignacio Otzte
T. Glorieta	T. McKee	Base Greenhorn	T. Granite
T. Paddock	T. Ellenburger	T. Dakota	T.
T. Blinbry	T. Gr. Wash	T. Morrison	T.
T. Tubb	T. Delaware Sand	T. Todilto	T.
T. Drinkard	T. Bone Springs	T. Entrada	T.
T. Abo	T. Rustler	T. Wingate	T.
T. Wolfcamp	T.	T. Chinle	T.
T. Penn	T.	T. Permian	T.
T. Cisco (Bough C)	T.	T. Penn "A"	T.

OIL OR GAS SANDS OR ZONES

No. 1, from to No. 3, from to
No. 2, from to No. 4, from to

IMPORTANT WATER SANDS

Include data on rate of water inflow and elevation to which water rose in hole.

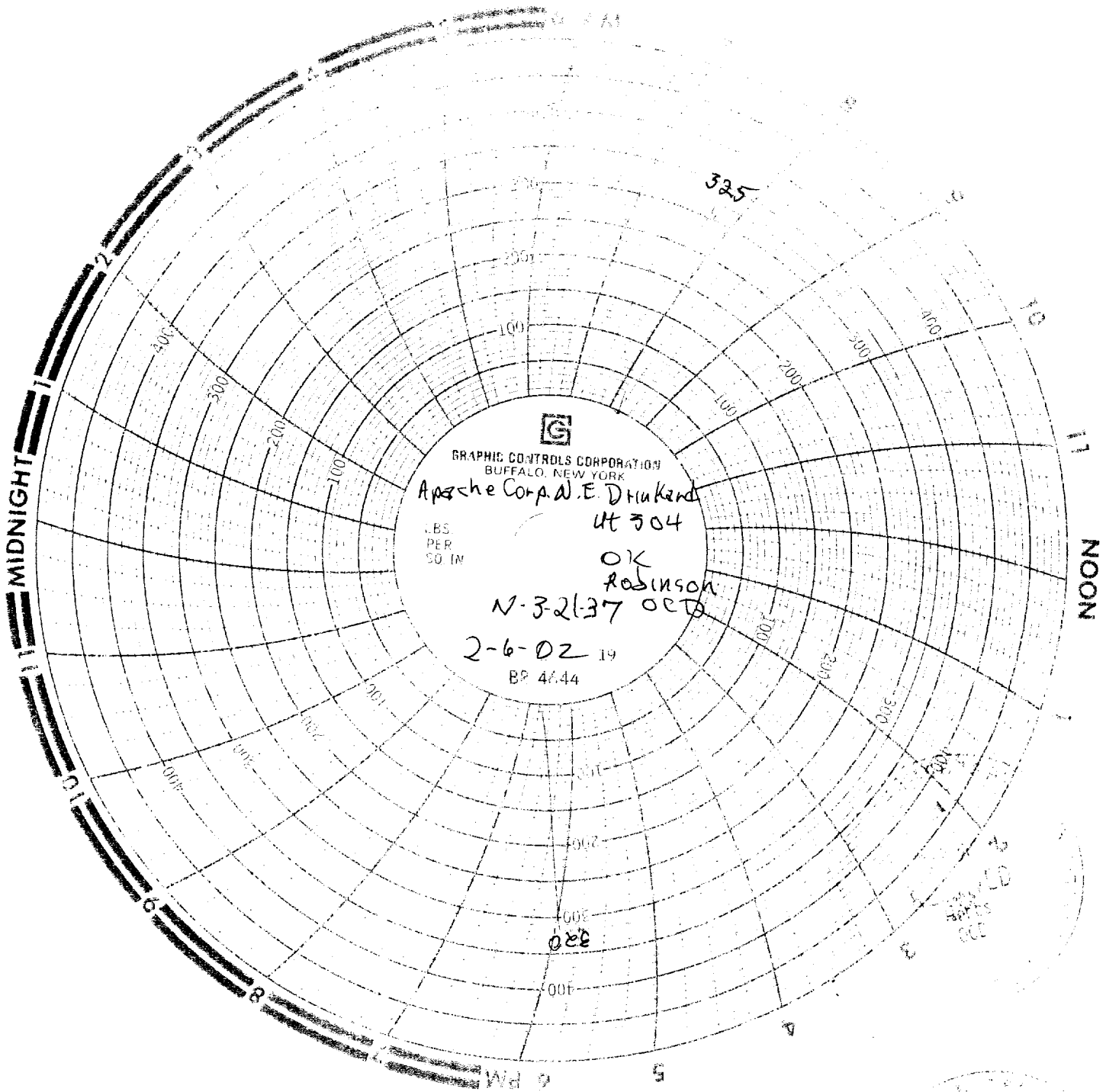
No. 1, from _____ to _____ feet _____

No. 2, from _____ to _____ feet _____

No. 3, from _____ to _____ feet _____

LITHOLOGY RECORD (Attach additional sheet if necessary)

From	To	Thickness in Feet	Lithology



GRAPHIC CONTROLS CORPORATION
BUFFALO, NEW YORK

Apache Corp. A.E. D. H. K. and

UT 304

100
PER
SQ IN

OK
ROBINSON

N-3-21-37 OCT

2-6-02 19

BP 44.44

320
322
325
328
330
332
335
338
340
342
345
348
350
352
355
358
360
362
365
368
370
372
375
378
380
382
385
388
390
392
395
398
400

000

