

UNITED STATES  
DEPARTMENT OF THE INTERIOR  
BUREAU OF LAND MANAGEMENT

N.M. Oil Crops Division  
1625 N. French Dr.  
Hobbs, NM 88240

FORM APPROVED

Budget Bureau No. 1004-0135

Expires: March 31, 1993

SUNDRY NOTICES AND REPORTS ON WELLS

Do not use this form for proposals to drill or to deepen or reentry to a different reservoir.  
Use "APPLICATION FOR PERMIT-" for such proposals

SUBMIT IN TRIPLICATE

1. Type of Well

☒ Oil Well ☐ Gas Well ☐ Other

2. Name of Operator

Apache Corporation

3. Address and Telephone No.

2000 Post Oak Blvd., Suite 100, Houston, Texas 77056-4400 / 713-296-6000

4. Location of Well (Footage, Sec., T., R., M., or Survey Description)

1980' FNL & 330' FWL, Sec 11, T-21S, R-37E, Unit E

5. Lease Designation and Serial No.

LC-032096(b)

6. If Indian, Allottee or Tribe Name

7. If Unit or CA, Agreement Designation

8. Well Name and No.

Lockhart B-11 # 3

9. API Well No.

30-025-06525

10. Field and Pool, or Exploratory Area

Penrose Skelly; Grayburg

11. County or Parish, State

Lea County, New Mexico

12 CHECK APPROPRIATE BOX(s) TO INDICATE NATURE OF NOTICE, REPORT, OR OTHER DATA

TYPE OF SUBMISSION

TYPE OF ACTION

- ☒ Notice of Intent  
☐ Subsequent Report  
☐ Final Abandonment Notice

- ☐ Abandonment  
☒ Recompletion  
☐ Plugging Back  
☐ Casing Repair  
☐ Altering Casing  
☒ Other Plugback to Grayburg

- ☐ Change of Plans  
☐ New Construction  
☐ Non-Routine Fracturing  
☐ Water Shut-Off  
☐ Conversion to Injection  
☐ Dispose Water

(Note: Report results of multiple completion on Well Completion or Recompletion Report and Log form)

13 Describe Proposed or Completed Operations (Clearly state all pertinent details, and give pertinent dates, including estimated date of starting any proposed work. If well is directionally drilled, give subsurface locations and measured and true vertical depths for all markers and zones pertinent to this work.) \*

Apache Corporation's Lockhart B-11 No. 3 well is currently a marginal producer downhole commingled in the Wantz Abo pool with perforations @ 6727' - 7370' and the Blinebry O&G pool with perforations @ 5700' - 5970'. Apache proposes to plugback the well to the Penrose Skelly; Grayburg pool under the following procedure:

- 1.) MIRU & pull production equipment.
- 2.) Run in hole with Cast Iron Bridge Plug and set @ +/- 6700'. Cap CIBP w/ 35' cement.
- 3.) Run in hole with Cast Iron Bridge Plug and set @ +/- 5550' (above cement squeezed Blinebry perforations @ 5595' - 5668'). Cap CIBP w/ 35' cement.
- 4.) Perforate the Grayburg at 3874' - 3976' (Estimated - actual perforations will be determined by GR/CNL log to be run following plugback.)
- 4.) Stimulate Grayburg perforations.
- 5.) Return well to production as a Penrose Skelly; Grayburg producer.

14. I hereby certify that the foregoing is true and correct

Signed

Debra J. Anderson

Title Sr. Engineering Technician

Date 2/6/01

(This space for Federal or State office use)

Approved by

(ORIG. SGD.) DAVID R. GLASS

Title

PETROLEUM ENGINEER

Date

FEB 13 2001

Conditions of approval, if any:

Title 18 U.S.C. Section 1001, makes it a crime for any person knowingly and willfully to make to any department or agency of the United States any false, fictitious or fraudulent statements or representations as to any matter within its jurisdiction.

\*See Instruction on Reverse Side

GWW

RECEIVED  
FEB 08 '01  
BLM  
ROSWELL, NM

District I  
1625 N. French Drive, Hobbs, NM 88240

District II  
P O Drawer DD, Artesia, NM 88210

District III  
1000 Rio Brazos Rd., Aztec, NM 87410

District IV  
1220 South St. Francis, Santa Fe, NM 87505

State of New Mexico  
Energy, Minerals and Natural Resources Department

**OIL CONSERVATION DIVISION**

2040 S. Pacheco  
Santa Fe, New Mexico 87505

Form C-102

Revised October 18, 1994

Instruction on Back

Submit to Appropriate District Office

State Lease - 4 Copies

Fee Lease - 3 Copies

☐ AMENDED REPORT

**WELL LOCATION AND ACREAGE DEDICATION PLAT**

<sup>1</sup> API Number 30-025-06525		<sup>2</sup> Pool Code 50350		<sup>3</sup> Pool Name Penrose Skelly; Grayburg	
<sup>4</sup> Property Code 23511		<sup>5</sup> Property Name Lockhart B-11			<sup>6</sup> Well Number 3
<sup>7</sup> OGRID No. 000873		<sup>8</sup> Operator Name Apache Corporation			<sup>9</sup> Elevation 3416

<sup>10</sup> Surface Location

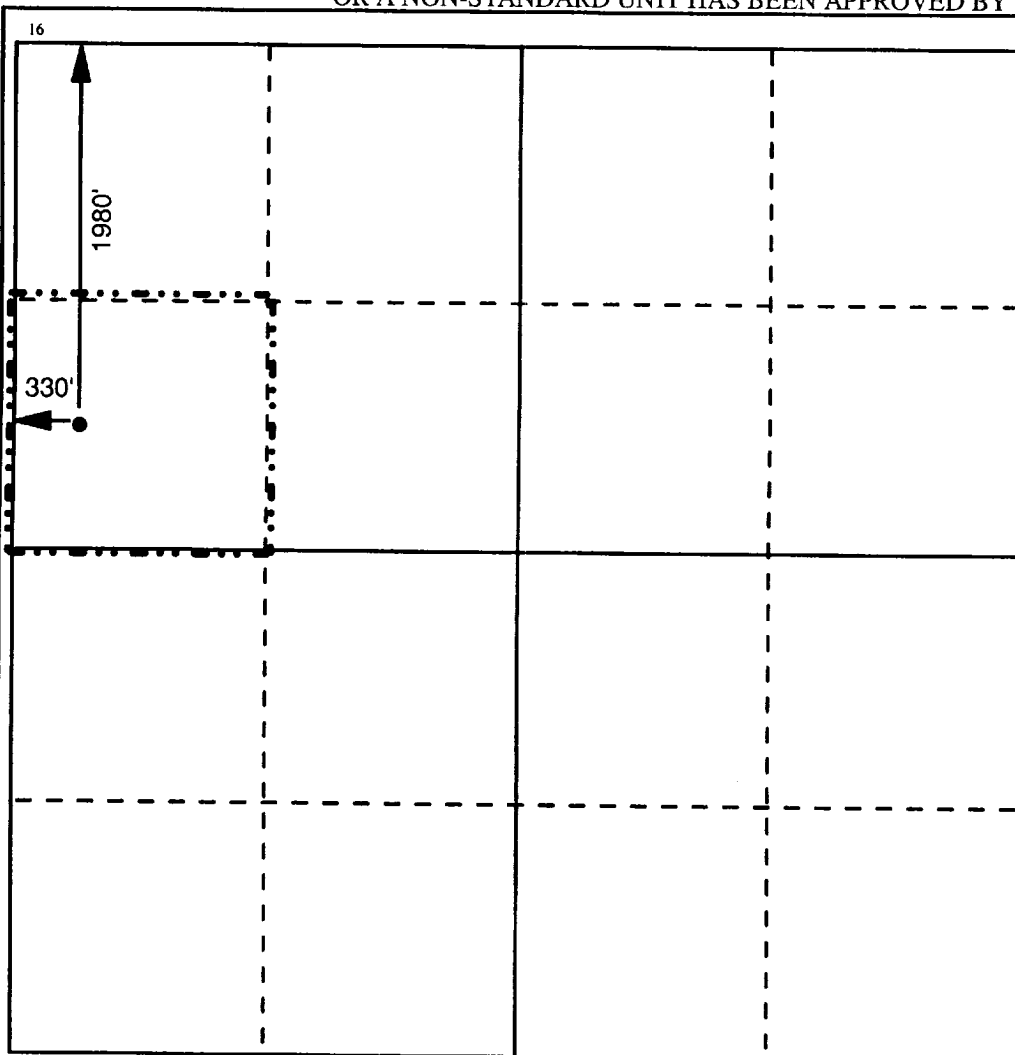
UL or Lot No. E	Section 11	Township 21S	Range 37E	Lot Idn	Feet from the 1980	North/South line North	Fee: from the 330	East/West line West	County Lea
--------------------	---------------	-----------------	--------------	---------	-----------------------	---------------------------	----------------------	------------------------	---------------

<sup>11</sup> Bottom Hole Location If Different From Surface

UL or Lot No.	Section	Township	Range	Lot Idn	Feet from the	North/South line	Fee: from the	East/West line	County
---------------	---------	----------	-------	---------	---------------	------------------	---------------	----------------	--------

<sup>12</sup> Dedicated Acres 40	<sup>13</sup> Joint or Infill	<sup>14</sup> Consolidation Code	<sup>14</sup> Order No.
-------------------------------------	-------------------------------	----------------------------------	-------------------------

NO ALLOWABLE WILL BE ASSIGNED TO THIS COMPLETION UNTIL ALL INTERESTS HAVE BEEN CONSOLIDATED  
OR A NON-STANDARD UNIT HAS BEEN APPROVED BY THE DIVISION



<sup>17</sup> OPERATOR CERTIFICATION

*I hereby certify that the information contained herein is true and complete to the best of my knowledge and belief.*

Signature  
*Debra J. Anderson*  
Printed Name  
Debra J. Anderson  
Title  
Sr. Engineering Technician  
Date  
02/06/01

<sup>18</sup> SURVEYOR CERTIFICATION

*I hereby certify that the well location shown on this plat was plotted from field notes of actual surveys made by me or under my supervision, and that the same is true and correct to the best of my belief.*

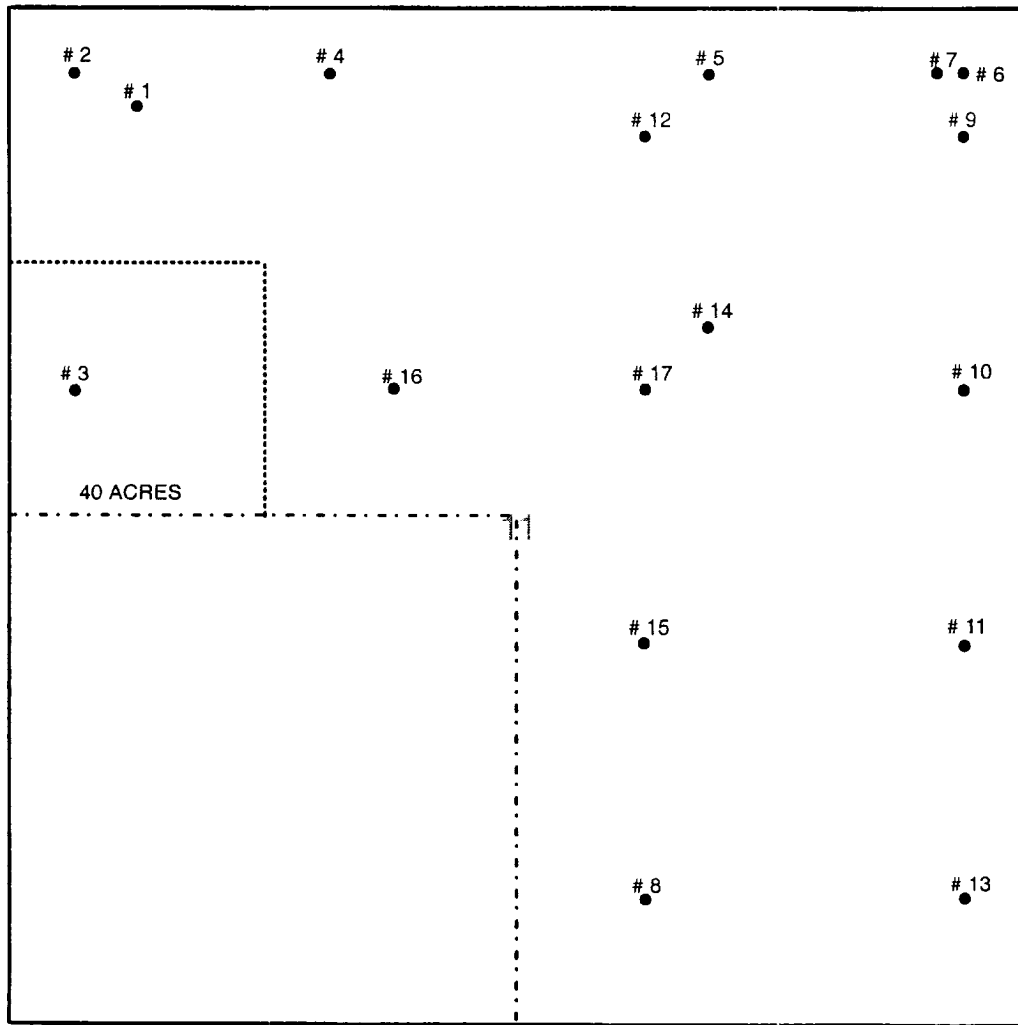
Date Surveyed  
Signature and Seal of Professional Surveyor

Certificate Number

RECEIVED

FEB 08 01

BLM  
ROSWELL, NM

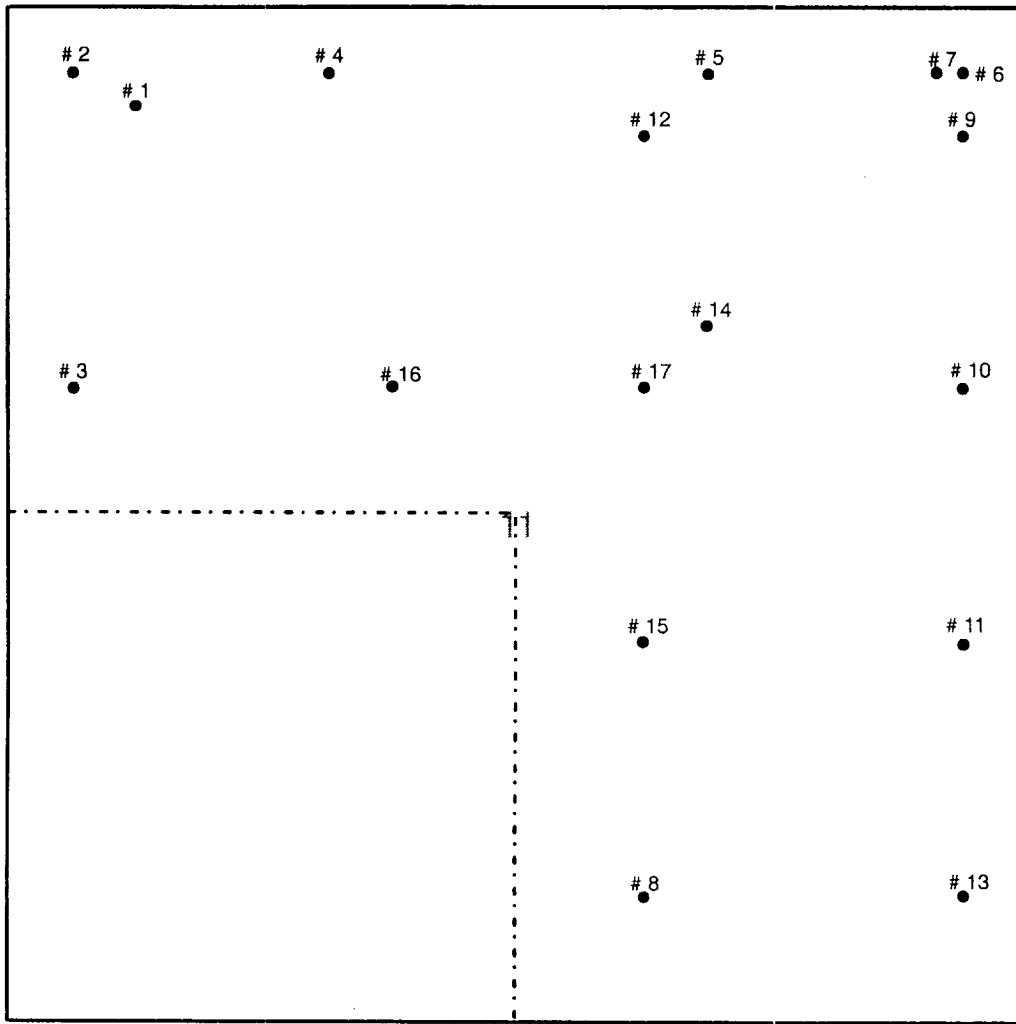


APACHE CORPORATION  
LOCKHART B-11 NO. 3  
SEC 11 / T-21S / R-37E  
LEA COUNTY, NEW MEXICO

RECEIVED

FEB 08 01

BLM  
ROSWELL, NM



APACHE CORPORATION  
LOCKHART B-11 LEASE  
480 ACRES  
SEC 11 / T-21S / R-37E  
LEA COUNTY, NEW MEXICO

**RECEIVED**

**FEB 08 '01**

**BLM  
ROSWELL, NM**