

PRINTED IN U.S.A.

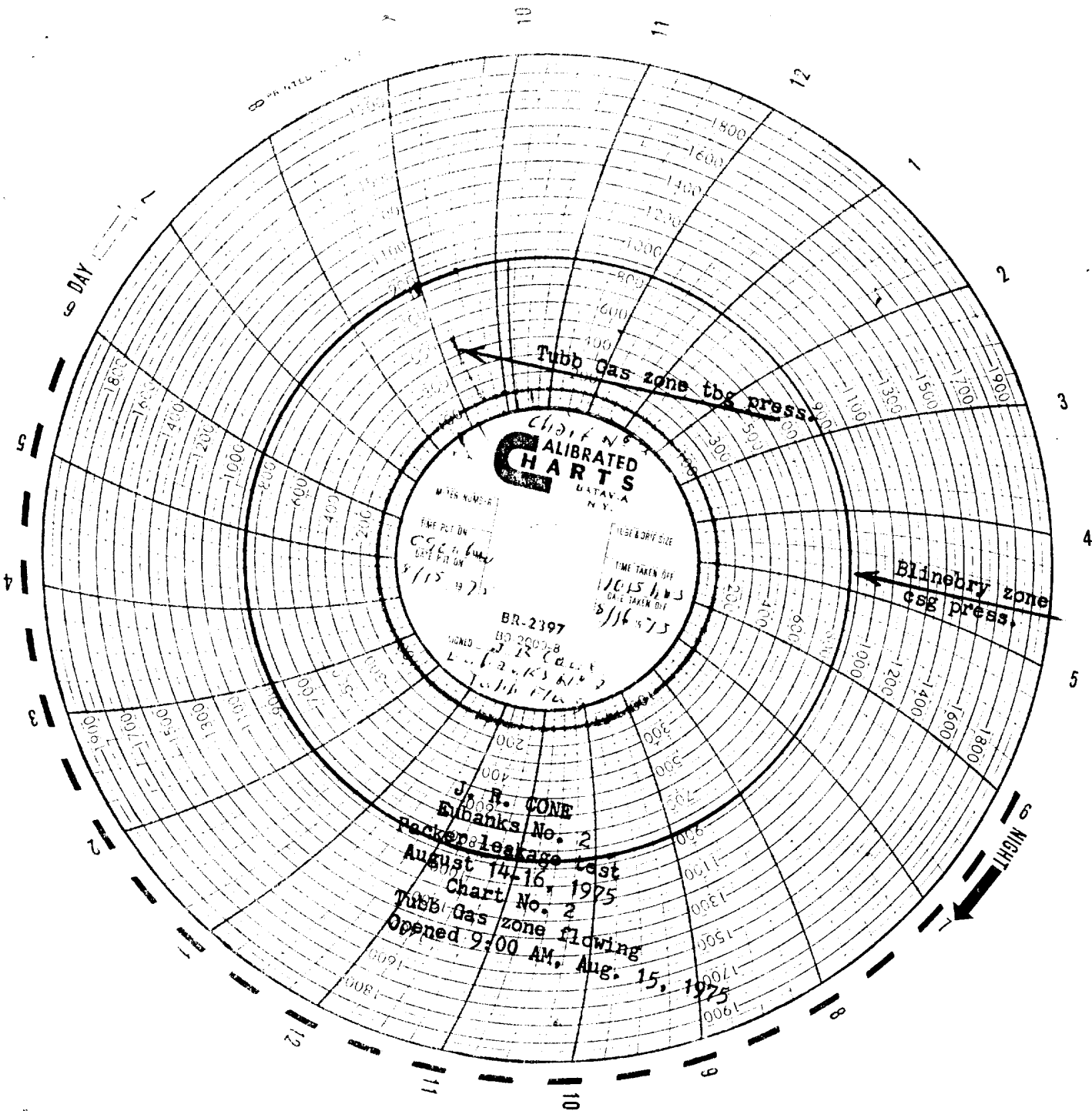


CHART NO. 2  
CALIBRATED  
CHARTS  
DATAVA  
N.Y.

METER NUMBER

TIME PUT ON

DATE PUT ON

8/15 1975

TEST BODY SIZE

TIME TAKEN OFF

DATE TAKEN OFF

8/16 1975

BR-2397

SIGNED

J. R. CONE

BR-2397-8

DATE

8/15 1975

TIME

8/16 1975

DATE

8/16 1975

TIME

8/16 1975

DATE

8/16 1975

TIME

8/16 1975

DATE

8/16 1975

TIME

8/16 1975

DATE

8/16 1975

TIME

8/16 1975

DATE

8/16 1975

TIME

8/16 1975

DATE

8/16 1975

TIME

8/16 1975

DATE

8/16 1975

TIME

8/16 1975

DATE

8/16 1975

TIME

8/16 1975

DATE

8/16 1975

TIME

8/16 1975

DATE

8/16 1975

TIME

8/16 1975

DATE

8/16 1975

TIME

8/16 1975

DATE

8/16 1975

TIME

8/16 1975

DATE

8/16 1975

TIME

8/16 1975

DATE

8/16 1975

J. R. CONE  
Elhanks No. 2  
Packer leakage test  
August 14-16, 1975  
Chart No. 2  
Tubb Gas zone flowing  
Opened 2:00 AM, Aug. 15, 1975

Tubb Gas zone tbg press.

Blinberry zone  
csg press.

OCT 27 1975

U.S. CONSERVATION COMM.  
HOBBS, N. M.

NEW MEXICO OIL CONSERVATION COMMISSION  
SOUTHEAST NEW MEXICO PACKER LEAKAGE TEST

Operator J. R. CONE			Lease Eubanks			Well No. 2	
Location of Well	Unit L	Sec 14	Twp 21-South	Rge 37-East	County Lea		
Name of Reservoir or Pool			Type of Prod (Oil or Gas)	Method of Prod Flow, Art Lift	Prod. Medium (Tbg or Csg)	Choke Size	
Upper Compl	Blinebry Gas		None	Shut In	Tubing	None	
Lower Compl	Tubb Gas		Gas	Flow	Tubing	1" est.	

FLOW TEST NO. 1

Blinebry zone shut in January 1, 1972.

Both zones shut-in at (hour, date): Tubb zone shut in 9:30 AM, December 27, 1973

Well opened at (hour, date): 9:30 AM, December 28, 1973

	Upper Completion	Lower Completion
Indicate by ( X ) the zone producing.....		X
Pressure at beginning of test.....	870	600
Stabilized? (Yes or No).....	Yes	No
Maximum pressure during test.....	870	600
Minimum pressure during test.....	870	100
Pressure at conclusion of test.....	865	100
Pressure change during test (Maximum minus Minimum).....	- 5	- 500
Was pressure change an increase or a decrease?.....	Decrease	Decrease
Well closed at (hour, date): Not shut in	Total Time On Production 24/00 hours	
Oil Production	Gas Production	
During Test: 11.5 bbls; Grav. 46.3° API	During Test 696.0 MCF; GOR 60,522	

Remarks Blinebry zone under Unit L of Section 14 is dedicated to J. R. Cone Eubanks No. 3 under NSP 859 effective January 1, 1972. Blinebry zone not produced during this test.

FLOW TEST NO. 2

	Upper Completion	Lower Completion
Well opened at (hour, date):		
Indicate by ( X ) the zone producing.....		
Pressure at beginning of test.....		
Stabilized? (Yes or No).....		
Maximum pressure during test.....		
Minimum pressure during test.....		
Pressure at conclusion of test.....		
Pressure change during test (Maximum minus Minimum).....		
Was pressure change an increase or a decrease?.....		
Well closed at (hour, date)	Total time on Production	
Oil Production	Gas Production	
During Test: bbls; Grav. ;	During Test MCF; GOR	

Remarks This is a conventional dual completion utilizing two strings of 2-1/16-inch tubing.

I hereby certify that the information herein contained is true and complete to the best of my knowledge.

Approved \_\_\_\_\_ 19 \_\_\_\_\_  
New Mexico Oil Conservation Commission

Operator J. R. CONE  
By L. O. Storm

By \_\_\_\_\_  
Title \_\_\_\_\_

Title Engineer  
Date January 6, 1973