

SOUTHEAST NEW MEXICO PACKER LEAKAGE TEST

Operator SHELL OIL COMPANY				Lease ANDREWS		Well No. 1	
Location of Well	Unit F	Sec 14	Twp 21	Rge 37	County Lea		
	Name of Reservoir or Pool		Type of Prod (Oil or Gas)	Method of Prod Flow, Art Lift	Prod. Medium (Tbg or Csg)	Choke Size	
Upper Compl	Blinebry		Oil	Flow	Tbg.	T.A.	
Lower Compl	Drinkard		Oil	Flow	Tbg.		

FLOW TEST NO. 1

Both zones shut-in at (hour, date): 1:00 pm 2-16-80

Well opened at (hour, date): 1:00 pm 2-17-80	Upper Completion	Lower Completion
Indicate by ( X ) the zone producing.....		X
Pressure at beginning of test.....	0	517
Stabilized? (Yes or No).....	T.A.	Yes
Maximum pressure during test.....	0	517
Minimum pressure during test.....	0	26
Pressure at conclusion of test.....	0	26
Pressure change during test (Maximum minus Minimum).....	0	- 491
Was pressure change an increase or a decrease?.....	Same	Decrease
Well closed at (hour, date): 1:00 pm 2-18-80	Total Time On Production 24 hrs.	
Oil Production	Gas Production	
During Test: 1 bbls; Grav. 35 1/2 @ 60; During Test MCF; GOR		
Remarks Blinebry Zone T.A.		

FLOW TEST NO. 2

Well opened at (hour, date):	Upper Completion	Lower Completion
Indicate by ( X ) the zone producing.....	T.A.	
Pressure at beginning of test.....	0	26
Stabilized? (Yes or No).....		
Maximum pressure during test.....	0	510
Minimum pressure during test.....	0	26
Pressure after 24 hr. shut in period	0	510
Pressure change during test (Maximum minus Minimum).....	0	+ 484
Was pressure change an increase or a decrease?.....	Same	Increase
Well closed at (hour, date): 1:00 pm 2-19-80	Total time on Production	
Oil Production	Gas Production	
During Test: bbls; Grav. ; During Test MCF; GOR		
Remarks Shut in pressure test for 24 hrs. only. Blinebry Zone T.A. could not follow well.		

I hereby certify that the information herein contained is true and complete to the best of my knowledge.

Approved \_\_\_\_\_ 19  
New Mexico Oil Conservation Commission

By \_\_\_\_\_  
Title \_\_\_\_\_

Operator Shell Oil Company

By \_\_\_\_\_ A. Ramirez

Title Supervisor Oil Accounting

Date 2-26-80

1. A packer leakage test shall be commenced on each multiple completed well within seven days after actual completion of the well and annually thereafter as prescribed by the order authorizing the multiple completion. Such tests shall also be commenced on all multiple completions within seven days following recompletion and/or chemical or fracture treatment, and whenever remedial work has been done on a well during which the packer or the tubing have been disturbed. Tests shall also be taken at any time that communication is suspected or when requested by the Commission.

2. At least 72 hours prior to the commencement of any packer leakage test the operator shall notify the Commission in writing of the exact time the test is to be commenced. Offset operators shall also be so notified.

3. The packer leakage test shall commence when both zones of the dual completion are shut-in for pressure stabilization. Both zones shall remain shut-in until the well-head pressure in each has stabilized and for a minimum of two hours thereafter, provided however, that they need not remain shut-in more than 24 hours.

4. For Flow Test No. 1, one zone of the dual completion shall be produced at the normal rate of production while the other zone remains shut-in. This test shall be continued until the flowing wellhead pressure has become stabilized and for a minimum of two hours thereafter, provided however, that the flow test need not continue for more than 24 hours.

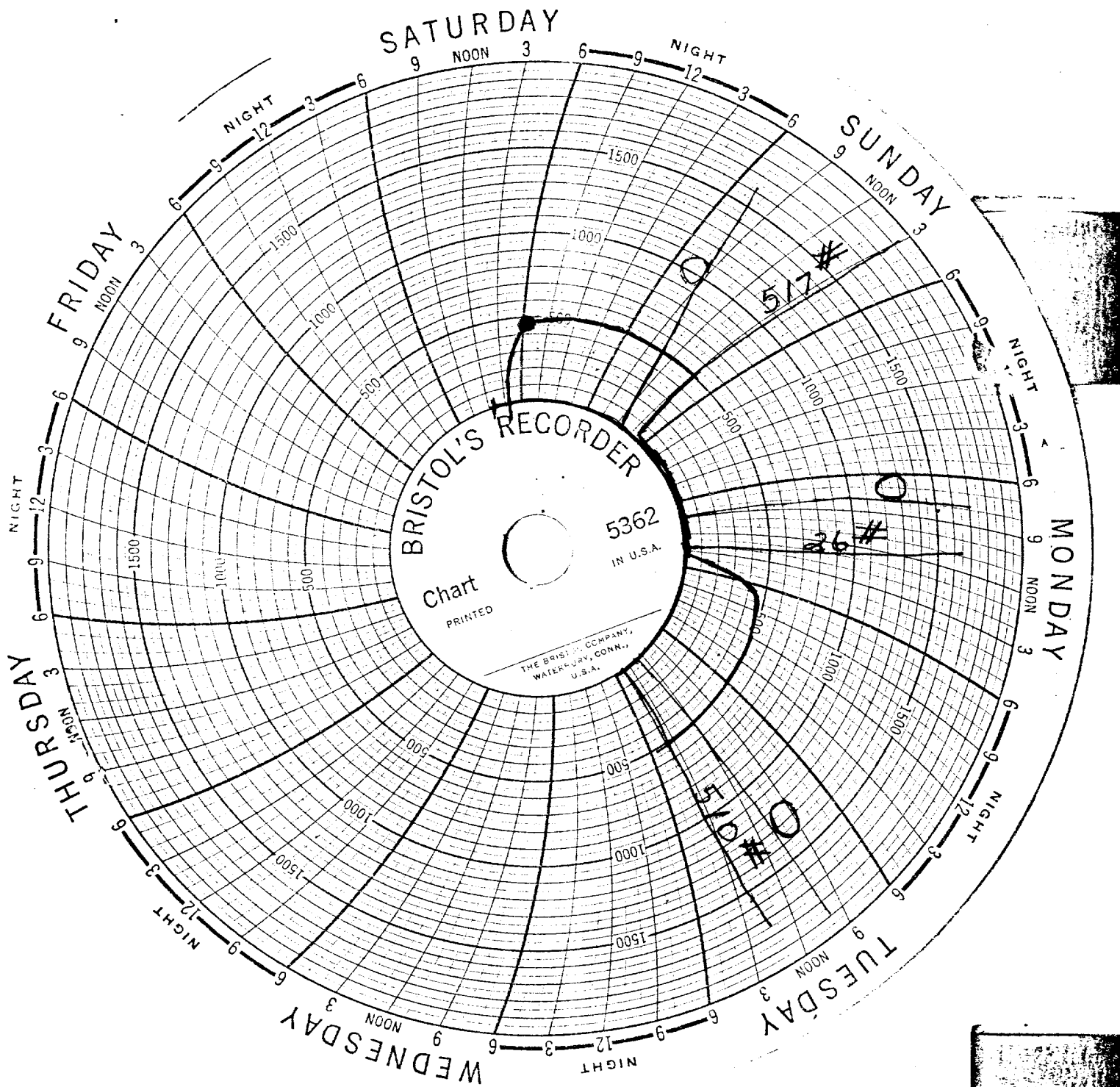
3. Following completion of Flow Test No. 1, the well shall again be shut-in, in accordance with Paragraph 3 above.

5. Flow Test No. 2 shall be conducted even though no leak was indicated during Flow Test No. 1. Procedure for Flow Test No. 2 is to be the same as for Flow Test No. 1 except that the previously produced zone shall remain shut-in while the previously shut-in zone is produced.

7. All pressures, throughout the entire test, shall be continuously measured and recorded with recording pressure gauges, the accuracy of which must be checked with a deadweight tester at least twice, once at the beginning and once at the end, of each flow test.

5. The results of the above-described tests shall be filed in triplicate within 15 days after completion of the test. Tests shall be filed with the appropriate District Office of the New Mexico Oil Conservation Commission on Southeast New Mexico Packer Leakage Test Form Revised 11-1-58, together with the original pressure recording gauge charts with all the leadweight pressures which were taken indicated thereon. In lieu of filing the aforesaid charts, the operator may construct a pressure versus time curve for each zone of each test, indicating thereon all pressure changes which may be reflected by the gauge charts as well as all leadweight pressure readings which were taken. The pressure curve is substituted for the original chart and must be permanently filed in the operator's office. Form C-116 shall also accompany the Packer Leakage Test Form when the test period coincides with a gas-oil ratio test period.

[illegible]



PAINTS CHANGE TEST

11-DRAW'S #1

ON 6 11:07 PM 2-16-80

OFF 6 11:22 PM 2-17-80

DRINKING BLUE PEN

BRANDY = RED PEN

RECEIVED

FEB 29 1980

OIL CONSERVATION DIV.