

DISTRICT I
P.O. Box 1980, Hobbs, NM 88241-1980
DISTRICT II
P.O. Box Drawer DD, Artesia, NM 88211-0719
DISTRICT III
1000 Rio Brazos Rd., Aztec, NM 87410
DISTRICT IV
P.O. Box 2088, Santa Fe, NM 87504-2088

State of New Mexico
Energy, Minerals and Natural Resources Department
OIL CONSERVATION DIVISION
P.O. Box 2088
Santa Fe, New Mexico 87504-2088

Form C-101
Revised February 10, 1999
Instructions on back
Submit to Appropriate District Office
State Lease - 6 Copies
Fee Lease - 5 Copies
AMENDED REPORT

APPLICATION FOR PERMIT TO DRILL, RE-ENTER, DEEPEN, PLUGBACK, OR ADD A ZONE

¹ Operator Name and Address TEXACO EXPLORATION & PRODUCTION INC. 205 E. Bender, HOBBS, NM 88240		² OGRID Number 022351
⁴ Property Code 011110	⁵ Property Name STATE -S-	³ API Number 3002506609
		⁶ Well No. 2

⁷ Surface Location									
UI or lot no	Section	Township	Range	Lot.Idn	Feet From The	North/South Line	Feet From The	East/West Line	County
C	15	21-S	37-E		660	NORTH	1980	WEST	LEA

⁸ Proposed Bottom Hole Location If Different From Surface									
UI or lot no	Section	Township	Range	Lot.Idn	Feet From The	North/South Line	Feet From The	East/West Line	County
⁹ Proposed Pool 1 HARE SAN ANDRES OK GAS					¹⁰ Proposed Pool 2				

¹¹ Work Type Code P	¹² WellType Code O	¹³ Rotary or C.T.	¹⁴ Lease Type Code S	¹⁵ Ground Level Elevation 3456' DF
¹⁶ Multiple No	¹⁷ Proposed Depth 6662	¹⁸ Formation SAN ANDRES	¹⁹ Contractor	²⁰ Spud Date 12/15/00

²¹ Proposed Casing and Cement Program					
SIZE OF HOLE	SIZE OF CASING	WEIGHT PER FOOT	SETTING DEPTH	SACKS OF CEMENT	EST. TOP
17 1/2"	13 3/8"		280'	300 SXS, CIRC	
11"	8 5/8"		2603'	1200 SXS, CIRC	
7 3/8"	5 1/2"		6630'	500 SXS, TOC @ 3623'	

²² Describe the proposed program. If this application is to DEEPEN or PLUG BACK give the data on the present productive zone and proposed new productive zone. Describe the blowout prevention program, if any. Use additional sheets if necessary.

TEXACO INTENDS TO RECOMPLETE THE SUBJECT WELL FROM THE GRAYBURG FORMATION TO THE SAN ANDRES FORMATION.
INTENDED PROCEDURE IS AS FOLLOWS:

- 1) MIRUPU. NUBOP. TIH W/CMT RET & SET @ 3810'.
- 2) SQZ GRAYBURG PERFS 3840-3944 W/300 SX CL C CMT. TIH W/BIT, DC'S & WS. DRILL OUT RET & CMT & WASH TO 5515'.
- 3) TIH W/PERF GUN & PERF 4020-30 W/4 JSPF @ 120 DEG PHASING. TIH W/PKR & SET @ 4000'.
- 4) SPOT ACID TO 4020' & ACIDIZE SAN ANDRES FORMATION W/2000 GALS 15% HCL.
- 5) SWAB TEST. REL PKR.
- 6) TIH W/PROD EQPT & PLACE ON PUMP.

Permit Expires 1 Year From Approval
Date Unless Drilling Underway
Plug-Back

²³ I hereby certify that the rules and regulations of the Oil Conservation Division have been complied with and that the information given above is true and complete to the best of my knowledge and belief.

Signature

J. Denise Leake

Printed Name

J. Denise Leake

Title

Engineering Assistant

Date

11/28/00

Telephone

397-0405

OIL CONSERVATION DIVISION

ORIGINAL SIGNED BY CHRIS WILLIAMS
Approved By: DISTRICT ENGINEER, MORGAN

Title:

Approval Date: DEC 07 2000

Expiration Date:

Conditions of Approval:

Attached

DISTRICT I

P.O. Box 1980, Hobbs, NM 88241-1980

DISTRICT II

P.O. Box Drawer DD, Artesia, NM 88211-0719

DISTRICT III

1000 Rio Brazos Rd., Aztec, NM 87410

DISTRICT IV

P.O. Box 2088, Santa Fe, NM 87504-2088

State of New Mexico

Energy, Minerals and Natural Resources Department

Form C-10 2

Revised February 10, 1999

Instructions on back

Submit to Appropriate District Office

State Lease - 4 Copies

Fee Lease - 3 Copies

AMENDED REPORT

OIL CONSERVATION DIVISION

P.O. Box 2088

Santa Fe, New Mexico 87504-2088

WELL LOCATION AND ACREAGE DEDICATION PLAT

1 API Number 3002506609	2 Pool Code <i>96601 28080</i>	3 Pool Name HARE SAN ANDRES Oil GAS
4 Property Code 011110	5 Property Name STATE -S-	6 Well No. 2
7 OGRID Number 022351	8 Operator Name TEXACO EXPLORATION & PRODUCTION INC.	9 Elevation 3456' DF

10 Surface Location

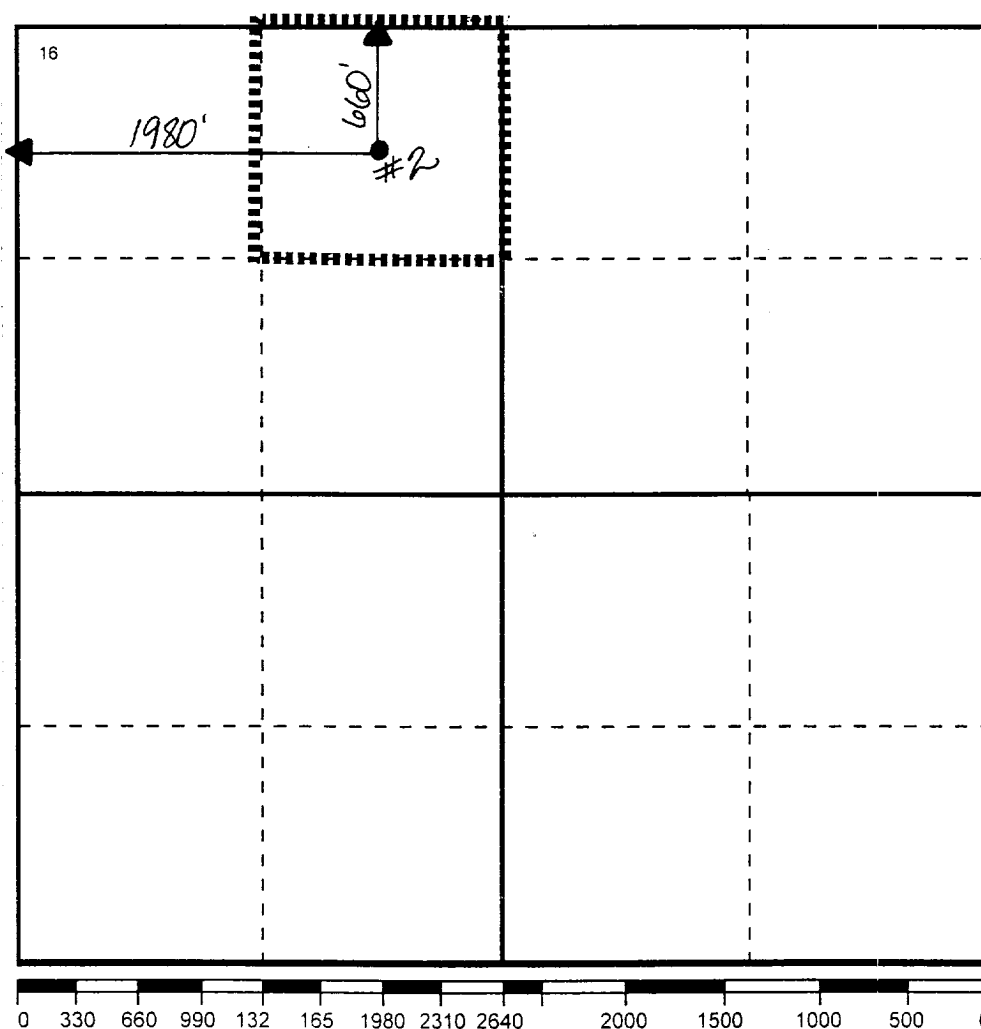
UI or lot no	Section	Township	Range	Lot.Idn	Feet From The	North/South Line	Feet From The	East/West Line	County
C	15	21-S	37-E		660	NORTH	1980	WEST	LEA

11 Bottom Hole Location If Different From Surface

UI or lot no	Section	Township	Range	Lot.Idn	Feet From The	North/South Line	Feet From The	East/West Line	County
--------------	---------	----------	-------	---------	---------------	------------------	---------------	----------------	--------

12 Dedicated Acre 40	13 Joint or Infill No	14 Consolidation Code	15 Order No.
-------------------------	--------------------------	-----------------------	--------------

NO ALLOWABLE WILL BE ASSIGNED TO THIS COMPLETION UNTIL ALL INTERESTS HAVE BEEN CONSOLIDATED
OR A NON-STANDARD UNIT HAS BEEN APPROVED BY THE DIVISION



17 OPERATOR CERTIFICATION

I hereby certify that the information contained herein is true and complete to the best of my knowledge and belief

Signature

J. Denise Leake

Printed Name

J. Denise Leake

Position

Engineering Assistant

Date

11/28/00

18 SURVEYOR CERTIFICATION

I hereby certify that the well location shown on this plat was plotted from field notes of actual surveys made by me or under my supervision, and that the same is true and correct to the best of my knowledge and belief.

Date Surveyed

Signature & Seal of

Professional Surveyor

Certificate No.