



Getty Oil Company

NMOCC-Hobbs

MID-CONTINENT EXPLORATION AND PRODUCTION DIVISION

~~XX~~

P. O. Box 249
Hobbs, New Mexico 88240

February 25, 1975

New Mexico Oil Conservation Commission
P. O. Box 2088
Santa Fe, New Mexico 87501

Re: Revised Acreage Dedication
GETTY'S STATE "S" WELL NO. 3
Blinebry Field
Lea County, New Mexico

Gentlemen:

On December 20, 1971 Getty Oil Company made application for a Non-Standard Gas Proration Unit to the New Mexico Oil Conservation Commission. Getty's State "S" Wells Nos. 3 and 8 were reclassified from Oil Wells to Gas Wells. Getty requested that the 80 acres be allocated to their State "S" Well No. 3. State "S" Well No. 8 was shut-in. This application was granted by NMOCC Administrative Order No. NSP-853 on January 21, 1972.

On March 28, 1973 Getty made application to amend this unit to include Getty's State "S" Well No. 8. This application was granted by an Amendment to NMOCC Administrative Order NSP-853 on April 30, 1973.

Getty's State "S" Well No. 8 was put on production on February 18, 1975. This production test classifies Well No. 8 as an Oil Well. See C-116 attached.

Getty Oil Company respectfully requests an Amendment to Administrative Order NSP-853 to reduce the allocated acreage to 40 for Getty's State "S" Well No. 3 in Unit B; Section 15 T-21-S, R-37-E.

The Offset Operators have been furnished with copies of this letter with the attachments.

Very truly yours,
GETTY OIL COMPANY
Original Signed By
C. L. Wade
Area Superintendent

2 C - NMOCC
P.O. Box 2088
Santa Fe, New Mexico 87501

1 C - Continental Oil Company
P.O. Box 460
Hobbs, New Mexico 88240

1 C - Gulf Oil Company
P.O. Box 670
Hobbs, New Mexico 88240

1 C - Getty Oil Company
P.O. Box 1231
Midland, Texas 79701

1 C - Humble Oil Co.-Exxon
1700 West Broadway
Andrews, Texas 79714

1 C - Getty Oil Company (FILE)
P.O. Box 249
Hobbs, New Mexico 88240

1 C - Shell Oil Company
P.O. Box 1509
Midland, Texas 79701

1 C - Cities Service
P.O. Box 4906
Midland, Texas 79701

HBS/bh
ATTACHMENT

NEW MEXICO OIL CONSERVATION COMMISSION
WELL LOCATION AND ACREAGE DEDICATION PLAT

Form C-102
Supersedes C-128
Effective 1-1-65

All distances must be from the outer boundaries of the Section.

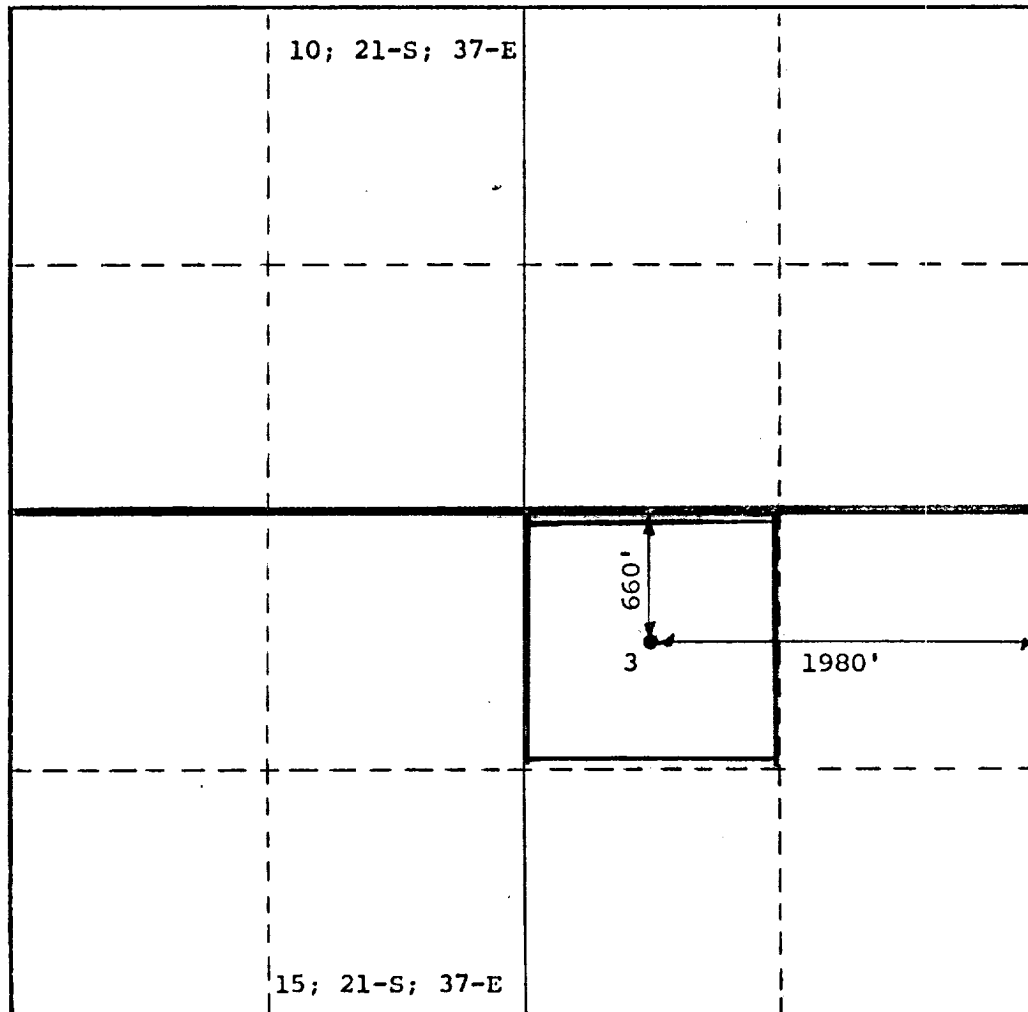
| | | | | | |
|---|--|-------------------------|---------------------------|----------------------|---------------------------------------|
| Operator GETTY OIL COMPANY | | | Lease STATE "S" | | Well No. 3 |
| Unit Letter B | Section 15 | Township 21-S | Range 37-E | County LEA | |
| Actual Footage Location of Well: <div style="display: flex; justify-content: space-between;"> 660 feet from the NORTH line and 1980 feet from the EAST line </div> | | | | | |
| Ground Level Elev. 3448 | Producing Formation BLINEBRY | | Pool BLINEBRY | | Dedicated Acreage: 40 Acres |

1. Outline the acreage dedicated to the subject well by colored pencil or hachure marks on the plat below.
2. If more than one lease is dedicated to the well, outline each and identify the ownership thereof (both as to working interest and royalty).
3. If more than one lease of different ownership is dedicated to the well, have the interests of all owners been consolidated by communitization, unitization, force-pooling, etc?

☐ Yes ☐ No If answer is "yes," type of consolidation _____

If answer is "no," list the owners and tract descriptions which have actually been consolidated. (Use reverse side of this form if necessary.) _____

No allowable will be assigned to the well until all interests have been consolidated (by communitization, unitization, forced-pooling, or otherwise) or until a non-standard unit, eliminating such interests, has been approved by the Commission.



CERTIFICATION

I hereby certify that the information contained herein is true and complete to the best of my knowledge and belief.

Original Signed By
C. L. Wade

Name

C. L. WADE

Position

AREA SUPERINTENDENT

Company

GETTY OIL COMPANY

Date

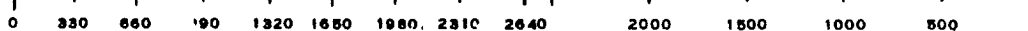
FEBRUARY 25, 1975

I hereby certify that the well location shown on this plat was plotted from field notes of actual surveys made by me or under my supervision, and that the same is true and correct to the best of my knowledge and belief.

Date Surveyed

Registered Professional Engineer
and/or Land Surveyor

Certificate No.



C-116
Revised 1-1-65

No well will be assigned an allowable greater than the amount of oil produced on the official test.

During gas-oil ratio test, each well shall be produced at a rate not exceeding the top unit allowable for the pool in which well is located by more than 25 percent. Operator is encouraged to take advantage of this 25 percent tolerance in order that well can be assigned increased allowables when authorized by the Commission.

Gas volumes must be reported in MCF measured at a pressure base of 15.025 psia and a temperature of 60° F. Specific gravity base will be 0.60.

Report casing pressure in lieu of tubing pressure for any well producing through casing.

Mail original and one copy of this report to the district office of the New Mexico Oil Conservation Commission in accordance with Rule 301 and appropriate pool rules.

I hereby certify that the above information is true and complete to the best of my knowledge and belief.

Original Signed By
C. L. Wade

C. L. Wade:

AREA SUPERINTENDENT

February 25, 1975 ^(Tide)

STATE "S" LEASE
BLINEBRY FIELD
LEA COUNTY, NEW MEXICO