

SOUTHEAST NEW MEXICO PACKER LEAKAGE TEST

Operator <b>Tidewater Oil Company</b>			Lease <b>Percy Hardy</b>			Well No. <b>2</b>	
Location of Well	Unit <b>0</b>	Sec <b>17</b>	Twp <b>21-S</b>	Rge <b>37-E</b>	County <b>Lea</b>		
	Name of Reservoir or Pool		Type of Prod (Oil or Gas)	Method of Prod Flow, Art Lift	Prod. Medium (Tbg or Csg)	Choke Size	
Upper Compl	<b>Tubb</b>		<b>Gas</b>	<b>Flow</b>	<b>Csg.</b>	<b>-</b>	
Lower Compl	<b>Drinkard</b>		<b>Oil</b>	<b>Flow</b>	<b>Tbg.</b>	<b>16/64</b>	

FLOW TEST NO. 1

Both zones shut-in at (hour, date): 8:00 A.M., 3-14-65

	Upper Completion	Lower Completion
Well opened at (hour, date): <u>8:30 A.M., 3-15-65</u>		
Indicate by ( X ) the zone producing.....	<u>X</u>	
Pressure at beginning of test.....	<u>380</u>	<u>250</u>
Stabilized? (Yes or No).....	<u>No</u>	<u>No</u>
Maximum pressure during test.....	<u>380</u>	<u>255</u>
Minimum pressure during test.....	<u>200</u>	<u>250</u>
Pressure at conclusion of test.....	<u>220</u>	<u>255</u>
Pressure change during test (Maximum minus Minimum).....	<u>180</u>	<u>5</u>
Was pressure change an increase or a decrease?.....	<u>Decrease</u>	<u>Increase</u>
Well closed at (hour, date): <u>8:15 A.M., 3-16-65</u>	Total Time On Production <u>23 Hrs. - 45 Min.</u>	
Oil Production	Gas Production	
During Test: <u>0</u> bbls; Grav. <u>-</u> ; During Test <u>38</u> MCF; GOR <u>-</u>		
Remarks _____		

FLOW TEST NO. 2

Well opened at (hour, date): <u>8:15 A.M., 3-17-65</u>	Upper Completion	Lower Completion
Indicate by ( X ) the zone producing.....		<u>X</u>
Pressure at beginning of test.....	<u>370</u>	<u>280</u>
Stabilized? (Yes or No).....	<u>No</u>	<u>Yes</u>
Maximum pressure during test.....	<u>385</u>	<u>280</u>
Minimum pressure during test.....	<u>370</u>	<u>90</u>
Pressure at conclusion of test.....	<u>385</u>	<u>90</u>
Pressure change during test (Maximum minus Minimum).....	<u>15</u>	<u>190</u>
Was pressure change an increase or a decrease?.....	<u>Increase</u>	<u>Decrease</u>
Well closed at (hour, date): <u>8:15 A.M., 3-18-65</u>	Total time on Production <u>24 Hrs.</u>	
Oil Production	Gas Production	
During Test: <u>8</u> bbls; Grav. <u>36.9</u> ; During Test <u>41</u> MCF; GOR <u>5125</u>		
Remarks _____		

I hereby certify that the information herein contained is true and complete to the best of my knowledge.

Approved \_\_\_\_\_ 19 \_\_\_\_\_  
New Mexico Oil Conservation Commission

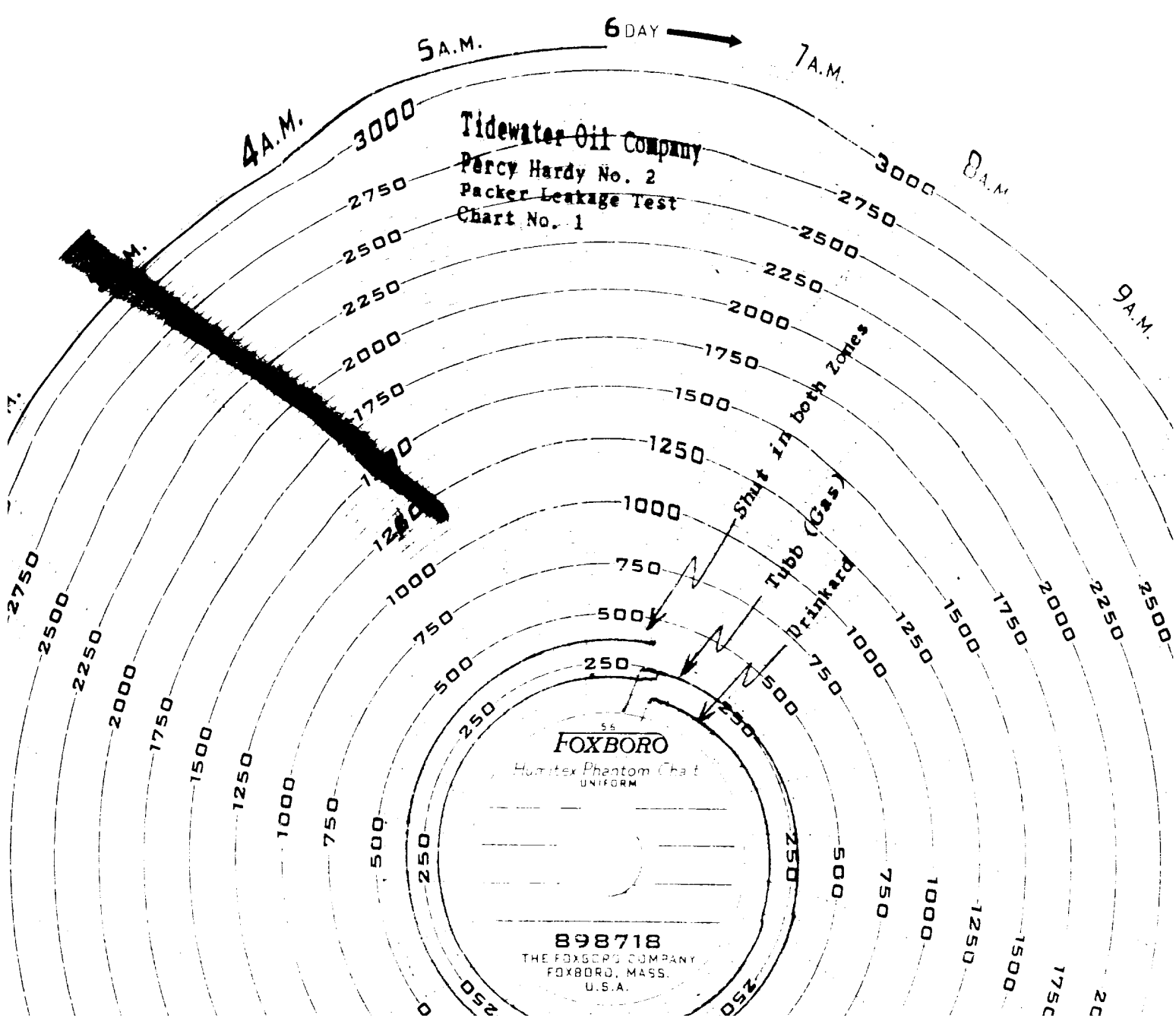
Operator Tidewater Oil Company  
By Original Signed By  
C. L. WADE

By \_\_\_\_\_  
Title \_\_\_\_\_

Title Area Supt.  
Date \_\_\_\_\_

४

5. Following completion of Flow Test No. 1, the well shall be shut-in in accordance with Paragraph 3 above.
6. Flow Test No. 2 shall be conducted even though no leak was detected during Flow Test No. 1. Procedure for Flow Test No. 2 is the same as for Flow Test No. 1 except that the previously produced zone shall remain shut-in while the previously shut-in zone is produced.
7. All pressures, throughout the entire test, shall be continuously measured and recorded with recording pressure gauges, the accuracy of which must be checked with a deadweight tester at least twice beginning and once at the end, of each flow test.
8. The results of the above-described tests shall be filed within 15 days after completion of the test. Tests shall be filed with the appropriate District Office of the New Mexico Oil Conservation Commission on Southeast New Mexico Packer Leakage Test Form Rev. 1-55, together with the original pressure recording gauge charts and deadweight pressure readings which were taken indicated thereon. In filing the aforesaid charts, the operator may construct a pressure-time curve for each zone of each test, indicating thereon all changes which may be reflected by the gauge charts as well as weight pressure readings which were taken. If the pressure is permitted, the original chart must be permanently filed in the District Office. Form C-116 shall also accompany the Packer Leakage Test when the test period coincides with a gas-oil ratio test period.



Tidewater Oil Company  
Percy Hardy No. 2  
Packer Leakage Test  
Chart No. 1

56  
**FOXBORO**

Humitex Phantom Chart  
UNIFORM

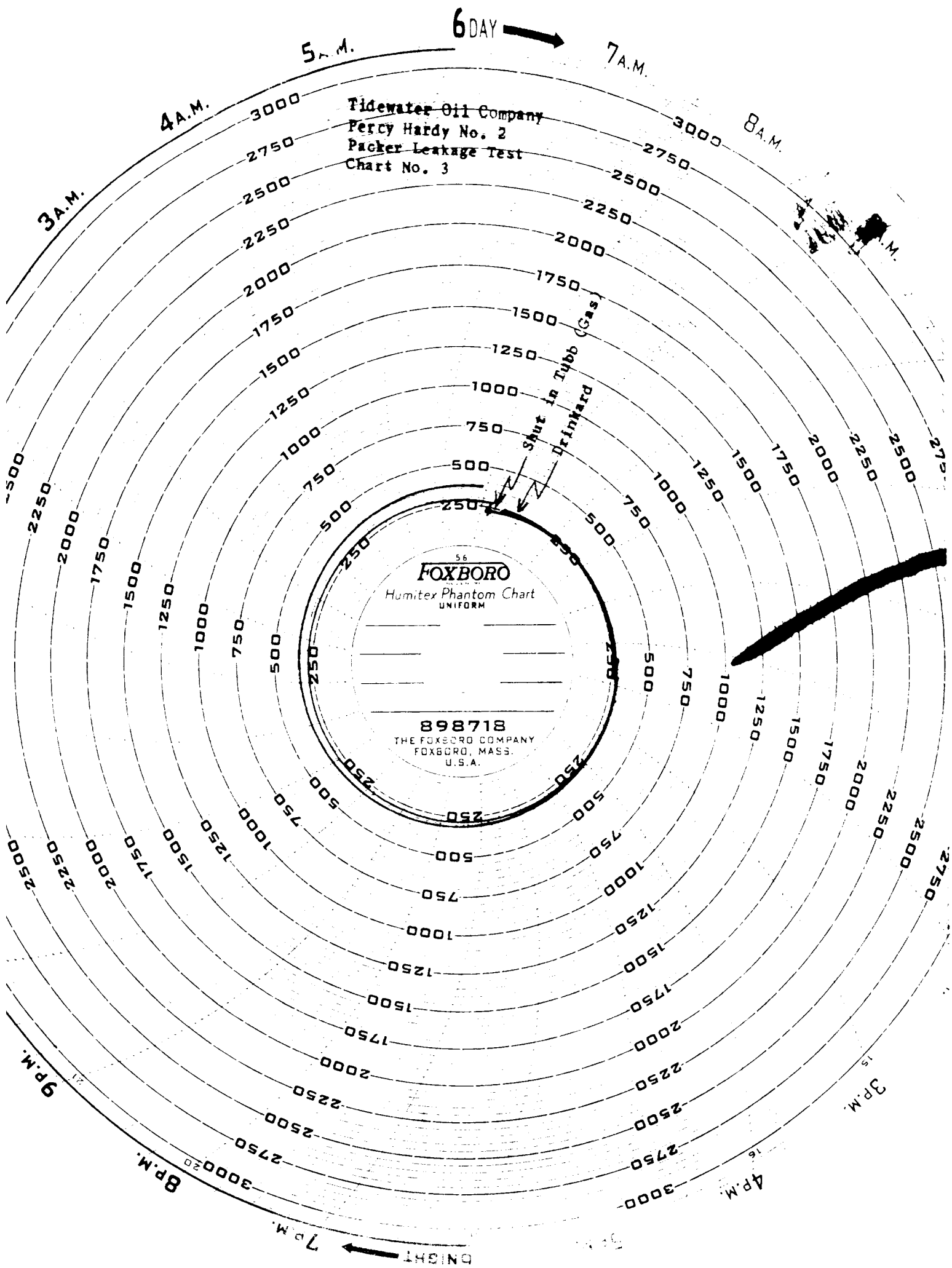
**898718**

THE FOXBORO COMPANY  
FOXBORO, MASS.  
U.S.A.

\_\_\_\_\_

\_\_\_\_\_

\_\_\_\_\_



Tidewater Oil Company  
Percy Hardy No. 2  
Packer Leakage Test  
Chart No. 3

56  
**FOXBORO**

Humitex Phantom Chart  
UNIFORM

898718

THE FOXBORO COMPANY  
FOXBORO, MASS.  
U.S.A.

Shut in Tubb (Gas)





\_\_\_\_\_



NEW MEXICO OIL CONSERVATION COMMISSION 3-OCC  
SOUTHEAST NEW MEXICO PACKER LEAKAGE TEST

Operator <b>Tidewater Oil Company</b>			Lease <b>Percy Hardy</b>			Well No. <b>2</b>	
Location of Well	Unit <b>0</b>	Sec <b>17</b>	Twp <b>21-S</b>	Rge <b>37-E</b>	County <b>Lea</b>		
	Name of Reservoir or Pool		Type of Prod (Oil or Gas)	Method of Prod Flow, Art Lift	Prod. Medium (Tbg or Csg)	Choke Size	
Upper Compl	<b>Tubb</b>		<b>Gas</b>	<b>Flow</b>	<b>Casing</b>	<b>-</b>	
Lower Compl	<b>Drinkard</b>		<b>Oil</b>	<b>Flow</b>	<b>Tubing</b>	<b>16/64"</b>	

FLOW TEST NO. 1

Both zones shut-in at (hour, date): 9:00 A.M., 2-13-64

	Upper Completion	Lower Completion
Well opened at (hour, date): <u>9:00 A.M., 2-14-64</u>		
Indicate by ( X ) the zone producing.....	<u>X</u>	
Pressure at beginning of test.....	<u>240</u>	<u>710</u>
Stabilized? (Yes or No).....	<u>Yes</u>	<u>No</u>
Maximum pressure during test.....	<u>240</u>	<u>925</u>
Minimum pressure during test.....	<u>210</u>	<u>710</u>
Pressure at conclusion of test.....	<u>210</u>	<u>925</u>
Pressure change during test (Maximum minus Minimum).....	<u>30</u>	<u>215</u>
Was pressure change an increase or a decrease?.....	<u>Decrease</u>	<u>Increase</u>
Well closed at (hour, date): <u>9:00 A.M., 2-15-64</u>	Total Time On Production <u>24 hours</u>	
Oil Production	Gas Production	
During Test: <u>0</u> bbls; Grav. <u>-</u>	During Test <u>25.</u> MCF; GOR <u>-</u>	
Remarks _____		

FLOW TEST NO. 2

	Upper Completion	Lower Completion
Well opened at (hour, date): <u>9:00 A.M., 2-16-64</u>		
Indicate by ( X ) the zone producing.....		<u>X</u>
Pressure at beginning of test.....	<u>240</u>	<u>1100</u>
Stabilized? (Yes or No).....	<u>No</u>	<u>No</u>
Maximum pressure during test.....	<u>250</u>	<u>1100</u>
Minimum pressure during test.....	<u>240</u>	<u>40</u>
Pressure at conclusion of test.....	<u>250</u>	<u>50</u>
Pressure change during test (Maximum minus Minimum).....	<u>10</u>	<u>1060</u>
Was pressure change an increase or a decrease?.....	<u>Increase</u>	<u>Decrease</u>
Well closed at (hour, date) <u>9:00 A.M., 2-17-64</u>	Total time on Production <u>24 Hours</u>	
Oil Production	Gas Production	
During Test: <u>14</u> bbls; Grav. <u>39.1</u>	During Test <u>50</u> MCF; GOR <u>3684</u>	
Remarks _____		

I hereby certify that the information herein contained is true and complete to the best of my knowledge.

Approved \_\_\_\_\_ 19 \_\_\_\_\_  
New Mexico Oil Conservation Commission

Operator Tidewater Oil Company  
Original Signed By C. L. WADE  
By \_\_\_\_\_  
Title Area Superintendent  
Date March 6. 1964

I

7

1

七

2

5

1

→E

2

6

MAR 10 3 50 PM '54