



NORTH AMERICAN EXPLORATION AND PRODUCTION GROUP
Midland Production District

SUN OIL COMPANY 901 W. WALL, POST OFFICE BOX 1861, MIDLAND, TEXAS 79701 (915) 682-8271

December 17, 1976

State of New Mexico
Oil Conservation Commission
P. O. Box 2088
Santa Fe, New Mexico 87501

Attn: Mr. Joe D. Ramey
Secretary-Director

RE: DOWN HOLE COMMINGLING APPLICATION
J. G. RANDLE - WELL NUMBER 1

Gentlemen:

Sun Oil Company respectfully request an exception to Rule 303-A in order to permit commingling within the well bore, production from the Blinebry and Drinkard Oil Pools in Sun's J. G. Randle #1. This well is located in Unit E, and is 1980' FNL and 660' FWL of Section 20, Township 21 South, Range 37 East, NMPM, Lea County, New Mexico.

Administrative Order No. MC-1606, approving multiple completion in the Blinebry and Drinkard Oil Pools, was granted for the J. G. Randle #1 on March 17, 1965. However, the Blinebry Pool was never dually completed with the Drinkard, and was not perforated until 11-6-76, when 24 holes were shot from 5687-5874. The Drinkard zone, producing from an open hole interval 6642-6679 and from perforations 6576-6620, was isolated on 11-5-76 behind a retrievable bridge plug set at 6560. Subsequent treatment of the Blinebry perfs included acidizing with 3600 gallons of 15% NE FE HCL and fracing with 20,000 gallons gelled lease oil and 26,000# 20-40 sand.

Based on previous production test, Sun is anticipating commingled production to be 22 barrels of oil per day and 308 MCF of gas per day, as the Blinebry perfs in 24 hours produced 13 barrels of oil, no water, and 200 MCF of gas, while production from the Drinkard perfs tested 9 barrels of oil, 1 barrel of water, and 108 MCF of gas. Sun request that 59% of the oil production and 65% of the gas production be allocated to the Blinebry Pool with the remainder credited to the Drinkard.

Estimated bottom hole pressure in the Blinebry Pool is 923# based on fluid level data following an 18 hour shut-in. Bottom hole pressure in the Drinkard Pool is estimated to be 400# based on extrapolating previous pressure data versus the current cumulative production. As the pumping equipment installed on the well is capable of keeping the fluid pumped down, there should be no crossflow between producing intervals.

Page 1

-Over-

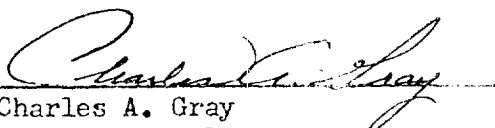
Compatibility of fluids within the well bore is assured due to a minimum of produced water. The Drinkard tested one barrel of water in 24 hours and the Blinebry produced none. Crude API gravities for the Blinebry and Drinkard zones respectively, were 34.5° and 35.4° at 60°F. Value of the commingled production will not be less than the sum of the values of the individual streams, as the value received for the 34.5° crude is \$13.73 and the value received for the 35.4° crude is \$13.80.

Listed below are the offset operators who have been notified in writing of the proposed commingling. Also, the Hobbs District Office of the New Mexico Oil Conservation Commission has been furnished a copy of this application.

Approval of this application will insure that waste has been avoided and that the practice of good conservation will aid in the recovery of additional hydrocarbons without the violation of correlative rights.

If additional information is required, please advise.

Very truly yours,
SUN OIL COMPANY


Charles A. Gray
Proration Analyst

CAG/g

cc: NMCCC - Hobbs ✓
attachments

OFFSET OPERATOR LIST

Atlantic Richfield Company
Box 1610
Midland, Texas 79701

Gulf Oil Corporation
Box 1150
Midland, Texas 79701

J. W. Peery
Box 401
Midland, Texas 79701

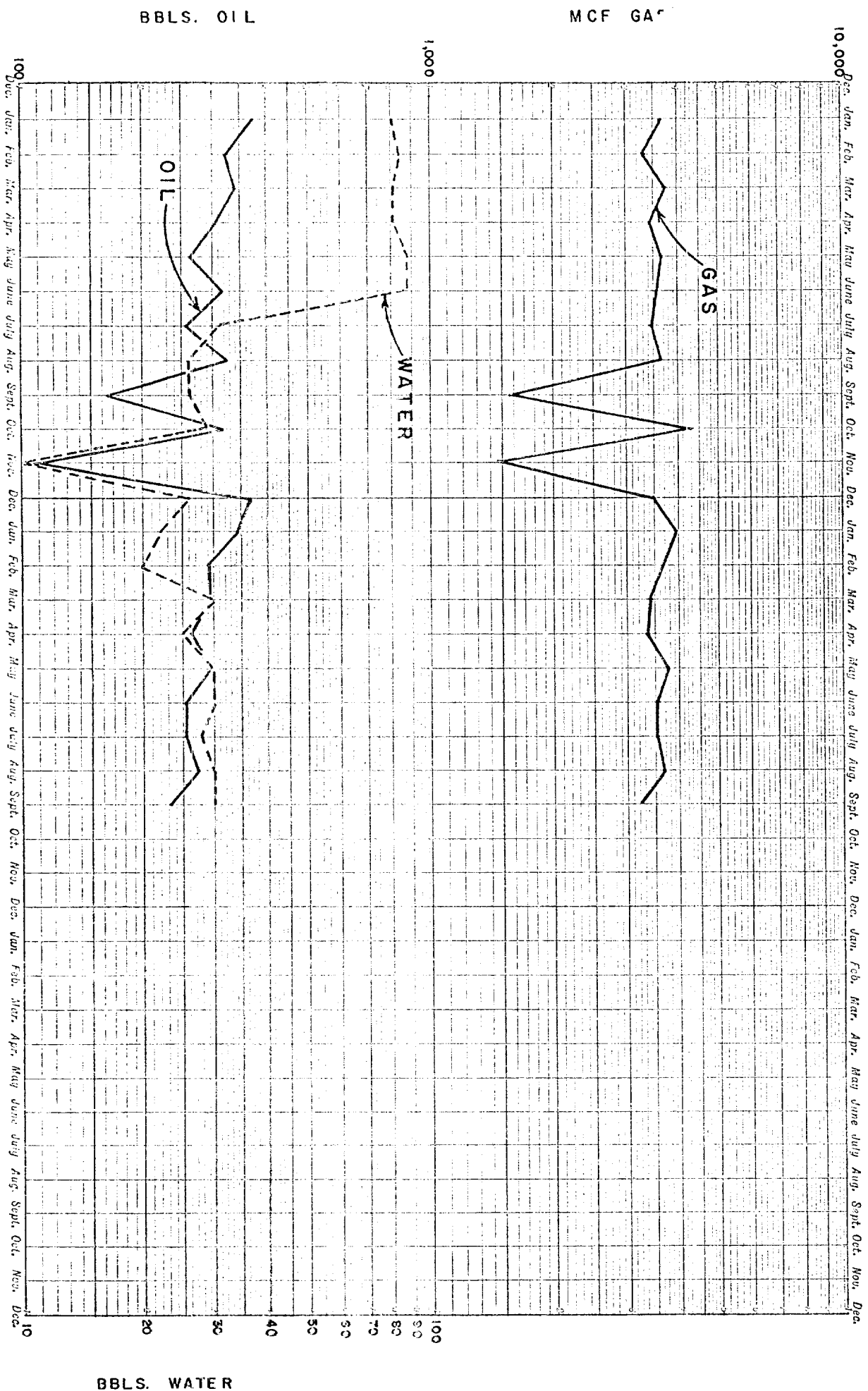
Campbell and Hedrick
Box 401
Midland, Texas 79701

Marathon Oil Company
Box 2409
Hobbs, New Mexico 88240

Petro-Lewis Corporation
Box 2250
Denver, Colorado 80201



J. G. RANDLE
MONTHLY PRODUCTION



Year of 1975

Year of 1976

Year of 19

C-116
Revised 1-1-65

No well will be assigned an allowable greater than the amount of oil produced on the official test.

During gas-oil ratio test, each well shall be produced at a rate not exceeding the top unit allowable for the pool in which well is located by more than 25 percent. Operator is encouraged to take advantage of this 25 percent tolerance in order that well can be assigned increased allowables when authorized by the Commission.

Gas volumes must be reported in MCF measured at a pressure base of 15.025 psia and a temperature of 60° F. Specific gravity base will be 0.60.

Report casing pressure in lieu of tubing pressure for any well producing through casing.

Mail original and one copy of this report to the district office of the New Mexico Oil Conservation Commission in accordance with Rule 301 and appropriate pool rules.

I hereby certify that the above information is true and complete to the best of my knowledge and belief.

Proration Analyst

12-15-76

(Date)

**NEW MEXICO OIL CONSERVATION COMMISSION
GAS-OIL RATIO TESTS**

C-116
Revised 1-1-65

Operator		SUN OIL COMPANY				Pool		BLINEBRY OIL				County		LEA			
Address		P. O. BOX 1861, MIDLAND, TEXAS 79701						TYPE OF TEST - (X)		Scheduled <input type="checkbox"/>		Completion <input type="checkbox"/>		Special <input checked="" type="checkbox"/>			
LEASE NAME		WELL NO.	LOCATION			DATE OF TEST	STATUS	CHOKE SIZE	TBG. PRESS.	DAILY ALLOW. ABLE	LENGTH OF TEST HOURS	PROD. DURING TEST			GAS - OIL RATIO CU. FT./BBL.		
J. G. RANDLE		1	E	20	21S	37E	12-10-76	P	-	30#	*See Below	24	0	34.5	13.0	200.0	15,385
Note: Blinebry zone producing on 420 barrel test allowable.																	

No well will be assigned an allowable greater than the amount of oil produced on the official test.

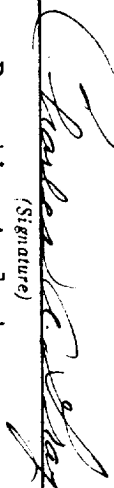
During gas-oil ratio test, each well shall be produced at a rate not exceeding the top oil allowable for the pool in which well is located by more than 25 percent. Operator is encouraged to take advantage of this 25 percent tolerance in order that well can be assigned increased allowables when authorized by the Commission.

Gas volumes must be reported in MCF measured at a pressure base of 15.025 psia and a temperature of 60° F. Specific Gravity base will be 0.60.

Report casing pressure in lieu of tubing pressure for any well producing through casing.

Mail original and one copy of this report to the district office of the New Mexico Oil Conservation Commission in accordance with Rule 301 and appropriate pool rules.

I hereby certify that the above information is true and complete to the best of my knowledge and belief.


(Signature)
Proration Analyst
12-15-76
(Date)

NEW MEXICO OIL CONSERVATION COMMISSION
GAS-OIL RATIO TESTS

C-116
Revised 1-1-65

Operator		SUN OIL COMPANY				Pool		DRINKARD OIL				County		LEA			
Address		P. O. BOX 1861, MIDLAND, TEXAS 79701				TYPE OF TEST - (X)		Schedul		Completion		Special		GAS - OIL RATIO			
LEASE NAME		WELL NO.	LOCATION			DATE OF TEST	STATE	CHOKE SIZE	TBGS. PRESS.	DAILY ALLOW-ABLE	LENGTH OF TEST HOURS	PROD. DURING TEST			GAS - OIL RATIO CU. FT./BBL.		
			U	S	T	R						WATER BBLs.	GRAV. OIL	OIL BBLs.	GAS M.C.F.		
J. G. RANDIE		1	E	20	21S	37E	10-30-76	P	-	30#	11	24	1	35.4	9.0	108.2	12,022

No well will be assigned an allowable greater than the amount of oil produced on the official test.

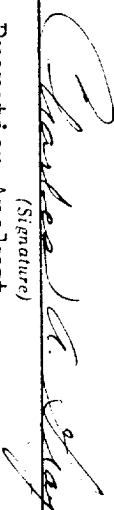
During gas-oil ratio test, each well shall be produced at a rate not exceeding the top unit allowable for the pool in which well is located by more than 25 percent. Operator is encouraged to take advantage of this 25 percent tolerance in order that well can be assigned increased allowables when authorized by the Commission.

Gas volumes must be reported in MCF measured at a pressure base of 15.025 psia and a temperature of 60° F. Specific gravity base will be 0.60.

Report casing pressure in lieu of tubing pressure for any well producing through casing.

Mail original and one copy of this report to the district office of the New Mexico Oil Conservation Commission in accordance with Rule 301 and appropriate pool rules.

I hereby certify that the above information is true and complete to the best of my knowledge and belief.


(Signature)
Proration Analyst
12-15-76
(Date)

(Date)

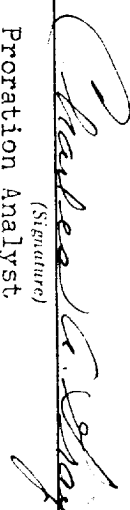
NEW MEXICO OIL CONSERVATION COMMISSION
GAS-OIL RATIO TESTS

C-116
Revised 1-1-65

Operator		SUN OIL COMPANY				Pool		DRINKARD OIL				County		LEA			
Address		P. O. BOX 1861, MIDLAND, TEXAS 79701				TYPE OF TEST - (X)		Scheduled <input type="checkbox"/>		Completion <input type="checkbox"/>		Special <input checked="" type="checkbox"/>					
LEASE NAME		WELL NO.	LOCATION			DATE OF TEST	CHOKE SIZE	TBGS. PRESS.	DAILY ALLOW-ABLE	LENGTH OF TEST HOURS	PROD. DURING TEST			GAS - OIL RATIO CU.FT/BBL.			
			U	S	T	R					WATER BBL'S.	GRAV. OIL	OIL BBL'S.	GAS M.C.F.			
J. G. RANDLE		1	E	20	21S	37E	10-30-76	P	-	30#	11	24	1	35.4	9.0	108.2	12,022

No well will be assigned an allowable greater than the amount of oil produced on the official test.
During gas-oil ratio test, each well shall be produced at a rate not exceeding the top unit allowable for the pool in which well is located by more than 25 percent. Operator is encouraged to take advantage of this 25 percent tolerance in order that well can be assigned increased allowables when authorized by the Commission.
Gas volumes must be reported in MCF measured at a pressure base of 15.025 psia and a temperature of 60° F. Specific gravity base will be 0.60.
Report casing pressure in lieu of tubing pressure for any well producing through casing.
Mail original and one copy of this report to the district office of the New Mexico Oil Conservation Commission in accordance with Rule 301 and appropriate pool rules.

I hereby certify that the above information is true and complete to the best of my knowledge and belief.


(Signature)
Proration Analyst
12-15-76
(Date)