

This form is not to be used for reporting packer leakage tests in Northwest New Mexico

NEW MEXICO OIL CONSERVATION COMMISSION
SOUTHEAST NEW MEXICO PACKER LEAKAGE TEST

| | | | | | | | |
|-------------------------------|---------------------------|---------------------------|-------------------------------|---------------------------|------------|------------|--|
| Operator Gulf Oil Corporation | | | Lease Eubank | | | Well No. 1 | |
| Location of Well | Unit B | Sec 22 | Twp 21 | Rge 37 | County Lea | | |
| | Name of Reservoir or Pool | Type of Prod (Oil or Gas) | Method of Prod Flow, Art Lift | Prod. Medium (Tbg or Csg) | Choke Size | | |
| Upper Compl | Tubb | Gas | Flow | Csg. | - | | |
| Lower Compl | Drinkard | Oil | * Standing | Tbg. | - | | |

FLOW TEST NO. 1

Both zones shut-in at (hour, date): 8:45 A.M. 1-15-73

Well opened at (hour, date): 8:45 A.M. 1-16-73

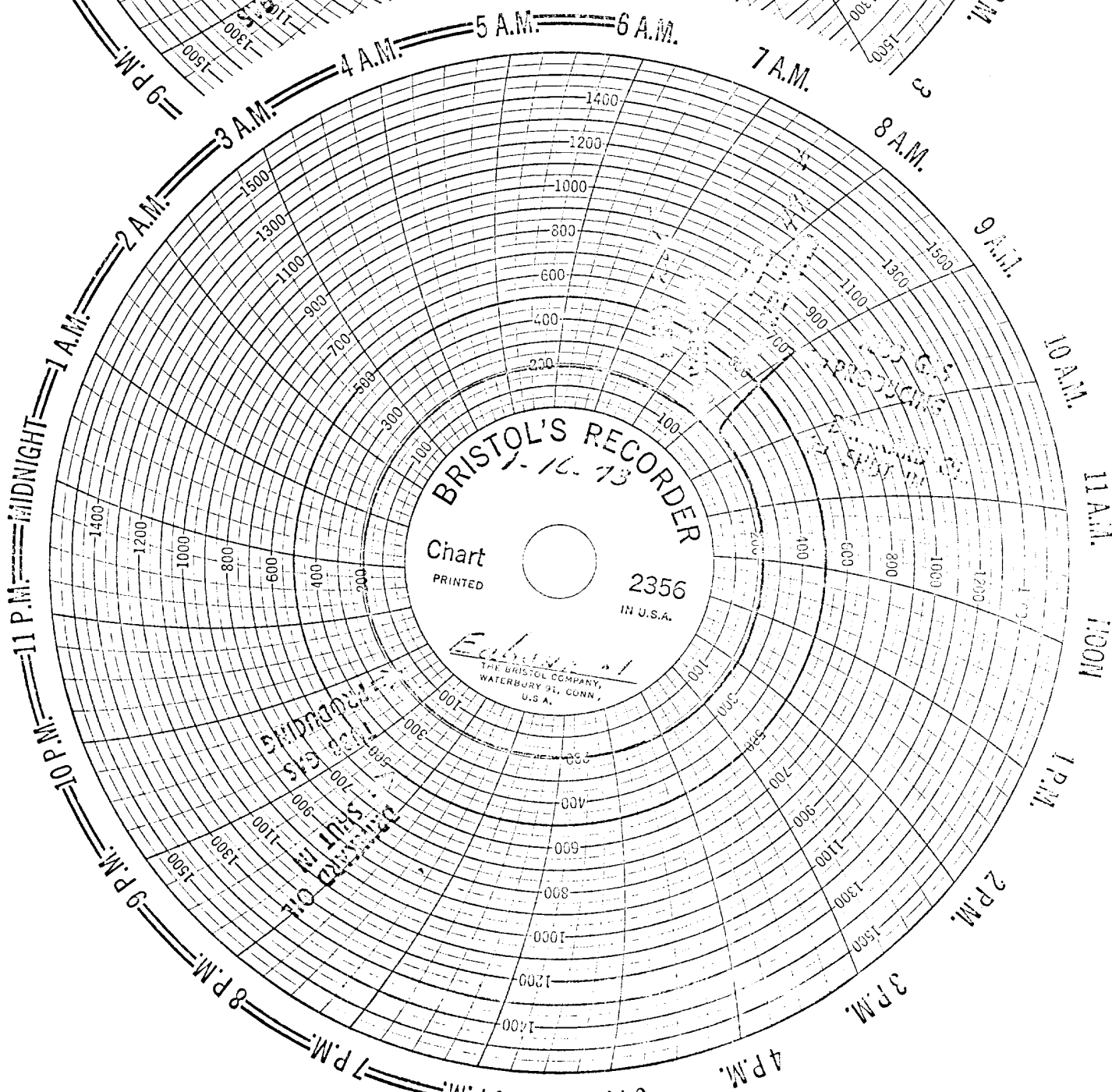
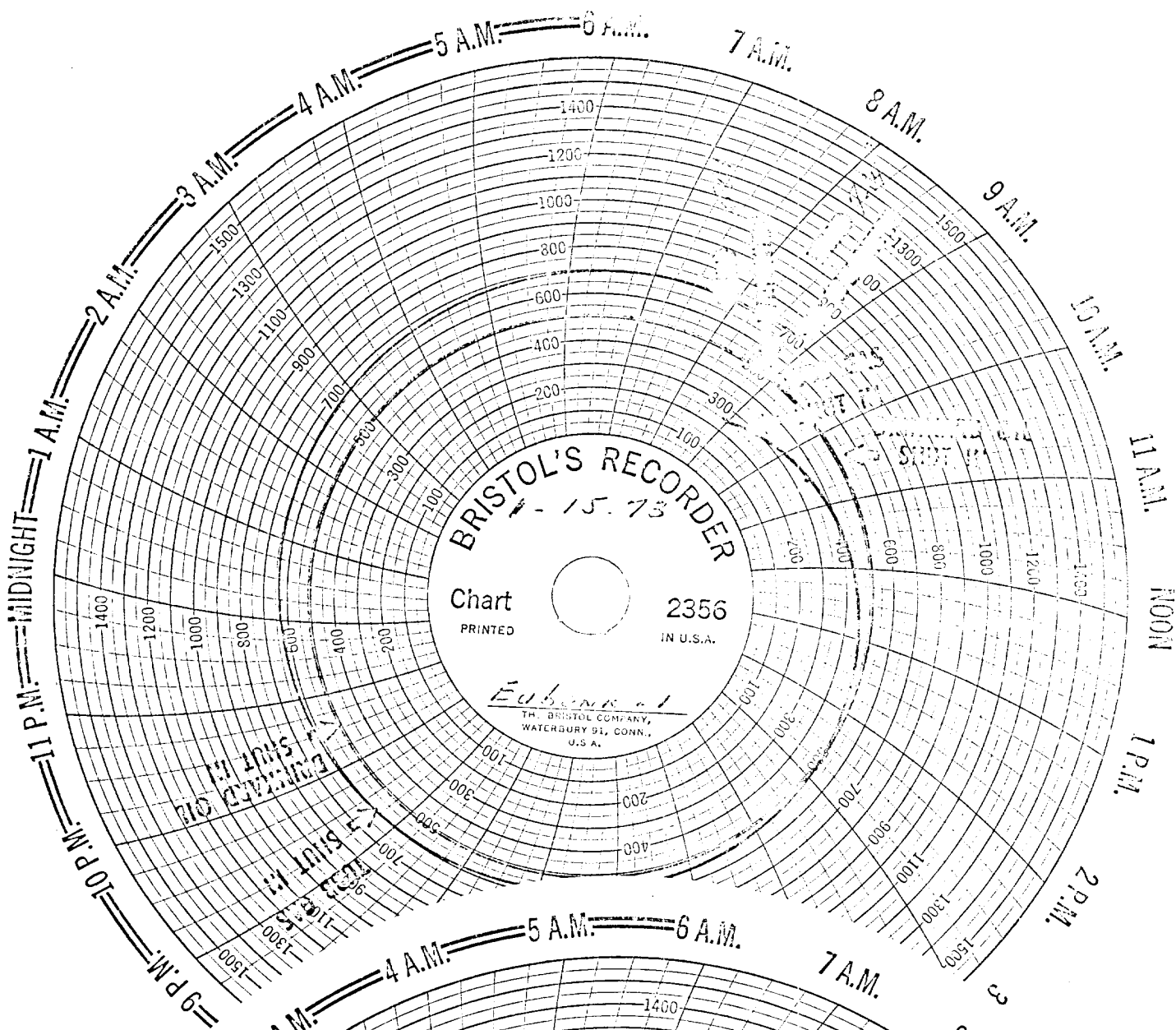
| | Upper Completion | Lower Completion |
|--|----------------------------------|------------------|
| Indicate by (X) the zone producing..... | | X |
| Pressure at beginning of test..... | 501 | 724 |
| Stabilized? (Yes or No)..... | Yes | Yes |
| Maximum pressure during test..... | 501 | 724 |
| Minimum pressure during test..... | 491 | 195 |
| Pressure at conclusion of test..... | 491 | 206 |
| Pressure change during test (Maximum minus Minimum)..... | -10 | -529 |
| Was pressure change an increase or a decrease?..... | decr. | decr. |
| Well closed at (hour, date): 8:45 A.M. 1-17-73 | Total Time On Production 24 hrs. | |
| Oil Production During Test: 0 bbls; Grav. - | Gas Production 265.0 MCF; GOR - | |
| Remarks * Drinkard Oil is standing. | | |

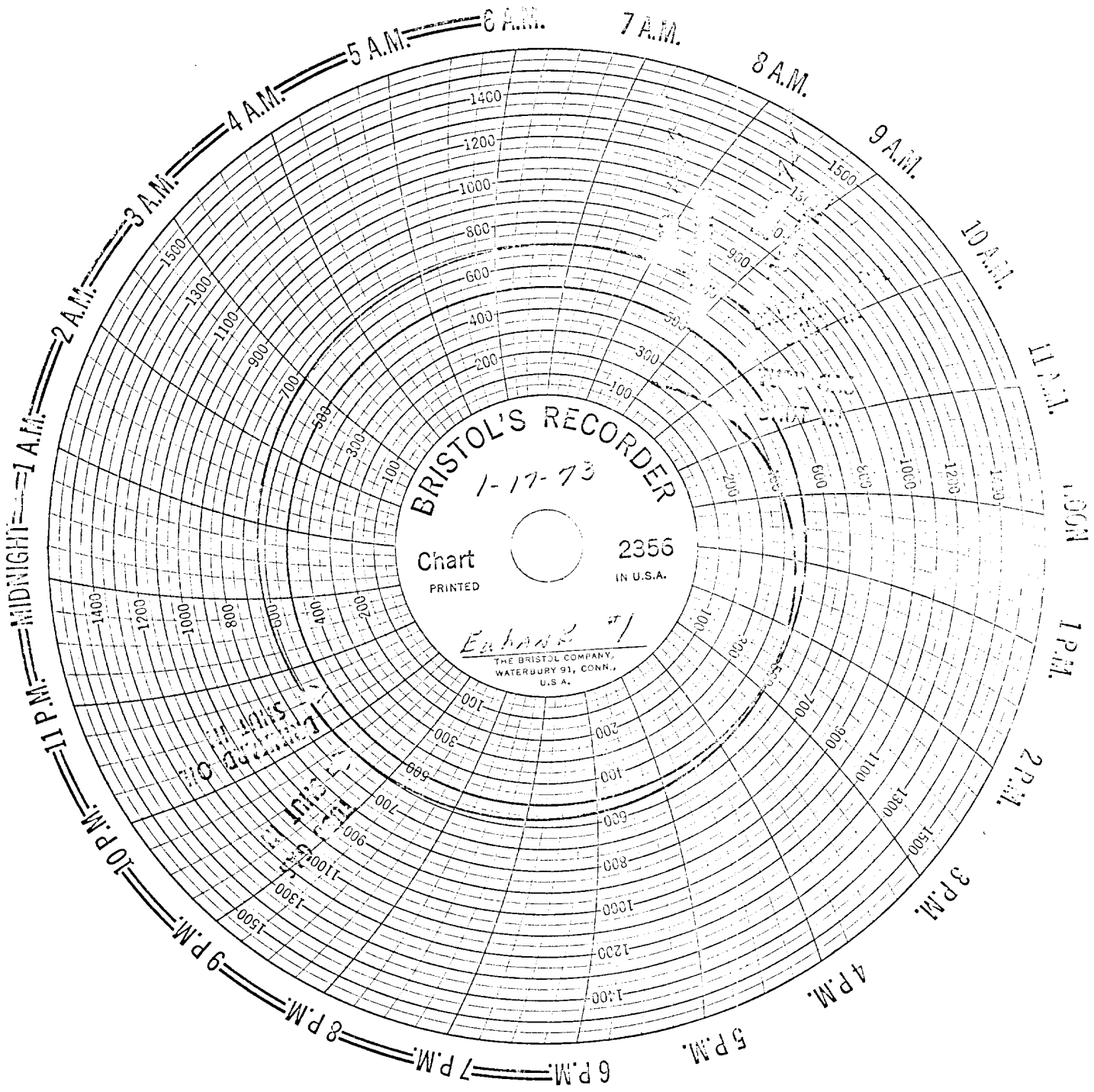
FLOW TEST NO. 2

| | Upper Completion | Lower Completion |
|--|-------------------------------------|------------------|
| Well opened at (hour, date): | | |
| Indicate by (X) the zone producing..... | | |
| Pressure at beginning of test..... | 490 | 726 |
| Stabilized? (Yes or No)..... | | |
| Maximum pressure during test..... | | |
| Minimum pressure during test..... | | |
| Pressure at conclusion of test..... | | |
| Pressure change during test (Maximum minus Minimum)..... | | |
| Was pressure change an increase or a decrease?..... | | |
| Well closed at (hour, date) | Total time on Production | |
| Oil Production During Test: bbls; Grav. ; | Gas Production During Test MCF; GOR | |
| Remarks | | |

I hereby certify that the information herein contained is true and complete to the best of my knowledge.

Approved 1970 Operator Gulf Oil Corporation
New Mexico Oil Conservation Commission By Original signed by Ray Iles
Orig. Signed by Well Tester
By Joe D. Ramey
Title Dist. I, Supv. Date January 22, 1973





BRISTOL'S RECORDER
1-17-73

Chart
PRINTED
2356
IN U.S.A.

Edwards
THE BRISTOL COMPANY,
WATERBURY 91, CONN.,
U.S.A.