

District I  
1625 N. French Dr., Hobbs, NM 88240

District II  
811 South First, Artesia, NM 88210

District III  
1000 Rio Brazos Rd., Aztec, NM 87410

District IV  
1220 South St. Francis Dr., Santa Fe, NM 87505

State of New Mexico  
Energy, Minerals & Natural Resources Department

**OIL CONSERVATION DIVISION**  
1220 South St. Francis Drive  
Santa Fe, NM 87505

Form C-101  
Revised March 17, 1999

Submit to appropriate District Office  
State Lease - 6 Copies  
Fee Lease - 5 Copies

☐ AMENDED REPORT

**APPLICATION FOR PERMIT TO DRILL, RE-ENTER, DEEPEN, PLUGBACK, OR ADD A ZONE**

<b>1 Operator Name and Address</b> Apache Corporation 2000 Post Oak Blvd. Ste. 100 Houston, Texas 77056-4400		<b>2 OGRID Number</b> 000873	
<b>3 API Number</b> 30-025-06753		<b>6 Well No.</b> 11	
<b>4 Property Code</b> 22800	<b>5 Property Name</b> Turner		

**7 Surface Location**

UL or lot no.	Section	Township	Range	Lot Idn	Feet from the	North/South Line	Feet from the	East/West Line	County
N	22	21S	37E		915	South	1650	West	Lea

**8 Proposed Bottom Hole Location If Different From Surface**

UL or lot no.	Section	Township	Range	Lot Idn	Feet from the	North/South Line	Feet from the	East/West Line	County
<b>9 Proposed Pool 1</b> Penrose Skelly; Grayburg					<b>10 Proposed Pool 2</b>				

<b>11 Work Type Code</b> P	<b>12 Well Type Code</b> O	<b>13 Cable/Rotary</b> R	<b>14 Lease Type Code</b> P	<b>15 Ground Level Elevation</b> 3409'
<b>16 Multiple</b> N	<b>17 Proposed Depth</b> 7783' (TD)	<b>18 Formation</b> Grayburg	<b>19 Contractor</b>	<b>20 Spud Date</b> ASAP

**21 Proposed Casing and Cement Program**

Hole Size	Casing Size	Casing weight/foot	Setting Depth	Sacks of Cement	Estimated TOC
17-1/2	13-3/8	32#	224	300	Surface
11	8-5/8	32#	2905	2000	Surface
7-7/8	5-1/2	15.5# / 17#	7559	500	4350 (Estimated)

22 Describe the proposed program. If this application is to DEEPEN or PLUG BACK give the data on the present productive zone and proposed new productive zone. Describe the blowout prevention program, if any. Use additional sheets if necessary.

Turner # 11 is currently a marginal producer in the Paddock pool.

Permit Expires 1 Year From Approval  
Date Unless Drilling Underway

*Plug-Back*

Apache proposes to plugback the wellbore by setting a CIBP @ 4500' w/ 35' cement cap and perforating the Grayburg from 3700' - 4000' (Estimated - Actual perforations to be determined by log).

Cement Bond Log will be run on the long string to determine actual top of cement and if necessary a cement squeeze behind the 5-1/2" casing will be performed.

<b>23 I hereby certify that the information given above is true and complete to the best of my knowledge and belief.</b>		<b>OIL CONSERVATION DIVISION</b>	
Signature: <i>Debra J. Anderson</i>		Approved by:	
Printed Name: Debra J. Anderson		Title:	
Title: Sr. Engineering Technician		Approval Date: <i>7/2/2001</i> Expiration Date:	
Date: 7/2/2001	Phone: 713-296-6338	Conditions of Approval: Attached <input type="checkbox"/>	

District I  
1625 N. French Drive, Hobbs, NM 88240

State of New Mexico  
Energy, Minerals and Natural Resources Department

Form C-102

Revised October 18, 1994

Instruction on Back

Submit to Appropriate District Office

State Lease - 4 Copies

Fee Lease - 3 Copies

District II  
P O Drawer DD, Artesia, NM 88210

**OIL CONSERVATION DIVISION**

2040 S. Pacheco

Santa Fe, New Mexico 87505

District III  
1000 Rio Brazos Rd., Aztec, NM 87410

☐ AMENDED REPORT

District IV  
2040 South Pacheco, Santa Fe, NM 87505

**WELL LOCATION AND ACREAGE DEDICATION PLAT**

<sup>1</sup> API Number 30-025-06753	<sup>2</sup> Pool Code 50350	<sup>3</sup> Pool Name Penrose Skelly; Grayburg
<sup>4</sup> Property Code 22800	<sup>5</sup> Property Name Turner	<sup>6</sup> Well Number 11
<sup>7</sup> GRID No. 000873	<sup>8</sup> Operator Name Apache Corporation	<sup>9</sup> Elevation 3409'

<sup>10</sup> Surface Location

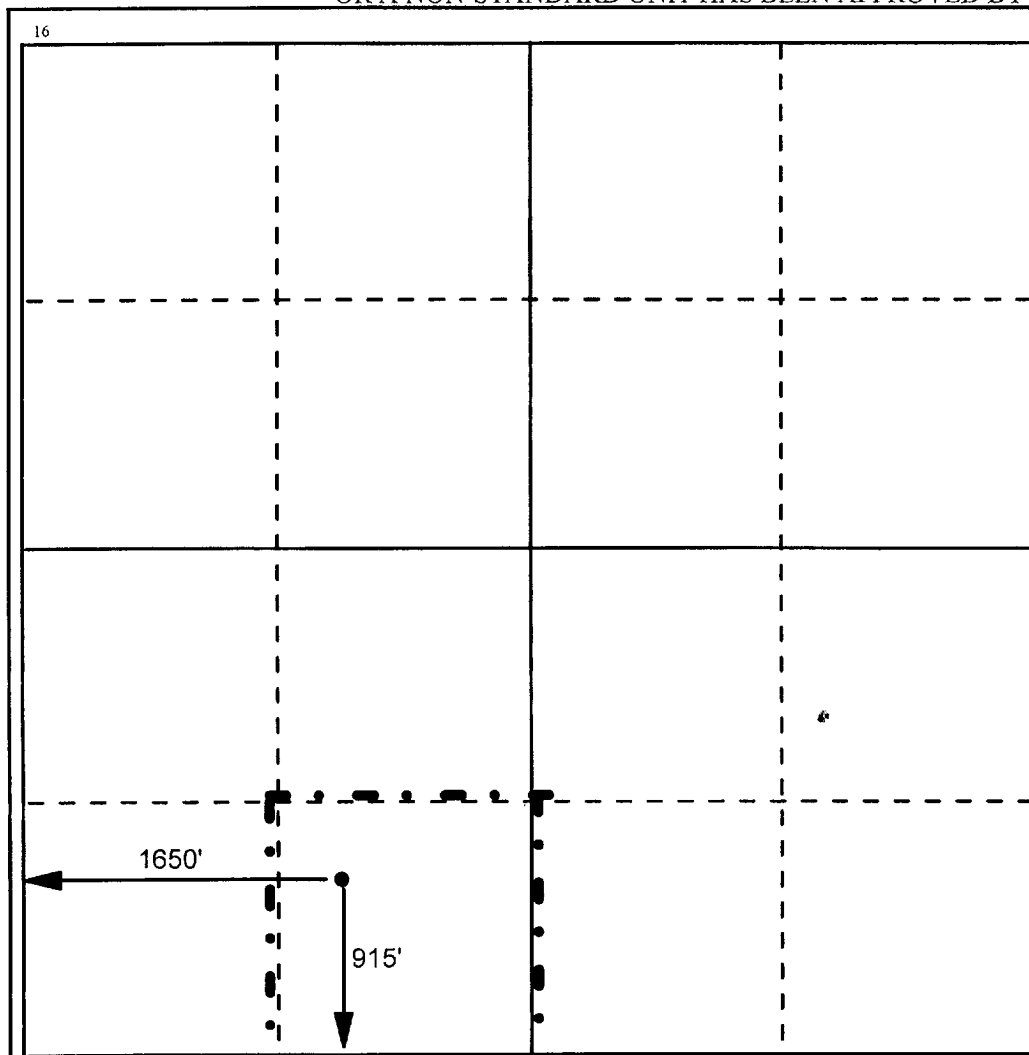
UL or Lot No. N	Section 22	Township 21S	Range 37E	Lot Idn	Feet from the 915	North/South line South	Feet from the 1650	East/West line West	County Lea
--------------------	---------------	-----------------	--------------	---------	----------------------	---------------------------	-----------------------	------------------------	---------------

<sup>11</sup> Bottom Hole Location If Different From Surface

UL or Lot No.	Section	Township	Range	Lot Idn	Feet from the	North/South line	Feet from the	East/West line	County
---------------	---------	----------	-------	---------	---------------	------------------	---------------	----------------	--------

<sup>12</sup> Dedicated Acres 40	<sup>13</sup> Joint or Infill	<sup>14</sup> Consolidation Code	<sup>14</sup> Order No.
-------------------------------------	-------------------------------	----------------------------------	-------------------------

NO ALLOWABLE WILL BE ASSIGNED TO THIS COMPLETION UNTIL ALL INTERESTS HAVE BEEN CONSOLIDATED  
OR A NON-STANDARD UNIT HAS BEEN APPROVED BY THE DIVISION



<sup>17</sup> OPERATOR CERTIFICATION

I hereby certify that the information contained herein is true and complete to the best of my knowledge and belief.

Signature

Printed Name

Debra J. Anderson

Title

Sr. Engineering Technician

Date

07/02/01

<sup>18</sup> SURVEYOR CERTIFICATION

I hereby certify that the well location shown on this plat was plotted from field notes of actual surveys made by me or under my supervision, and that the same is true and correct to the best of my belief.

Date Surveyed

Signature and Seal of Professional Surveyor

Certificate Number