

State of New Mexico
Energy, Minerals and Natural Resources

OIL CONSERVATION DIVISION

2040 South Pacheco
Santa Fe, NM 87505FORM C-103
Revised March 25, 1999

SUNDRY NOTICES AND REPORTS ON WELLS (DO NOT USE THIS FORM FOR PROPOSALS TO DRILL OR TO DEEPEN OR PLUG BACK TO A DIFFERENT RESERVOIR. USE "APPLICATION FOR PERMIT" (FORM C-101) FOR SUCH PROPOSALS.)		WELL API NO. 30-025-06766
1. Type of Well: <input type="checkbox"/> OIL WELL <input type="checkbox"/> GAS WELL <input checked="" type="checkbox"/> OTHER Injection		5. Indicate Type of Lease <input type="checkbox"/> STATE <input checked="" type="checkbox"/> FEE
2. Name of Operator Apache Corporation		6. State Oil & Gas Lease No.
3. Address of Operator 2000 Post Oak Blvd., Ste. 100, Houston, Texas 77056-4400		7. Lease Name or Unit Agreement Name Northeast Drinkard Unit
4. Well Location Unit Letter J : 1980 Feet From The South Line and 1980 Feet From The East Line Section 23 Township 21S Range 37E NMPM Lea County		8. Well No. 915 WFX-759
10. Elevation (Show whether DP, RKB, RT, GR, etc.) 3396' GR		9. Pool name or Wildcat Eunice N., Blinbry-Tubb-Drinkard

11.

Check Appropriate Box to Indicate Nature of Notice, Report, or Other Data

NOTICE OF INTENTION TO:

SUBSEQUENT REPORT OF:

- ☐ Perform Remedial Work ☐ Plug and Abandon
☐ Temporarily Abandon ☐ Change Plans
☐ Pull or Alter Casing
☐ Other

- ☐ Remedial Work ☐ Altering Casing
☐ Commence Drilling Operations ☐ Plug and Abandonment
☐ Casing Test and Cement Job
☒ Other **Convert to Injection**

12. Describe proposed or completed operations. (Clearly state all pertinent details, and give pertinent dates, including estimated date of starting any proposed work). SEE RULE 1103. For Multiple Completions: Attach wellbore diagram of proposed completion or recompletion.

- 7/10/00 MIRU. POH w/ pump & rods. Nipple down wellhead. Nipple up BOP. POH & laydown tubing.
- 7/11/00 RIH w/ bit, scraper & WS. Tag top of liner @ 6000'. Pull out of hole. RIH w/ cone mill & WS. Tag fill @ 6550', clean out to 6588'.
- 7/12/00 Finish clean out to 6700' (TD). Pull out of hole. RIH w/ RBP, packer & WS, test previous Blinbry squeezed perfs 5609' - 5649'. Set RBP @ 5670', pull packer up to 5659' & test RBP. Pull packer up to 5577' & set. Attempt to test previous squeeze to 500# - would not test. Load backside & test blank casing from 5577' to surface - OK. Release packer, latch RBP & POH.
- 7/13/00 RIH w/ CIBP & set @ 6090'. Load casing w/ 55 sx sand.
- 7/14/00 RIH w/ WS, tag sand @ 5671'. Pull out of hole. RIH w/ cement retainer & set @ 5577'. Re-squeeze perfs from 5609' - 5649' w/ 200 sx.

Continued on other side

I hereby certify that the information above is true and complete to the best of my knowledge and belief.

SIGNATURE

TITLE

Sr. Engineering Technician

DATE

8/25/00

TYPE OR PRINT NAME

Debra J. Anderson

TELEPHONE NO.

713-296-6338

(This space for State Use)

APPROVED BY

TITLE

DATE

CONDITIONS OF APPROVAL, IF ANY:

JCSA

Northeast Drinkard Unit # 915
API No. 30-025-06766
Convert to Injection
C-103 Sundry continued

7/17/00 RIH w/ bit, DC & WS. Tag cement @ 4820'. Drill out to 5373'.

7/18/00 Drill out to top of retainer @ 5577', drill on retainer. Reverse out pieces of bit. Circulate hole clean. POH w/ WS & bit. Inspected bit - had lost one cone. RIH w/ magnet - recovered most of lost cone.

7/19/00 RIH w/ cone buster mill & WS. Drill on bit cone & retainer - made 1'. Mill started plugging up. Pull out of hole. Found pieces of bit cone in mill ports. RIH w/ 4-3/4" bit & WS. Finish drilling out retainer @ 5577'. Drill out to 5620'.

7/20/00 Drill out cement from 5620' - 5652'. Test squeeze to 500#. Continue drilling out cement. Fell through cement @ 5666'. Continue drilling hard sand to 5682'.

7/21/00 Drill out hard sand from 5682' - 5744' - lost circulation. Pull out of hole. Establish circulation. Continue to drill hard sand to 5868' - quit making hole. Pull out of hole. Bit worn down. Change out bit.

7/24/00 RIH w/ new bit & WS. Clean out from 5868' - 6000'. Pull out of hole. RIH w/ 2-3/4" button mill & clean out from 6000' to CIBP @ 6090'. Drill out CIBP. Circulate hole clean.

7/25/00 POH w/ bit & WS. Rig up Wireline. Perforate Blinbry 5678' - 5720', 5743' - 5794', 5800' - 5808'.

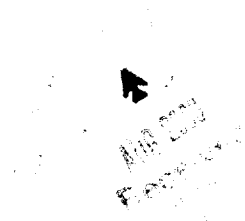
7/26/00 RIH w/ packer & WS, set packer @ 5921'. Acidize Blinbry perms 5962' - 6104' / Drinkard perms 6486' - 6629' and open hole 6650' - 6700' w/ 2000 gals 15% HCL. POH w/ packer & WS. RIH w/ RBP, packer & WS. Set RBP @ 5940' - test to 1000#. Pull up hole and set packer @ 5670'. Acidize Blinbry perms from 5678' - 5908' w/ 2000 gals 15% HCL.

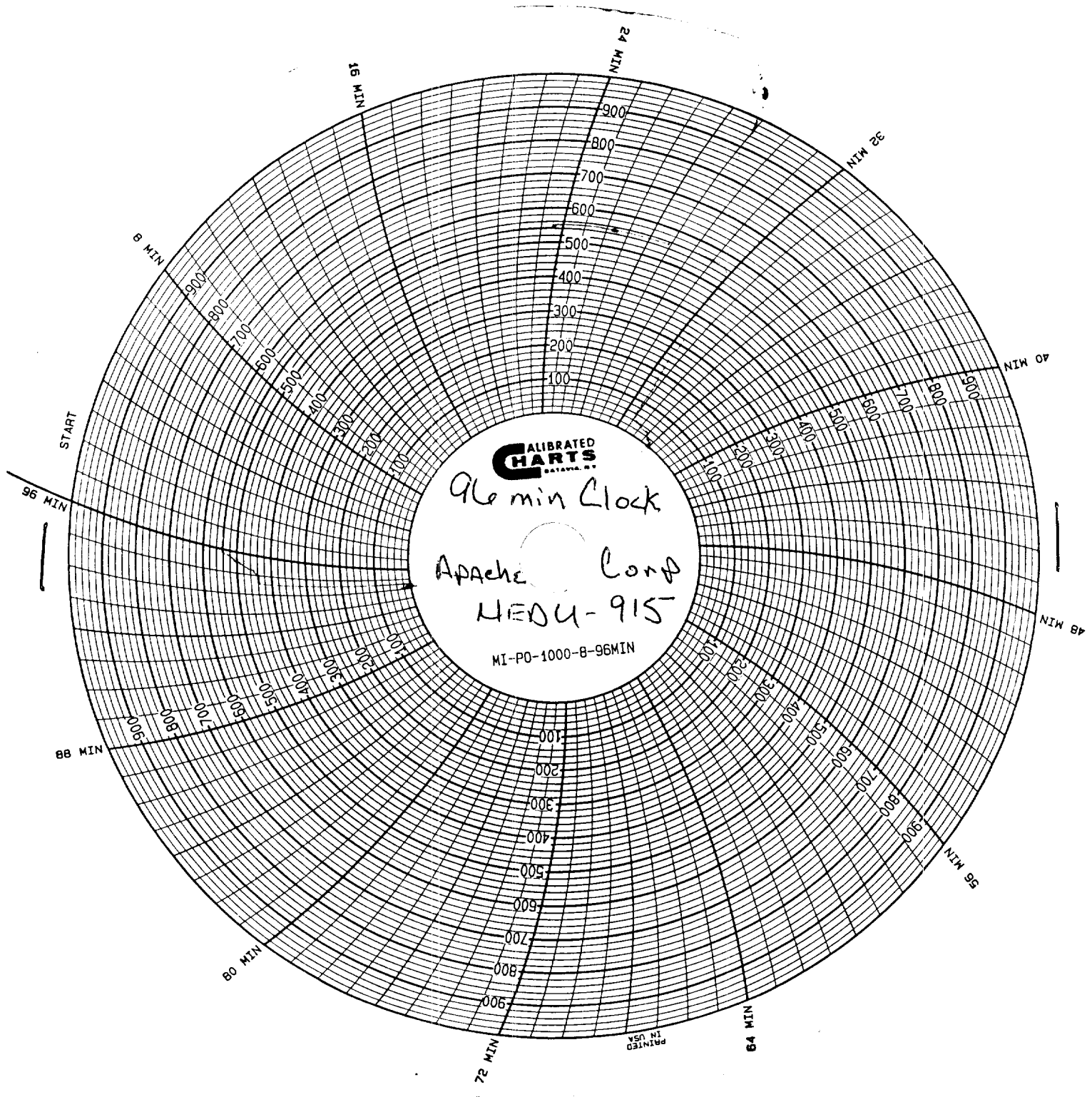
7/27/00 POH w/ WS. RIH w/ packer. Could not get packer to set. Pull out of hole.

7/28/00 RIH w/ injection packer & 2-3/8" poly lined tubing. Set packer @ 5594'. Load backside and pressure test casing to 500# for 30 mins - tested OK. (See attached). Nipple down BOP.

7/31/00 Prep to put on injection.

8/3/00 Hook well up to injection system. Put well on injection.





CALIBRATED
CHARTS
BATAVIA, N.Y.

96 min Clock

Apache Corp
MEDU-915

MI-PO-1000-8-96MIN

PRINTED
IN USA