

Submit to Appropriate
District Office
State Lease - 4 copies
Free Lease - 3 copies

State of New Mexico
Energy, Minerals and Natural Resources Department

Form C-102
Revised 1-1-89

OIL CONSERVATION DIVISION

P.O. Box 2088
Santa Fe, New Mexico 87504-2088

DISTRICT I
P.O. Box 1980, Hobbs, NM 88240

DISTRICT II
P.O. Drawer DD, Artesia, NM 88210

DISTRICT III
1000 Rio Brazos Rd., Aztec, NM 87410

WELL LOCATION AND ACREAGE DEDICATION PLAT

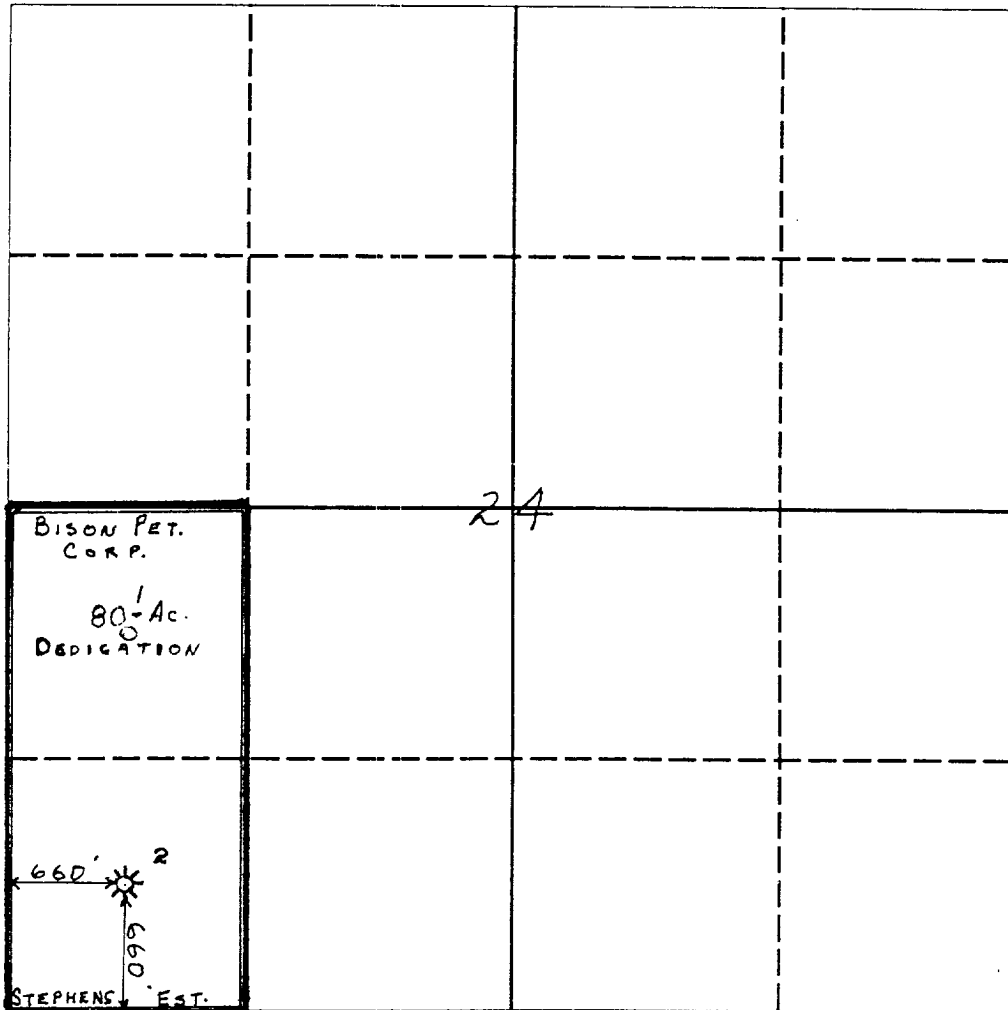
All Distances must be from the outer boundaries of the section

Operator Bison Petroleum Corporation			Lease Stephens Lease		Well No. 2
Unit Letter M	Section 24	Township 21-S	Range 37-E	County Lea County	

Actual Footage Location of Well:

660 feet from the	south	line and	660 feet from the	west	line
Ground level Elev.	Producing Formation	Pool	Dedicated Acreage:		
3414.8	Blinebry	Blinebry	80 Acres		

1. Outline the acreage dedicated to the subject well by colored pencil or hachure marks on the plat below.
2. If more than one lease is dedicated to the well, outline each and identify the ownership thereof (both as to working interest and royalty).
3. If more than one lease of different ownership is dedicated to the well, have the interest of all owners been consolidated by communitization, unitization, force-pooling, etc.?
☐ Yes ☐ No If answer is "yes" type of consolidation _____
If answer is "no" list the owners and tract descriptions which have actually been consolidated. (Use reverse side of this form if necessary). _____
No allowable will be assigned to the well until all interests have been consolidated (by communitization, unitization, forced-pooling, or otherwise) or until a non-standard unit, eliminating such interest, has been approved by the Division.



OPERATOR CERTIFICATION

I hereby certify that the information contained herein is true and complete to the best of my knowledge and belief.

Signature *Bruce O. Barthel*

Bruce O. Barthel

Printed Name

President

Position

Bison Petroleum Corporation

Company

8-31-89

Date

SURVEYOR CERTIFICATION

I hereby certify that the well location shown on this plat was plotted from field notes of actual surveys made by me or under my supervision, and that the same is true and correct to the best of my knowledge and belief.

Date Surveyed

Signature & Seal of
Professional Surveyor

Certificate No.

Submit to Appropriate
District Office
State Lease - 4 copies
Fee Lease - 3 copies

State of New Mexico
Energy, Minerals and Natural Resources Department

Form C-102
Revised 1-1-89

OIL CONSERVATION DIVISION

P.O. Box 2088
Santa Fe, New Mexico 87504-2088

DISTRICT I

P.O. Box 1980, Hobbs, NM 88240

DISTRICT II

P.O. Drawer DD, Artesia, NM 88210

DISTRICT III

1000 Rio Brazos Rd., Aztec, NM 87410

WELL LOCATION AND ACREAGE DEDICATION PLAT

All Distances must be from the outer boundaries of the section

Operator Bison Petroleum Corporation			Lease Stephens Estate		Well No. 2
Unit Letter M	Section 24	Township 21-S	Range 37-E	County Lea County	
Actual Footage Location of Well: 660 feet from the south line and 660 feet from the west line					
Ground level Elev. 3414.8	Producing Formation Drinkard		Pool Drinkard	Dedicated Acreage: 40 Acres	

1. Outline the acreage dedicated to the subject well by colored pencil or hachure marks on the plat below.

2. If more than one lease is dedicated to the well, outline each and identify the ownership thereof (both as to working interest and royalty).

3. If more than one lease of different ownership is dedicated to the well, have the interest of all owners been consolidated by communitization, unitization, force-pooling, etc.?

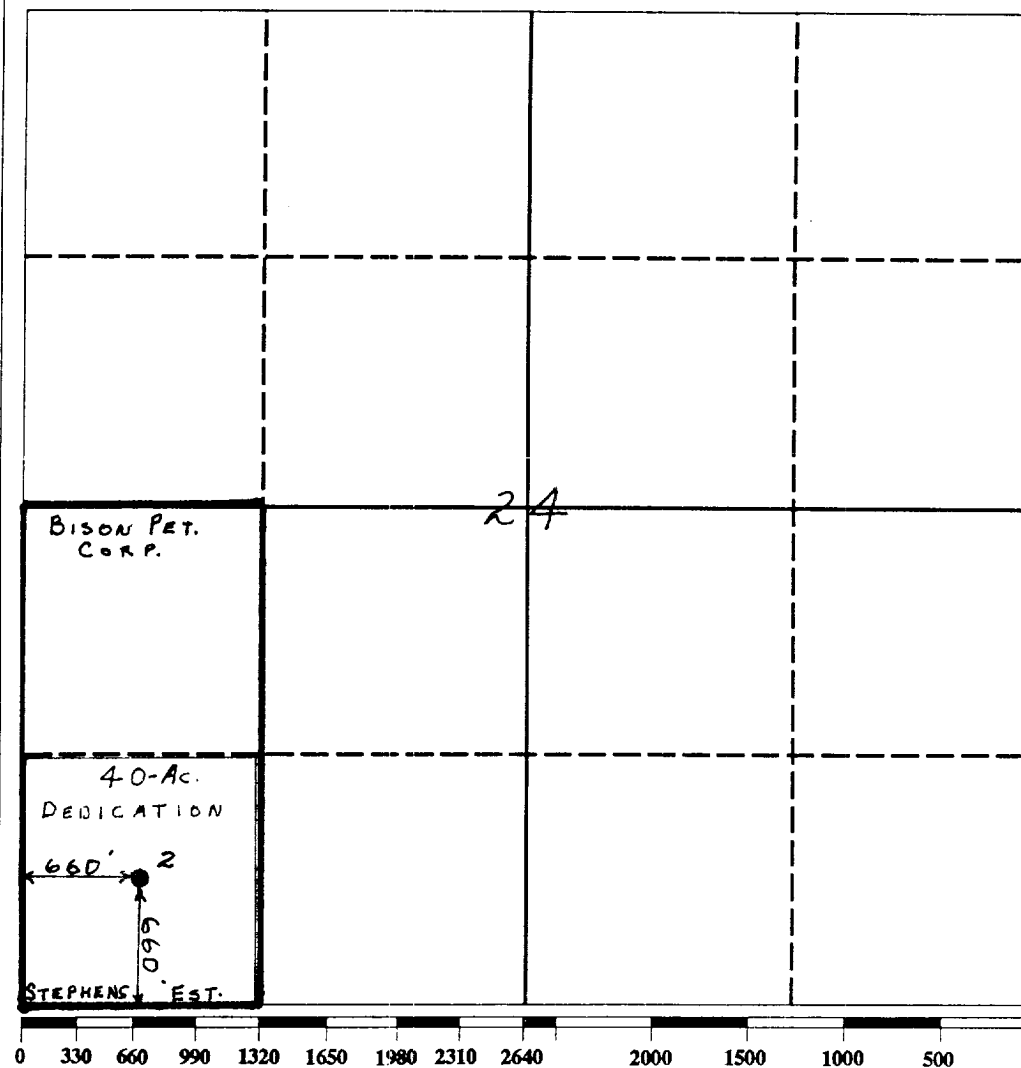
☐ Yes

☐ No

If answer is "yes" type of consolidation

If answer is "no" list the owners and tract descriptions which have actually been consolidated. (Use reverse side of this form if necessary.)

No allowable will be assigned to the well until all interests have been consolidated (by communitization, unitization, forced-pooling, or otherwise) or until a non-standard unit, eliminating such interest, has been approved by the Division.



OPERATOR CERTIFICATION

I hereby certify that the information contained herein is true and complete to the best of my knowledge and belief.

Signature

Bruce O. Barthel

Printed Name

President

Position

Bison Petroleum Corporation

Company

8-31-89

Date

SURVEYOR CERTIFICATION

I hereby certify that the well location shown on this plat was plotted from field notes of actual surveys made by me or under my supervision, and that the same is true and correct to the best of my knowledge and belief.

Date Surveyed

Signature & Seal of
Professional Surveyor

Certificate No.

SEP 1 1989

OCD
HUMAN RIGHTS OFFICE

Form C-10c
Revised 10-1-78

Operator Mobil Producing TX. & N.M. Inc.			Lease Stephens Estate			Well No. 2		
Unit Letter M	Section 24	Township 21-S		Range 37-E	County Lea			
Actual Footage Location of Well:								
660 feet from the south line and			660 feet from the west line					
Ground Level Elev. NA	Producing Formation Blinebry		Pool Blinebry-Gas			Dedicated Acreage: 80 Acres		
<p>1. Outline the acreage dedicated to the subject well by colored pencil or hachure marks on the plat below.</p> <p>2. If more than one lease is dedicated to the well, outline each and identify the ownership thereof (both as to working interest and royalty).</p> <p>3. If more than one lease of different ownership is dedicated to the well, have the interests of all owners been consolidated by communitization, unitization, force-pooling, etc?</p> <p><input type="checkbox"/> Yes <input type="checkbox"/> No If answer is "yes," type of consolidation _____</p> <p>If answer is "no," list the owners and tract descriptions which have actually been consolidated. (Use reverse side of this form if necessary.) _____</p> <p>No allowable will be assigned to the well until all interests have been consolidated (by communitization, unitization, forced-pooling, or otherwise) or until a non-standard unit, eliminating such interests, has been approved by the Division.</p>								
						CERTIFICATION		
						<p>I hereby certify that the information contained herein is true and complete to the best of my knowledge and belief.</p> <p><i>M. E. Sweeney</i></p> <p>Name M. E. Sweeney</p> <p>Position Environmental & Regulatory Mgr</p> <p>Company Mobil Producing TX. & N.M. Inc.</p> <p>Date November 20, 1986</p>		
						<p>I hereby certify that the well location shown on this plat was plotted from field notes of actual surveys made by me or under my supervision, and that the same is true and correct to the best of my knowledge and belief.</p> <p>March 27, 1958</p>		
						<p>Date Surveyed L. P.</p> <p>Registered Professional Engineer and/or Land Surveyor</p> <p>(Mobil Civil Engineer)</p> <p>Certificate No. Unknown</p>		

All distances must be from the outer boundaries of the Section.

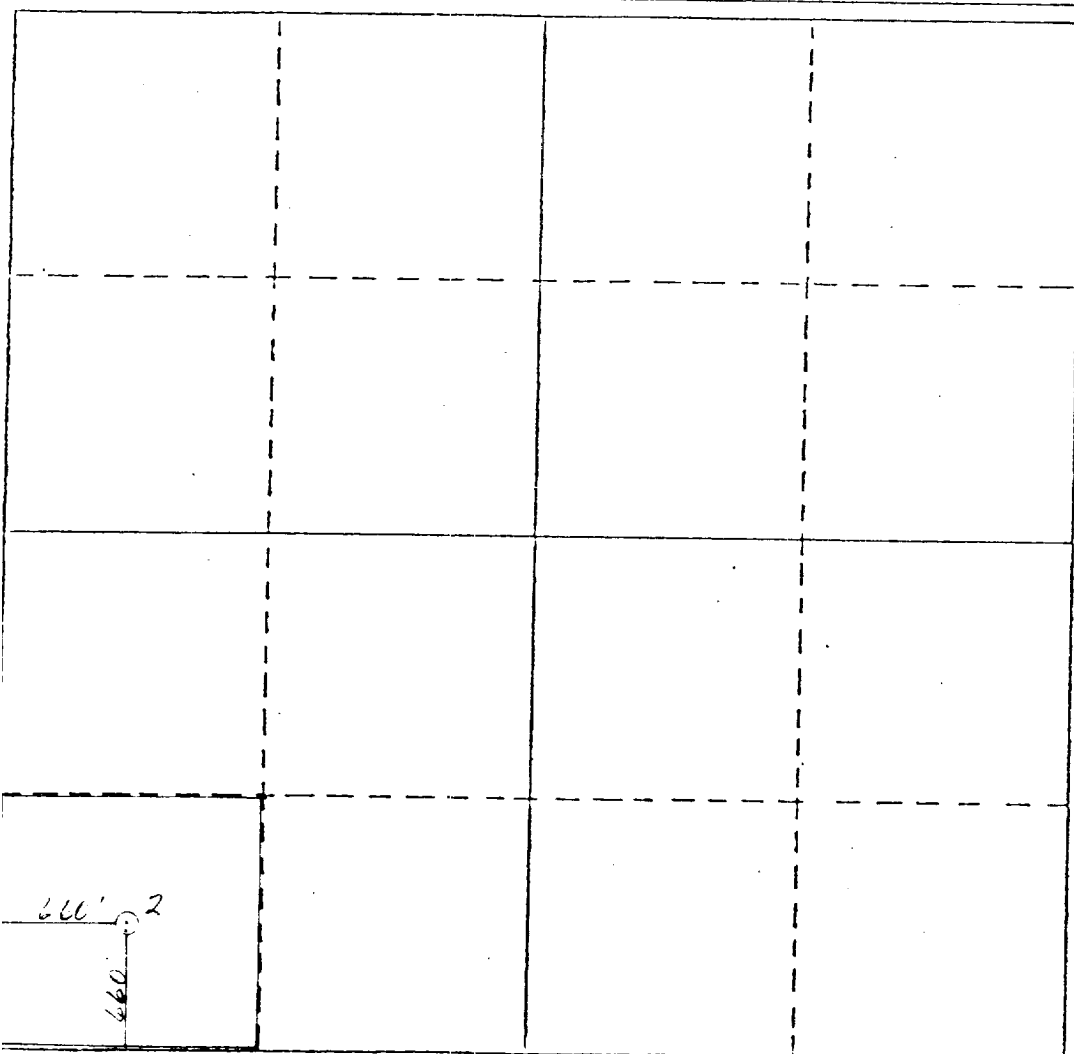
Operator Mobil Producing Tx. & N. M., Inc.		Lease Stephens Estate		Well No. 2
Unit Letter M	Section 24	Township 21-S	Range 37-E	County Lea
Actual Footage Location of Well: 660 feet from the south line and 660 feet from the west line				
Ground Level Elev. NA	Producing Formation Blinebry	Pool Blinebry Oil & Gas		Dedicated Acreage: 40 Acres

1. Outline the acreage dedicated to the subject well by colored pencil or hatchure marks on the plat below.
2. If more than one lease is dedicated to the well, outline each and identify the ownership thereof (both as to working interest and royalty).
3. If more than one lease of different ownership is dedicated to the well, have the interests of all owners been consolidated by communitization, unitization, force-pooling, etc?

☐ Yes ☐ No If answer is "yes," type of consolidation _____

If answer is "no," list the owners and tract descriptions which have actually been consolidated. (Use reverse side of this form if necessary.) _____

No allowable will be assigned to the well until all interests have been consolidated (by communitization, unitization, forced-pooling, or otherwise) or until a non-standard unit, eliminating such interests, has been approved by the Division.



CERTIFICATION

I hereby certify that the information contained herein is true and complete to the best of my knowledge and belief.

G. E. Tate
Name

G. E. Tate

Position

Env. & Reg. Mgr.

Company

Mobil Producing Tx. & N.M., Inc

Date

11-15-85

I hereby certify that the well location shown on this plat was plotted from field notes of actual surveys made by me or under my supervision, and that the same is true and correct to the best of my knowledge and belief.

3-27-58

Date Surveyed

L. P. (Mobil Civil Eng.)

Registered Professional Engineer
and/or Land Surveyor

Certificate No.

330 660 990 1320 1650 1980 2310 2640 2970 3300 3630 3960 4290 4620 4950 5280 5610 5940 6270 6600

RECEIVED

NOV 19 1985

3.00
HOBBS OFFICE

COUNTY	LEA	FIELD	Terry-Blinebry/	STATE	NM	UWWO
OPR	SOCONY MOBIL OIL CO., INC.		/Drinkard	MAP		
2 Stephens Estate						
Sec. 24, T-21-S, R-37-E						
660' Fr S & W Lines of Sec.						
Re-Spd 10-5-65						
Re-Cmp 10-17-65						
		FORMATION	DATUM	FORMATION	EL DATUM	
CSG & SX - TUBING						
13 3/8" 352' 375						
9 5/8" 3160' 1760						
7" lnr 2893-6700' 940						
5" lnr 6530-7245' 90						
LOGS EL GR RA IND HC A						
TD 7245', PBD 6900'						

Blinebry Perfs 5681-5774' - NO CHANGE

IP Drinkard Perfs 6493-6598' Flwd 288 BOPD. Pot. Based on 6 hr test of 72 BO thru 24/64" chk., TP 225#, CP Pkr, Gravity 36.3, GOR 737.

Distribution limited and publication prohibited by subscribers' agreement.
Reproduction rights reserved by Williams & Lee Scouting Service, Inc.

CONT.	PROP DEPTH	TYPE WO
DATE		

12-6-65 F.R.C. 12-9-65; OWWO
(Orig. comp from Blinebry perfs 5681-5774' on 7-26-58, OTD 7245')
TD 7245', PBD 6900', COMPLETED.
Perf (Drinkard) @ 6493', 6498', 6504', 6508', 6511', 6515', 6518', 6520', 6522', 6527', 6529', 6535', 6539', 6547', 6549', 6551', 6555', 6559', 6571', 6574', 6582', 6587', 6591', 6598' W/1 SPI
Ac. 3000 gals.
Frac 30,000 gals oil + 30,000# sd. (6493-6598')
Ac. 500 gals. (5681-5774')

NEW YORK STATE DEPARTMENT OF ENVIRONMENTAL CONSERVATION
WATER CONTROL DIVISION
WELL LOCATION AND DEDICATION PLAT

W-1-1-1
Supersedes W-1-1-1
Effective 1-1-73

All wells are subject to the provisions of the Section.

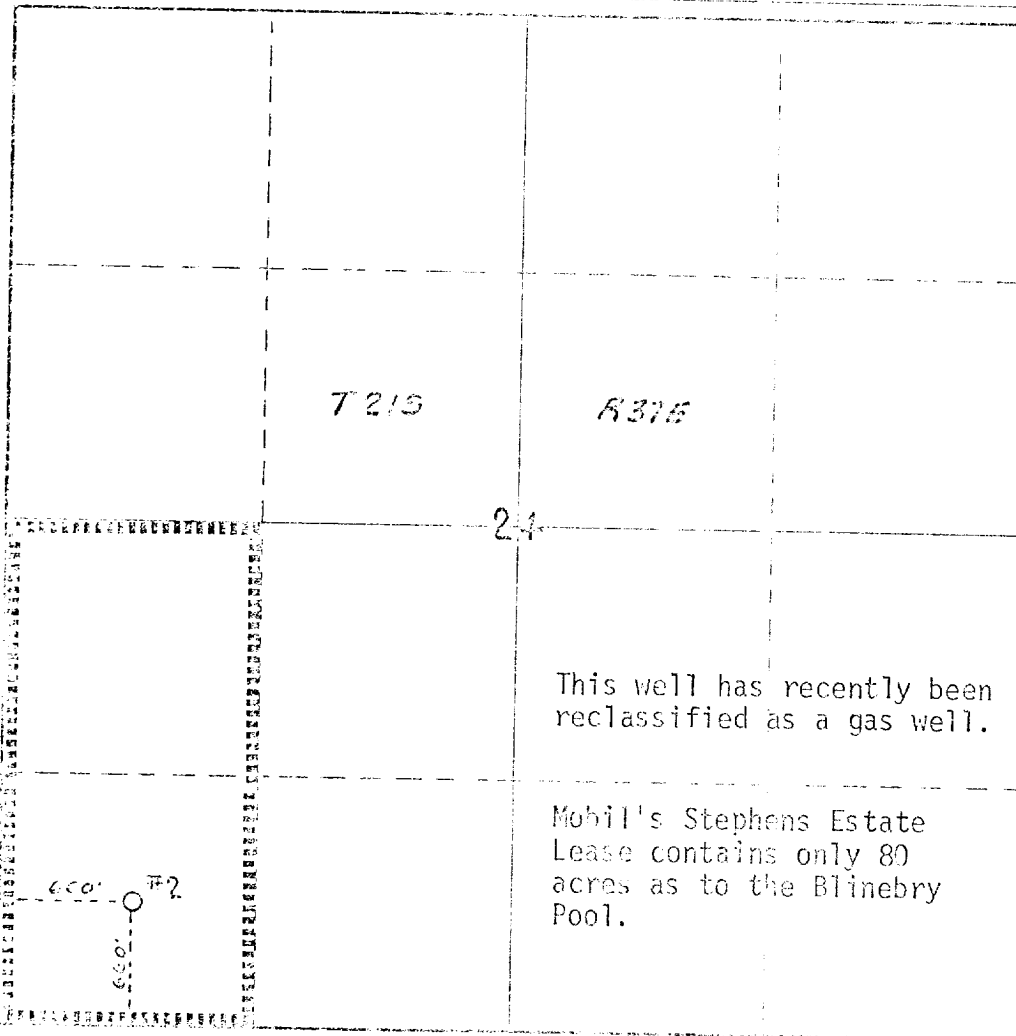
Mobil Oil Corporation			Stephens Estate		Well No. 2
11	24	21-S	37-E	County	Lea
660			660		Line
South			West		
Blinebry			Blinebry Gas		Indicated Acreage 80

1. Outline the acreage dedicated to the subject well by colored pencil or hatchure marks on the plat below.
2. If more than one lease is dedicated to the well, outline each and identify the ownership thereof (both as to working interest and royalty).
3. If more than one lease of different ownership is dedicated to the well, have the interests of all owners been consolidated by communitization, unitization, force-pooling, etc?

☐ Yes ☐ No If answer is "yes," type of consolidation _____

If answer is "no," list the owners and tract descriptions which have actually been consolidated. (Use reverse side of this form if necessary.) _____

No allowable will be assigned to the well until all interests have been consolidated (by communitization, unitization, force-pooling, or otherwise) or until a non-standard unit, eliminating such interests, has been approved by the Commission.



CERTIFICATION

I hereby certify that the information contained herein is true and complete to the best of my knowledge and belief.

A. D. Bond

Name
A. D. Bond
Position
Proration Staff Assistant
Company
Mobil Oil Corporation

Date
August 10, 1973

I hereby certify that the well location shown on this plat was plotted from field notes of actual surveys made by me or under my supervision, and that the same is true and correct to the best of my knowledge and belief.

Date Surveyed

Registered Professional Engineer and/or Land Surveyor

Signature