

(Corrected)

(Form C-101)
(Revised 7/1/52)

NEW MEXICO OIL CONSERVATION COMMISSION

Santa Fe, New Mexico

NOTICE OF INTENTION TO DRILL OR RECOMPLETE

Notice must be given to the District Office of the Oil Conservation Commission and approval obtained before drilling or recompletion begins. If changes in the proposed plan are considered advisable, a copy of this notice showing such changes will be returned to the sender. Submit this notice in QUINTUPPLICATE. One copy will be returned following approval. See additional instructions in Rules and Regulations of the Commission.

317 West Texas St., Midland, Texas
(Place)

July 12, 1954
(Date)

OIL CONSERVATION COMMISSION
SANTA FE, NEW MEXICO

Gentlemen:

You are hereby notified that it is our intention to commence the (Drilling) (~~Recompletion~~) of a well to be known as

Hanley Company

(Company or Operator)

C. A. Summerlin

(Lease)

Well No. 1

N

(Unit)

located 330 feet from the South line and 1650 feet from the

West

line of Section 8

T. 20-S

R. 39 E

NMPM.

(GIVE LOCATION FROM SECTION LINE)

Undesignated

Pool, Lea

County

If State Land the Oil and Gas Lease is No.

If patented land the owner is C. A. Summerlin

Address Unknown

We propose to drill well with drilling equipment as follows: Rotary Tools to

total depth

The status of plugging bond is Bond No. 1006211 Approved 7-8-54, by the Oil Conservation Commission, Santa Fe, New Mexico.

Drilling Contractor Central Drilling Company-Midland, Texas

We intend to complete this well in the San Andres Formation

formation at an approximate depth of 4400 feet.

CASING PROGRAM

We propose to use the following strings of Casing and to cement them as indicated:

Size of Hole	Size of Casing	Weight per Foot	New or Second Hand	Depth	Sacks Cement
12 7/8"	8 5/8"	24* or 28*	New	240' Torr -	110 / 4% Gel. *
7 7/8"	5 1/2"	14* or 15.5*	New	4400' / or -	100 / 4% Gel. **

If changes in the above plans become advisable we will notify you immediately.

ADDITIONAL INFORMATION (If recompletion give full details of proposed plan of work.)

* Or Sufficient to Circulate

** Or Sufficient to cover salt section

In event that well is non productive, a cement plug (as approved by Commission) will be set below and above salt section to isolate it.

Approved _____, 19____
Except as follows:

Sincerely yours,

Hanley Company

(Company or Operator)

By: H.D. Murray

Position: Prod. Supt.

Send Communications regarding well to

Name: Hanley Company

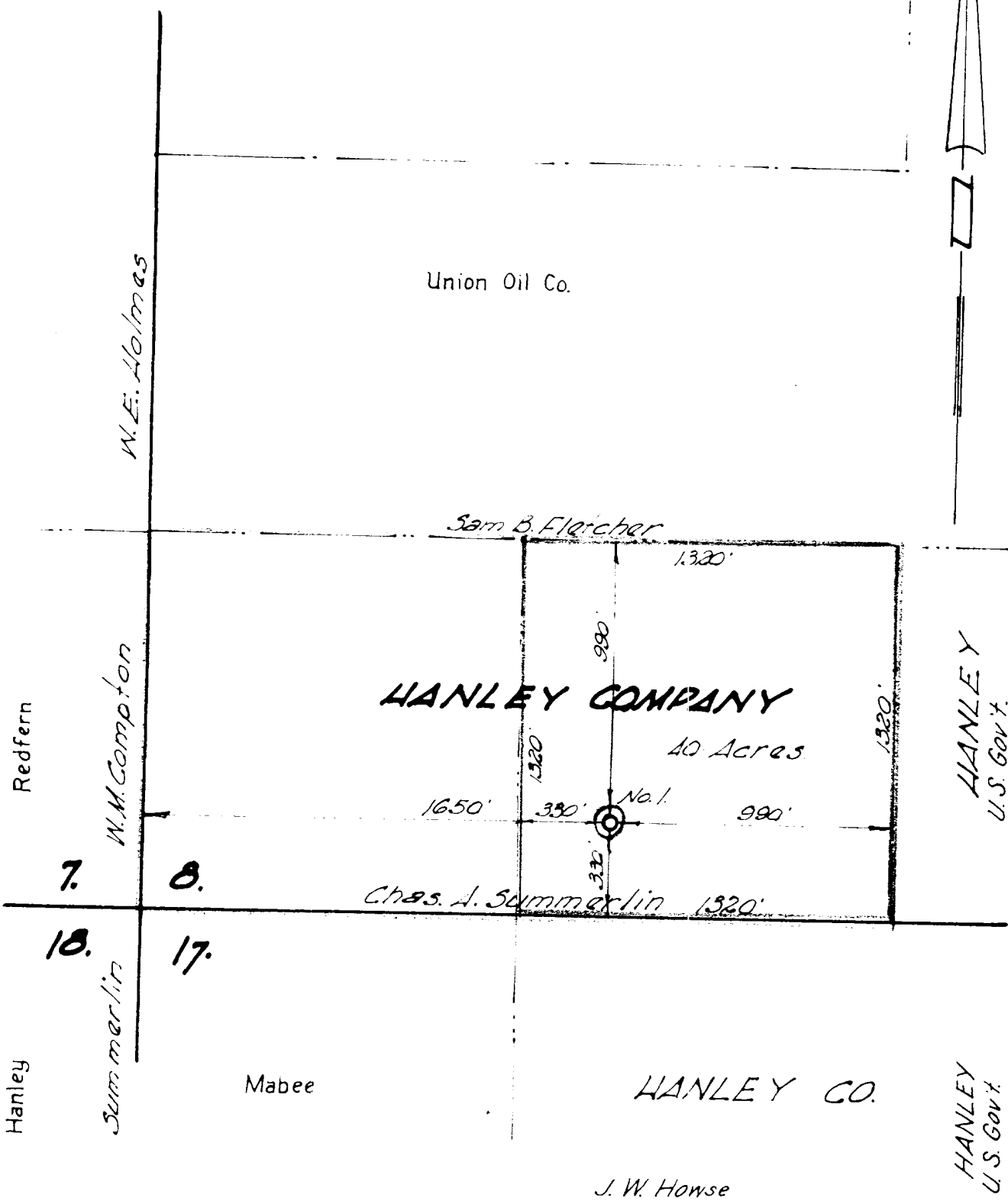
Address: 317 West Texas St.

Midland, Texas

OIL CONSERVATION COMMISSION

By: J.G. Stanley

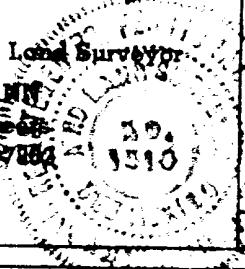
Title:



I, Max Schumann, Jr., Registered Professional and Licensed State Land Surveyor, State of New Mexico, hereby certify that this survey was made by me on the ground, and that this plat is a correct representation thereof.

This 7th day of July 1954
Max A. Schumann, Jr.

Max A. Schumann, Jr.
Reg. Prof. Engr. and Licensed State Land Surveyor
JENKINS & SCHUMANN
Registered Civil Engineers
Box 504 Phone 47884
Midland, Texas



SURVEY PLAT	
HANLEY COMPANY	
WELL NO. 1 CHAS. A. SUMMERLIN LEASE	
1650 ft. from WEST & 330 ft. from SOUTH Section 8, T 20 S, R 39 E,	
LEA COUNTY, NEW MEXICO	
Scale: 1" = 500'	JOB NO. 1182