

OWWO

COUNTY LEA FIELD Oil Center STATE NM MN 20175

OPR GULF OIL CORP. MAP

8 Heasley - State

Sec 5, T-21-S, R-36-E CO-ORD

600' FNL, 500' FEL of Sec

		CLASS		EL <u>35532</u>	
Re-Cmp 5-17-71		FORMATION	DATUM	FORMATION	DATUM
LOGS & SX - TUBING					
8 5/8" at 1195' w/465 sx					
4 1/2" at 6025' w/597 sx					
LOGS EL GR RA IND HC A					
		TD 6025'; PBD 5871'			

(Blinebry) Perfs 5858-68' NO NEW POTENTIAL.

Distribution limited and publication prohibited by subscribers' agreement.  
Reproduction rights reserved by Williams & Lee Seouting Service, Inc.

CONT. DATE PROP DEPTH 5868' TYPE WO

6-1-71 F.R. 6-3-71; Opr's Elev. 3545' GL  
PD 5868' WO (Blinebry)  
(Orig. comp 5-6-63 thru (Blinebry) Perfs 5835-  
5907', OTD 6025', OPB 5994')  
TD 6025'; PBD 5871'; COMPLETE  
PB to 5871'  
Perf 5858-68' w/2 SPF  
Acid (5858-68') 1000 gals  
Ppd 19 BO + 30 BW in 24 hrs (5858-68')

6-3-71 COMPLETION REPORTED

NEW MEXICO OIL CONSERVATION COMMISSION  
WELL LOCATION AND ACREAGE DEDICATION PLAT

Form C-102  
Supersedes C-128  
Effective 1-1-85

All distances must be from the outer boundaries of the Section

Operator <b>CHEVRON U S A , INC.</b>			Lease <b>HEASLAY STATE</b>		Well No. <b>8</b>
Unit Letter <b>A</b>	Section <b>5</b>	Township <b>21 SOUTH</b>	Range <b>36 EAST</b>	County <b>LEA</b>	

Actual Footage Location of Well:

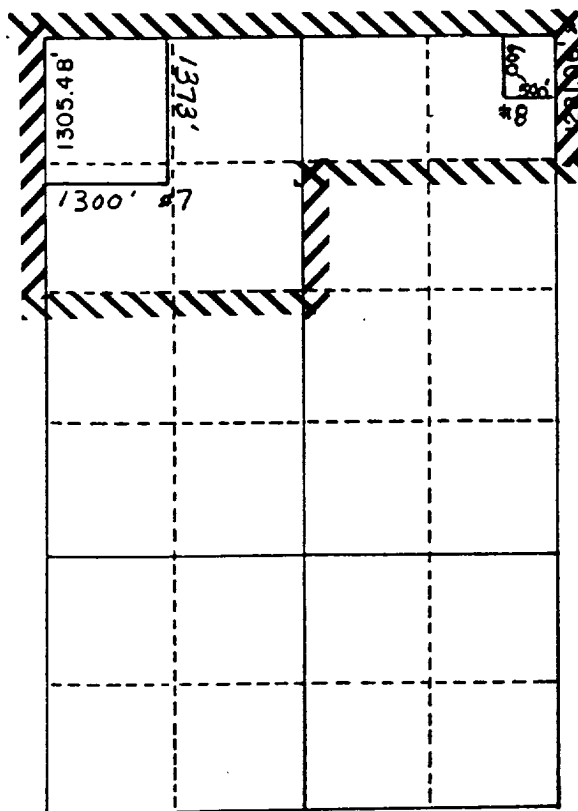
<b>500</b>	feet from the	<b>EAST</b>	line and	<b>600</b>	feet from the	<b>NORTH</b>	line	
Ground Level Elev.	Producing Formation <b>Y-SR-Q</b>		Pool <b>EUMONT GAS</b>		Dedicated Acreage: <b>236.7</b>			Acres

1. Outline the acreage dedicated to the subject well by colored pencil or hatchure marks on the plat below.
2. If more than one lease is dedicated to the well, outline each and identify the ownership thereof (both as to working interest and royalty).
3. If more than one lease of different ownership is dedicated to the well, have the interests of all owners been consolidated by communitization, unitization, force-pooling, etc?

☐ Yes ☐ No If answer is "yes," type of consolidation \_\_\_\_\_

If answer is "no," list the owners and tract descriptions which have actually been consolidated. (Use reverse side of this form if necessary.) \_\_\_\_\_

No allowable will be assigned to the well until all interests have been consolidated (by communitization, unitization, forced-pooling, or otherwise) or until a non-standard unit, eliminating such interests, has been approved by the Commission.



CERTIFICATION

I hereby certify that the information contained herein is true and complete to the best of my knowledge and belief.

Name  
**E. O. Doherty**  
Position  
**T. A. Delg**  
Company  
**CHEVRON USA, INC**  
Date  
**5/7/91**

I hereby certify that the well location shown on this plat was plotted from field notes of actual surveys made by me or under my supervision, and that the same is true and correct to the best of my knowledge and belief.



Date Surveyed  
**12-28-90**  
Registered Professional Engineer  
and Land Surveyor

Certificate No. **JOHN W. WEST 676**

**Ronald J. Eldson 3239**

**R-451 236.76 ac NSP Eumont**