

NUMBER OF COPIES RECEIVED	
DISTRIBUTION	
SANTA FE	
FILE	
USGS	
LAND OFFICE	
TRANSPORTER	OIL
	GAS
PRODUCTION OFFICE	
OPERATOR	

NEW MEXICO OIL CONSERVATION MISSION

WELL LOCATION AND ACREAGE DEDICATION PLAT

SEE INSTRUCTIONS FOR COMPLETING THIS FORM ON THE REVERSE SIDE

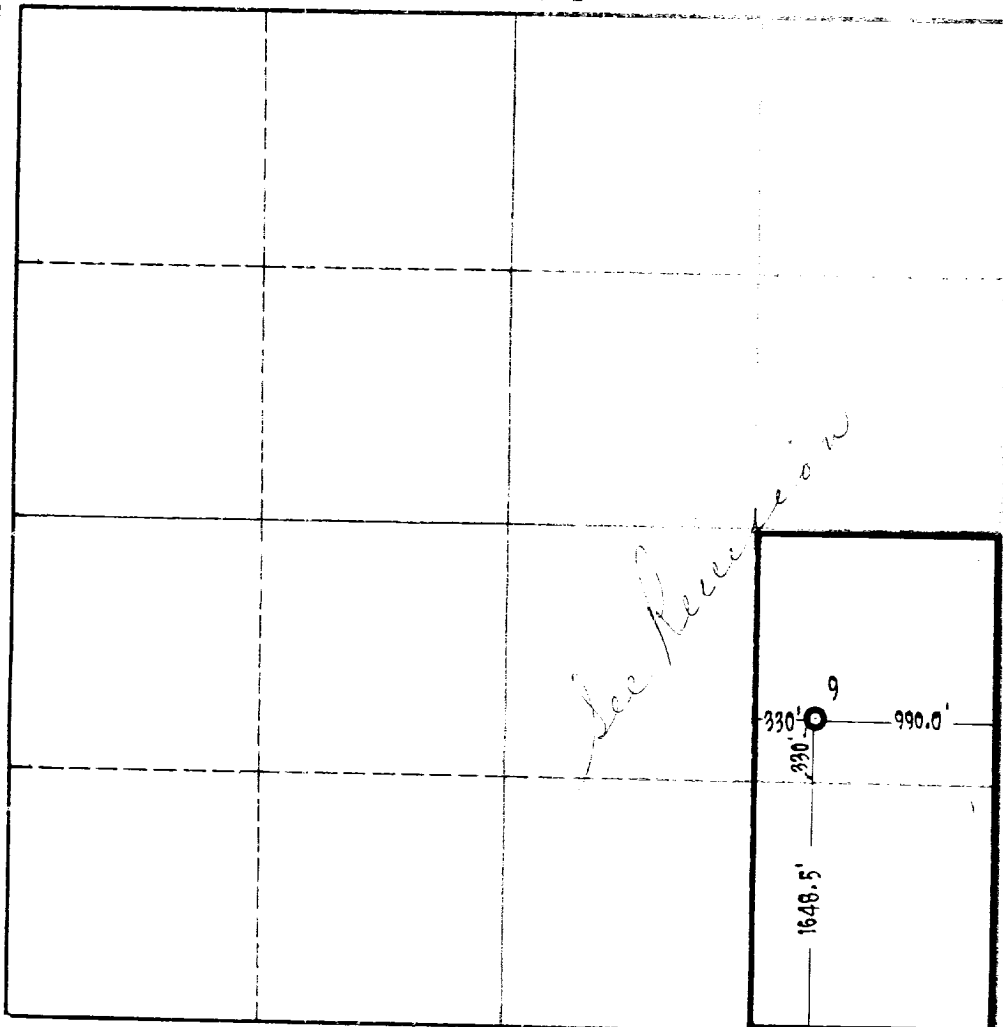
FORM C-128
Revised 5/1/57

Operator Sun Oil Company		Lease J. A. Akens		Well No. 9
Unit Letter 1	Section 3	Township 21-S	Range 36-E	County Lee
Actual Footage Location of Well: 1648.5 feet from the South line and 990 feet from the East line				
Ground Level Elev. 3541	Producing Formation Blinbry	Pool Oil Center - Blinbry	Dedicated Acreage 80 Acres	

1. Is the Operator the only owner in the dedicated acreage? **YES** ☒ **NO** ☐ "Other" means the person who has the right to drill into and to produce from the land in question, whether production enters or leaves the land or not. (65-3-29 (e) NMSA 1935 Comp.)
2. If the answer to question one is "no," have the interests of all the owners been consolidated by a consolidation agreement or otherwise? **YES** ☐ **NO** ☐ If answer is "yes," Type of Consolidation _____
3. If the answer to question two is "no," list all the owners and their respective interests below:

Owner	and Description

SECTION B



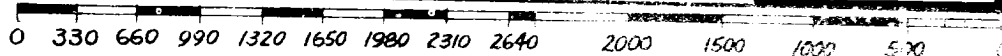
CERTIFICATION

I hereby certify that the information furnished above is true and complete to the best of my knowledge and belief.

Name A. S. Rhee
Position Division Superintendent
Company Sun Oil Company
Date 9-9-63

I hereby certify that the well location shown on the plat is true and correct as shown from field notes of actual survey made by me or under my supervision, and that the same is true and correct to the best of my knowledge and belief.

Date Surveyed 9-6-63
Registered Professional Engineer and a Surveyor James H. Howell
Certificate No. 20150



INSTRUCTIONS FOR COMPLETION OF FORM C-128

1. Operator shall furnish and certify to the information called for in Section A.
2. Operator shall outline the dedicated acreage for *both* oil and gas wells on the plat in Section B.
3. A registered professional engineer or land surveyor registered in the State of New Mexico or approved by the Commission shall show on the plat the location of the well and certify this information in the space provided.
4. All distances shown on the plat must be from the outer boundaries of the Section.
5. If additional space is needed for listing owners and their respective interests as required in question 3 of Section A, please use space below.