

All distances must be from the outer boundaries of the Section.

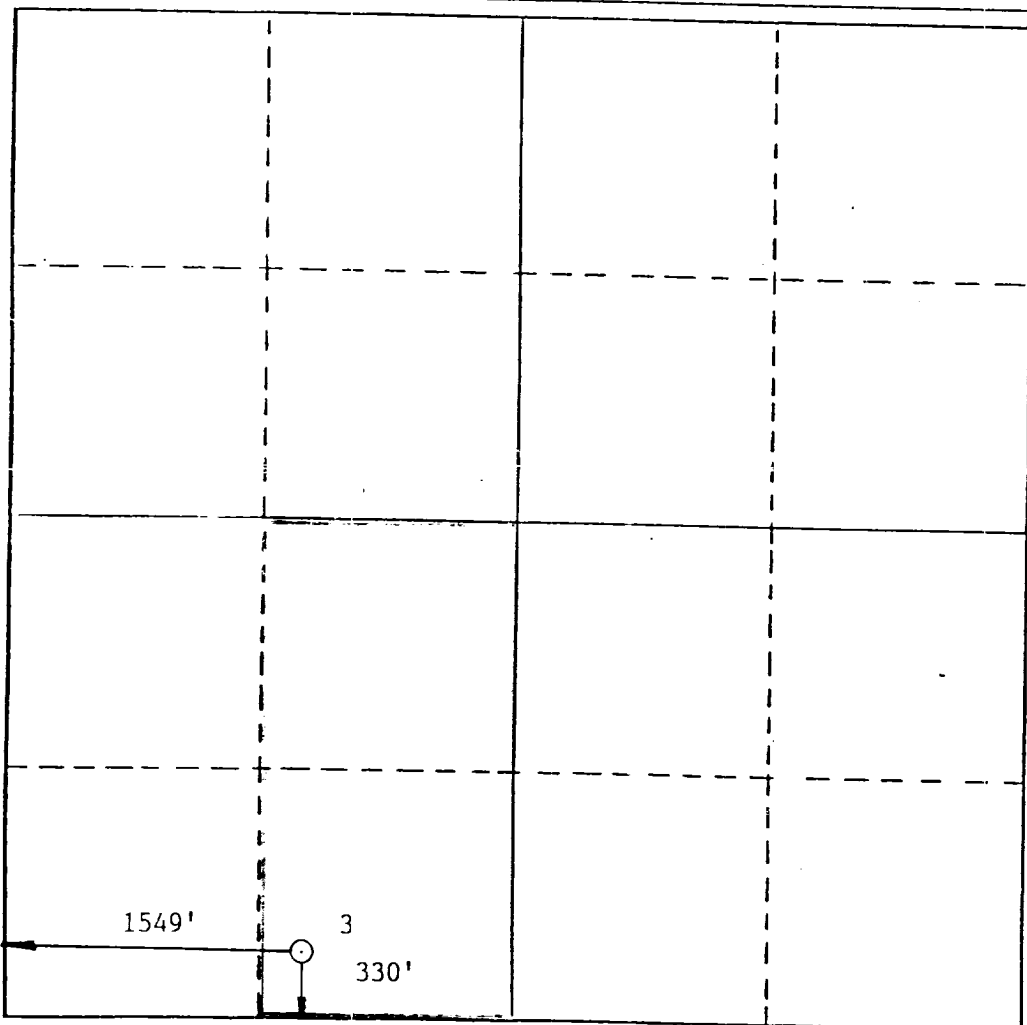
Operator Amoco Production Company			Lease State CK		Well No. 3
Unit Letter N	Section 19	Township 21-S	Range 37-E	County Lea	
Actual Footage Location of Well: 330 feet from the South line and 1549 feet from the West line					
Ground Level Elev. 3504	Producing Formation Blinebry		Pool Blinebry - Gas	Dedicated Acreage: 80 Acres	

1. Outline the acreage dedicated to the subject well by colored pencil or hatchure marks on the plat below.
2. If more than one lease is dedicated to the well, outline each and identify the ownership thereof (both as to working interest and royalty).
3. If more than one lease of different ownership is dedicated to the well, have the interests of all owners been consolidated by communitization, unitization, force-pooling, etc?

☒ Yes ☐ No If answer is "yes," type of consolidation _____

If answer is "no," list the owners and tract descriptions which have actually been consolidated. (Use reverse side of this form if necessary.) _____

No allowable will be assigned to the well until all interests have been consolidated (by communitization, unitization, forced-pooling, or otherwise) or until a non-standard unit, eliminating such interests, has been approved by the Division.



CERTIFICATION

I hereby certify that the information contained herein is true and complete to the best of my knowledge and belief.

Name H. J. Blain
Position St. Admin. Analyst
Company Amoco Production
Date January 3, 1990

I hereby certify that the well location shown on this plat was plotted from field notes of actual surveys made by me or under my supervision, and that the same is true and correct to the best of my knowledge and belief.

Date Surveyed _____

Registered Land Surveyor _____

Certificate No. _____

RECEIVED

JAN 05 1991

OCO
HOBBS OFFICE

NEW MEXICO OIL CONSERVATION COMMISSION
WELL LOCATION AND ACREAGE DEDICATION PLAT

Form C-102
Supersedes C-128
Effective 1-1-65

All distances must be from the outer boundaries of the Section.

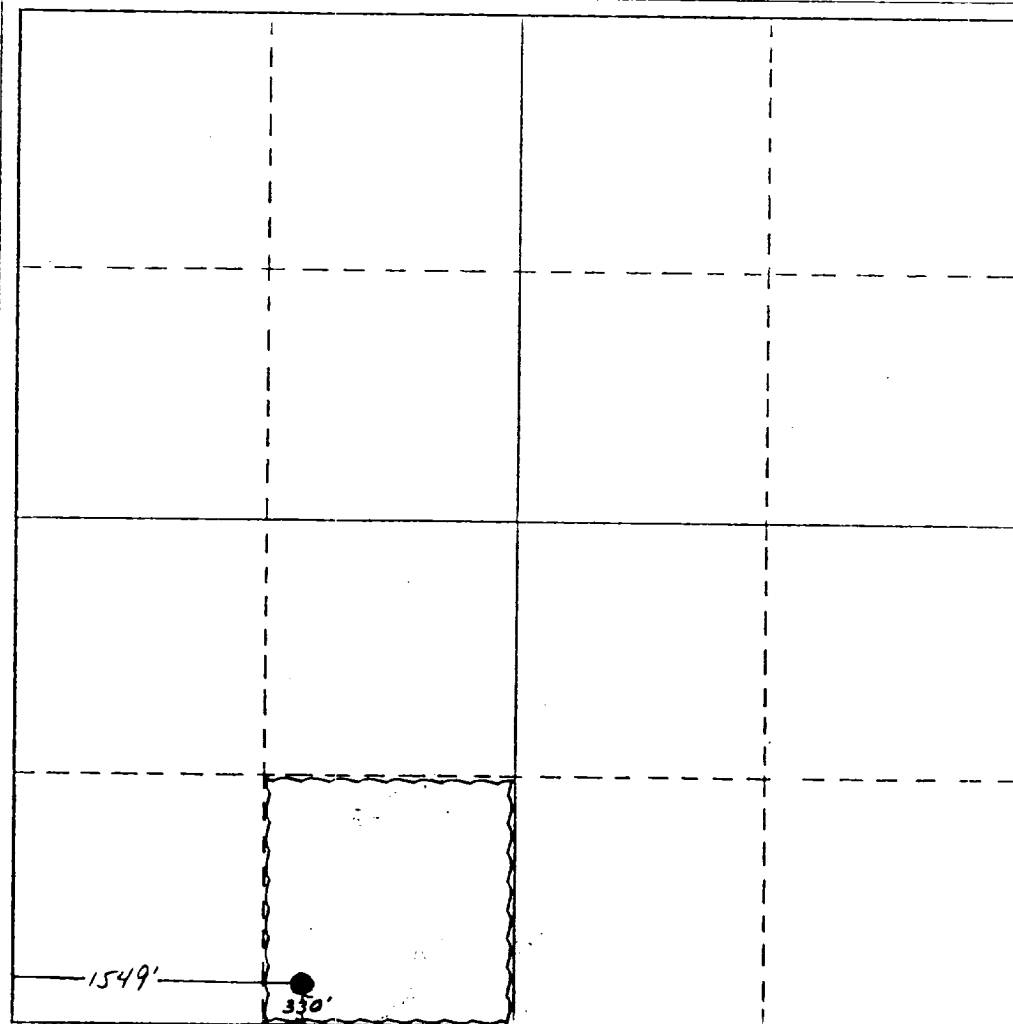
Operator Amoco Production Company			Lease State CK		Well No. 3
Unit Letter N	Section 19	Township 21-S	Range 37-E	County Lea	
Actual Footage Location of Well: 330 feet from the South line and 1549 feet from the West line.					
Ground Level Elev. 3504'	Producing Formation Blinebry		Permit Blinebry-Oil		Dedicated Acreage 40

1. Outline the acreage dedicated to the subject well by colored pencil or hatchure marks on the plat below.
2. If more than one lease is dedicated to the well, outline each and identify the ownership thereof (both as to working interest and royalty).
3. If more than one lease of different ownership is dedicated to the well, have the interests of all owners been consolidated by communitization, unitization, force-pooling, etc?

☐ Yes ☐ No If answer is "yes," type of consolidation _____

If answer is "no," list the owners and tract descriptions which have actually been consolidated. (Use reverse side of this form if necessary.) _____

No allowable will be assigned to the well until all interests have been consolidated (by communitization, unitization, forced-pooling, or otherwise) or until a non-standard unit, eliminating such interests, has been approved by the Commission.



CERTIFICATION

I hereby certify that the information contained herein is true and complete to the best of my knowledge and belief.

Name *Charles M. Herring*
Position Assist. Admin. Analyst
Company Amoco Production Company

Date May 23, 1983

I hereby certify that the well location shown on this plat was plotted from field notes of actual surveys made by me or under my supervision, and that the same is true and correct to the best of my knowledge and belief.

Date Surveyed _____

Registered Professional Engineer and/or Land Surveyor _____

Certificate No. _____

OWWO

COUNTY TBA FIELD Paddock & Elinebry STATE NM MN 20540
 OPR PAN AMERICAN PET. CORP. MAP
 3 Core "OK"
 Sec 19, 1-21-5, R-37-
 330' ESL, 1549' FWL of Sec.

Re-Comp 1-14-70	CLASS		OWWO	
	FORMATION	DATUM	FORMATION	DATUM
CSC & SY TUBING				
13 3/8" at 500' w/300 sx				
9 5/8" at 2635' w/200 sx				
7" at 5969' w/760 sx				
LOGS EL GR RA IND HC A				
	TD 5969'	PBD 5936'		

IP (Paddock) Perf 5142-52' P 88 BOPD + 42 BW. Pot based on 24
 hr test. COR 130.

(Blinebry) Perfs 5567-5926' NO NEW POTENTIAL.

Distribution limited and publication prohibited by subscribers' agreement
 Reproduction rights reserved by Williams & Lee Scouting Service, Inc.

CONT	PROP DEPTH	TYPE	WO
DATE	5926'		

1-26-70 P.R.C. 1-29-70
 PD 5926' WO (Paddock & Elinebry)
 (Orig. comp 6-13-63 thru (Grayburg) Perfs 3796-3809'
 & (Blinebry) Perfs 5868-5926', OTD 5969', OPR 5936')
 TD 5969'; PBD 5936'; COMPLETE
 Sqzd (3796-3809') w/100 sx
 Perf (Paddock) 5142-52' w/2 SPI
 Acid (5142-52') 2500 gals (15%)
 Perf (Blinebry) 5567', 5574', 5579', 5606',
 5616', 5623', 5633', 5641', 5650', 5662', 5660',
 5681', 5706', 5735', 5739', 5820', 5831', 5841'
 w/1 SPI
 Acid (5567-5926') 3000 gals
 Frac (5567-5926') 40,000 gals wtr + 35,000# sd
 1-29-70 COMPETITION REPORTED

Dual
COUNTY Lea FIELD Blinebry & Penrose- / STATE N.M. NO.
OPR. Pan American Pet. Corp. Skelly MAP
NO. 3 LSE State 'CK'
SEC 19 T 21S BLK 37E SUR CO-ORD.
LOC 330' fr S Line & 1549' fr W Line of Sec.
MI FROM 2-20-63(Gryb) CLASS EL 35732
SPUD 12-4-62 COMP 5-13-63(B) FORMATION DATUM FORMATION DATUM
TRL See below LOG:
CSG & SX Yates 2589
13 3/8" 500' 500 Queen 3347
9 5/8" 2635' 200 Penr 3455
7" 5969' 760 SA 3980
TBG. DEPTH SIZE Glor 5097
LOGS EL GR RA IND HC A Bli 5620
TD 5969' PB 5936'
PROD INT (DAILY RATE) BS&W GH GOR GTY C. P. T. P. HRS
3796-3809' Flo. 62 BO + 15 BW 14/64" 4460 35. 900# 725# 24'
(Grayburg)
5868-5926' Flo. 11 BO 0 20/64" 10298 42. 24'
(Blinebry)
Distribution limited and publication prohibited by subscribers' agreement.
Reproduction rights reserved by Williams & Lee Scouting Service, Inc.
CONT Davidson Drlg. Co. PROP DEPTH 6000' TYPE
DATE

F.R. 12-26-62, Blinebry & Grayburg. Oper's Elev. 3514'
PD 6000' RT - Davidson Drlg. Co.
12-10-62 TD 2635', WOC.
12-17-62 TD 4527', lost circ.
12-31-62 TD 5969', MORT.
1-7-63 TD 5969', PB 5936', swbg.
Perf (Blinebry) 8/5868-72', 8/5881-85', 6/5896-99',
4/5918-20' & 4/5924-26', treated 1000 gals acid,
SF 17,000gals. + 34,000#.
1-14-63 TD 5969', PB 5936', flg. load. (-763).
Tr. 50 BO + 65 Gals emulsion breaker.
Fld. 8 BLO in 30' thru 16/64" choke.
1-21-63 TD 5969', PB 5936', tstg.
Fld. 63 BLO/14' thru 16/64" ch.
Re-Perf 60/5868-98', 16/5918-26', tr. 15,000 Ac.
1-28-63 TD 5969', PB 5936', tstg.
Fld. 10 BLO/24' thru 3/4" ch., TP 75#. (-653).
2-4-63 TD 5969', PB 5936', tstg.

-cont.- Perf (Grayburg) 4/3796-98', 10/3804-09', 11/3804-09'
gals acid, fld. 80 BLO/72' thru 16/64" ch. (-155)
2-11-63 TD 5969', PB 5936', tstg.
SOF (Grayburg) 10,000 gals + 20,000# sd.
Fld. 40 BLO/9' thru 16/64" ch.
2-18-63 TD 5969', PB 5936', flg. load. (-155).
Fld. 230 BLO + 57 BW/72' thru 14/64" & 16/64"
2-25-63 TD 5969', PB 5936', prep to dual.
3-4-63 TD 5969', PB 5936', prep to dual.
3-11-63 TD 5969', PB 5936', prep to dual.
3-18-63 TD 5969', PB 5936', prep to dual.
3-25-63 TD 5969', PB 5936', WO Dual Completion.
(Final posting until status changes).
6-24-63 TD 5969', PB 5936', COMPLETED
Rec load.

—

—