

NEW MEXICO OIL CONSERVATION COMMISSION  
WELL LOCATION AND ACREAGE DEDICATION PLATForm C-102  
Supersedes C-128  
Effective 1-1-65

All distances must be from the outer boundaries of the Section.

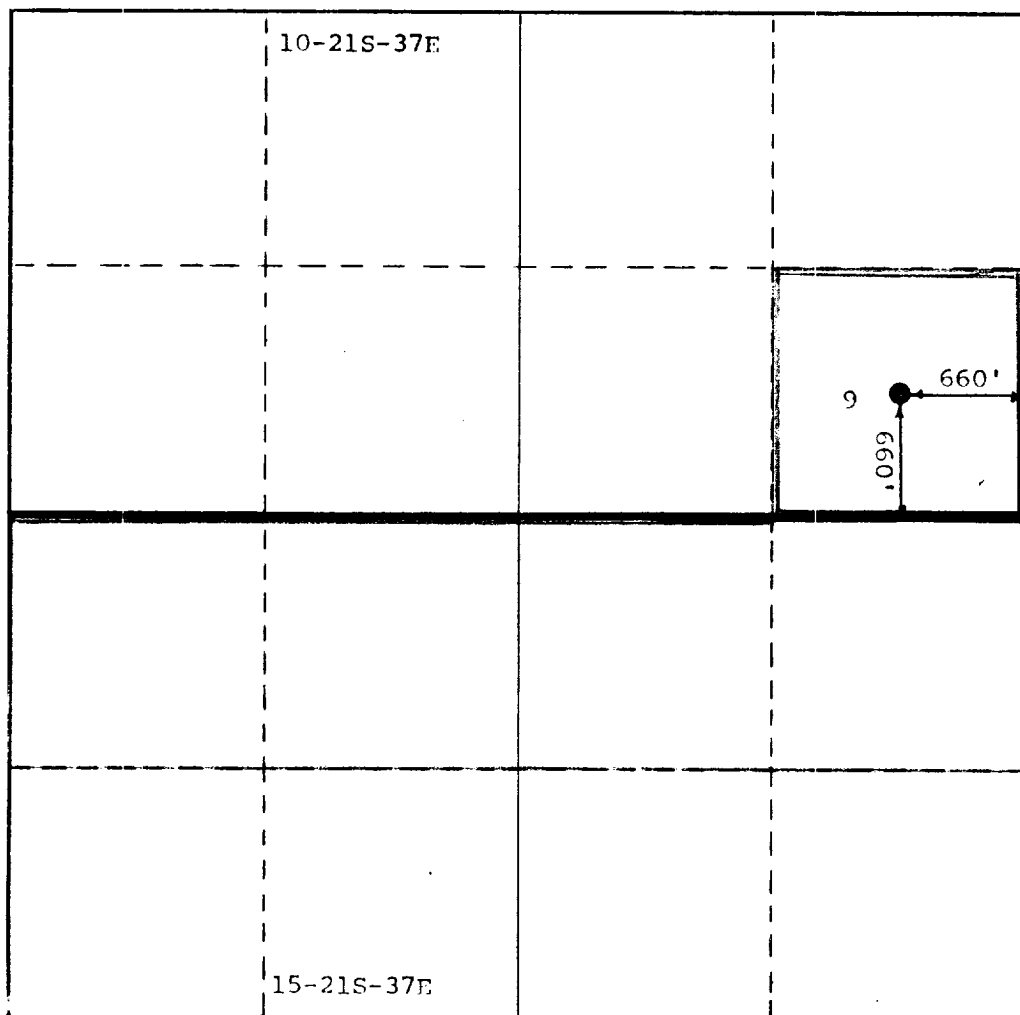
Operator GETTY OIL COMPANY		Lease STATE "S"		Well No. 9	
Unit Letter D	Section 10	Township 21-S	Range 37- E	County LEA	
Actual Footing Location of Well: 660 feet from the SOUTH line and 660 feet from the EAST line					
Ground Level Elev. 3452' D.F.	Producing Formation ELINEBRY		Pool BLINEBRY	Dedicated Acreage: 40 Acres	

1. Outline the acreage dedicated to the subject well by colored pencil or hachure marks on the plat below.
2. If more than one lease is dedicated to the well, outline each and identify the ownership thereof (both as to working interest and royalty).
3. If more than one lease of different ownership is dedicated to the well, have the interests of all owners been consolidated by communitization, unitization, force-pooling, etc?

☐ Yes ☐ No If answer is "yes," type of consolidation \_\_\_\_\_

If answer is "no," list the owners and tract descriptions which have actually been consolidated. (Use reverse side of this form if necessary.) \_\_\_\_\_

No allowable will be assigned to the well until all interests have been consolidated (by communitization, unitization, forced-pooling, or otherwise) or until a non-standard unit, eliminating such interests, has been approved by the Commission.



## CERTIFICATION

I hereby certify that the information contained herein is true and complete to the best of my knowledge and belief.

Original Signed By  
C. L. Wade

Name  
C. L. WADE

Position  
AREA SUPERINTENDENT

Company  
GETTY OIL COMPANY

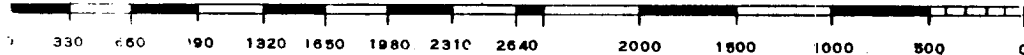
Date  
January 24, 1972

I hereby certify that the well location shown on this plat was plotted from field notes of actual surveys made by me or under my supervision, and that the same is true and correct to the best of my knowledge and belief.

Date Surveyed

Registered Professional Engineer  
and/or Land Surveyor

Certificate No.



COUNTY: LEA FIELD Blinebry & Drinkard STATE N.M.

OPR TIDEWATER OIL COMPANY :P

9 State "S" CO-ORD

Sec. 10, T-2i-S, R-37-E

660' fr S & E Lines of Sec.

Spud 2-7-64 CLASS EL 3452'

Comp.	FORMATION	DATUM	FORMATION	DATUM
3-9-64(B); 3-3-64(D)	LOG:			
SG & SX - TUBING	Anhy 1273			
13 3/8" 336' 325	Glor 5193			
8 5/8" 2999' 960	Bli 5578			
5 1/2" 6709' 1065	Tubb 6159			
	Drkd 6458			
LOGS EL GR RA IND HC A	TD 6710', PBD 6673'			

IP Blinebry Perfs 5786-5925' Flwd 187 BOPD. Pot. Based on 24 hr test thru 14/64" chk., TP 500#, Gravity 38.6, GOR 804.

IP Drinkard Perfs 6493-6559' Flwd 134 BOPD. Pot. Based on 20 hr test of 112 BO thru 15/64" chk., TP 825#, CP Pkr, Gravity 38.1, GOR 4567.

Distribution limited and publication prohibited by subscribers' agreement.  
Reproduction rights reserved by Williams & Lee Scouting Service, Inc.

CONT. PROP DEPTH 6700' TYPE

DATE

F.R. 2-6-64; Oper's Elev. 3452' DF

PD 6700' - Blinebry & Drinkard

2-10-64 TD 343', WOC.

2-17-64 Drlg. 4683'.

2-24-64 TD 6710', WOC.

3-2-64 TD 6710', flwg load.

Perf (Drinkard) @ 6493', 6508', 6523', 6535', 6541' & 6559'

Ac. 1000 gals.

3-9-64 Frac 20,000 gals oil + 20,500# sd.

TD 6710', PBD 6673', on potential (Blinebry) Drinkard Completed.

Perf (Blinebry) @ 5786', 5791', 5796', 5821', 5837', 5861', 5893', 5902', & 5925' W/1 SPI

Ac. 1500 gals.

3-16-64 Frac 30,000 gals oil + 30,000# sd.

TD 6710', PBD 6673', COMPLETED.