

NO. OF COPIES RECEIVED	
DISTRIBUTION	
SALE	
RENT	
TRANSPORT	
OPERATOR	

NEW MEXICO OIL CONSERVATION COMMISSION  
Santa Fe, New Mexico

Form G-101  
Revised (12/1/55)

## NOTICE OF INTENTION TO DRILL

Notice must be given to the District Office of the Oil Conservation Commission and approval obtained before drilling or recompletion begins. If changes in the proposed plan are considered advisable, a copy of this notice showing such changes will be returned to the sender. Submit this notice in QUINTUPLICATE. One copy will be returned following approval. See additional instructions in Rules and Regulations of the Commission. If State Land submit 6 Copies Attach Form G-125 in triplicate to first 3 copies of form G-101

Hobbs, New Mexico  
(Place)

January 17, 1964  
(Date)

OIL CONSERVATION COMMISSION  
SANTA FE, NEW MEXICO

Gentlemen:

You are hereby notified that it is our intention to commence the Drilling of a well to be known as

**Amerada Petroleum Corporation**

(Company or Operator)

State D "C"

(Lease)

Well No. 2

E

The well is

located 2310' feet from the North line and 886.4 feet from the West line of Section 19, T. 21S, R. 37E, NMPM.

(GIVE LOCATION FROM SECTION LINE)

Drinkard

Lea

County

B-37E

If State Land the Oil and Gas Lease is No. B-1040

If patented land the owner is

Address

We propose to drill well with drilling equipment as follows: Rotary Tools

The status of plugging bond is Blanket

Drilling Contractor: Noble Drilling Co.

321 Pan American Bldg.

Tulsa, Oklahoma

We intend to complete this well in the Drinkard

formation at an approximate depth of 6750 feet.

### CASING PROGRAM

We propose to use the following strings of Casing and to cement them as indicated:

Size of Hole	Size of Casing	Weight per Foot	New or Second Hand	Depth	Sacks Cement
20"	16"	53#	New	300'	450
13-3/4"	13-3/8" & 10-3/4"	61# & 40.5#	New	2575'	1725
9-7/8"	4 Strings of 2-7/8" Reg.	6.4#	New	6750'	*

If changes in the above plans become advisable we will notify you immediately.

ADDITIONAL INFORMATION (If recompletion give full details of proposed plan of work.)

\* Plan to cement calculated back to 2500'.

Approved \_\_\_\_\_, If \_\_\_\_\_  
Except as follows:

Sincerely yours,

**Amerada Petroleum Corporation**  
(Company or Operator)

By

Position: District Superintendent

Send Communications regarding well to

Name: Amerada Petroleum Corporation

Box 668 - Hobbs, New Mexico

OIL CONSERVATION COMMISSION

By

NEW MEXICO OIL CONSERVATION COMMISSION  
WELL LOCATION AND ACREAGE DEDICATION PLAT

HOBBBS OFFICE FORM C-128  
Revised 5/1/57

SEE INSTRUCTIONS FOR COMPLETING THIS FORM ON THE REVERSE SIDE

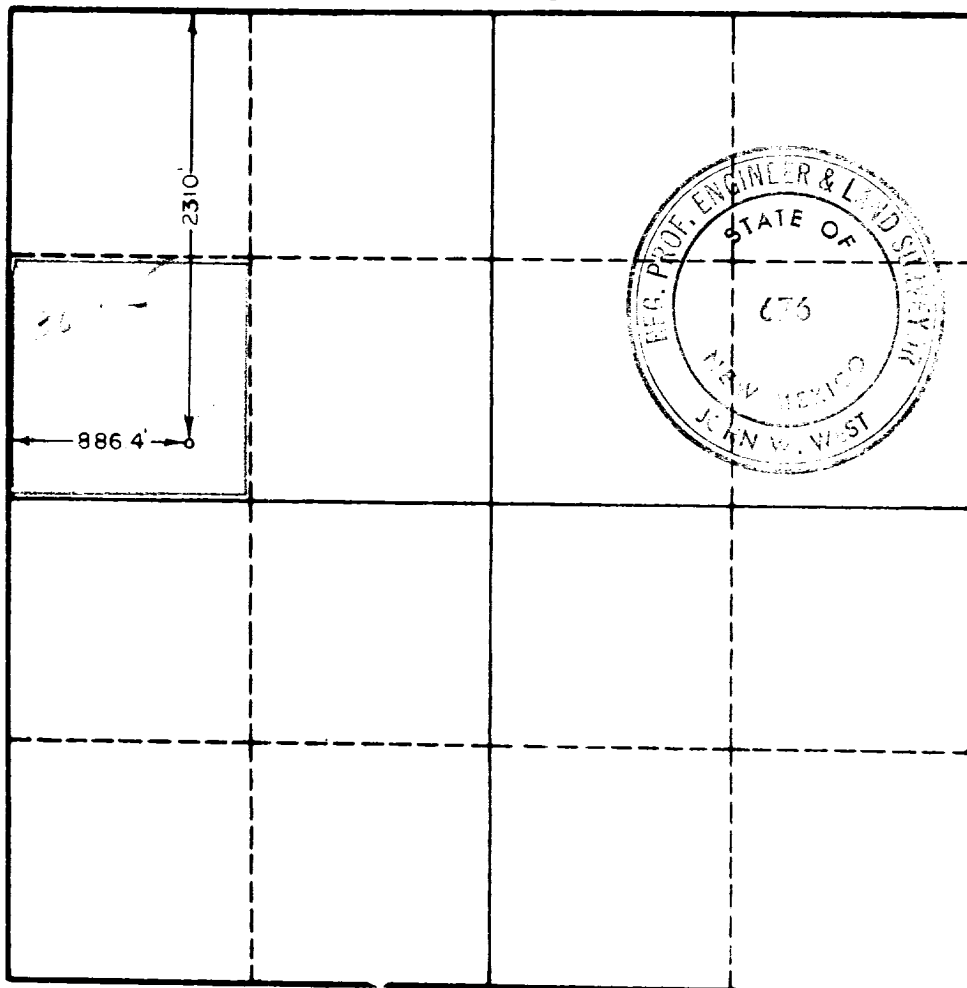
SECTION A

Operator <b>AMERADA PET. CORP.</b>			Lease <b>STATE "DC"</b>		Well No. <b>2</b>
Unit Letter <b>E</b>	Section <b>19</b>	Township <b>21 SOUTH</b>	Range <b>37 EAST</b>	County <b>LEA</b>	
Actual Footage Location of Well: <b>2310</b> feet from the <b>NORTH</b> line and <b>886.4</b> feet from the <b>WEST</b> line					
Ground Level Elev.	Producing Formation <b>Drinkard</b>		Pool <b>Drinkard</b>	Dedicated Acreage: <b>40 3/4</b> Acres	

1. Is the Operator the only owner in the dedicated acreage outlined on the plat below? YES ☒ NO \_\_\_\_ ("Owner" means the person who has the right to drill into and to produce from any pool and to appropriate the production either for himself or for himself and another. (65-3-29 (e) NMSA 1935 Comp.)
2. If the answer to question one is "no," have the interests of all the owners been consolidated by communitization agreement or otherwise? YES \_\_\_\_ NO \_\_\_\_ If answer is "yes," Type of Consolidation \_\_\_\_
3. If the answer to question two is "no," list all the owners and their respective interests below:

Owner	Land Description

SECTION B



CERTIFICATION

I hereby certify that the information in SECTION A above is true and complete to the best of my knowledge and belief.

Name	<i>John W. West</i>
Position	<b>District Superintendent</b>
Company	<b>Amerada Petroleum Corp.</b>
Date	<b>December 20, 1963</b>

I hereby certify that the well location shown on the plat in SECTION B was plotted from field notes of actual surveys made by me or under my supervision, and that the same is true and correct to the best of my knowledge and belief.

Date Surveyed	<b>12-19-63</b>
Registered Professional Engineer and/or Land Surveyor, <b>JOHN W. WEST</b>	
<i>John W. West</i>	
Certificate No.	<b>N. M. - P. E. &amp; L. S. NO. 676</b>

0 350 660 990 1320 1660 1980 2310 2640 2000 1500 1000 500