

NO. OF COPIES RECEIVED	
DISTRIBUTION	
SANTA FE	
FILE	
U.S.G.S.	
LAND OFFICE	
OPERATOR	

NEW MEXICO OIL CONSERVATION COMMISSION

Form C-101
Revised 1-1-66

SA. District Type of Lease	
STATE <input checked="" type="checkbox"/> NEW <input type="checkbox"/>	
Section 11 6. Section 11	
L-4096	

APPLICATION FOR PERMIT TO DRILL, DEEPEN, OR PLUG BACK

a. Type of Work	b. Type of Well			c. Name of Operator	d. Name of Lessee
	DRILL <input type="checkbox"/>	DEEPEN <input type="checkbox"/>	PLUG BACK <input checked="" type="checkbox"/>	ERNIE L. HEGWER, INC.	Thomas State
	DAY WELL <input checked="" type="checkbox"/>	OTHER <input type="checkbox"/>	SINGLE ZONE <input checked="" type="checkbox"/>	601 N. SHIPP, Hobbs, New Mexico 88240	#1
			MULTIPLE ZONE <input type="checkbox"/>	4542.1 North	Eumont-Yates
				LOCATED 760 FEET FROM THE West LINE	Lea
				4200'	Yates
				Rotary	
				3671 DF	State wide
				Baber Well Service	August 18, 1979

PROPOSED CASING AND CEMENT PROGRAM

SIZE OF HOLE	SIZE OF CASING	WEIGHT PER FOOT	SETTING DEPTH	SACKS OF CEMENT	EST. TOP
17-1/2	13-3/8	48#	1189.20	1200 sax	Circulated
12-1/4	9-5/8	36# - 40#	3303.00	300 sax	3350
5-1/2	5-1/2	15#	4200	250 sax	3060

Drill out plugs to 4200', circulating the hole with 10 lbs. brine and selected mud program. Run 5-1/2 to 4200' and cement with 250 saxes to 3060'. Log and perforate the following with casing gun 3863', 3871', 3882', 3887', 3912', 3960', 3966', 3985', 3987', one shot. Acidize perforations with 2250 gals. 15% MCA acid. Swab back and test. Blow-out perverater will be used, series 600 double closing.

IN ABOVE SPACE DESCRIBE PROPOSED PROGRAM: IF PROPOSAL IS TO DEEPEN OR PLUG BACK, GIVE DATA ON PRESENT PRODUCTIVE ZONE AND PROPOSED NEW PRODUCTIVE ZONE. GIVE BLOWOUT PREVENTER PROGRAM, IF ANY.

I hereby certify that the information above is true and complete to the best of my knowledge and belief.

Signed Ernie L. Hegwer Title President Date August 16, 1979

(This space for State Use)

APPROVED BY Supervisor TITLE SUPERVISOR DISTRICT 1 DATE AUG 17 1979

CONDITIONS OF APPROVAL, IF ANY:

NEW MEXICO OIL CONSERVATION COMMISSION
WELL LOCATION AND ACREAGE DEDICATION PLAT

Form C-102
Supersedes C-128
Effective 1-1-65

All distances must be from the outer boundaries of the Section.

Operator ERNIE L. HEGWER, INC.		Lease Thomas State		Well No. #1
Unit Letter M	Section 4	Township 21S	Range 35E	County Lea
Actual Postup Location of Well:				
760 feet from the West line and		4542.1 feet from the North line		
Ground Level Elev. 3656.3	Underlying Formation Yates	Pool Eumont	Dedicated Acreage 160 Acres	

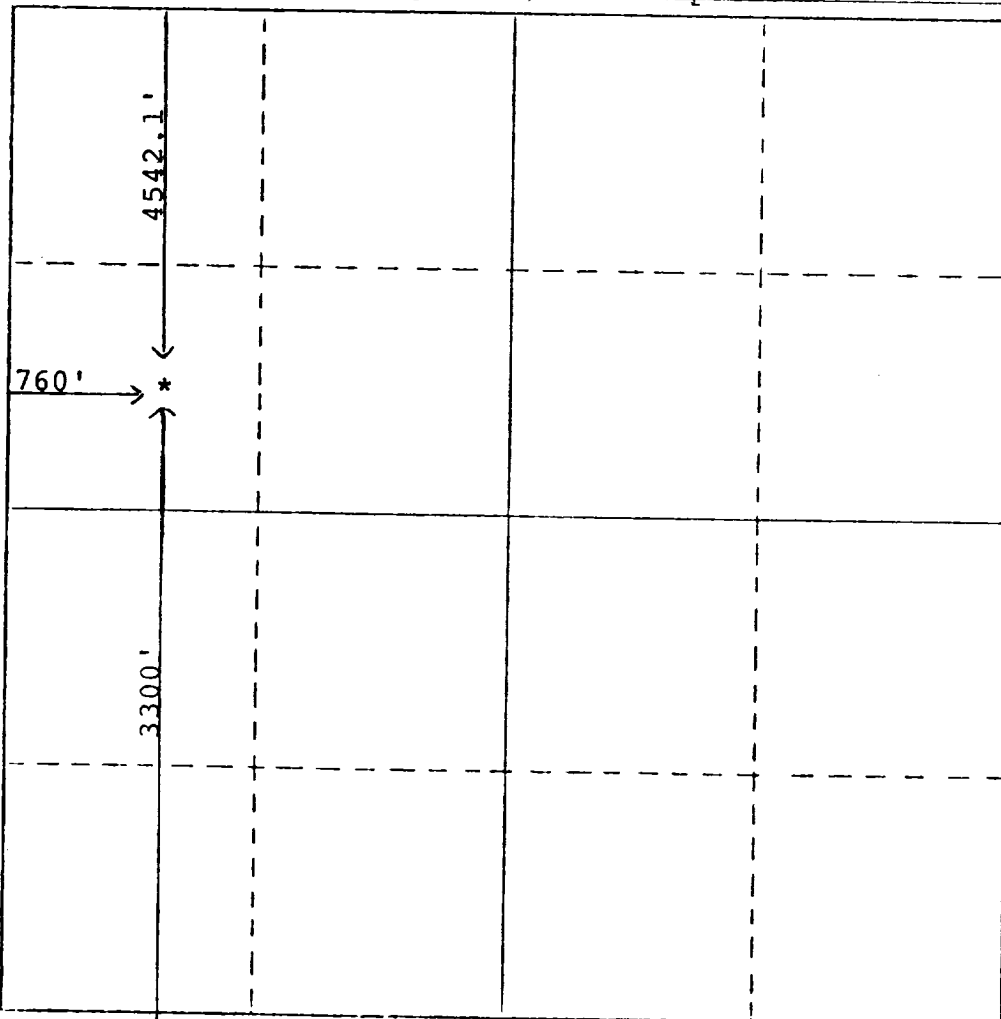
1. Outline the acreage dedicated to the subject well by colored pencil or hatchure marks on the plat below.
2. If more than one lease is dedicated to the well, outline each and identify the ownership thereof (both as to working interest and royalty).
3. If more than one lease of different ownership is dedicated to the well, have the interests of all owners been consolidated by communitization, unitization, force-pooling, etc?

☐ Yes ☐ No If answer is "yes," type of consolidation _____

If answer is "no," list the owners and tract descriptions which have actually been consolidated. (Use reverse side of this form if necessary.) _____

No allowable will be assigned to the well until all interests have been consolidated (by communitization, unitization, forced-pooling, or otherwise) or until a non-standard unit, eliminating such interests, has been approved by the Commission.

Section 4, Range 35E, Township 21S



CERTIFICATION

I hereby certify that the information contained herein is true and complete to the best of my knowledge and belief.

Name
President
Position
Ernie L. Hegwer, Inc.
Company
August 16, 1979
Date

I hereby certify that the well location shown on this plat was plotted from field notes of actual surveys made by me or under my supervision, and that the same is true and correct to the best of my knowledge and belief.

December 28, 1964

Date Surveyed
John West Engineering
Registered Professional Engineer
and/or Land Surveyor

Certification

310 320 330 340 350 360 370 380 390 400 410 420 430 440 450 460 470 480 490 500 510 520 530 540 550 560 570 580 590 600