

NO. OF COPIES RECEIVED		
DISTRIBUTION		
SANTA FE		
FILE		
U.S.G.S.		
LAND OFFICE		
OPERATOR		

NEW MEXICO OIL CONSERVATION COMMISSION

Form C-101
Revised 1-1-65

5A. Indicate Type of Lease	
STATE <input type="checkbox"/>	FEE <input checked="" type="checkbox"/>
5. State Oil & Gas Lease No.	

APPLICATION FOR PERMIT TO DRILL, DEEPEN, OR PLUG BACK

1a. Type of Work		7. Unit Agreement Name	
b. Type of Well OIL WELL <input checked="" type="checkbox"/> GAS WELL <input type="checkbox"/> OTHER <input type="checkbox"/>		8. Farm or Lease Name Sarkisys	
2. Name of Operator Sinclair Oil & Gas Company		9. Well No. 5	
3. Address of Operator P. O. Box 1470, Midland, Texas		10. Field and Pool, or Wildcat Warts (Abo)	
4. Location of Well UNIT LETTER 0 LOCATED 1980 FEET FROM THE East LINE AND 660 FEET FROM THE South LINE OF SEC. 23 TWP. 21-S RGE. 37-E NMPM		12. County Lea	
19. Proposed Depth 7300		19A. Formation Abo	20. Rotary or C.T. Rotary
21. Elevations (Show whether DF, RT, etc.)	21A. Kind & Status Plug. Bond In Effect	21E. Drilling Contractor Contract not let	22. Approx. Date Work will start

23.

PROPOSED CASING AND CEMENT PROGRAM

SIZE OF HOLE	SIZE OF CASING	WEIGHT PER FOOT	SETTING DEPTH	SACKS OF CEMENT	EST. TOP
17-1/2"	13-3/8"	48#	350	400	Surface
11"	8-5/8"	21# & 32#	3200	850	Surface
7-7/8"	5-1/2"	11#, 15.5#, 17#	3050-TD	750	3050'

IN ABOVE SPACE DESCRIBE PROPOSED PROGRAM: IF PROPOSAL IS TO DEEPEN OR PLUG BACK, GIVE DATA ON PRESENT PRODUCTIVE ZONE AND PROPOSED NEW PRODUCTIVE ZONE. GIVE BLOWOUT PREVENTER PROGRAM, IF ANY.

I hereby certify that the information above is true and complete to the best of my knowledge and belief.

Signed J. C. (Signature) Title District Clerk Date May 6, 1965
(This space for State Use)

APPROVED BY (Signature) TITLE _____ DATE _____

CONDITIONS OF APPROVAL, IF ANY:

NEW XICO OIL CONSERVATION COMMISSION
WELL LOCATION AND ACREAGE DEDICATION PLAT

Form C-102
Supersedes C-128
Effective 1-1-65

All distances must be from the outer boundaries of the Section.

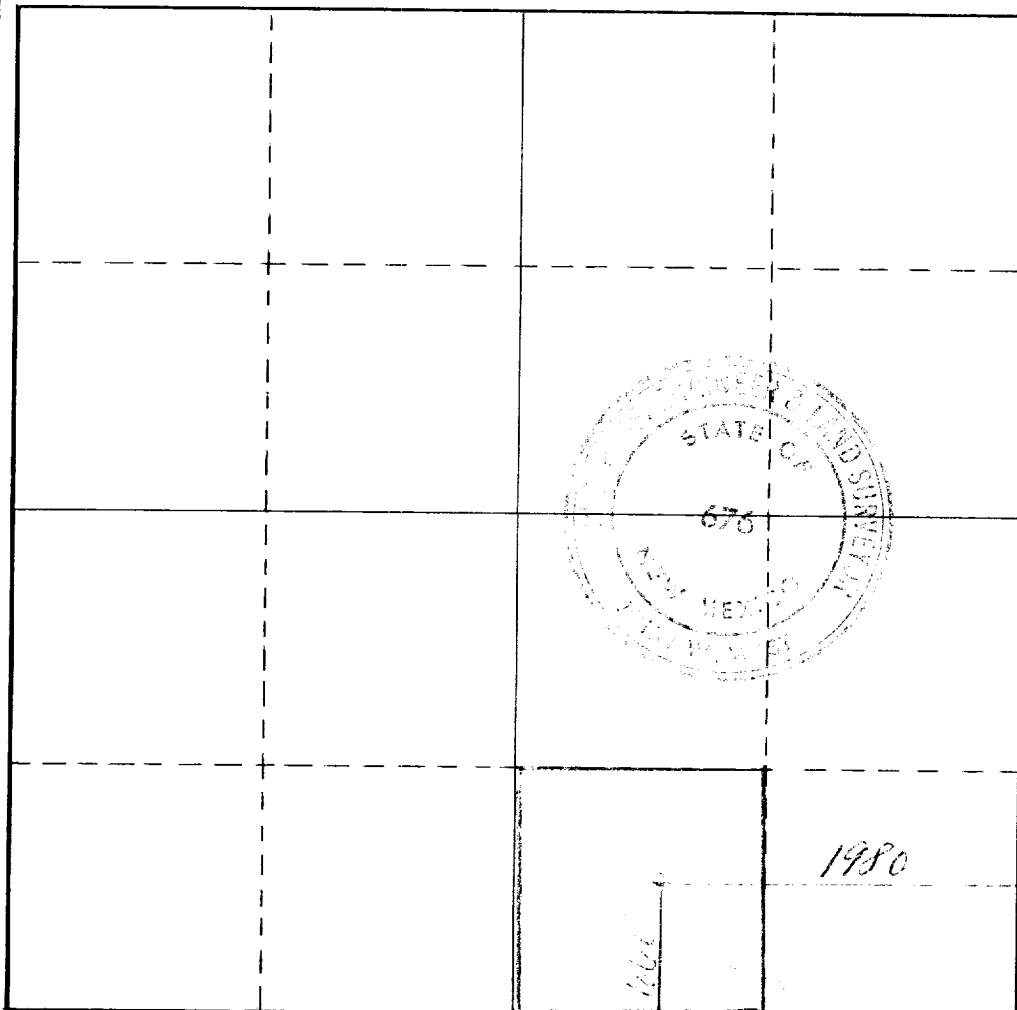
Operator SINCLAIR OIL & GAS COMPANY			Lease SARKKEYS		Well No. 5
Unit Letter 0	Section 23	Township 21 SOUTH	Range 37 EAST	County IEA	
Actual Footage Location of Well: 660 feet from the SOUTH line and 1980 feet from the EAST line					
Ground Level Elev:	Producing Formation Abo		Pool Wants (Abo)		Dedicated Acreage: 40 Acres

1. Outline the acreage dedicated to the subject well by colored pencil or hachure marks on the plat below.
2. If more than one lease is dedicated to the well, outline each and identify the ownership thereof (both as to working interest and royalty).
3. If more than one lease of different ownership is dedicated to the well, have the interests of all owners been consolidated by communitization, unitization, force-pooling, etc?

☐ Yes ☐ No If answer is "yes," type of consolidation _____

If answer is "no," list the owners and tract descriptions which have actually been consolidated. (Use reverse side of this form if necessary.) _____

No allowable will be assigned to the well until all interests have been consolidated (by communitization, unitization, forced-pooling, or otherwise) or until a non-standard unit, eliminating such interests, has been approved by the Commission.



CERTIFICATION

I hereby certify that the information contained herein is true and complete to the best of my knowledge and belief.

Name
[Signature]

Position
District Clerk

Company
Sinclair Oil & Gas Co.

Date
May 6, 1965

I hereby certify that the well location shown on this plat was plotted from field notes of actual surveys made by me or under my supervision, and that the same is true and correct to the best of my knowledge and belief.

Date Surveyed
May 6, 1965

Registered Professional Engineer and/or Land Surveyor
[Signature]

Certificate No.
676

0 330 660 990 1320 1650 1980 2310 2640 2970 3300 3630 3960 4290 4620 4950 5280 5610 5940 6270 6600

COUNTY LEA FIELD Tubb/Wadcz-Abo STATE NM
 OPR SINCLAIR OIL & GAS COMPANY MAP
5 Sarkeys CO-ORD
Sec. 23, T-21-S, R-37-E
660' fr S Line & 1980' fr E Line of Sec.
Spd 5-14-65; Cmp 8-5-65 (Tubb); CLASS E [REDACTED]
Cmp 7-10-65 (Abo)

CSG & SX - TUBING	LOG:	FORMATION	DATUM	FORMATION	DATUM
13 3/8" 367' 400		Yates 2533			
8 5/8" 3210' 1885		7-R 2793			
5 1/2" lnr 3010-7284' 1050		Queen 3360			
		SA 3942			
		Glor 5150			
		Tubb 6115			
		Abo 6678			
		TD 7284', PBD 7252'			

IP Tubb Perfs 6120-6264' CAOF 1850 MCFCPD. Pot. Based on 4-point test; 72 hr SIWHP 1407#.

IP Abo Perfs 6876-7221' Flwd 216 BOPD. Pot. Based on 12 hr test of 108 BO thru 20/64" chk., TP 250#, GOR 2780.

Distribution limited and publication prohibited by subscribers' agreement.
 Reproduction rights reserved by Williams & Lee Scouting Service, Inc.

CONT. Cactus Drlg. Co. PROP DEPTH 7300' TYPE
 DATE

F.R. 5-13-65; Oper's Elev. 3382' GL
 PD 7300' - Abo
 Contr. - Cactus Drlg. Co.
 5-17-65 Drlg. 2000' salt & anhy.
 5-24-65 Drlg. 4525' lm.
 6-1-65 TD 6970', prep to DST 6870-6970'.
 DST (Abo) 6804-6904', open 2 hrs,
 GTS 5 mins @ TSTM,
 Rec 1290' DM + 150' GCM,
 1 hr ISIP 1048#, FP 134-179#, no FSIP reported.
 6-7-65 TD 7284', WCC.
 DST (Abo) 6870-6970', open 2 hrs,
 GTS 10 mins @ 8 MCFCPD,
 MTS 1 hr 57 mins, OTS 1 hr 58 mins,
 rev out 20 BO (gravity 30.) + 150' oil below sub,
 1 hr ISIP 2671#, FP 164-628#,
 2 hr FSIP 2134#.

6-14-65 TD 7284', PBD 7252', tstg.
Perf (Abo) 6846-53', 6874', 6882', 6892',
6906-16', 6942', 6948', 6956-70', 6976',
6986', 7005-16', 7020', 7044', 7060',
7096', 7159-91', 7220' W/1 SPF
Ac. 475 gals.
Swbd 66 BLO in 2 hrs 30 mins,
Re-Ac. 2000 gals.
Flwd 144 BNO/24 hrs thru 19/64" chk., GOR 4700.
Gravity 41.6, TP 500#.
6-21-65 TD 7284', PBD 7252', tstg Abo
Flwd 476 BNO in 72 hrs thru 18/64" chk., TP
450#, GOR 3300.
6-28-65 TD 7284', PBD 7252', WOC on squeeze.
Abo perfs 6846-7096' in communication.
Squeezed perfs 6846-7220' W/250 sx.

7-6-65 TD 7284', PBD 7252', tstg.
Re-Perf (Abo) @ 6876', 6884', 6892', 6906',
6916', 7003', 7014', 7020', 7044', 7060',
7065', 7078', 7087', 7095', 7159', 7192', 7221'
W/2 SPI
Ac. 1750 gals. 7003-7221'.
Ac. 750 gals. 6876-6916'
Had communications thru old perf @ 6853'
Flwd 359 BNO in 83 hrs thru 3/8" chk.,
TP 100#, GOR 1700. 6876-7221'.
7-12-65 TD 7284', PBD 7252', prep to perf Tubb.
Re-Ac. 2000 gals. 7159-7221'
Swbd 60 BNO in 6 hrs 7003-7221'
Re-Ac. 1000 gals. 7003-7221'
Abo complete.

- 7-19-65 TD 7284', PBD 7252', prep to Re-Ac. Tubb.
Perf (Tubb) @ 6120', 6124', 6128', 6142',
6154', 6158', 6162', 6166', 6179', 6187',
6194', 6202', 6208', 6213', 6228', 6240',
6252', 6258', 6264' W/2 SPI
Ac. 500 gals. 6120-6264'
Flwd 273 BNG in 16½ hrs thru 12/64" chk.,
TP 650#, GOR 4060.
Tracer indicated 50%-70% of flow is from
below pkr @ 6680'.
- 7-26-65 TD 7284', PBD 7252', WO Pot. (Tubb)
Re-Ac. 2000 gals. 6120-6264'
Frac 10,000 gals ref oil + 10,000# sd.
6120-6264'
Flwd 4200 MCFGPD + 5 BLO in 24 hrs thru
1/2" chk., TP 600#.
- 8-2-65 TD 7284', PBD 7252', WO Potential (Tubb)
Flwd 860 MCFGPD + 6 BLO + 2 BCond. in 12 hrs
thru 1/4" chk., CP 1125#, TP 1050#. 6120-6264'.
- 8-9-65 TD 7284', PBD 7252', COMPLETED.
TUBB FOUR-POINT TEST:
- | Gas Volume | Time | Choke | TP |
|-------------|------|--------|-------|
| 535 MCFGPD | 1 hr | 11/64" | 1215# |
| 641 MCFGPD | 1 hr | 14/64" | 1100# |
| 905 MCFGPD | 1 hr | 18/64" | 930# |
| 1134 MCFGPD | 1 hr | 24/64" | 756# |

NEW MEXICO OIL CONSERVATION COMMISSION
WELL LOCATION AND ACREAGE DEDICATION PLAT

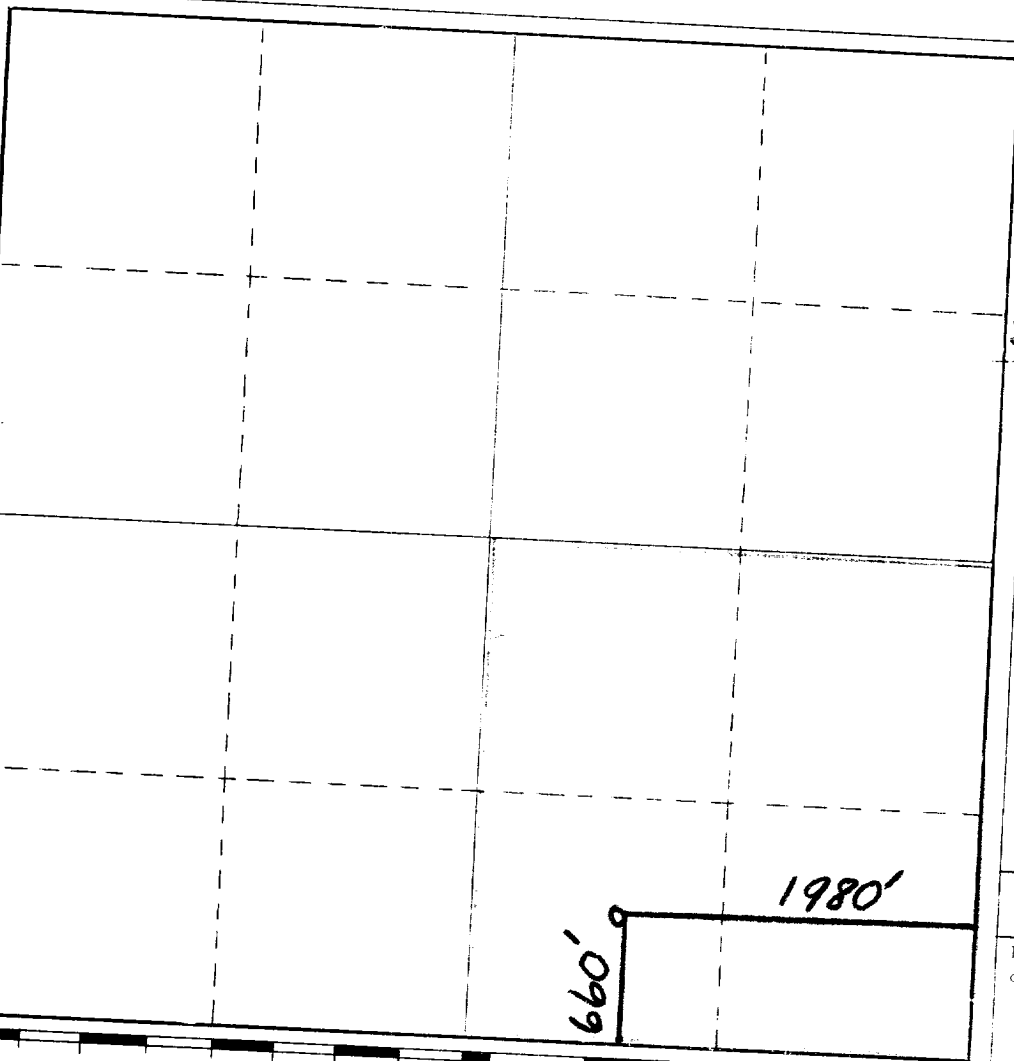
Form C-102
Supersede C-128
Effective 1-1-65

All distances must be from the outer boundaries of the Section.

Operator Sinclair Oil & Gas Company			Lease Sarkeys			Well No. 5	
Unit Letter 0	Section 23	Township 21S	Range 37E	County Lea			
Actual Footage Location of Well: 660 feet from the South line and 1980 feet from the East line							
Ground Level Elev.		Producing Formation Tubb		Pool Tubb (Gas)		Dedicated Acreage: 160 Acres	

- Outline the acreage dedicated to the subject well by colored pencil or hatchure marks on the plat below.
- If more than one lease is dedicated to the well, outline each and identify the ownership thereof (both as to working interest and royalty).
- If more than one lease of different ownership is dedicated to the well, have the interests of all owners been consolidated by communitization, unitization, force-pooling, etc?
☐ Yes ☐ No If answer is "yes," type of consolidation _____

If answer is "no," list the owners and tract descriptions which have actually been consolidated. (Use reverse side of this form if necessary.) _____
 No allowable will be assigned to the well until all interests have been consolidated (by communitization, unitization, forced-pooling, or otherwise) or until a non-standard unit, eliminating such interests, has been approved by the Commission.



CERTIFICATION

I hereby certify that the information contained herein is true and complete to the best of my knowledge and belief.

Name _____

Position _____

Superintendent

Company _____

Sinclair Oil & Gas Co.

Date _____

August 2, 1965

I hereby certify that the well location shown on this plat was plotted from field notes of actual surveys made by me or under my supervision, and that the same is true and correct to the best of my knowledge and belief.

Date Surveyed _____

Registered Professional Engineer and/or Land Surveyor _____

Certificate No. _____