

Submit to Appropriate  
District Office  
State Lease - 6 copies  
Fee Lease - 5 copies

State of New Mexico  
Energy, Minerals and Natural Resources Department

Form C-101  
Revised 1-1-89

OIL CONSERVATION DIVISION

DISTRICT I  
P.O. Box 1980, Hobbs, NM 88240

DISTRICT II  
P.O. Drawer DD, Artesia, NM 88210

DISTRICT III  
1000 Rio Brazos Rd., Aztec, NM 87410

P.O. Box 2088  
Santa Fe, New Mexico 87504-2088

API NO. (assigned by OCD on New Wells)

30-025-21351

5. Indicate Type of Lease

STATE ☐

FEE ☒

6. State Oil & Gas Lease No.

APPLICATION FOR PERMIT TO DRILL, DEEPEN, OR PLUG BACK

1a. Type of Work:

DRILL ☐

RE-ENTER ☐

DEEPEN ☐

PLUG BACK ☒

b. Type of Well:

OIL  
WELL ☐

GAS  
WELL ☒

OTHER

SINGLE  
ZONE ☒

MULTIPLE  
ZONE ☐

7. Lease Name or Unit Agreement Name

NORTHEAST DRINKARD UNIT

2. Name of Operator

SHELL WESTERN E&P INC.

8. Well No.

920\*

3. Address of Operator

P. O. BOX 576, HOUSTON, TX 77001 (WCK 4435)

9. Pool name or Wildcat

TUBB (PRORATED GAS)

4. Well Location

Unit Letter J : 2310 Feet From The SOUTH Line and 1980 Feet From The EAST Line

Section 23

Township

21S

Range

37E

NMPM

LEA

County

10. Proposed Depth

7370' (TD)

11. Formation

TUBB

12. Rotary or C.T.

ROTARY

13. Elevations (Show whether DF, RT, GR, etc.)

3368' GR

14. Kind & Status Plug. Bond

BLANKET

15. Drilling Contractor

WORKOVER RIG

16. Approx. Date Work will start

UPON APPROVAL

17. PROPOSED CASING AND CEMENT PROGRAM

SIZE OF HOLE	SIZE OF CASING	WEIGHT PER FOOT	SETTING DEPTH	SACKS OF CEMENT	EST. TOP
17-1/4"	13-3/8"	48#	382'	400	SURF
11"	8-5/8"	20 & 24#	3209'	1175	275' (TEMP SUR)
7-7/8"	5-1/2" LNR	14 & 15.5#	3052' - 7370'	850	3900' (CBL)

\*CURRENT WELL NAME: S. J. SARKEYS NO. 6. WE PROPOSE TO ABANDON THE WANTZ ABO (AND DRINKARD) AND RECOMPLETE AS A TUBB GAS PRODUCER AS FOLLOWS:

1. POH w/prod equip, scanalog tbg 00H.
2. Mill up retr cmt ret @ 6207'.
3. DO cmt to 6430'.
4. Set CIBP @ 6430' & cap w/35' cmt.
5. Pres tst csg/CIBP to 500#.
6. TIH w/prod string consisting of WL entry guide, 5-1/2" Baker Md1 "R" Pkr & 2-3/8" tbg.
7. Spot 250 gals inhib 15% NEFE HCl from 6390' to ±6120'.
8. Set pkr @ ±6100' & tst to 500#.
9. Perf Tubb 6130' - 6390' (2 JSPF).

(CONT'D ON REVERSE SIDE)

IN ABOVE SPACE DESCRIBE PROPOSED PROGRAM: IF PROPOSAL IS TO DEEPEN OR PLUG BACK, GIVE DATA ON PRESENT PRODUCTIVE ZONE AND PROPOSED NEW PRODUCTIVE ZONE. GIVE BLOWOUT PREVENTER PROGRAM, IF ANY.

I hereby certify that the information above is true and complete to the best of my knowledge and belief.

SIGNATURE

*J. H. Smitherman*

TITLE REGULATORY SUPV.

DATE 1-09-90

TYPE OR PRINT NAME

J. H. SMITHERMAN

(713) 870-3797

TELEPHONE NO.

(This space for State Use)

ORIGINAL SIGNED BY JERRY SEXTON

APPROVED BY

DISTRICT I SUPERVISOR

TITLE

DATE

JAN 19 1990

CONDITIONS OF APPROVAL, IF ANY:

10. RU CO<sub>2</sub> & tst all surf lines to 5000#.
11. Pres backside to 500#.
12. Acdz perfs 6130' - 6390' w/2814 gals 20% HCl + 9786 gals (42 tons) CO<sub>2</sub>.
13. Flow to pit until cln gas is prod. Open prod line to Texaco's gathering system.
14. Once prod has stabilized, perform NMOCD multi-pt tst.

NOTE: Acreage dedication plat enclosed.

Reference "First Supplement - 1988" to the "Initial Plan of Operation" for the Northeast Drinkard Unit dated 4-28-88. This approved wellbore utilization scheme differs from NMOCD Order #R-8539.

Well #920 will be initially tstd in the Tubb followed by the Blinebry (approx 6 months later).

RECEIVED

JAN 10 1990

OCO  
HOBBS OFFICE

Submit to Appropriate  
District Office  
State Lease - 4 copies  
Fee Lease - 3 copies

State of New Mexico  
Energy, Minerals and Natural Resources Department

Form C-102  
Revised 1-1-89

OIL CONSERVATION DIVISION

P.O. Box 2088

Santa Fe, New Mexico 87504-2088

DISTRICT I

P.O. Box 1980, Hobbs, NM 88240

DISTRICT II

P.O. Drawer DD, Artesia, NM 88210

DISTRICT III

1000 Rio Brazos Rd., Aztec, NM 87410

WELL LOCATION AND ACREAGE DEDICATION PLAT

All Distances must be from the outer boundaries of the section

Operator SHELL WESTERN E&P INC.			Lease NORTHEAST DRINKARD UNIT		Well No. 920
Unit Letter J	Section 23	Township 21S	Range 37E	County NMPM	LEA
Actual Footage Location of Well: 2310 feet from the SOUTH line and 1980 feet from the EAST line					
Ground level Elev. 3368' GR	Producing Formation TUBB		Pool TUBB (PRO GAS)	Dedicated Acreage: 160 Acres	

1. Outline the acreage dedicated to the subject well by colored pencil or hachure marks on the plat below.

2. If more than one lease is dedicated to the well, outline each and identify the ownership thereof (both as to working interest and royalty).

3. If more than one lease of different ownership is dedicated to the well, have the interest of all owners been consolidated by communitization, unitization, force-pooling, etc.?



Yes



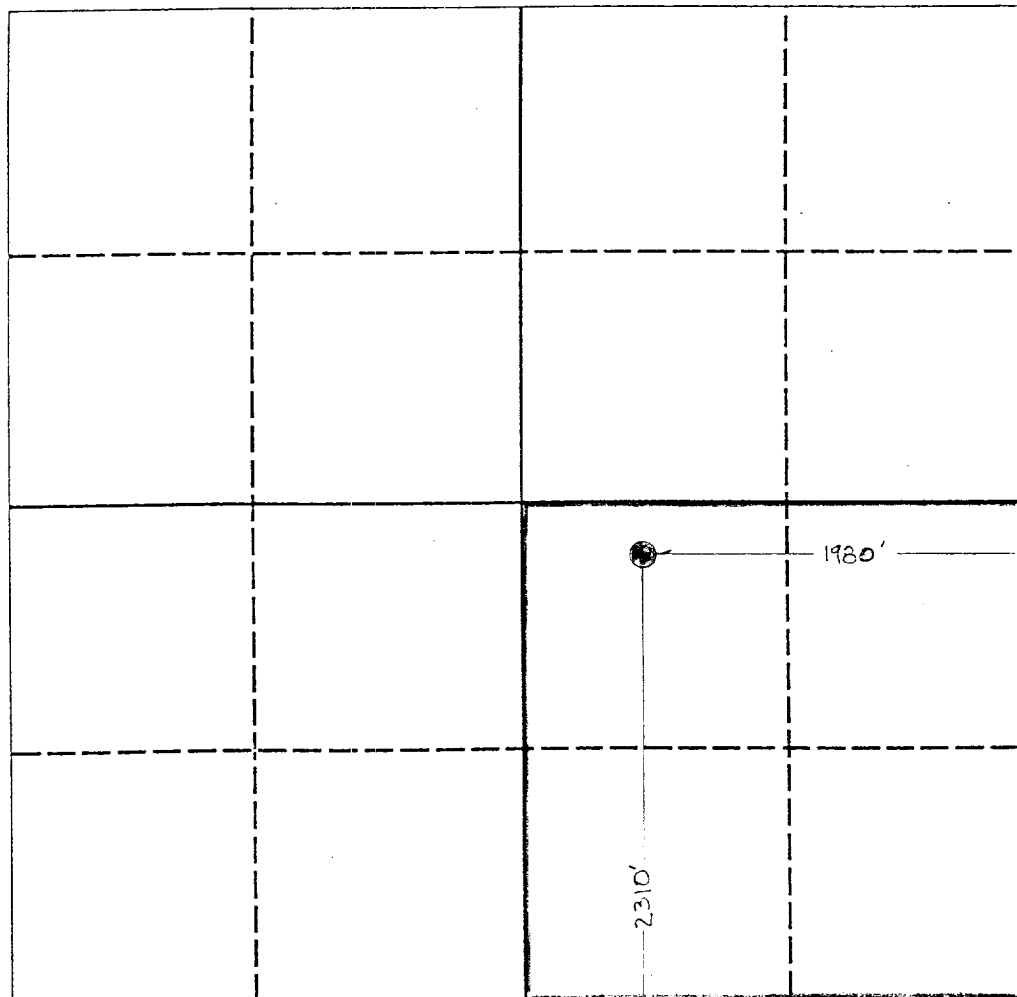
No

If answer is "yes" type of consolidation

UNITIZATION

If answer is "no" list the owners and tract descriptions which have actually been consolidated. (Use reverse side of this form if necessary.)

No allowable will be assigned to the well until all interests have been consolidated (by communitization, unitization, forced-pooling, or otherwise) or until a non-standard unit, eliminating such interest, has been approved by the Division.



OPERATOR CERTIFICATION

I hereby certify that the information contained herein is true and complete to the best of my knowledge and belief.

Signature

Printed Name

J. H. SMITHERMAN

Position

REGULATORY SUPV.

Company

SHELL WESTERN E&P INC.

Date

1-09-90

SURVEYOR CERTIFICATION

I hereby certify that the well location shown on this plat was plotted from field notes of actual surveys made by me or under my supervision, and that the same is true and correct to the best of my knowledge and belief.

Date Surveyed

Signature & Seal of  
Professional Surveyor

Certificate No.