

**NEW MEXICO OIL CONSERVATION COMMISSION
WELL LOCATION AND ACREAGE DEDICATION PLAT**

Form C-102
Supersedes C-128
Effective 1-1-65

All distances must be from the outer boundaries of the Section.

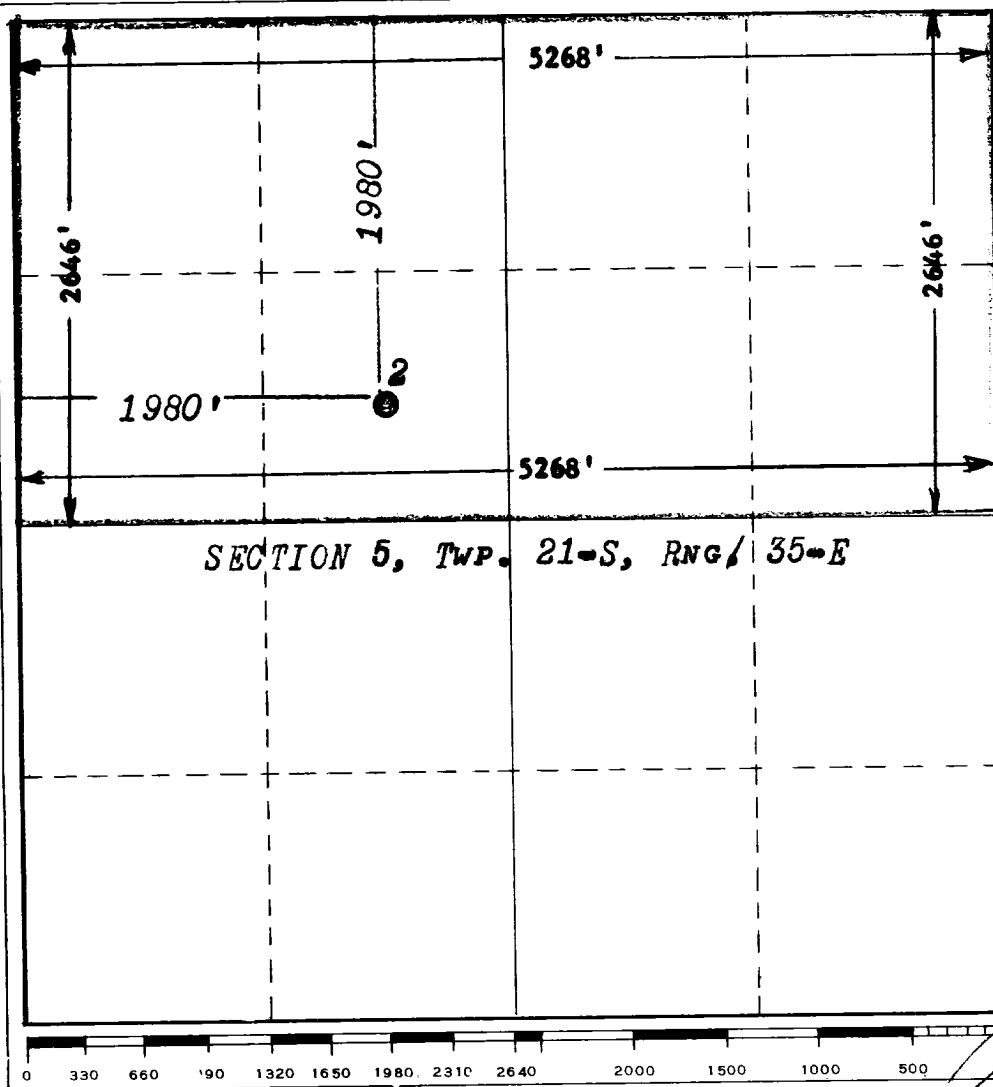
Operator The British-American Oil Producing Co.			Lease North Wilson Deep Unit		Well No. 2
Unit Letter F	Section 5	Township 21-S	Range 35-E	County Lea	
Actual Footage Location of Well: 1980 feet from the North line and 1980 feet from the West line					
Ground Level Elev. 3647	Producing Formation Morrow		Pool Undesignated		Dedicated Acreage: 320 Acres

1. Outline the acreage dedicated to the subject well by colored pencil or hatchure marks on the plat below.
2. If more than one lease is dedicated to the well, outline each and identify the ownership thereof (both as to working interest and royalty).
3. If more than one lease of different ownership is dedicated to the well, have the interests of all owners been consolidated by communitization, unitization, force-pooling, etc?

☒ Yes ☐ No If answer is "yes," type of consolidation **Unitized - Unit No. U-25720**

If answer is "no," list the owners and tract descriptions which have actually been consolidated. (Use reverse side of this form if necessary.) _____

No allowable will be assigned to the well until all interests have been consolidated (by communitization, unitization, forced-pooling, or otherwise) or until a non-standard unit, eliminating such interests, has been approved by the Commission.



CERTIFICATION

I hereby certify that the information contained herein is true and complete to the best of my knowledge and belief.

Name William E. Proff
 Position **District Engineer**
 Company **The British-American Oil Producing Company**
 Date **February 18, 1966**

I hereby certify that the well location shown on this plat was plotted from field notes of actual surveys made by me or under my supervision, and that the same is true and correct to the best of my knowledge and belief.

Date Surveyed **Nov. 24, 1965**
 Registered Professional Engineer and/or Land Surveyor

[Signature]
 Certificate No. **754**

COUNTY LEA FIELD Osmd STATE MN

OPR THE BRITISH-AMERICAN OIL PROPERTIES CO. MAP

2 Wilson North Deep

Sec. 5, T-21-S, R-35-E

1980' FNL. 1980' FWL of Sea.

Spd 12-6-65 CO-ORD

Crp 2-17-66 MN 21718

CSG & SX - TUBING	CLASS			
	FORMATION	DATUM	FORMATION	DATUM
1: 3/8" 362'				
9 5/8" 3236' 2595				
4 1/2" 11628'				

LOGS EL GR RA IND HC A

TP Morrow Perfs 11520-478' CAOP 1820 MFSPE. P.T. based on
 4-point test, gravity (cond.) 39.1.

Distribution limited and publication prohibited by subscribers' agreement.
 Reproduction rights reserved by Williams & Lee Scouting Service, Inc.

CONT. McFarland PROP DEPTH 11850' TYPE RT

DATE

F.R. 12-9-65
 PD 11,850' - Morrow
 Contractor - McFarland
 AMEND WELL NUMBER & LEASE DESIGNATION:
 Formerly #1 Wilson North Deep "A".
 Drig. 3510'.
 Drig. 5090'.
 Drig. 8260'.
 Drig. 10060'.
 DST 9950-10050', open 1 hr 30 mins
 GTS 40 mins @ ISIP.
 Rec 100' oil (Gravity 32.1 + 3.95)
 salt wtr.
 1 hr ISIP 4057#, FP 309-16 1#.
 1 hr FSIP 4057#.

1-17-66 Drlg. 10800'.
DST (Welfcarr) 10364-494', open 2 hrs,
GTS 12 mins @ 350 MCF/GPD decreasing to
TSTM @ end of test,
Rev out 7460 GCO, 1500' free oil
(Gravity 39.4) + 200' OSGCM,
1 hr ISIP 4335#, FP 314-1168#,
1 hr 30 min FSIP 2463#.
1-24-66 TD 11153', lost circ.
1-31-66 TD 11385', prep to drill.
DSI (Morrow Sand) 11236-385', pkrs
failed.
DSI (Morrow Sand) 11236-385', open 3 hrs,
45 mins, Used 3000' WE,
GTS 15 mins, surface choke plugged,

SI 3 hrs to replace choke,
Flwd to pits 30 mins on 1/2" chk.,
SFP 3900#; Flow valve broke &
Flowed uncontrolled for 3 hrs, no
estimate on gas
1 hr ISIP 6170#, FP 4120-4120#,
1 hr FSIP 6170#.
2-7-66 Drlg. 11865'.
2-14-66 TD 11888', PBD 11530', prep to perf.
2-21-66 TD 11888', PBD 11530', WC Potential.
Perf (Morrow) 11320-336', 11347-352',
11380-392', 11406-417', 11471-478'
Natural

3-14-66 WL 11888' FEB 11 1960 COMPLETED.
FOUR POINT TEST

Gas Volume	Inch	IP
2604 MCFEPT	8/64"	4625#
4145 MCFEPT	12/64"	4025#
5590 MCFEPT	16/64"	2950#
6634 MCFEPT	27/64"	2000#

Time not reported on above gauges:
LOI 10PS Delaware Sand 5324' Fine
Spring 7650' 1st Fine Spring Sand
8855' 2nd Fine Spring Sand 9394' 3rd
Fine Spring Sand 10195' Wellcamp
10378' Strata 10591' Atoka 10815'
M. & W. Sand 11340' Barnett 11512'
Missis-sippian 11864'