

NEW MEXICO OIL CONSERVATION COMMISSION
Santa Fe, New Mexico

Form C-101
Revised (12/1/55)

NOTICE OF INTENTION TO DRILL

Notice must be given to the District Office of the Oil Conservation Commission and approval obtained before drilling or recompletion begins. If changes in the proposed plan are considered advisable, a copy of this notice showing such changes will be returned to the sender. Submit this notice in QUINTUPPLICATE. One copy will be returned following approval. See additional instructions in Rules and Regulations of the Commission. If State Land submit 6 Copies Attach Form C-128 in triplicate to first 3 copies of form C-101

(Place)

(Date)

OIL CONSERVATION COMMISSION
SANTA FE, NEW MEXICO

Gentlemen:

You are hereby notified that it is our intention to commence the Drilling of a well to be known as

McElvaney, Kincheloe, & Gross

(Company or Operator)

Phillips State

(Lease)

Well No. 1, in L (Unit) The well is

located 3232.7 feet from the North line and 660 feet from the

West line of Section 2, T. 21 S, R. 34 E, NMPM. (GIVE LOCATION FROM SECTION LINE) Pool, Lea County

Wildcat

If State Land the Oil and Gas Lease is No. E-1921

If patented land the owner is

Address

We propose to drill well with drilling equipment as follows:

Cable Tool

from surface to T. D.

The status of plugging bond is

State Wide \$10,000.00

Drilling Contractor McElvaney, Kincheloe, & Gross

Fred Whitaker

We intend to complete this well in the Seven Rivers Reef formation at an approximate depth of 4000 feet.

CASING PROGRAM

We propose to use the following strings of Casing and to cement them as indicated:

Size of Hole	Size of Casing	Weight per Foot	New or Second Hand	Depth	Sacks Cement
16"	13 3/8	54#	used	Into red beds	100 sx
8"	5 1/2	15.5#	Used	4000'	200 sx

If changes in the above plans become advisable we will notify you immediately.

ADDITIONAL INFORMATION (If recompletion give full details of proposed plan of work.)

CEMENT MUST BE CIRCULATED BEHIND

13 3/8 CASING.

Approved, 19
Except as follows:

Cement must tie back
into

OIL CONSERVATION COMMISSION

By

Sincerely yours,

McElvaney, Kincheloe, Gross

(Company or Operator)

By Dalton Kincheloe

Position partner-operator

Send Communications regarding well to

Name McElvaney, Kincheloe, Gross

Address 859 Petroleum Bldg. Roswell, New Mex 88201

APPROVAL VALID
FOR 90 DAYS UNLESS
DRILLING COMMENCED
EXPIRES 11-5-66

NEW MEXICO OIL CONSERVATION COMMISSION
WELL LOCATION AND ACREAGE DEDICATION PLAT

Form C-102
Supersedes C-128
Effective 1-1-65

All distances must be from the outer boundaries of the Section.

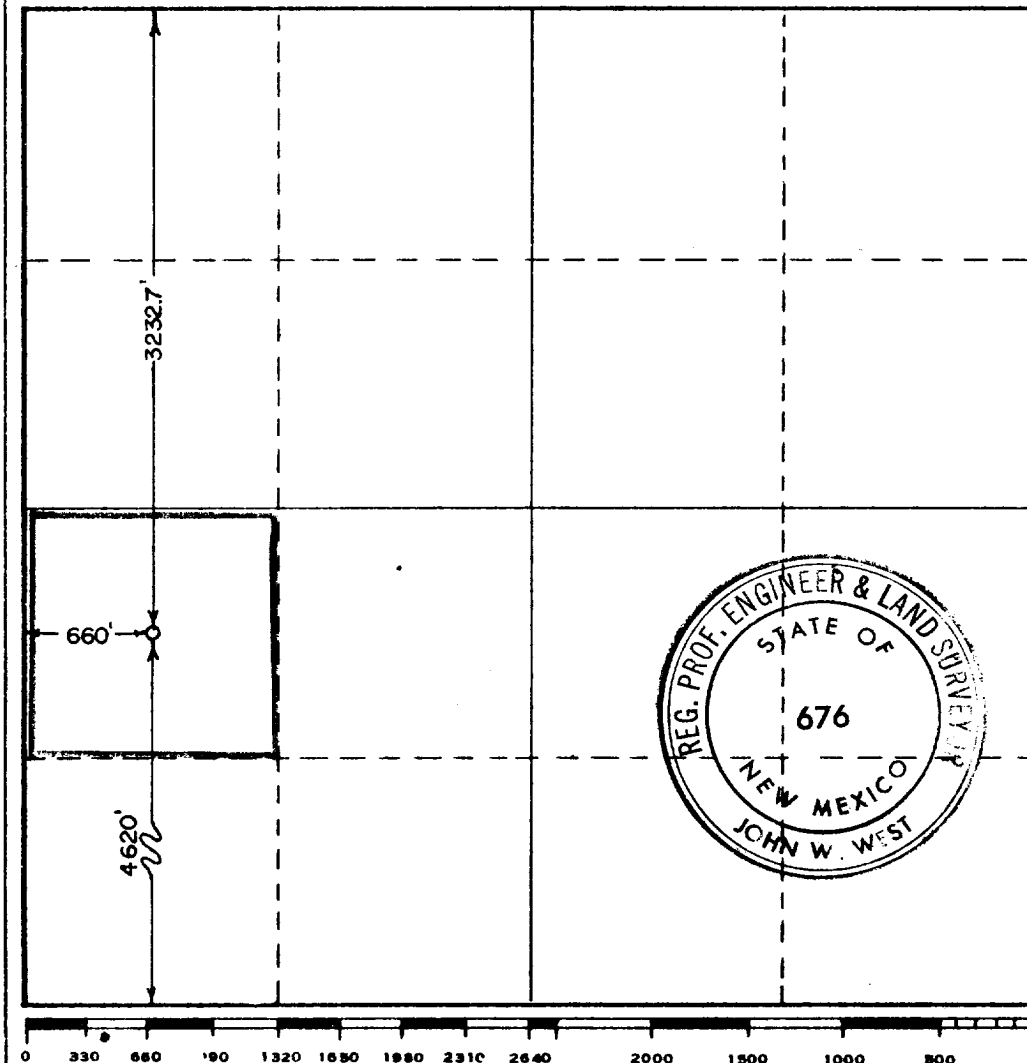
Operator XXXXXXXXXXXXXXXXXXXX Mc Elvaney, Kincheloe, & Gross		Lease PHILLIPS STATE JUL 27 9 19 AM '66		Well No. 1
Unit Letter L	Section 2	Township 21 SOUTH	Range 34 EAST	County LEA
Actual Footage Location of Well: 3232.7 feet from the NORTH line and 660 feet from the WEST line				
Ground Level Elev. 3697.7	Producing Formation 7 Rivers	Pool Wildcat	Dedicated Acreage: 40 Acres	

1. Outline the acreage dedicated to the subject well by colored pencil or hachure marks on the plat below.
2. If more than one lease is dedicated to the well, outline each and identify the ownership thereof (both as to working interest and royalty).
3. If more than one lease of different ownership is dedicated to the well, have the interests of all owners been consolidated by communitization, unitization, force-pooling, etc?

☐ Yes ☐ No If answer is "yes," type of consolidation _____

If answer is "no," list the owners and tract descriptions which have actually been consolidated. (Use reverse side of this form if necessary.) _____

No allowable will be assigned to the well until all interests have been consolidated (by communitization, unitization, forced-pooling, or otherwise) or until a non-standard unit, eliminating such interests, has been approved by the Commission.



CERTIFICATION

I hereby certify that the information contained herein is true and complete to the best of my knowledge and belief.

Name Dalton Kincheloe
Position partner
Company McElvaney, Kincheloe & Gross
Date 7/25/1966

I hereby certify that the well location shown on this plat was plotted from field notes of actual surveys made by me or under my supervision, and that the same is true and correct to the best of my knowledge and belief.

Date Surveyed JULY 20, 1966

Registered Professional Engineer and/or Land Surveyor

John W. West
Certificate No.

N.M. P.E. & L.S. 676