

NO. OF COPIES RECEIVED	
DISTRIBUTION	
DATE	
FILE	
U.S.G.S.	
LAND OFFICE	
OPERATOR	

NEW MEXICO OIL CONSERVATION COMMISSION

Form C-101
Revised 1-1-65

5A. Indicate Type of Lease
STATE ☐ FEE ☒
5. State Oil & Gas Lease No.

APPLICATION FOR PERMIT TO DRILL, DEEPEN, OR PLUG BACK

1a. Type of Work
b. Type of Well DRILL ☐ DEEPEN ☒ PLUG BACK ☐
OIL WELL ☐ GAS WELL ☐ OTHER ☐ SINGLE ZONE ☐ MULTIPLE ZONE ☐
2. Name of Operator
Hanson Oil Corporation
3. Address of Operator
P.O. Box 1515, Roswell, New Mexico 88201
4. Location of Well
UNIT LETTER J LOCATED 1780 FEET FROM THE South LINE
AND 1650 FEET FROM THE East LINE OF SEC. 25 TWP. 21-S RGE. 36-E NMPM

7. Unit Agreement Name
8. Farm or Lease Name
KINGWOOD
9. Well No.
1
10. Field and Pool, or Wildcat
Blinebry
12. County
Lea

18. Proposed Depth 6900
19A. Formation Drinkard
20. Rotary or C.R. Rotary
21. Perforations (show whether DE, RT, etc.) 3546.4
21A. Kind & Status Plug. Bond State Wide
21B. Drilling Contractor Cactus Drlg. Co.
22. Approx. Date Work will start May 1, 1975

PROPOSED CASING AND CEMENT PROGRAM

SIZE OF HOLE	SIZE OF CASING	WEIGHT PER FOOT	SETTING DEPTH	SACKS OF CEMENT	EST. TOP
17 1/2"	12-3/4"	33#	316'	300	Circ.
11"	8-5/8"	24#	2680	250	1830
7-7/8"	5-1/2"	15.5#	5998	450	3060
4-3/4"	3-1/2"	9.3#	6900	45	5998

It is proposed to squeeze off the above well in the Blinebry perf, drill out plug @ 5998' and deepen to a TD of approx. 6900' or to sufficiently test the Drinkard formation. A 3 1/2" liner would then be set from 5998 to 6900' and cemented as indicated above. The well will be perforated and stimulated as conditions require.

7/15/75

IN ABOVE SPACE DESCRIBE PROPOSED PROGRAM: IF PROPOSAL IS TO DEEPEN OR PLUG BACK, GIVE DATA ON PRESENT PRODUCTIVE ZONE AND PROPOSED NEW PRODUCTIVE ZONE. GIVE BLOWOUT PREVENTER PROGRAM, IF ANY.

I hereby certify that the information above is true and complete to the best of my knowledge and belief.

Signed Ray Wells Title Vice President/Production Date April 11, 1975

This space for State Use

APPROVED BY [Signature] TITLE [Signature] DATE [Signature]
CONDITIONS OF APPROVAL, IF ANY:

**NEW MEXICO OIL CONSERVATION COMMISSION
WELL LOCATION AND ACREAGE DEDICATION PLAT**

Form C-100
Supersedes C-75
Effective 1-1-65

All distances must be from the outer boundaries of the Section.

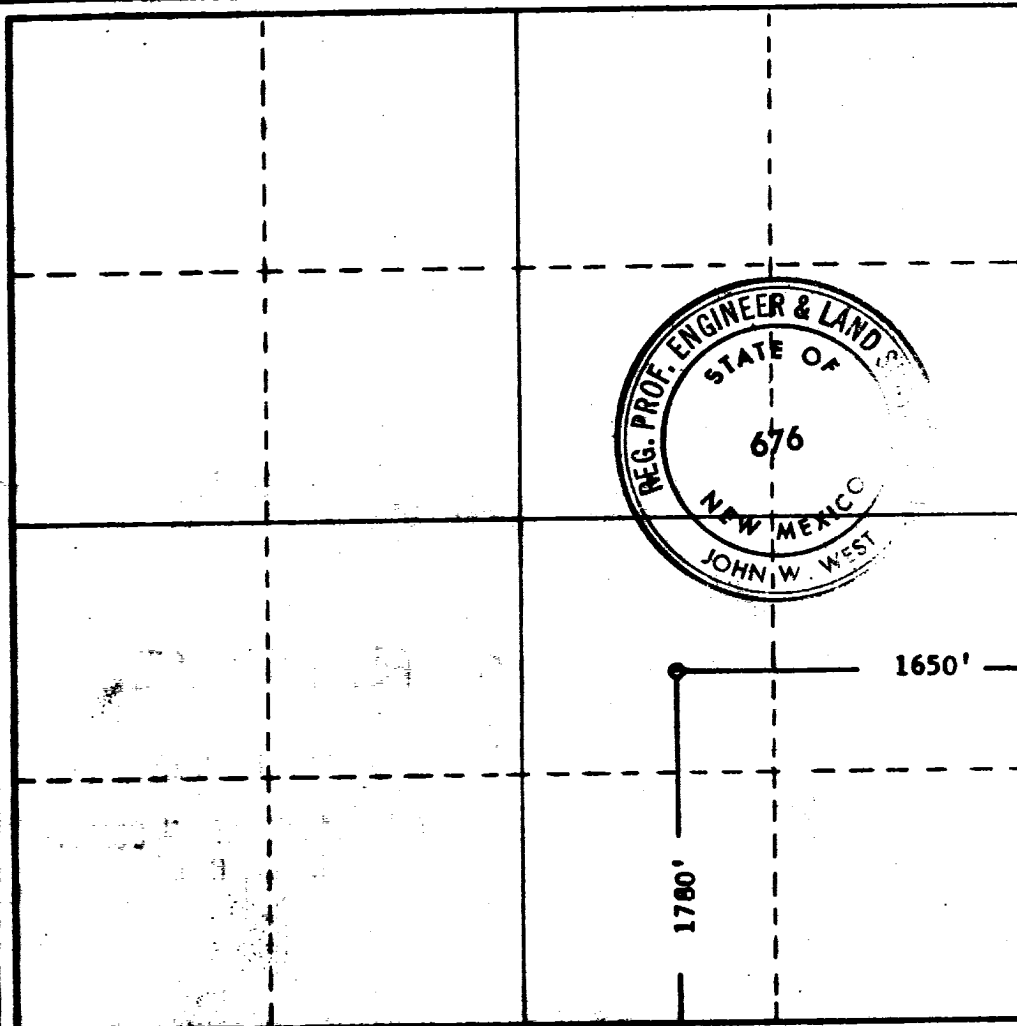
Operator HANSON OIL CORP.			Lease KINGWOOD		Well No. 1
Unit Letter J	Section 25	Township 21 SOUTH	Range 36 EAST	County LEA	
Actual Footage Location of Well: 1780 feet from the SOUTH line and 1650 feet from the EAST line					
Ground Level Elev. 3546.4	Producing Formation Her		Pool Drinkard	Dedicated Acreage 40	Acres

1. Outline the acreage dedicated to the subject well by colored pencil or hatchure marks on the plat below.
2. If more than one lease is dedicated to the well, outline each and identify the ownership thereof (both as to working interest and royalty).
3. If more than one lease of different ownership is dedicated to the well, have the interests of all owners been consolidated by communitization, unitization, force-pooling, etc?

☐ Yes ☐ No If answer is "yes," type of consolidation _____

If answer is "no," list the owners and tract descriptions which have actually been consolidated. (Use reverse side of this form if necessary.) _____

No allowable will be assigned to the well until all interests have been consolidated (by communitization, unitization, forced-pooling, or otherwise) or until a non-standard unit, eliminating such interests, has been approved by the Commission.



CERTIFICATION

I hereby certify that the information contained herein is true and complete to the best of my knowledge and belief.

Name Ray Williams
 Position Vice President/Production
 Company Hanson Oil Corporation
 Date April 11, 1975

I hereby certify that the well location shown on this plat was plotted from field notes of actual surveys made by me or under my supervision, and that the same is true and correct to the best of my knowledge and belief.

Date Surveyed 2-15-1971
 Registered Professional Engineer and/or Land Surveyor

John W. West
 Certificate No. 676



RECEIVED

APR 1 1976

U.S. CONSERVATION COMM.
WASH, D. C.