

NEW MEXICO OIL CONSERVATION COMMISSION
WELL LOCATION AND ACREAGE DEDICATION PLAT

Form C-102
Supersedes C-128
Effective 1-1-65

All distances must be from the outer boundaries of the Section

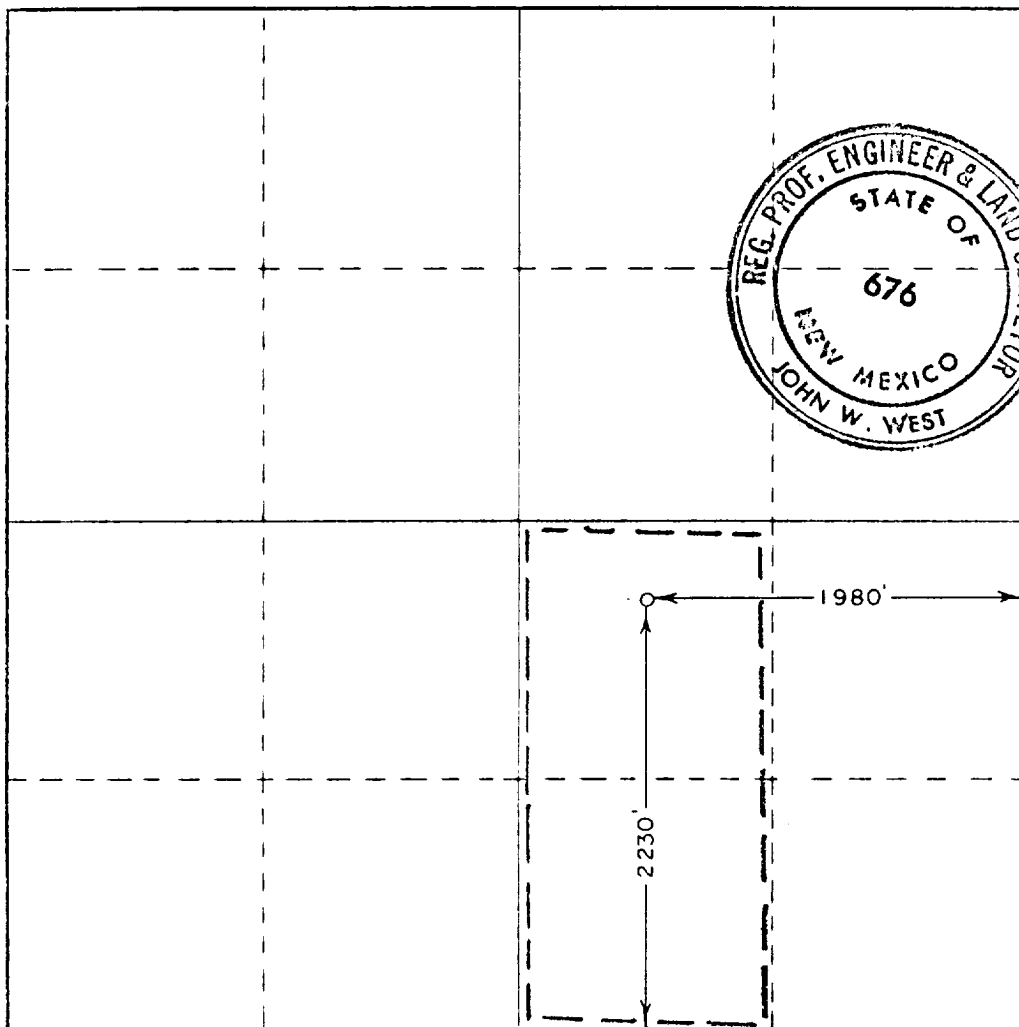
| | | | | |
|--|--|------------------------------------|---------------------------------------|-----------------------|
| Operator CONTINENTAL OIL CO. | | Lease MEYER B-4 | | Well No. 28 |
| Unit Letter #R | Section 4 | Township 21 SOUTH | Range 36 EAST | County LEA |
| Actual Footage Location of Well: 2230 feet from the SOUTH line and 1980 feet from the EAST line | | | | |
| Ground Level Elev. 3576' | Producing Formation Blinobry | Pool oil Center Blinobry | Dedicated Acreage 80 W/# 23 | |

1. Outline the acreage dedicated to the subject well by colored pencil or hachure marks on the plat below.
2. If more than one lease is dedicated to the well, outline each and identify the ownership thereof (both as to working interest and royalty).
3. If more than one lease of different ownership is dedicated to the well, have the interests of all owners been consolidated by communitization, unitization, force-pooling, etc?

☐ Yes ☐ No If answer is "yes," type of consolidation _____

If answer is "no," list the owners and tract descriptions which have actually been consolidated. (Use reverse side of this form if necessary.) _____

No allowable will be assigned to the well until all interests have been consolidated (by communitization, unitization, forced-pooling, or otherwise) or until a non-standard unit, eliminating such interests, has been approved by the Commission.



CERTIFICATION

I hereby certify that the information contained herein is true and complete to the best of my knowledge and belief.

John W. West
Admin Supervisor
Continental Oil Co
March 27, 1972

I hereby certify that the well location shown on this plat was plotted from field notes of actual surveys made by me or under my supervision, and that the same is true and correct to the best of my knowledge and belief.

Date Surveyed

OCTOBER 8, 1971

Registered Professional Engineer
and Land Surveyor

John W. West
Certificate No. **676**