

NO. OF COPIES RECEIVED		
DISTRIBUTION		
SANTA FE		
FILE		
U.S.G.S.		
LAND OFFICE		
OPERATOR		

# NEW MEXICO OIL CONSERVATION COMMISSION

Form C-101  
Revised 1-1-65

5A. Indicate Type of Lease  
STATE ☐ FEE ☒

5. State Oil & Gas Lease No.

## APPLICATION FOR PERMIT TO DRILL, DEEPEN, OR PLUG BACK

a. Type of Work

DRILL ☐

DEEPEN ☐

PLUG BACK ☒

b. Type of Well

OIL WELL ☒

GAS WELL ☐

OTHER

SINGLE ZONE ☒

MULTIPLE ZONE ☐

c. Name of Operator

Hanson Operating Company, Inc.

d. Address of Operator

P. O. Box 1515, Roswell, New Mexico 88202-1515

e. Location of Well

UNIT LETTER 0 LOCATED 660 FEET FROM THE South LINE

WD 1650 FEET FROM THE East LINE OF SEC. 25 TWP. 21S RGE. 36E NMPM

7. Unit Agreement Name

8. Farm or Lease Name

Kingwood

9. Well No.

2

10. Field and Pool, or Wildcat

Blinbry *Hanson Skelly*

12. County

Lea

1. Elevations (Show whether DF, RT, etc.)

3525' GR

21A. Kind & Status Plug. Bond

N/A

19. Proposed Depth

N/A

19A. Formation

Grayburg

20. Rotary or C.T.

N/A

21B. Drilling Contractor

N/A

22. Approx. Date Work will start

July 15, 1988

3.

## PROPOSED CASING AND CEMENT PROGRAM

SIZE OF HOLE	SIZE OF CASING	WEIGHT PER FOOT	SETTING DEPTH	SACKS OF CEMENT	EST. TOP
17-1/2"	12-3/4"	48#	316'	375	
11"	8-5/8"	24# & 32#	2670'	320	
7-7/8"	5-1/2"	15.5# & 17#	6000'	800	

It is proposed to isolate the existing Blinbry perforations (5539-5928') by setting a RBP @ 3900' -. The Grayburg formation will then be perforated from 3713-3775' with 27 holes. The Grayburg perforations will be acidized and fracture stimulated as needed. The well will be swab tested and put back on production.

ABOVE SPACE DESCRIBE PROPOSED PROGRAM: IF PROPOSAL IS TO DEEPEN OR PLUG BACK, GIVE DATA ON PRESENT PRODUCTIVE ZONE AND PROPOSED NEW PRODUCTION ZONE. GIVE BLOWOUT PREVENTER PROGRAM, IF ANY.

I hereby certify that the information above is true and complete to the best of my knowledge and belief.

Signed Bruce L. Godfrey Title Production Analyst Date 05/12/88

ORIGINAL SIGNED BY JERRY SEXTON  
DISTRICT 1 SUPERVISOR

APPROVED BY \_\_\_\_\_ TITLE \_\_\_\_\_ DATE \_\_\_\_\_

CONDITIONS OF APPROVAL, IF ANY:

Permit Expires 6 Months From Approval  
Date Unless Drilling Underway.  
*workover*

MAY 16 1988

RECEIVED  
MAY 13 1988  
OCD  
HOBBS OFFICE

N MEXICO OIL CONSERVATION COMMIS.  
WELL LOCATION AND ACREAGE DEDICATION PLAT

Form C-102  
Supersedes C-128  
Effective 1-1-65

All distances must be from the outer boundaries of the Section

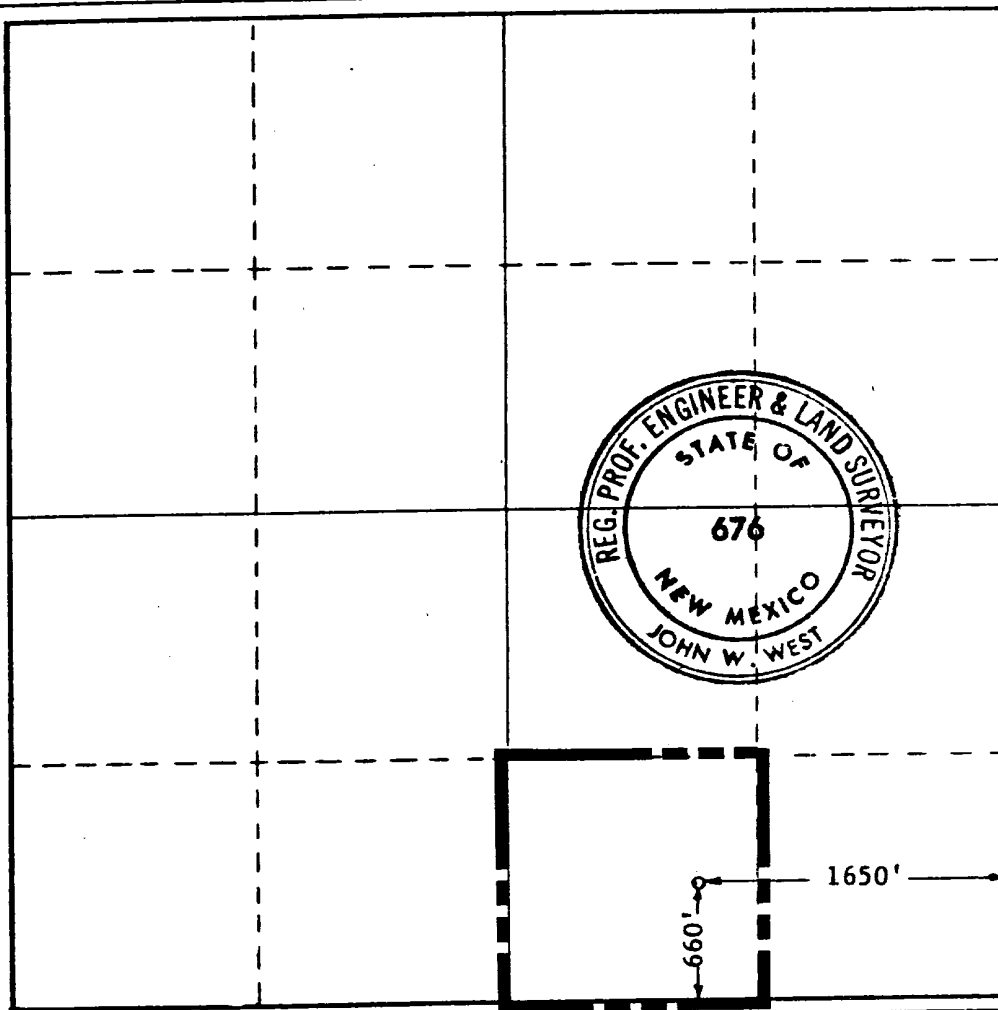
Operator <b>HANSON OIL CORP.</b>			Lease <b>KINGWOOD</b>		Well No. <b>2</b>
Unit Letter <b>O</b>	Section <b>25</b>	Township <b>21 SOUTH</b>	Range <b>36 EAST</b>	County <b>LEA</b>	
Actual Footage Location of Well: <b>660</b> feet from the <b>SOUTH</b> line and <b>1650</b> feet from the <b>EAST</b> line					
Ground Level Elev. <b>3525.3</b>	Producing Formation <b>Blinberry GB</b>		Pool <b>Blinberry Lease Skelly</b>	Dedicated Acreage: <b>40</b> Acres	

1. Outline the acreage dedicated to the subject well by colored pencil or hachure marks on the plat below.
2. If more than one lease is dedicated to the well, outline each and identify the ownership thereof (both as to working interest and royalty).
3. If more than one lease of different ownership is dedicated to the well, have the interests of all owners been consolidated by communitization, unitization, force-pooling, etc?

☐ Yes ☐ No If answer is "yes," type of consolidation \_\_\_\_\_

If answer is "no," list the owners and tract descriptions which have actually been consolidated. (Use reverse side of this form if necessary.) \_\_\_\_\_

No allowable will be assigned to the well until all interests have been consolidated (by communitization, unitization, forced-pooling, or otherwise) or until a non-standard unit, eliminating such interests, has been approved by the Commission.



**CERTIFICATION**

I hereby certify that the information contained herein is true and complete to the best of my knowledge and belief.

Name Reagan Sweet  
Reagan Sweet  
Position Manager  
Company Hanson Oil Corporation  
Date November 11, 1971

I hereby certify that the well location shown on this plat was plotted from field notes of actual surveys made by me or under my supervision, and that the same is true and correct to the best of my knowledge and belief.

Date Surveyed NOVEMBER 9, 1971  
Registered Professional Engineer and/or Land Surveyor

John W. West  
Certificate No. **676**

RECEIVED

MAY 13 1988

OCD  
HOBBS OFFICE