

NO. OF COPIES RECEIVED

## NEW MEXICO OIL CONSERVATION COMMISSION

Form C-101  
Revised 1-1-65

## DISTRIBUTION

SANTA FE

FILE

U.S.G.S.

LAND OFFICE

OPERATOR

5A. Indicate Type of Lease

STATE ☒FEE ☐

5. State Oil &amp; Gas Lease No.

B-1732

## APPLICATION FOR PERMIT TO DRILL, DEEPEN, OR PLUG BACK

7. Unit Agreement Name

8. Farm or Lease Name

Harry Leonard (NCT-C)

9. Well No.

13

10. Field and Pool, or Wildcat

Blinebry

12. County

Lea

1a. Type of Work

DRILL ☒DEEPEN ☐PLUG BACK ☐

b. Type of Well

OIL  
WELL ☒GAS  
WELL ☐

OTHER

SINGLE  
ZONE ☐MULTIPLE  
ZONE ☐

2. Name of Operator

Gulf Oil Corporation

3. Address of Operator

Box 670, Hobbs, New Mexico 88240

4. Location of Well

UNIT LETTER B LOCATED 510 FEET FROM THE North LINE

AND 1780

FEET FROM THE East LINE OF SEC. 36 TWP. 21-S RGE. 36-E NMPM

21. Elevations (Show whether DF, RT, etc.)

21A. Kind &amp; Status Plug. Bond

Blanket

19. Proposed Depth

6000'

19A. Formation

Blinebry

20. Rotary or C.T.

Rotary

22. Approx. Date Work will start

23.

## PROPOSED CASING AND CEMENT PROGRAM

SIZE OF HOLE	SIZE OF CASING	WEIGHT PER FOOT	SETTING DEPTH	SACKS OF CEMENT	EST. TOP
11"	8-5/8"	24#	1250'	Circulate	
7-7/8"	5-1/2"	15.5#	6000'	Base of Salt	

THE COMPLETION MUST BE NOTIFIED  
24 HOURS PRIOR TO RUNNING  
CASING.

APPROVAL VALID  
FOR 90 DAYS UNLESS  
DRILLING COMMENCED,

EXPIRES 4-19-72

IN ABOVE SPACE DESCRIBE PROPOSED PROGRAM: IF PROPOSAL IS TO DEEPEN OR PLUG BACK, GIVE DATA ON PRESENT PRODUCTIVE ZONE AND PROPOSED NEW PRODUCTIVE ZONE. GIVE BLOWOUT PREVENTER PROGRAM, IF ANY.

I hereby certify that the information above is true and complete to the best of my knowledge and belief.

ORIGINAL SIGNED BY

C. D. BORLAND

Title Area Production Manager

Date January 18, 1972

(This space for State Use)

APPROVED BY

TITLE SUPERVISOR DISTRICT 1

DATE JAN 19 1972

CONDITIONS OF APPROVAL, IF ANY:

RECEIVED

JAN 1 1972

OIL CONSERVATION COM. 1972, P. 16

**NEW MEXICO OIL CONSERVATION COMMISSION  
WELL LOCATION AND ACREAGE DEDICATION PLAT**

Form C-102  
Supersedes C-128  
Effective 1-1-65

All distances must be from the outer boundaries of the Section

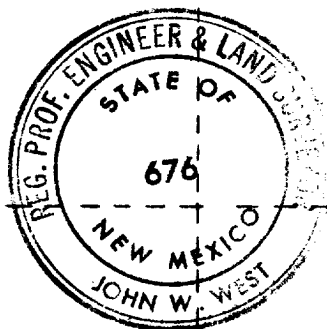
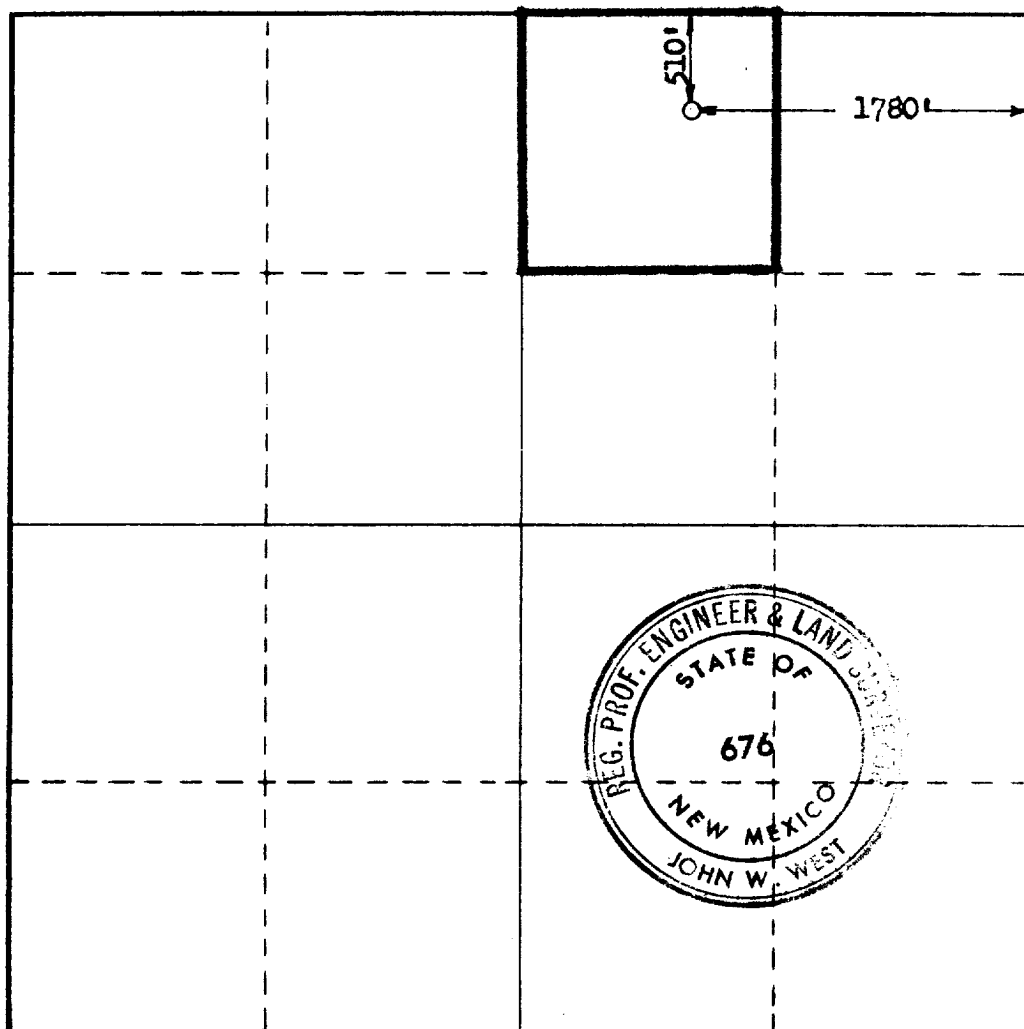
Operator <b>GULF OIL CORP.</b>			Lease <b>HARRY LEONARD NCT "C"</b>		Well No. <b>13</b>
Unit Letter <b>B</b>	Section <b>36</b>	Township <b>21 SOUTH</b>	Range <b>36 EAST</b>	County <b>LEA</b>	
Actual Footage Location of Well: <b>1780</b> feet from the <b>EAST</b> line and <b>510</b> feet from the <b>NORTH</b> line					
Ground Level Elev.	Producing Formation <b>Blinebry</b>		Pool <b>Blinebry</b>		Dedicated Acreage: <b>40</b> Acres

1. Outline the acreage dedicated to the subject well by colored pencil or hachure marks on the plat below.
2. If more than one lease is dedicated to the well, outline each and identify the ownership thereof (both as to working interest and royalty).
3. If more than one lease of different ownership is dedicated to the well, have the interests of all owners been consolidated by communitization, unitization, force-pooling, etc?

☐ Yes    ☐ No    If answer is "yes," type of consolidation \_\_\_\_\_

If answer is "no," list the owners and tract descriptions which have actually been consolidated. (Use reverse side of this form if necessary.) \_\_\_\_\_

No allowable will be assigned to the well until all interests have been consolidated (by communitization, unitization, forced-pooling, or otherwise) or until a non-standard unit, eliminating such interests, has been approved by the Commission.



**CERTIFICATION**

I hereby certify that the information contained herein is true and complete to the best of my knowledge and belief.

**ORIGINAL SIGNED BY**

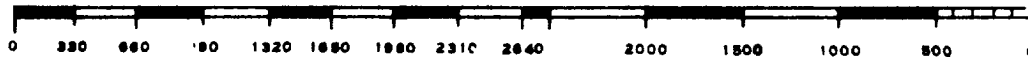
Name **C. D. BORLAND**  
**C. D. BORLAND**  
 Position  
**Area Production Manager**  
 Company  
**Gulf Oil Corporation**  
 Date  
**January 18, 1972**

I hereby certify that the well location shown on this plat was plotted from field notes of actual surveys made by me or under my supervision, and that the same is true and correct to the best of my knowledge and belief.

Date Surveyed  
**JANUARY 13, 1972**

Registered Professional Engineer and/or Land Surveyor

*John W. West*  
 Certificate No. **676**



RECEIVED

JAN 11 1972

OIL CONSERVATION COMM.  
HOBBBS, E. D.

173

173