

| | | |
|------------------------|--|--|
| NO. OF COPIES RECEIVED | | |
| DISTRIBUTION | | |
| SANTA FE | | |
| FILE | | |
| U.S.G.S. | | |
| LAND OFFICE | | |
| OPERATOR | | |

NEW MEXICO OIL CONSERVATION COMMISSION

Form C-101
Revised 1-1-65

| | |
|---|------------------------------|
| 5A. Indicate Type of Lease | |
| STATE <input checked="" type="checkbox"/> | FEE <input type="checkbox"/> |
| 5. State Oil & Gas Lease No. | |
| B-1732 | |

APPLICATION FOR PERMIT TO DRILL, DEEPEN, OR PLUG BACK

| | | | |
|---|--|----------------------------------|--|
| 1a. Type of Work | | 7. Unit Agreement Name | |
| b. Type of Well DRILL <input checked="" type="checkbox"/> DEEPEN <input type="checkbox"/> PLUG BACK <input type="checkbox"/> | | 8. Farm or Lease Name | |
| OIL WELL <input checked="" type="checkbox"/> GAS WELL <input type="checkbox"/> OTHER <input type="checkbox"/> | | Harry Leonard (NCT-C) | |
| 2. Name of Operator | | 9. Well No. | |
| Gulf Oil Corporation | | 14 | |
| 3. Address of Operator | | 10. Field and Pool, or Wildcat | |
| Box 670, Hobbs, New Mexico 88240 | | Blinebry | |
| 4. Location of Well | | 12. County | |
| UNIT LETTER <u>H</u> LOCATED <u>1830</u> FEET FROM THE <u>North</u> LINE | | Lea | |
| AND <u>910</u> FEET FROM THE <u>East</u> LINE OF SEC. <u>36</u> TWP. <u>21-S</u> RGE. <u>36-E</u> NMPM | | | |
| 19. Proposed Depth | | 19A. Formation | |
| 6000' | | Blinebry | |
| 20. Rotary or C.T. | | Rotary | |
| 21. Elevations (Show whether DF, RT, etc.) | | 22. Approx. Date Work will start | |
| 21A. Kind & Status Plug. Bond | | 21B. Drilling Contractor | |
| Blanket | | | |

PROPOSED CASING AND CEMENT PROGRAM

| SIZE OF HOLE | SIZE OF CASING | WEIGHT PER FOOT | SETTING DEPTH | SACKS OF CEMENT | EST. TOP |
|--------------|----------------|-----------------|---------------|-----------------|----------|
| 11" | 8-5/8" | 24# | 1250' | Circulate | |
| 7-7/8" | 5-1/2" | 15.5# | 6000' | Base of Salt | |

THE COMMISSION MUST BE NOTIFIED
24 HRS. PRIOR TO DRILLING
CASING.

APPROVAL VALID
FOR 30 DAYS UNLESS
DRILLING COMMENCED,

EXPIRES 4-19-72

IN ABOVE SPACE DESCRIBE PROPOSED PROGRAM; IF PROPOSAL IS TO DEEPEN OR PLUG BACK, GIVE DATA ON PRESENT PRODUCTIVE ZONE AND PROPOSED NEW PRODUCTIVE ZONE. GIVE BLOWOUT PREVENTER PROGRAM, IF ANY.

I hereby certify that the information above is true and complete to the best of my knowledge and belief.

ORIGINAL SIGNED BY
Signed C. D. BORLAND Title Area Production Manager Date January 18, 1972

(This space for State Use)
APPROVED BY [Signature] TITLE SUPERVISOR DISTRICT 1 DATE JAN 19 1972
CONDITIONS OF APPROVAL, IF ANY:

NEW MEXICO OIL CONSERVATION COMMISSION
WELL LOCATION AND ACREAGE DEDICATION PLAT

Form C-102
Supersedes C-128
Effective 1-1-65

All distances must be from the outer boundaries of the Section.

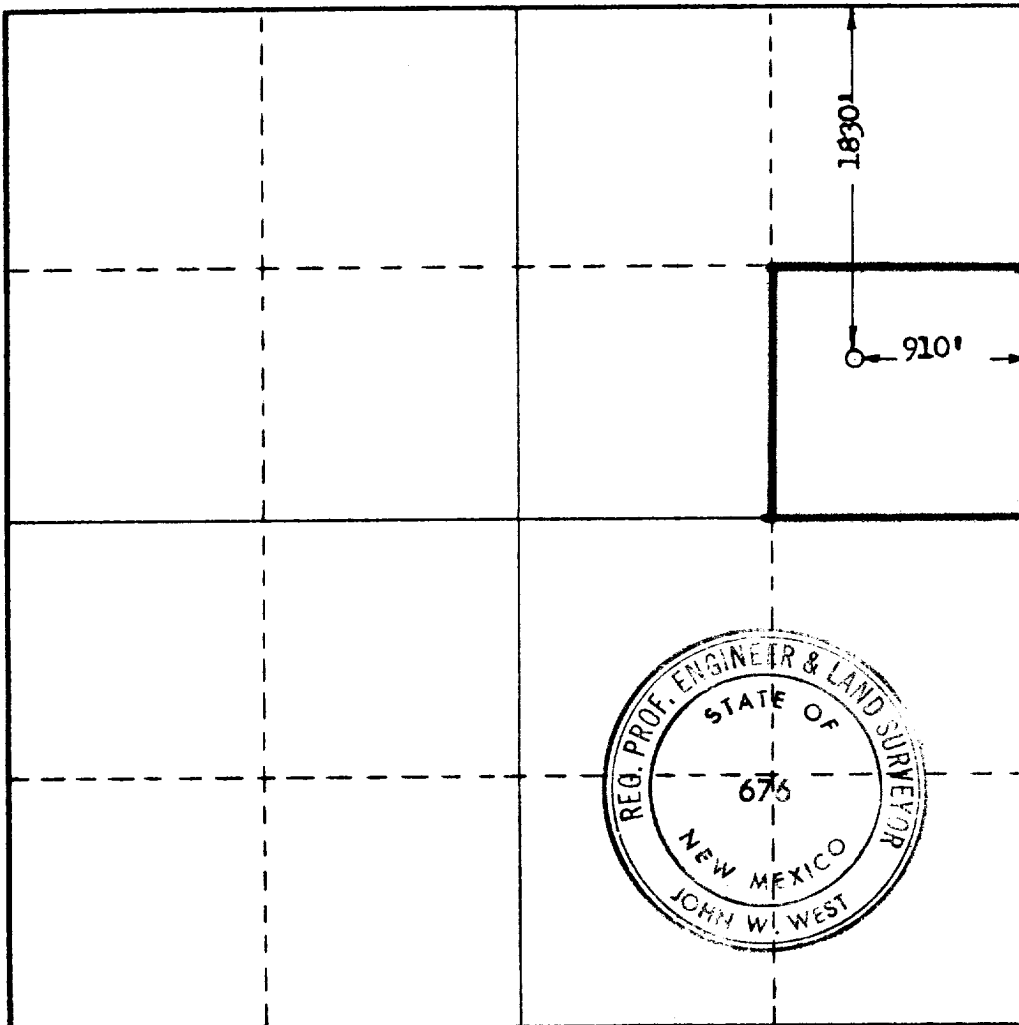
| | | | | | | | | |
|---|---------------------------------------|-----------------------------|---------------------------------------|----------------------|---------------------------------------|-----------------------|--|--|
| Operator GULF OIL CORP. | | | Lease HARRY LEONARD NCT "C" | | | Well No. 14 | | |
| Unit Letter H | Section 36 | Township 21 SOUTH | Range 36 EAST | County LEA | | | | |
| Actual Footage Location of Well: 1830 feet from the NORTH line and 910 feet from the EAST line | | | | | | | | |
| Ground Level Elev. | Producing Formation Blinbry | | Pool Blinbry | | Dedicated Acreage: 40 Acres | | | |

1. Outline the acreage dedicated to the subject well by colored pencil or hachure marks on the plat below.
2. If more than one lease is dedicated to the well, outline each and identify the ownership thereof (both as to working interest and royalty).
3. If more than one lease of different ownership is dedicated to the well, have the interests of all owners been consolidated by communitization, unitization, force-pooling, etc?

☐ Yes ☐ No If answer is "yes," type of consolidation _____

If answer is "no," list the owners and tract descriptions which have actually been consolidated. (Use reverse side of this form if necessary.) _____

No allowable will be assigned to the well until all interests have been consolidated (by communitization, unitization, forced-pooling, or otherwise) or until a non-standard unit, eliminating such interests, has been approved by the Commission.



CERTIFICATION

I hereby certify that the information contained herein is true and complete to the best of my knowledge and belief.

ORIGINAL SIGNED BY
G. D. BORLAND

Name
G. D. BORLAND
Position
Area Production Manager
Company
Gulf Oil Corporation

Date
January 18, 1972

I hereby certify that the well location shown on this plat was plotted from field notes of actual surveys made by me or under my supervision, and that the same is true and correct to the best of my knowledge and belief.

Date Surveyed
JANUARY 13, 1972

Registered Professional Engineer and/or Land Surveyor

John W. West

Certificate No. **676**

0 320 640 960 1280 1600 1920 2240 2560 2880 3200 3520 3840 4160 4480 4800 5120 5440 5760 6080 6400

RECEIVED

JAN 15 1974

OIL CONSERVATION COMM.
HOODS, H. D.

113