

NO. OF COPIES RECEIVED		
DISTRIBUTION		
SANTA FE		
FILE		
U.S.G.S.		
LAND OFFICE		
OPERATOR		

NEW MEXICO OIL CONSERVATION COMMISSION

Form C-101
Revised 1-1-65

5A. Indicate Type of Lease

STATE ☒ FEE ☐

5. State Oil & Gas Lease No.

B-1732

APPLICATION FOR PERMIT TO DRILL, DEEPEN, OR PLUG BACK

1a. Type of Work

DRILL ☒ DEEPEN ☐ PLUG BACK ☐

b. Type of Well

OIL WELL ☒ GAS WELL ☐ OTHER ☐ SINGLE ZONE ☐ MULTIPLE ZONE ☐

2. Name of Operator

Gulf Oil Corporation

3. Address of Operator

Box 670, Hobbs, New Mexico 88240

4. Location of Well

UNIT LETTER K LOCATED 1980 FEET FROM THE South LINE

AND 2240 FEET FROM THE West LINE OF SEC. 36 TWP. 21-S RGE. 36-E NMPM

7. Unit Agreement Name

8. Farm or Lease Name

Harry Leonard (NCT-C)

9. Well No.

16

10. Field and Pool or Wildcat
Blaineby

12. County

Lea

19. Proposed Depth

6000'

19A. Formation

Blaineby

20. Rotary or C.T.

Rotary

21. Elevations (Show whether DF, RT, etc.)

21A. Kind & Status Plug. Bond

Blanket

21B. Drilling Contractor

22. Approx. Date Work will start

May 25, 1972

23.

PROPOSED CASING AND CEMENT PROGRAM

SIZE OF HOLE	SIZE OF CASING	WEIGHT PER FOOT	SETTING DEPTH	SACKS OF CEMENT	EST. TOP
11"	8-5/8"	24#	1250'	Circulate	
7-7/8"	5-1/2"	15.5#	6000'	Base of Salt	

APPROVAL VALID
FOR 30 DAYS UNLESS
BEGINNING COMMENCED,

EXPIRES 8-23-72

IN ABOVE SPACE DESCRIBE PROPOSED PROGRAM: IF PROPOSAL IS TO DEEPEN OR PLUG BACK, GIVE DATA ON PRESENT PRODUCTIVE ZONE AND PROPOSED NEW PRODUCTIVE ZONE. GIVE BLOWOUT PREVENTER PROGRAM, IF ANY.

I hereby certify that the information above is true and complete to the best of my knowledge and belief.

Signed [Signature] Title Area Production Manager Date May 22, 1972

(This space for State Use)

APPROVED BY

TITLE SUPERVISOR DISTRICT I

DATE MAY 23 1972

CONDITIONS OF APPROVAL, IF ANY:

RECEIVED

MAY 22 1972

OIL CONSERVATION COMM.
HOBBS, N. M.

**NEW MEXICO OIL CONSERVATION COMMISSION
WELL LOCATION AND ACREAGE DEDICATION PLAT**

Form C-102
Supersedes C-128
Effective 1-1-65

All distances must be from the outer boundaries of the Section.

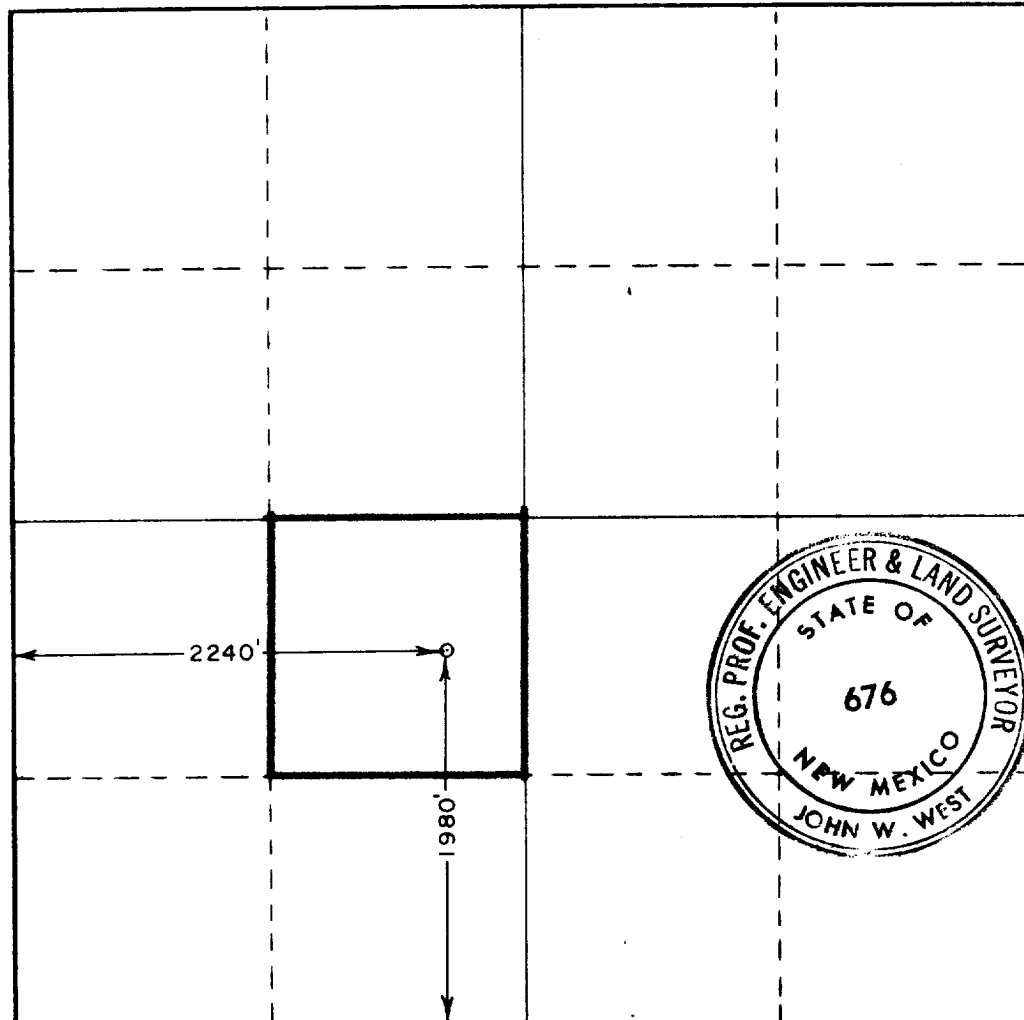
Operator GULF OIL CORP.			Lease HARRY LEONARD NCT-C		Well No. 16
Unit Letter K	Section 36	Township 21 SOUTH	Range 36 EAST	County LEA	
Actual Footage Location of Well: 1980 feet from the SOUTH line and 2240 feet from the WEST line					
Ground Level Elev.	Producing Formation Blinebry		Pool Blinebry		Dedicated Acreage: 40 Acres

1. Outline the acreage dedicated to the subject well by colored pencil or hachure marks on the plat below.
2. If more than one lease is dedicated to the well, outline each and identify the ownership thereof (both as to working interest and royalty).
3. If more than one lease of different ownership is dedicated to the well, have the interests of all owners been consolidated by communitization, unitization, force-pooling, etc?

☐ Yes ☐ No If answer is "yes," type of consolidation _____

If answer is "no," list the owners and tract descriptions which have actually been consolidated. (Use reverse side of this form if necessary.) _____

No allowable will be assigned to the well until all interests have been consolidated (by communitization, unitization, forced-pooling, or otherwise) or until a non-standard unit, eliminating such interests, has been approved by the Commission.



CERTIFICATION

I hereby certify that the information contained herein is true and complete to the best of my knowledge and belief.

ORIGINAL SIGNED BY

G. D. BORLAND

Name
C. D. BORLAND
Position
Area Production Manager
Company
Gulf Oil Corporation

Date
May 22, 1972

I hereby certify that the well location shown on this plat was plotted from field notes of actual surveys made by me or under my supervision, and that the same is true and correct to the best of my knowledge and belief.

Date Surveyed
MAY 19, 1972

Registered Professional Engineer and/or Land Surveyor

John W. West
Certificate No. **676**

473

RECEIVED

473

MAY 22 1972

OIL CONSERVATION COMM.
HOBBS, N. M.