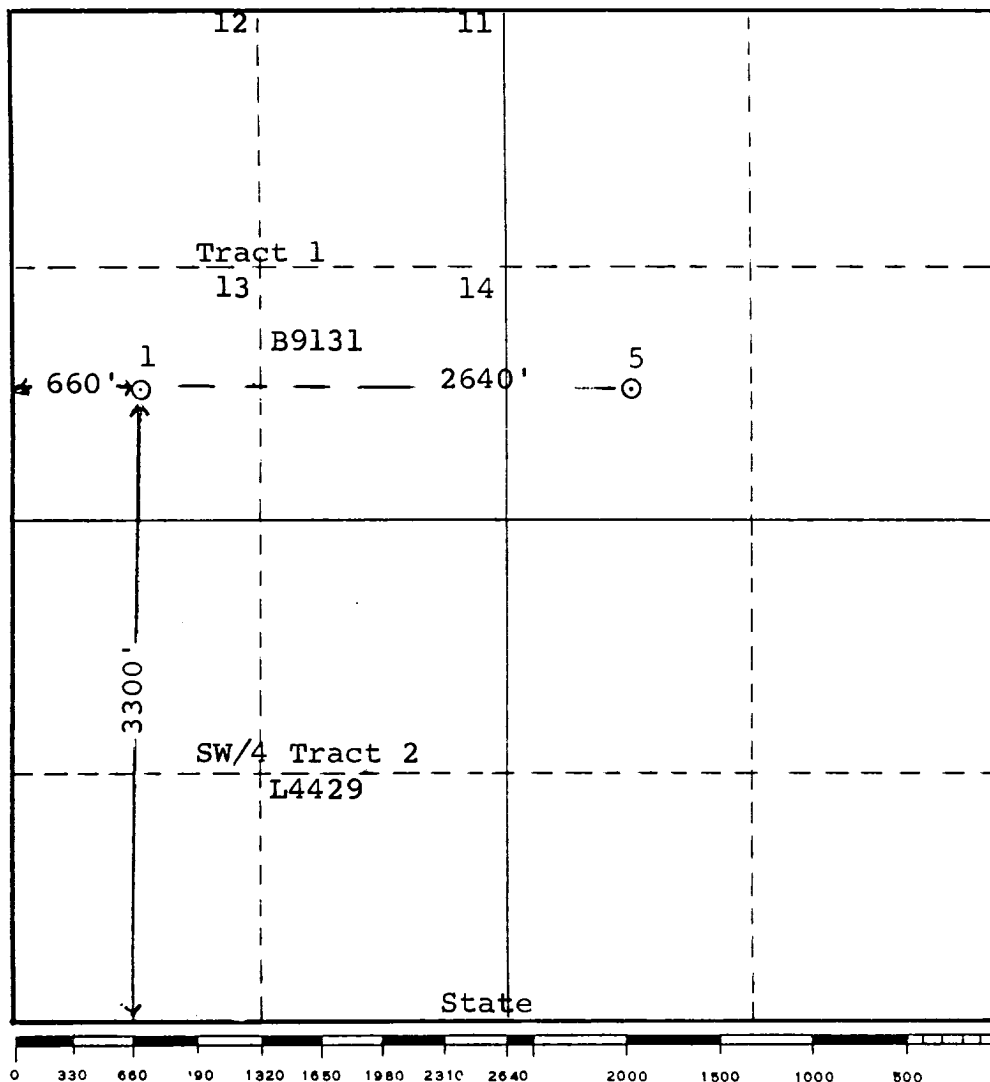


-102  
Sup. les C-128  
Date Recv 1-4-65

Operator Western Oil Producers, Inc.		Lease State <i>Com</i>		Well No. 1
Unit Letter M	Section 5	Township 21S	Range 35E	County Lea
Actual Footage Location of Well: 3300 feet from the south line and 660 feet from the west line (ctr. Lot 13)				
Ground Level Elev. 3644	Producing Formation Morrow	Pool Osudo-extension	Dedicated Acreage: Lots 11, 12, 13, 14 320 Acres	

- ☒ Yes      ☐ No

No allowable will be assigned to the well until all interests have been consolidated (by communitization, unitization, forced-pooling, or otherwise) or until a non-standard unit, eliminating such interests, has been approved by the Commission.



Certificate No. 929

RECEIVED

001 10 1972

OIL CONSERVATION COMM.  
HOBBS, N. M.

113

Copyrighted reproduction prohibited

STATE NM

AP 80-025-24266

COUNTY LEA FIELD Osado

OPR WESTERN OIL PRODUCERS, INC.

NO 1 LEASE State Com

Sec 5, T-21-S, R-35-E

3300' FSL, 660' FWL of Sec

CLASS

FORMATION	DATUM	FORMATION	DATUM
10-18-72 CMP 1-24-73			
13 3/8" at 316' w/300 sx			
9 5/8" at 5218' w/350 sx			
7" at 11,214' w/250 sx			
4 1/2" lnr 11,170-11,465' Set			
TD 11,550'		PBD 11,465'	

IP (Morrow) Perfs 11,319-458' CAOF 3255 MCFGPD. GOR dry;  
Grav (gas) .602; SIWHP 1139#, SIBHP 1484#

CONTR Moran OPRS ELEV 3644' GL PD 11,700' TYPE RT

FR 10-16-72  
(Morrow)  
Drlg 3900'  
TD 5225'; Prep run 8 5/8"  
Drlg 7700'  
Drlg 10,249'  
Drlg 11,200'  
Drlg 11,250'  
TD 11,550'; WOO "Tight"  
DS's "Tight"  
TD 11,550'; "Tight"  
TD 11,550'; PBD 11,465'; COMPLETE  
Slotted liner @ 11,319-329', 11,372-458'

LEA  
WESTERN OIL PRODUCERS, INC.

Osado NM Sec 5, T21S, R35  
1 State Com Page #2

3-26-73

Continued

(Morrow) FIVE POINT GAUGES:

Flwd 479 MCFGPD, 11/64" chk, 75 mins, TP 899#  
Flwd 792 MCFGPD, 13/64" chk, 60 mins, TP 802#  
Flwd 1018 MCFGPD, 15/64" chk, 60 mins, TP 685#  
Flwd 1392 MCFGPD, 18/64" chk, 90 mins, TP 649#  
Flwd 1860 MCFGPD, 22/64" chk, 75 mins, TP 561#  
LOG TOPS: Anhydrite 1785', Salt 1890', First  
Bone Spring Sand 8570', Second Bone Spring Sand  
9460', Third Bone Spring Sand 10,300', Wolfcamp  
10,460', Strawn 10,610', Atoka 10,790', Morrow  
11,210'

Well Drilled Tight, Will Amend if DST's released  
COMPLETION REPORTED

3-31-73