

NEW MEXICO OIL CONSERVATION COMMISSION  
WELL LOCATION AND ACREAGE DEDICATION PLAT

Form C-102  
Supersedes C-128  
Effective 1-1-65

All distances must be from the outer boundaries of the Section. 30-025-24587

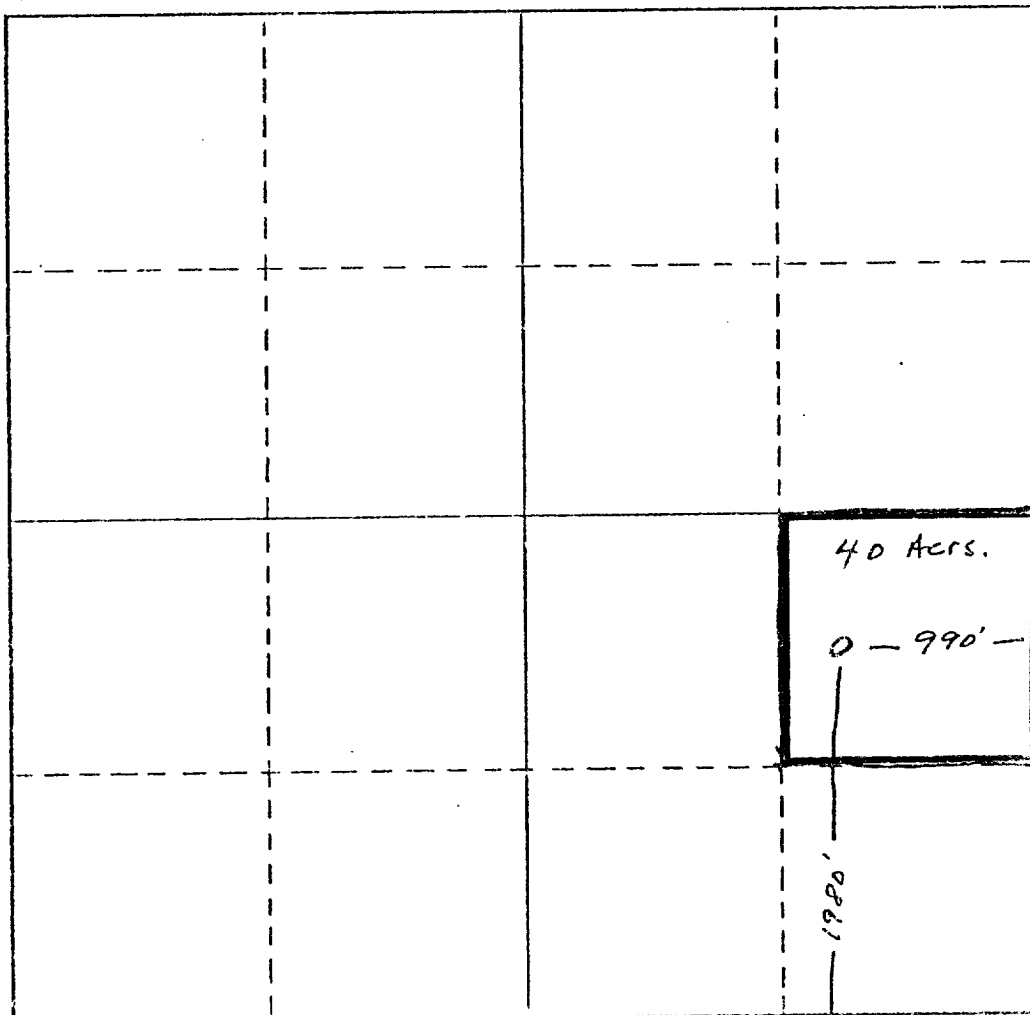
Owner <i>Dorchester Exploration, Inc.</i>			Lease <i>Wilson State Com.</i>		Well No. <i>1</i>
Unit Letter <i>I</i>	Section <i>13</i>	Township <i>21-5</i>	Range <i>34-E</i>	County <i>Len</i>	
Actual Footage Location of Well: <i>1980</i> feet from the <i>South</i> line and <i>990</i> feet from the <i>East</i> line					
Ground Level Elev. <i>3651'</i>	Producing Formation <i>Strawn (oil)</i>		Pool <i>Undesignated</i>	Dedicated Acreage: <i>40</i> Acres	

1. Outline the acreage dedicated to the subject well by colored pencil or hatchure marks on the plat below.
2. If more than one lease is dedicated to the well, outline each and identify the ownership thereof (both as to working interest and royalty).
3. If more than one lease of different ownership is dedicated to the well, have the interests of all owners been consolidated by communitization, unitization, force-pooling, etc?

☒ Yes ☐ No If answer is "yes," type of consolidation *Communitized*

If answer is "no," list the owners and tract descriptions which have actually been consolidated. (Use reverse side of this form if necessary.)

No allowable will be assigned to the well until all interests have been consolidated (by communitization, unitization, forced-pooling, or otherwise) or until a non-standard unit, eliminating such interests, has been approved by the Commission.



CERTIFICATION

I hereby certify that the information contained herein is true and complete to the best of my knowledge and belief.

*J. C. Bates*  
Name  
*Production Administrator*  
Position  
*Dorchester Exploration, Inc.*  
Company

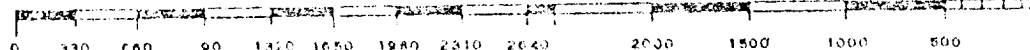
Date  
*6-15-78*

I hereby certify that the well location shown on this plat was plotted from field notes of actual surveys made by me or under my supervision, and that the same is true and correct to the best of my knowledge and belief.

Date Surveyed

Registered Professional Engineer  
and/or Land Surveyor

Certificate No.



RECEIVED

MAY 15 1976

U.S. CONSERVATION COMMISSION  
WASH. D. C.

COUNTY	LEA	FIELD	Wilson	STATE	NM
OPR	DORCHESTER EXPLORATION INC.			API	30-025-2458,
NO	1	LEASE	Wilson State	SERIAL	
	Sec 13, T-21-S, R-34-E			MAP	
	1980' FSL, 990' FEL of Sec			CO-ORD	
		CLASS		ELEV	L & S
SPD	11-21-73	MP	2-8-74		
CSG	13 3/8" at 500' w/100 sx	FORMATION	DATUM	FORMATION	DATUM
	9 5/8" at 5505' w/500 sx				
	5 1/2" at 12,416' w/500 sx				
		TD	12,591'	PBD	12,204'

IP (Morrow) Perfs 12,100-109' CAOF 11,041 MCFGPD, COR  
52,549, Grav (gas) .629, (Cond.) 60.8, SIWHP 1898#,  
SIBHP 3359#

CONTR	Moran	OPRS ELEV	3651' GL, 3667' KB PD	12,700'	TYPE	RT
-------	-------	-----------	-----------------------	---------	------	----

F.R. 11-19-73  
(Morrow)  
12-3-73 AMEND TOWNSHIP: Formerly reported as  
T-12-S  
12-20-73 Drlg 10,005'  
1-3-74 Drlg 11,692'  
1-7-74 Drlg 11,965' sh  
1-16-74 Drlg 12,356'  
1-23-74 TD 12,591', Tstg  
Perf 12,241-303' w/24 shots (overall)  
Acid (12,241-303') 4000 gals  
Swb 4-6 BW in 24 hrs (12,241-303')

DEM

DORCHESTER EXPLORATION INC.

Wilson

1 Wilson State

Sec 10, T21S, R34E

NM

Page #2

2-12-74

TD 12,591'; PB 12,200'; Tstg  
Squeezed (Perfs) 12,241-303' w/100 sx  
Perf 12,100-109' w/1 SPF  
Flwd 5900i MCFGPD in 24 hrs, 24/64" chk,  
FTP 1750# + 75 B Cond (12,100-109')

3-27-74

TD 12,591'; PB 12,200'; WO Pipeline Conn

5-6-74

TD 12,591'; PB 12,200'; COMPLETE

(Morrow) FOUR POINT GAUGES:

Flwd 2310 MCFGPD, 2.75" Orifice, 2 hrs, TP 1747#

Flwd 3882 MCFGPD, 2.75" Orifice, 1 hr. TP 1592#

Flwd 6281 MCFGPD, 2.75" Orifice, 45 mins,  
TP 973#

Flwd 6772 MCFGPD, 2.75" Orifice, 1 3/4 hrs,  
TP 692#

5-6-74

Cont'd

LOG TOPS: Yates 3435', Delaware 5580',  
Bone Springs 7860', Strawn 11,141', Atoka  
11,455', Morrow 11,970'

5-11-74

COMPLETION REPORTED

NEW MEXICO OIL CONSERVATION COMMISSION  
WELL LOCATION AND ACREAGE DEDICATION PL

Form 7-102  
Revised 6-198  
Effective 1-1-65

All distances must be from the outer boundaries of the Section.

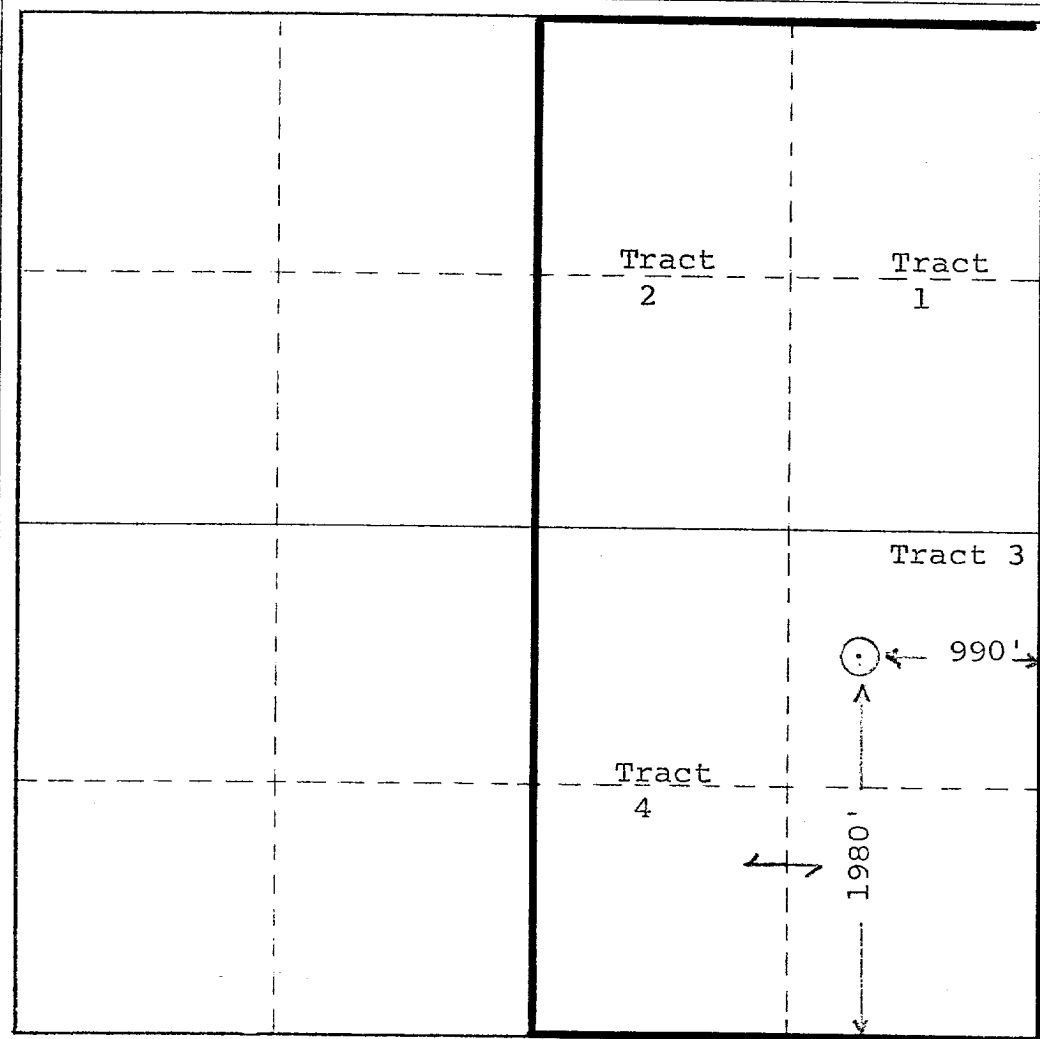
Operator <b>Dorchester Exploration, Inc.</b>			Lease <b>Wilson State Com.</b>		Well No. <b>1</b>
Unit Letter <b>I</b>	Section <b>13</b>	Township <b>21S</b>	Range <b>34E</b>	County <b>Lea</b>	
Actual Footage Location of Well:					
<b>1980</b>		feet from the <b>south</b> line and		<b>990</b> feet from the <b>east</b> line	
Ground Level Elev. <b>3651'</b>	Producing Formation <b>Morrow</b>		Pool <b>Wilson-Morrow</b>		Dedicated Acreage: <b>E/2 320</b> Acres

1. Outline the acreage dedicated to the subject well by colored pencil or hachure marks on the plat below.
2. If more than one lease is dedicated to the well, outline each and identify the ownership thereof (both as to working interest and royalty).
3. If more than one lease of different ownership is dedicated to the well, have the interests of all owners been consolidated by communitization, unitization, force-pooling, etc?

☒ Yes ☐ No If answer is "yes," type of consolidation Communitized

If answer is "no," list the owners and tract descriptions which have actually been consolidated. (Use reverse side of this form if necessary.)

No allowable will be assigned to the well until all interests have been consolidated (by communitization, unitization, forced-pooling, or otherwise) or until a non-standard unit, eliminating such interests, has been approved by the Commission.



CERTIFICATION

I hereby certify that the information contained herein is true and complete to the best of my knowledge and belief.

Name **J. D. Cooper**  
**Vice President**

Position

Company  
**DORCHESTER EXPLORATION, INC.**

Date  
**November 8, 1973**

I hereby certify that the well location shown on this plat was plotted from field notes of actual surveys made by me or under my supervision, and that the same is true and correct to the best of my knowledge and belief.

Date Surveyed

**7-3-73**

Registered Professional Engineer and/or Land Surveyor

**N. Raymond Lamb**

*N. Raymond Lamb*

Certificate No.

**929**

