

NO. OF COPIES RECEIVED	
DISTRIBUTION	
SANTA FE	
FILE	
U.S.G.S.	
LAND OFFICE	
OPERATOR	

NEW MEXICO OIL CONSERVATION COMMISSION

Form C-101

Revised 1-1-69

5A. Indicate Type of Lease	
STATE <input type="checkbox"/>	FEE <input checked="" type="checkbox"/>
5. State Oil & Gas Lease No.	

APPLICATION FOR PERMIT TO DRILL, DEEPEN, OR PLUG BACK

1a. Type of Work		7. Unit Agreement Name	
b. Type of Well DRILL <input checked="" type="checkbox"/> DEEPEN <input type="checkbox"/> PLUG BACK <input type="checkbox"/>		8. Firm or Lease Name L.W. White	
2. Name of Operator Amerada Hess Corporation		9. Well No. 2	
3. Address of Operator P.O. Box 2040, Tulsa, Oklahoma 74102		10. Field and Foot, or Wildcat Eumont, Queens	
4. Location of Well UNIT LETTER C LOCATED 1980 FEET FROM THE West LINE AND 660 FEET FROM THE North LINE OF SEC. 2 T1S 21S R3E 35E N40W		12. County Lea	
21. Elevations (Show whether DF, RT, etc.) 3569.2'		21A. Kind & Status Plug. Band Blanket	
21B. Drilling Contractor Cactus Drilling Co.		22. Approx. Date Work will start June 25, 1974	

PROPOSED CASING AND CEMENT PROGRAM

SIZE OF HOLE	SIZE OF CASING	WEIGHT PER FOOT	SETTING DEPTH	SACKS OF CEMENT	EST. TOP
12 1/4"	8-5/8"	32#	350'	250	surface
7-7/8"	5-1/2"	15.5#	4000'	165	3000'

See attached well prognosis & ref. page 2 drilling procedure

APPROVAL VALID
FOR 90 DAYS UNLESS
DRILLING COMMENCED,
EXPIRES Sept. 19, 1974

IN ABOVE SPACE DESCRIBE PROPOSED PROGRAM: IF PROPOSAL IS TO DEEPEN OR PLUG BACK, GIVE DATA ON PRESENT PRODUCTIVE ZONE AND PROPOSED NEW PRODUCTIVE ZONE. GIVE BLOWOUT PREVENTER PROGRAM, IF ANY.

I hereby certify that the information above is true and complete to the best of my knowledge and belief.

Signed E. Guggin Title Adm. Asst. Drilling Services Date 6/17/74
(This space for State Use)

Geologist

APPROVED BY Johna M. Mays TITLE Geologist DATE JUN 21 1974
CONDITIONS OF APPROVAL, IF ANY:

RECEIVED

JUN 21 1974

OIL CONSERVATION COMM.
HOBBS, N. M.

WELL PROGNOSIS

AMERADA HESS CORPORATION
L. W. WHITE No. 2
LEA COUNTY, NEW MEXICO

LOCATION: 660' FNL and 1980' FNL, Sec. 2-T21S-R35E

PROPOSED OBJECTIVE & DEPTH: Queen formation, 4000'

HOLE SIZE: 11" to \pm 350'; 7-7/8" to \pm 4000'

CASING PROGRAM: 8-5/8" to \pm 350' w/cement circulated
5-1/2" to \pm 4000' w/cement to 3000'

ELECTRIC LOGGING: Gamma Ray-Neutron TD to base surface pipe.

SAMPLE PROGRAM: A geolograph will be used; 10' drilling time will be kept. 10' samples will be caught base of conductor pipe to TD with 5' samples as directed by well site geologist. Contractor will wash and sack one (1) set of wet samples and wash, dry and put in envelope one (1) set of dried samples.

MUD PROGRAM: Surface to 350'
Native clay and fresh water gel spud mud w/fiber or paper as needed to maintain returns.
350' to 4000'
Drill w/brine water to prevent eroding salt section. Control viscosity as required for good hole cleaning and sample recovery.
Mud up at 3600' with salt gel, and starch to maintain 34-38 sec. vis., and 6-9 cc water loss. Lime may be added to control pH at 9-10.
Paper and fiber are usually sufficient to maintain returns; 5-7% oil may be required if lost circulation becomes a problem.

DRILL STEM TESTS: Two tests are estimated; one for Seven Rivers and one for Queen.

CEMENTING PROGRAM: Surface Casing
Cement w/220 sacks Class "C" cement w/2% CaCl_2 . Use Halliburton Type M Guide Shoe w/ wooden top plug. Use 3 centralizers, circulated cement. WOC 18 hours.

RECEIVED

JUN 21 1974

OIL CONSERVATION COMM.
HOUSTON, N. M.

CEMENTING PROGRAM:(cont'd.)

Production Casing

Cement w/165 sacks Class "C" cement w/10# salt per sack. Use regular cement guide shoe and insert float w/auto fill. Use 10 centralizers and one limit clamp to fasten first centralizer above guide shoe.

DRILLING PROCEDURE:

1. MI AND RURT.
2. Drill 12-1/4" hole to \pm 350'. Set 8-5/8" casing \pm 350' and circulate cement.
3. WOC 18 hours. Install wellhead, N.U. BOPS, pressure test casing to 1000 psi, for 30 minutes.
4. Drill 7-7/8" hole to \pm 3710'. TOH w/bit, TIH and take DST in Seven Rivers.
5. Drill 7-7/8" hole to \pm 4000' TD. TOH w/bit, TIH and take DST in Queen formation.
6. Run Gamma Ray-Neutron Log from TD to surface casing shoe.
7. Circulate and condition hole to run casing. Run 5-1/2" casing to \pm 4000' and cement.
8. R.D. AND M.O.R.T.
9. MI AND RU, completion rig.
10. Complete as pumping well in Queen formation. Turn over to production.



DAVID LANSON
Drilling Engineer
May 31, 1974

DL/jm

Attachments: Mud Programs
Cementing Programs

cc: R. G. Straw
H. E. Hegwood

RECEIVED

JUN 21 1974

OIL CONSERVATION COMM.
HOBBBS, N. H.

NEW MEXICO OIL CONSERVATION COMMISSION
WELL LOCATION AND ACREAGE DEDICATION PL

Form C-102
Supersedes C-128
Effective 1-1-65

All distances must be from the outer boundaries of the Section

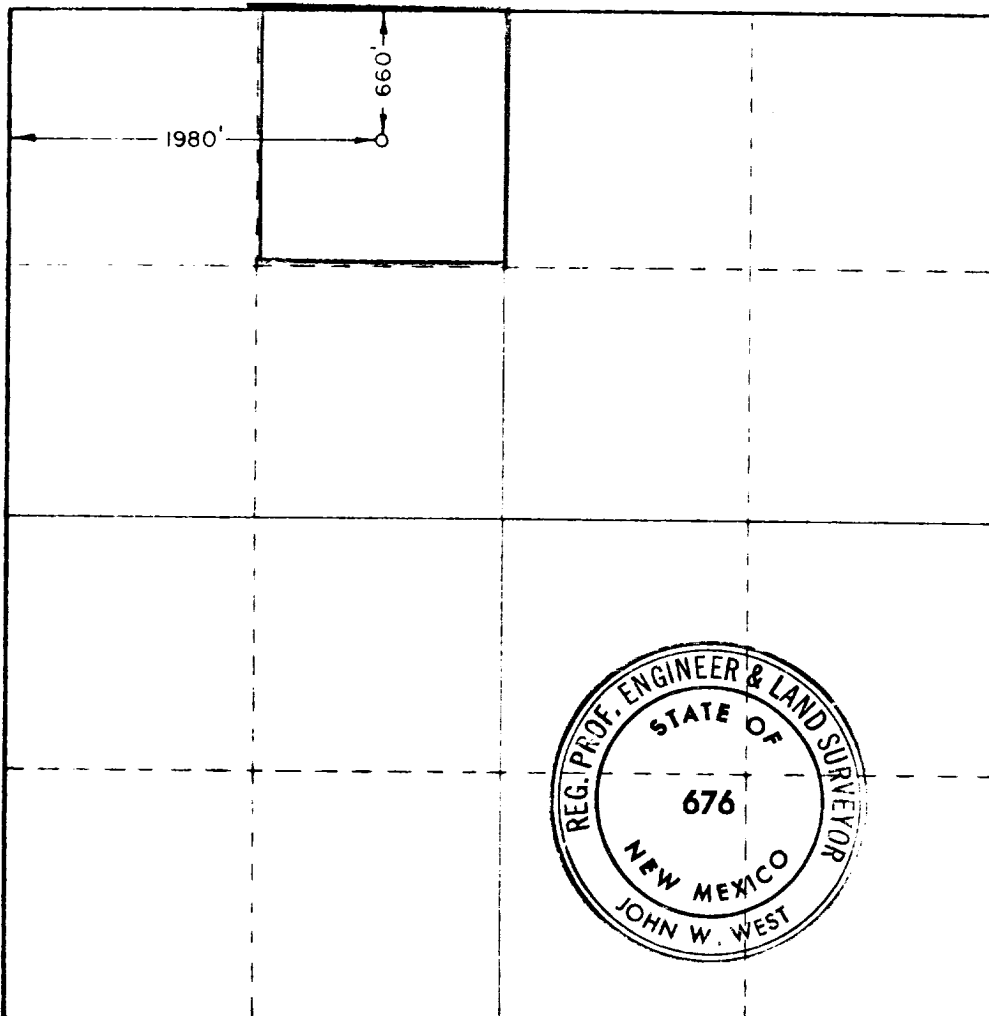
Operator AMERADA HESS CORPORATION			Lease L.W. WHITE		Well No. 2
Init Letter C	Section 2	Township 21 SOUTH	Range 35 EAST	County LEA	
Actual Footage Location of Well: 660 feet from the NORTH line and 1980 feet from the WEST line					
Ground Level Elev. 3569.2	Producing Formation Queens		Pool Eumont, 30%	Dedicated Acreage 37.72 Acres	

- Outline the acreage dedicated to the subject well by colored pencil or hatchure marks on the plat below.
- If more than one lease is dedicated to the well, outline each and identify the ownership thereof (both as to working interest and royalty).
100% Amerada Hess Corporation
- If more than one lease of different ownership is dedicated to the well, have the interests of all owners been consolidated by communitization, unitization, force-pooling, etc?

☐ Yes ☐ No If answer is "yes," type of consolidation _____

If answer is "no," list the owners and tract descriptions which have actually been consolidated. (Use reverse side of this form if necessary.) _____

No allowable will be assigned to the well until all interests have been consolidated (by communitization, unitization, forced-pooling, or otherwise) or until a non-standard unit, eliminating such interests, has been approved by the Commission.



CERTIFICATION

I hereby certify that the information contained herein is true and complete to the best of my knowledge and belief.

E. Griffin
Name

E. Griffin
Position

Adm. Asst. Drilling Serv.
Company

Amerada Hess Corporation
Date

6/17/74

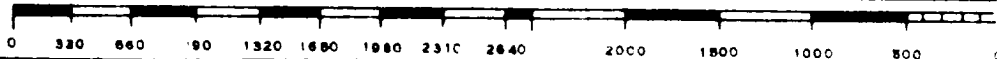
I hereby certify that the well location shown on this plat was plotted from field notes of actual surveys made by me or under my supervision, and that the same is true and correct to the best of my knowledge and belief.

Date Surveyed

JUNE 14, 1974

Registered Professional Engineer and/or Land Surveyor

John W. West
Certificate No. **676**



173

RECEIVED

JUN 21 1967

OIL CONSERVATION COM. M.
HOBBBS, N. M.