

| | | | | | | | |
|------------------------------------|-----------|-----------|------------------------------|----------------------------------|------------------------------|---------------|------------|
| Operator HANSON OIL CORPORATION | | | | Lease SHELL STATE | | Well No. 2 | |
| Location of Well | Unit J | Sec 36 | Twp 21 SOUTH | Rge 36 EAST | County LEA | | |
| Name of Reservoir or Pool | | | Type of Prod (Oil or Gas) | Method of Prod Flow, Art Lift | Prod. Medium (Tbg or Csg) | | Choke Size |
| Upper Compl | BLINEBRY | | OIL | FLOW | Tbg | | 18/64 |
| Lower Compl | DRINKARD | | OIL | ART. LIFT | Tbg | | OPEN |

FLOW TEST NO. 1

Both zones shut-in at (hour, date): 10:00 AM 6-18-79

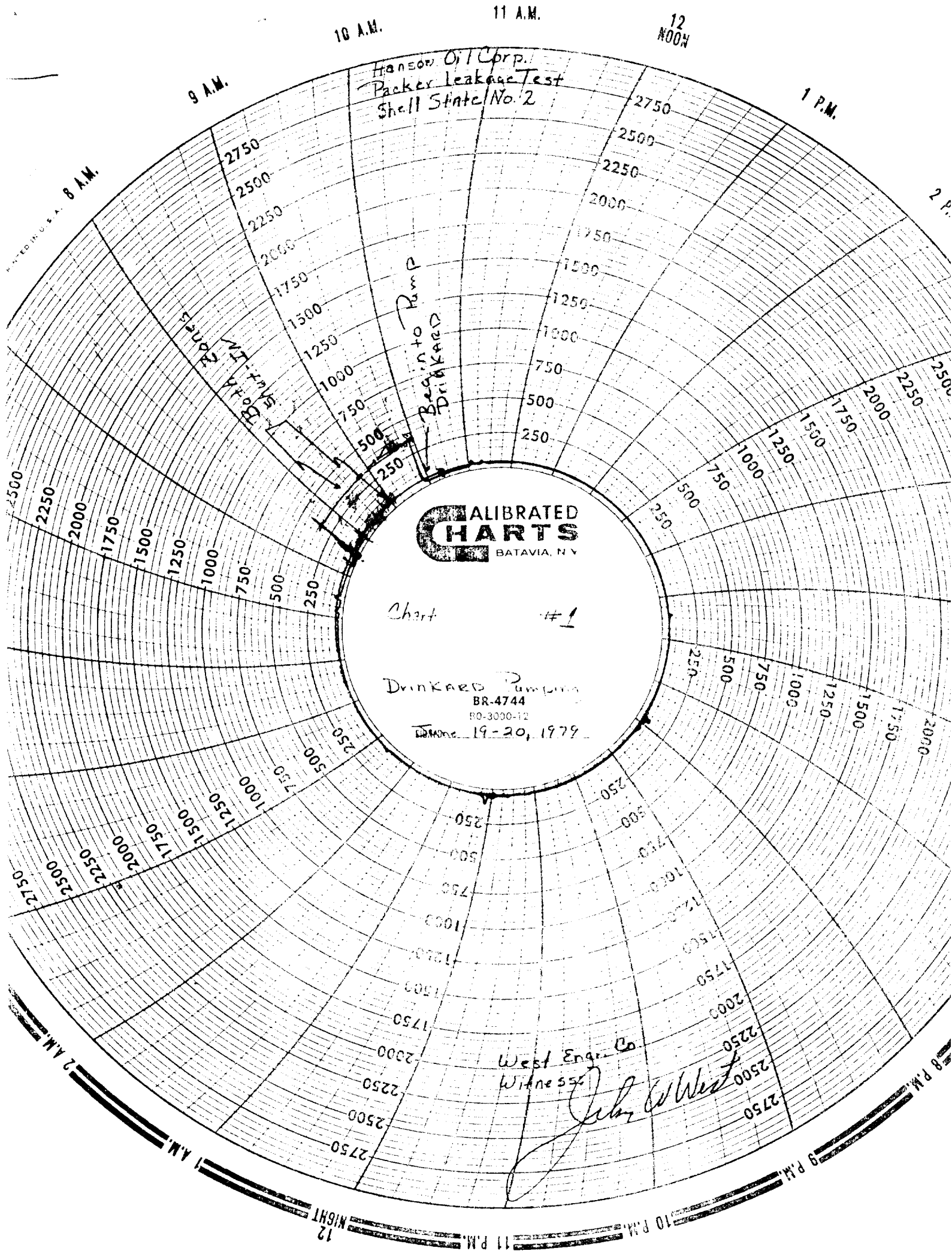
| | | |
|--|--------------------------------------|---------------------|
| Well opened at (hour, date): 10:00 AM 6-19-79 | Upper Completion | Lower Completion |
| Indicate by (X) the zone producing..... | | X |
| Pressure at beginning of test..... | 50 | 350 |
| Stabilized? (Yes or No)..... | YES | YES |
| Maximum pressure during test..... | 50 | 350 |
| Minimum pressure during test..... | 50 | 50 |
| Pressure at conclusion of test..... | 50 | 50 |
| Pressure change during test (Maximum minus Minimum)..... | NONE | 300 |
| Was pressure change an increase or a decrease?..... | NONE | DECREASE |
| Well closed at (hour, date): 10:00 AM 6-20-79 | Total Time On Production 24 HOURS | |
| Oil Production | Gas Production | |
| During Test: 6 bbls; Grav. 37.8 ; During Test 80 MCF; GOR 13,333 | | |
| Remarks | | |

FLOW TEST NO. 2

| | | |
|---|--|---------------------|
| Well opened at (hour, date): 10:30 AM 6-21-79 | Upper Completion | Lower Completion |
| Indicate by (X) the zone producing..... | X | |
| Pressure at beginning of test..... | 60 | 225 |
| Stabilized? (Yes or No)..... | YES | YES |
| Maximum pressure during test..... | 80 | 225 |
| Minimum pressure during test..... | 60 | 225 |
| Pressure at conclusion of test..... | 80 | 225 |
| Pressure change during test (Maximum minus Minimum)..... | 20 | NONE |
| Was pressure change an increase or a decrease?..... | DECREASE | NONE |
| Well closed at (hour, date): 11:15 AM 6-22-79 | Total time on Production 24 1/2 HOURS | |
| Oil Production | Gas Production | |
| During Test: 33 bbls; Grav. 37.2 ; During Test 134 MCF; GOR 4,060 | | |
| Remarks | | |

I hereby certify that the information herein contained is true and complete to the best of my knowledge.

approved JUL 10 1979 19
New Mexico Oil Conservation Commission
Orig. Signed by
Jerry Serran
Dist. L. Serran
Operator HANSON OIL CORPORATION
By John W. West
Title ENGINEER
Date 6-29-79



10 A.M.

11 A.M.

12 NOON

1 P.M.

2 P.M.

8 A.M.

9 A.M.

Hanson Oil Corp.
Packer Leakage Test
Shell State No. 2

**CALIBRATED
CHARTS**
BATAVIA, N.Y.

Chart #1

Drinkard Pumping
BR-4744
PO-3000-12
Date 19-20, 1979

West Eng. Co.
Witnessed by
John C. West

1 A.M.

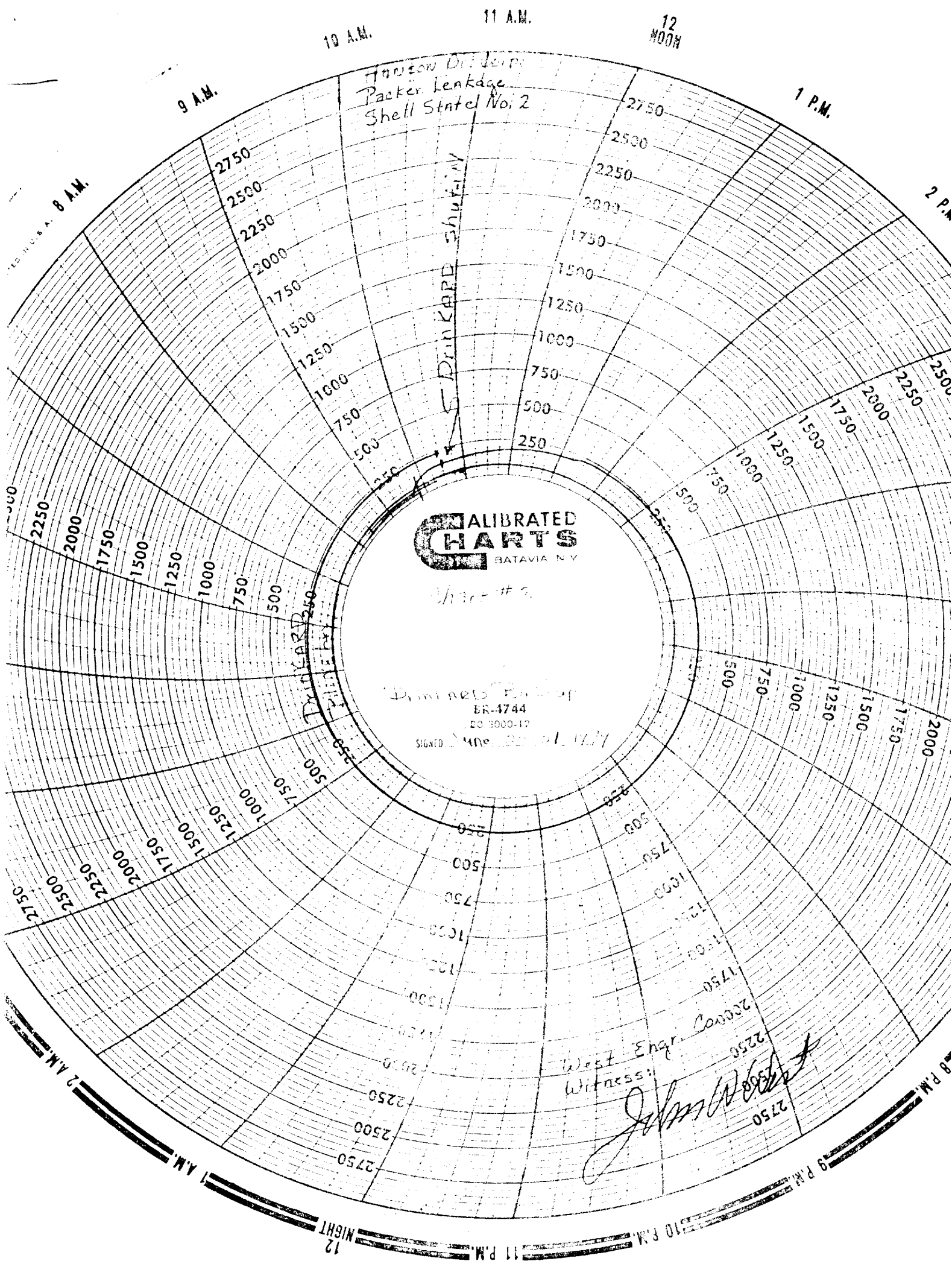
12 NIGHT

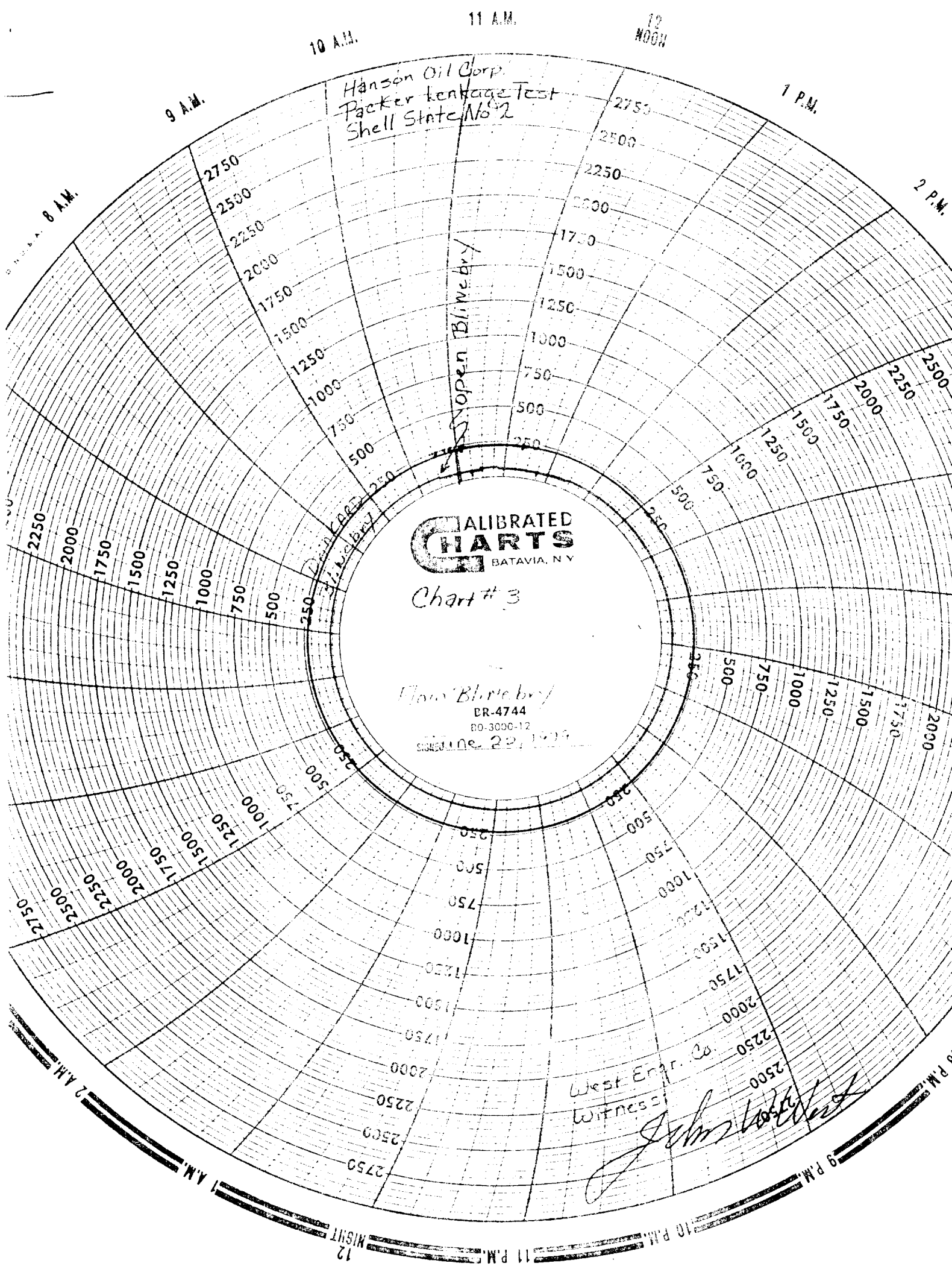
11 P.M.

10 P.M.

9 P.M.

8 P.M.





10 A.M.

11 A.M.

12 NOON

1 P.M.

2 P.M.

8 A.M.

9 A.M.

Hanson Oil Corp.
Packer Leakage Test
Shell State No 2

CALIBRATED
CHARTS
BATAVIA, N.Y.

Chart # 3

Flow Blue by
PR-4744
BO-3000-12
SIGNED 22, 1929

Open Blue by

Flow Blue by

West Eng. Co.
Witness

John H. West

9 P.M.

10 P.M.

11 P.M.

12 MIDNIGHT

1 A.M.

2 A.M.

3 A.M.

4 A.M.

5 A.M.

6 A.M.

7 A.M.

8 A.M.

9 A.M.

10 A.M.

11 A.M.

12 NOON

1 P.M.

2 P.M.

3 P.M.

4 P.M.

5 P.M.

6 P.M.

7 P.M.

8 P.M.

9 P.M.

10 P.M.

11 P.M.

12 MIDNIGHT

1 A.M.

2 A.M.

3 A.M.

4 A.M.

5 A.M.

6 A.M.