

NEW MEXICO OIL CONSERVATION COMMISSION
WELL LOCATION AND ACREAGE DEDICATION PLAT

Form O-128
Supersedes O-128
Effective 1-1-65

All distances must be from the outer boundaries of the Section

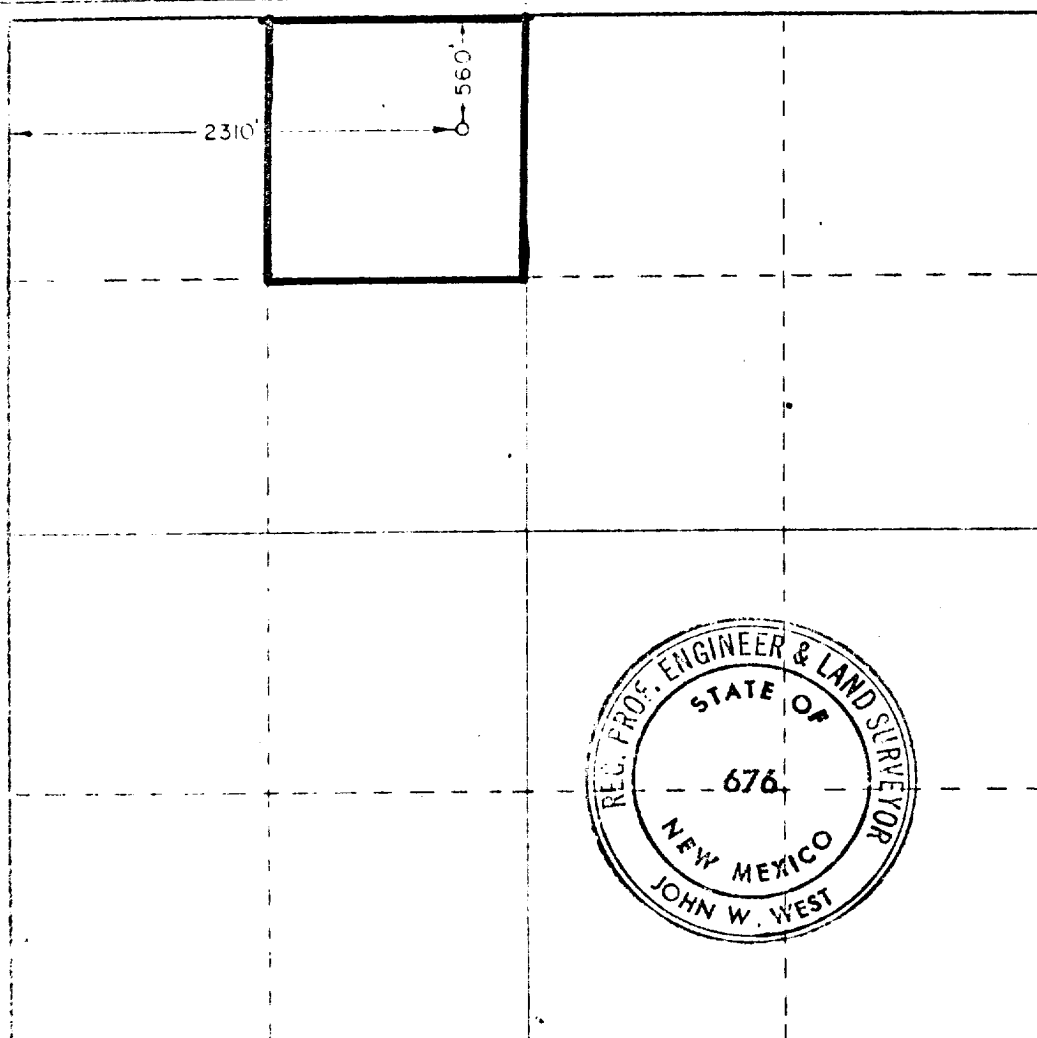
Gulf Oil Corporation		Harry Leonard NCT-C		Well No. 17	
C	36	21 South	36 East	Lea	
560	feet from the	North	line and	2310	feet from the
Blinebry		Blinebry		40 Acres	

- Outline the acreage dedicated to the subject well by colored pencil or hachure marks on the plat below.
- If more than one lease is dedicated to the well, outline each and identify the ownership thereof (both as to working interest and royalty).
- If more than one lease of different ownership is dedicated to the well, have the interests of all owners been consolidated by communitization, unitization, force-pooling, etc?

☐ Yes ☐ No If answer is "yes," type of consolidation _____

If answer is "no," list the owners and tract descriptions which have actually been consolidated (Use reverse side of this form if necessary.) _____

No allowable will be assigned to the well until all interests have been consolidated (by communitization, unitization, forced-pooling, or otherwise) or until a non-standard unit, eliminating such interests, has been approved by the Commission.



CERTIFICATION

I hereby certify that the information contained herein is true and complete to the best of my knowledge and belief.

C. D. Boralnd

C. D. BORALND

Area Production Manager

Gulf Oil Corporation

February 10, 1975

I hereby certify that the well location shown on this plat was plotted from field notes of actual surveys made by me or under my supervision, and that the same is true and correct to the best of my knowledge and belief.

Date approved

February 4, 1975

Registered Professional Engineer and Land Surveyor

John W. West
Certificate No. 676

135 660 90 112 1480 1680 2310 2640 2000 1800 1000 800 0