

Supersedes 6-1, 6-2, 6-3, 6-4, 6-5, 6-6, 6-7, 6-8, 6-9, 6-10, 6-11, 6-12, 6-13, 6-14, 6-15, 6-16, 6-17, 6-18, 6-19, 6-20, 6-21, 6-22, 6-23, 6-24, 6-25, 6-26, 6-27, 6-28, 6-29, 6-30, 6-31, 6-32, 6-33, 6-34, 6-35, 6-36, 6-37, 6-38, 6-39, 6-40, 6-41, 6-42, 6-43, 6-44, 6-45, 6-46, 6-47, 6-48, 6-49, 6-50, 6-51, 6-52, 6-53, 6-54, 6-55, 6-56, 6-57, 6-58, 6-59, 6-60, 6-61, 6-62, 6-63, 6-64, 6-65, 6-66, 6-67, 6-68, 6-69, 6-70, 6-71, 6-72, 6-73, 6-74, 6-75, 6-76, 6-77, 6-78, 6-79, 6-80, 6-81, 6-82, 6-83, 6-84, 6-85, 6-86, 6-87, 6-88, 6-89, 6-90, 6-91, 6-92, 6-93, 6-94, 6-95, 6-96, 6-97, 6-98, 6-99, 6-100, 6-101, 6-102, 6-103, 6-104, 6-105, 6-106, 6-107, 6-108, 6-109, 6-110, 6-111, 6-112, 6-113, 6-114, 6-115, 6-116, 6-117, 6-118, 6-119, 6-120, 6-121, 6-122, 6-123, 6-124, 6-125, 6-126, 6-127, 6-128, 6-129, 6-130, 6-131, 6-132, 6-133, 6-134, 6-135, 6-136, 6-137, 6-138, 6-139, 6-140, 6-141, 6-142, 6-143, 6-144, 6-145, 6-146, 6-147, 6-148, 6-149, 6-150, 6-151, 6-152, 6-153, 6-154, 6-155, 6-156, 6-157, 6-158, 6-159, 6-160, 6-161, 6-162, 6-163, 6-164, 6-165, 6-166, 6-167, 6-168, 6-169, 6-170, 6-171, 6-172, 6-173, 6-174, 6-175, 6-176, 6-177, 6-178, 6-179, 6-180, 6-181, 6-182, 6-183, 6-184, 6-185, 6-186, 6-187, 6-188, 6-189, 6-190, 6-191, 6-192, 6-193, 6-194, 6-195, 6-196, 6-197, 6-198, 6-199, 6-200, 6-201, 6-202, 6-203, 6-204, 6-205, 6-206, 6-207, 6-208, 6-209, 6-210, 6-211, 6-212, 6-213, 6-214, 6-215, 6-216, 6-217, 6-218, 6-219, 6-220, 6-221, 6-222, 6-223, 6-224, 6-225, 6-226, 6-227, 6-228, 6-229, 6-230, 6-231, 6-232, 6-233, 6-234, 6-235, 6-236, 6-237, 6-238, 6-239, 6-240, 6-241, 6-242, 6-243, 6-244, 6-245, 6-246, 6-247, 6-248, 6-249, 6-250, 6-251, 6-252, 6-253, 6-254, 6-255, 6-256, 6-257, 6-258, 6-259, 6-260, 6-261, 6-262, 6-263, 6-264, 6-265, 6-266, 6-267, 6-268, 6-269, 6-270, 6-271, 6-272, 6-273, 6-274, 6-275, 6-276, 6-277, 6-278, 6-279, 6-280, 6-281, 6-282, 6-283, 6-284, 6-285, 6-286, 6-287, 6-288, 6-289, 6-290, 6-291, 6-292, 6-293, 6-294, 6-295, 6-296, 6-297, 6-298, 6-299, 6-300, 6-301, 6-302, 6-303, 6-304, 6-305, 6-306, 6-307, 6-308, 6-309, 6-310, 6-311, 6-312, 6-313, 6-314, 6-315, 6-316, 6-317, 6-318, 6-319, 6-320, 6-321, 6-322, 6-323, 6-324, 6-325, 6-326, 6-327, 6-328, 6-329, 6-330, 6-331, 6-332, 6-333, 6-334, 6-335, 6-336, 6-337, 6-338, 6-339, 6-340, 6-341, 6-342, 6-343, 6-344, 6-345, 6-346, 6-347, 6-348, 6-349, 6-350, 6-351, 6-352, 6-353, 6-354, 6-355, 6-356, 6-357, 6-358, 6-359, 6-360, 6-361, 6-362, 6-363, 6-364, 6-365, 6-366, 6-367, 6-368, 6-369, 6-370, 6-371, 6-372, 6-373, 6-374, 6-375, 6-376, 6-377, 6-378, 6-379, 6-380, 6-381, 6-382, 6-383, 6-384, 6-385, 6-386, 6-387, 6-388, 6-389, 6-390, 6-391, 6-392, 6-393, 6-394, 6-395, 6-396, 6-397, 6-398, 6-399, 6-400, 6-401, 6-402, 6-403, 6-404, 6-405, 6-406, 6-407, 6-408, 6-409, 6-410, 6-411, 6-412, 6-413, 6-414, 6-415, 6-416, 6-417, 6-418, 6-419, 6-420, 6-421, 6-422, 6-423, 6-424, 6-425, 6-426, 6-427, 6-428, 6-429, 6-430, 6-431, 6-432, 6-433, 6-434, 6-435, 6-436, 6-437, 6-438, 6-439, 6-440, 6-441, 6-442, 6-443, 6-444, 6-445, 6-446, 6-447, 6-448, 6-449, 6-450, 6-451, 6-452, 6-453, 6-454, 6-455, 6-456, 6-457, 6-458, 6-459, 6-460, 6-461, 6-462, 6-463, 6-464, 6-465, 6-466, 6-467, 6-468, 6-469, 6-470, 6-471, 6-472, 6-473, 6-474, 6-475, 6-476, 6-477, 6-478, 6-479, 6-480, 6-481, 6-482, 6-483, 6-484, 6-485, 6-486, 6-487, 6-488, 6-489, 6-490, 6-491, 6-492, 6-493, 6-494, 6-495, 6-496, 6-497, 6-498, 6-499, 6-500, 6-501, 6-502, 6-503, 6-504, 6-505, 6-506, 6-507, 6-508, 6-509, 6-510, 6-511, 6-512, 6-513, 6-514, 6-515, 6-516, 6-517, 6-518, 6-519, 6-520, 6-521, 6-522, 6-523, 6-524, 6-525, 6-526, 6-527, 6-528, 6-529, 6-530, 6-531, 6-532, 6-533, 6-534, 6-535, 6-536, 6-537, 6-538, 6-539, 6-540, 6-541, 6-542, 6-543, 6-544, 6-545, 6-546, 6-547, 6-548, 6-549, 6-550, 6-551, 6-552, 6-553, 6-554, 6-555, 6-556, 6-557, 6-558, 6-559, 6-560, 6-561, 6-562, 6-563, 6-564, 6-565, 6-566, 6-567, 6-568, 6-569, 6-570, 6-571, 6-572, 6-573, 6-574, 6-575, 6-576, 6-577, 6-578, 6-579, 6-580, 6-581, 6-582, 6-583, 6-584, 6-585, 6-586, 6-587, 6-588, 6-589, 6-590, 6-591, 6-592, 6-593, 6-594, 6-595, 6-596, 6-597, 6-598, 6-599, 6-600

★ ★ ★

3572' Est. QUEEN

EUMONT GAS

40

• If more than one lease is dedicated to the well, outline each and identify the ownership thereof (both as to working interest and royalty)

2. If more than one lease of different ownership is dedicated to the well, have the interests of all owners been consolidated by communitization, unitization, force-pooling, etc?

Yes No If answer is "yes," type of consolidation

If answer is "no," list the owners and tract descriptions which have actually been consolidated. (Use reverse side of this form, if necessary.) _____

Non-transferable will be assigned to the well until all interests have been consolidated, by communitization, unitization, forced pooling, or otherwise or until a non-standard unit, eliminating such interests, has been approved by the Commission.

I hereby certify that the information con-
tained herein is true and complete to the
best of my knowledge and belief.

2/10/75
SR. ANALYST
CONTINENTAL OIL CO.
2-7-75

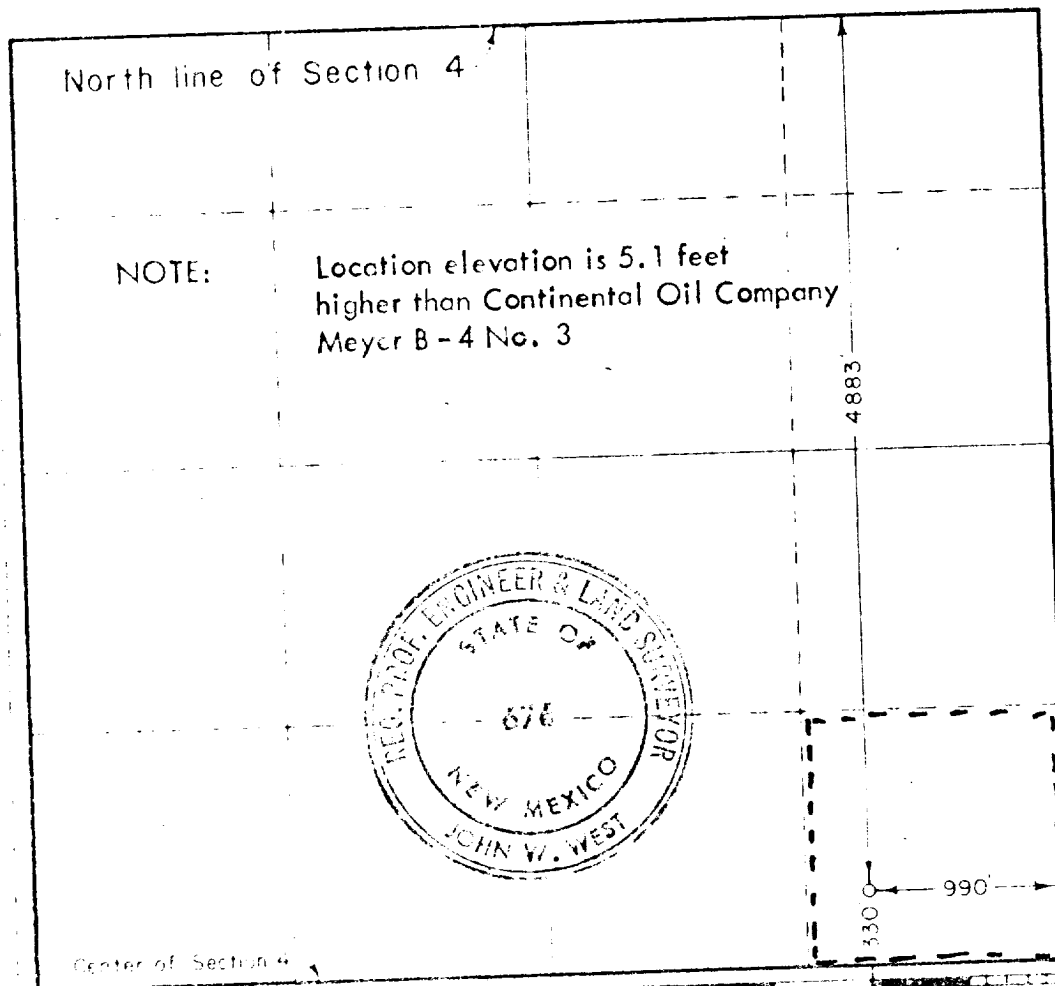
I hereby certify that the well location shown on this plat was plotted from field notes of actual surveys made by me or under my supervision, and that the same is true and correct to the best of my knowledge and belief.

January 7, 1975

1. The first step is to identify the problem or goal. This involves understanding the current situation and what needs to be achieved.

John W. West
676

676



Center of Section 4

30	60	90	120	150	180	210	240	270	300	330	360
20	40	60	80	100	120	140	160	180	200	220	240