

DISTRICT II

Revised February 10, 1999

P.O. Box Drawer DD, Artesia, NM 88211-0719

OIL CONSERVATION DIVISION

Instructions on back
Submit to Appropriate District Office

DISTRICT III

1050 Rio Brazos Rd., Aztec, NM 87410

P.O. Box 2088

State Lease - 6 Copy

DISTRICT IV

Santa Fe, New Mexico 87504-2088

Fee Lease - 5 Copy

P.O. Box 2088, Santa Fe, NM 87504-2088

☐ AMENDED REPORT

APPLICATION FOR PERMIT TO DRILL, RE-ENTER, DEEPEN, PLUGBACK, OR ADD A ZONE

¹ Operator Name and Address CHEVRON USA INC 15 SMITH ROAD, MIDLAND, TX 79705		² OGRID Number 4323
⁴ Property Code 2683	⁵ Property Name MATTERN, H.T. (NCT-C)	³ API Number 30-025-25500
		⁶ Well No. 11

⁷ Surface Location

UI or lot no	Section	Township	Range	Lot.Idn	Feet From The	North/South Line	Feet From The	East/West Line	County
M	8	21-S	37-E		316	SOUTH	660'	WEST	LEA

⁸ Proposed Bottom Hole Location If Different From Surface

UI or lot no	Section	Township	Range	Lot.Idn	Feet From The	North/South Line	Feet From The	East/West Line	County
⁹ Proposed Pool 1 Wildcat Paddock									
¹⁰ Proposed Pool 2									

¹¹ Work Type Code P	¹² Well Type Code O	¹³ Rotary or C.T. ROTARY	¹⁴ Lease Type Code P	¹⁵ Ground Level Elevation 3495'
¹⁶ Multiple No	¹⁷ Proposed Depth 7125'	¹⁸ Formation Paddock	¹⁹ Contractor	²⁰ Spud Date 3/25/02

²¹ Proposed Casing and Cement Program

SIZE OF HOLE	SIZE OF CASING	WEIGHT PER FOOT	SETTING DEPTH	SACKS OF CEMENT	EST. TOP
NO CHANGE					

²² Describe the proposed program. If this application is to DEEPEN or PLUG BACK give the data on the present productive zone and proposed new productive zone. Describe the blowout prevention program, if any. Use additional sheets if necessary.

CHEVRON U.S.A. INTENDS TO RECOMPLETE THE SUBJECT WELL TO THE PADDOCK FORMATION. THE INTENDED PROCEDURE IS AS FOLLOWS:

- 1) MIRU PU. POH W/PMP & RDS. REM WH. INSTL BOP. REL TAC. TIH W/BIT & WS TO 6800. REV CIRC WELL CLN FR 6800 USING 2% KCL WTR.
- 2) INSTL LUBRICATOR & TEST TO 1000 PSI. RUN GR/CBL/CCL FR 6800-2800. SET CIBP @ 6775. PERF 5228-38, 5252-66, 5276-94. DUMP 35' CMT ON TOP OF C IBP @ 6775.
- 3) TIH W/PKR. ACIDIZE PERFS 5228-94 W/1500 GALS 15% HCL ACID. DISPL ACID W/2% KCL WTR.
- 4) REL PKR & PULL UP HLE TO 5200'. SWAB BACK. OPEN WELL. REL PKR.
- 5) TIH W/MA, PERF SUB. TBG, TAC. SET TAC @ 5175'. SN @ 5300'.
- 6) REM BOP. INSTL WH. TIH W/RDS & n PMP.
- 7) TURN WELL OVER TO PRODUCTION.

Permit Expires 1 Year From Approval
Data Unless Labeled Otherwise
Plugback

²³ I hereby certify that the rules and regulations of the Oil Conservation Division have been complied with and that the information given above is true and complete to the best of my knowledge and belief.

Signature *Denise Leake*
Printed Name Denise Leake
Title Regulatory Specialist
Date 3/11/02 Telephone 915-687-7375

OIL CONSERVATION DIVISION

ORIGINAL SIGNED BY
PAUL F. KAUTZ
PETROLEUM ENGINEER

Approved By:

Title:

Approval Date:

APR 11 2002

Expiration Date:

Conditions of Approval:
Attached

DISTRICT II

P.O. Box Drawer DD, Artesia, NM 88211-0719

DISTRICT III

1000 Rio Brazos Rd., Aztec, NM 87410

DISTRICT IV

P.O. Box 2088, Santa Fe, NM 87504-2088

OIL CONSERVATION DIVISION

P.O. Box 2088

Santa Fe, New Mexico 87504-2088

Revised February 10, 1999

Instructions on back

Submit to Appropriate District Office

State Lease - 4 Copies

Fee Lease - 3 Copies

☐ AMENDED REPORT

WELL LOCATION AND ACREAGE DEDICATION PLAT

1 API Number 30-025-25500	2 Pool Code 402-10	3 Pool Name PADDOCK <i>Wildcat</i>
4 Property Code <i>2683</i>	5 Property Name MATTERN, H.T. (NCT-C)	6 Well No. 11
7 OGRID Number 4323	8 Operator Name CHEVRON USA INC	9 Elevation 3495'

10 Surface Location

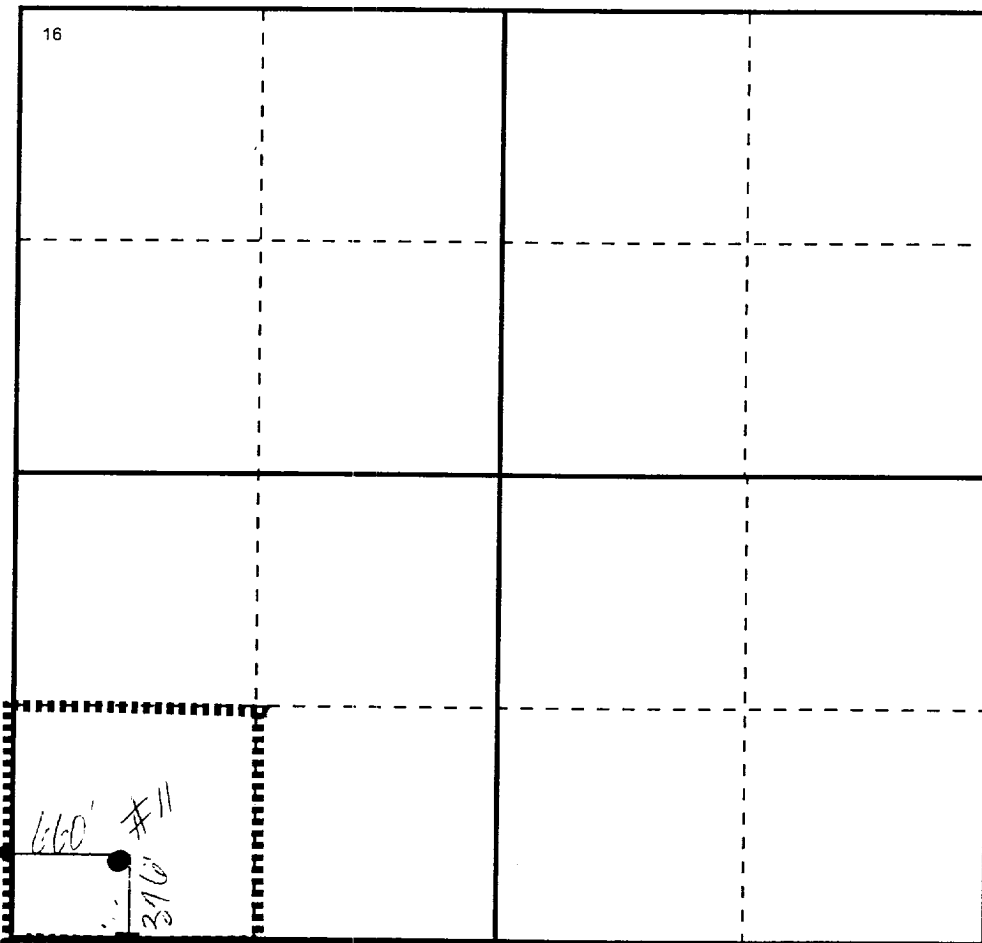
Ul or lot no	Section	Township	Range	Lot Idn	Feet From The	North/South Line	Feet From The	East/West Line	County
M	8	21-S	37-E		<i>396'</i>	SOUTH	660'	WEST	LEA

11 Bottom Hole Location If Different From Surface

Ul or lot no	Section	Township	Range	Lot Idn	Feet From The	North/South Line	Feet From The	East/West Line	County

12 Dedicated Acre 40	13 Joint or Infill No	14 Consolidation Code	15 Order No.
-------------------------	--------------------------	-----------------------	--------------

NO ALLOWABLE WILL BE ASSIGNED TO THIS COMPLETION UNTIL ALL INTERESTS HAVE BEEN CONSOLIDATED
OR A NON-STANDARD UNIT HAS BEEN APPROVED BY THE DIVISION



17 OPERATOR CERTIFICATION
I hereby certify that the information contained herein is true and complete to the best of my knowledge and belief.
Signature <i>Denise Leake</i>
Printed Name Denise Leake
Position Regulatory Specialist
Date 3/11/02
18 SURVEYOR CERTIFICATION
I hereby certify that the well location shown on this plat was plotted from field notes of actual surveys made by me or under my supervision, and that the same is true and correct to the best of my knowledge and belief.
Date Surveyed
Signature & Seal of Professional Surveyor
Certificate No.