

NEW MEXICO OIL CONSERVATION COMMISSION
WELL LOCATION AND ACREAGE DEDICATION PLAT

Form C-122
Supersedes C-128
Effective 1-1-65

All distances must be from the outer boundaries of the Section

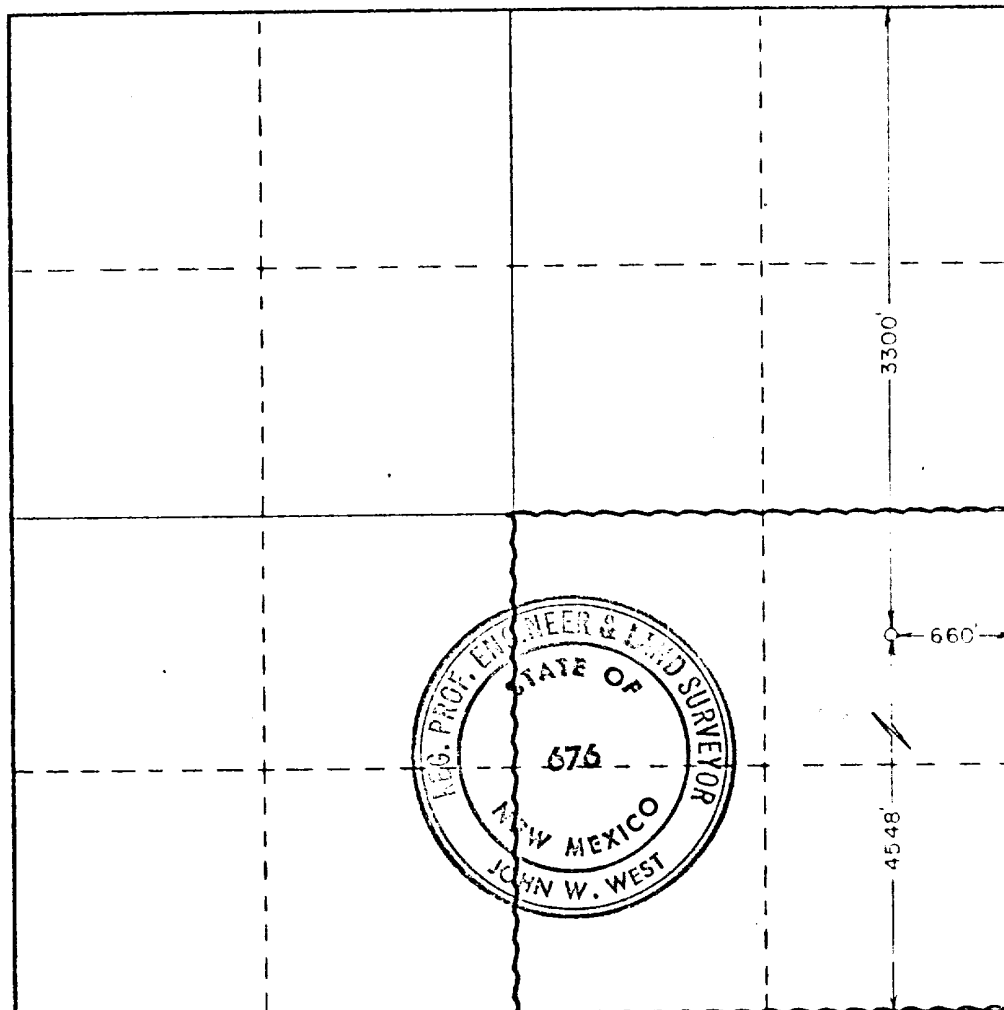
Operator AMOCO PRODUCTION COMPANY		Lease STATE "C" TRACT 11		Well No. 5
Tract Letter 1	Section 2	Township 21 South	Range 36 East	County Lea
Actual Surface Location of Well: 3300 feet from the North line and 660 feet from the East line				
Ground Level Elev. 3509.0	Producing Formation GRAYBURG-QUEEN	Pool EDMONT QUEEN	Dedicated Acreage 160	

1. Outline the acreage dedicated to the subject well by colored pencil or hachure marks on the plat below.
2. If more than one lease is dedicated to the well, outline each and identify the ownership thereof (both as to working interest and royalty).
3. If more than one lease of different ownership is dedicated to the well, have the interests of all owners been consolidated by communitization, unitization, force-pooling, etc?

☐ Yes ☐ No If answer is "yes," type of consolidation _____

If answer is "no," list the owners and tract descriptions which have actually been consolidated. (Use reverse side of this form if necessary.) _____

No allowable will be assigned to the well until all interests have been consolidated (by communitization, unitization, forced-pooling, or otherwise) or until a non-standard unit, eliminating such interests, has been approved by the Commission.



CERTIFICATION

I hereby certify that the information contained herein is true and complete to the best of my knowledge and belief.

Name **Ray W. Cox**
Position **Administrative Assistant**

Company **AMOCO PRODUCTION COMPANY**

Date **4-18-77**

I hereby certify that the well location shown on this plat was plotted from field notes of actual surveys made by me or under my supervision, and that the same is true and correct to the best of my knowledge and belief.

Date Surveyed **April 15, 1977**

Registered Professional Engineer and/or Land Surveyor

John W. West

Certificate No. **676**

0 330 660 990 1320 1650 1980 2310 2640 2970 3300

RECEIVED

APR 16 1977

OIL CONSERVATION COMM.
ROBBS, N. M.

ATTACHMENT "B"
NOTES

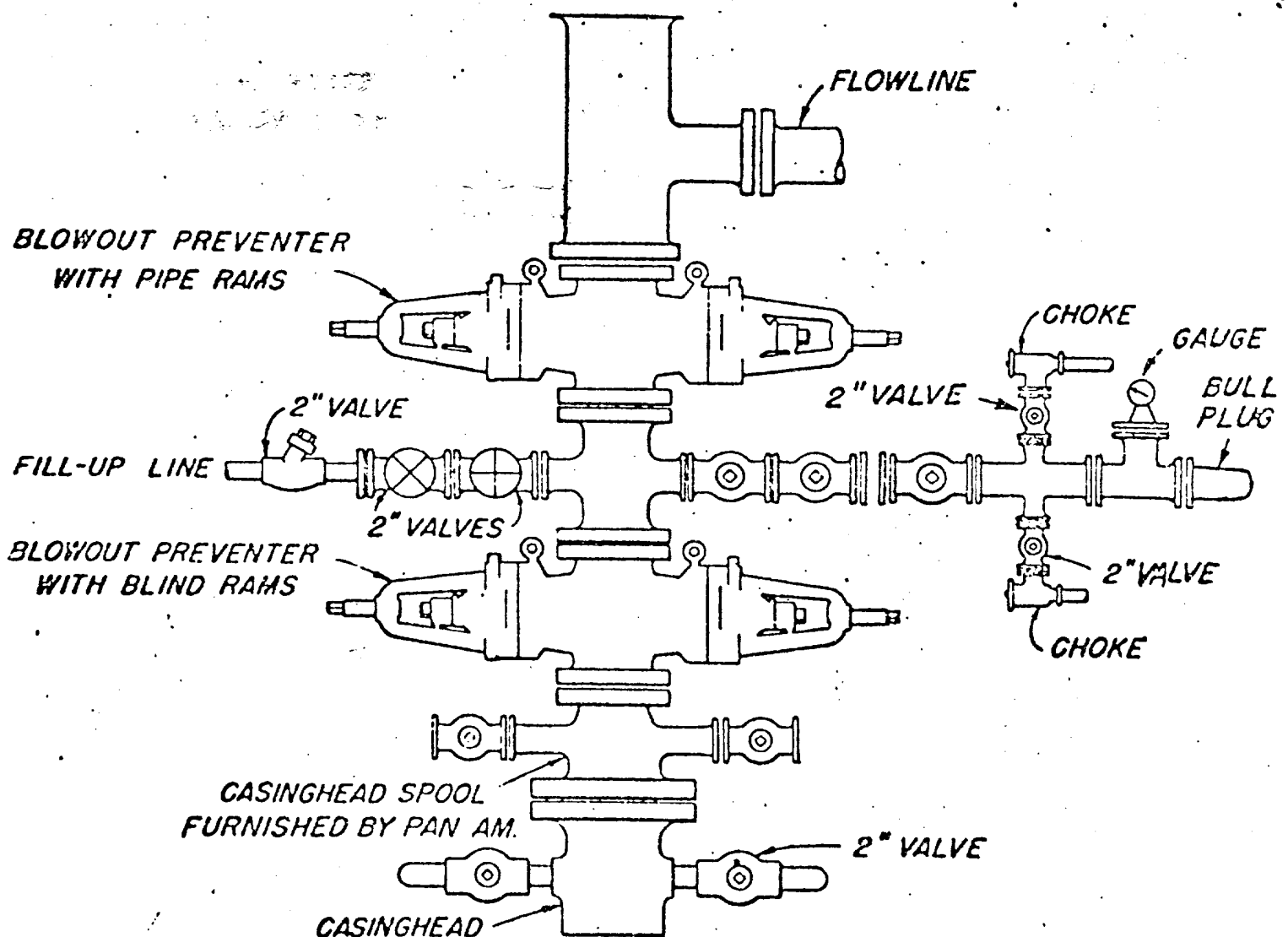
1. Blow-out preventers and master valve to be fluid operated and all fittings must be in good condition, 3,000# W.P. (6,000 p.s.i. test), minimum.
2. Equipment through which bit must pass shall be as large as the inside diameter of the casing that is being drilled through.
3. Nipple above blow-out preventer shall be same size as casing being drilled through.
4. Kelly cock required, 3,000# W.P. (6,000 p.s.i. test), minimum.
5. OMSCO or comparable safety valve must be available on rig floor at all times with proper connection or sub, 3,000# W.P. (6,000 p.s.i. test), minimum.
6. Blow-out preventers and master valve while drilling intermediate hole to 6,000' may be 2,000# W.P. (4,000 p.s.i. test), minimum.
7. Choke assembly, beyond second valve from cross, may be positioned (Optional) outside of derrick foundation.
8. Spool or cross may be eliminated if connections are available in the lower part of the blow-out preventer body.
9. Plug valves - gate valves are optional. Valves shown as 2" are minimum size.
10. Casing head and casing head spool, including attached valves, to be furnished by Pan American.
11. Rams in preventers will be installed as follows:

When drilling, use:

Top Preventer - Drill pipe rams
Bottom Preventer - Blind rams or master valve

When running casing, use:

Top Preventer - Casing rams
Bottom Preventer - Blind rams or master valve.



BLOWOUT PREVENTER HOOK-UP
PAN AMERICAN PETROLEUM CORP.

EXHIBIT D-1 MODIFIED

JUNE 1, 1962

113

RECEIVED

APR 19 1977

OIL CONSERVATION COMM.
HOBBS, N. M.