

ILLEGIBLE

NEW MEXICO OIL CONSERVATION COMMISSION
WELL LOCATION AND ACREAGE DEDICATION PLAT

Form O-102
Supersedes L-12H
Effective 1-1-65

All distances must be from the outer boundaries of the Section

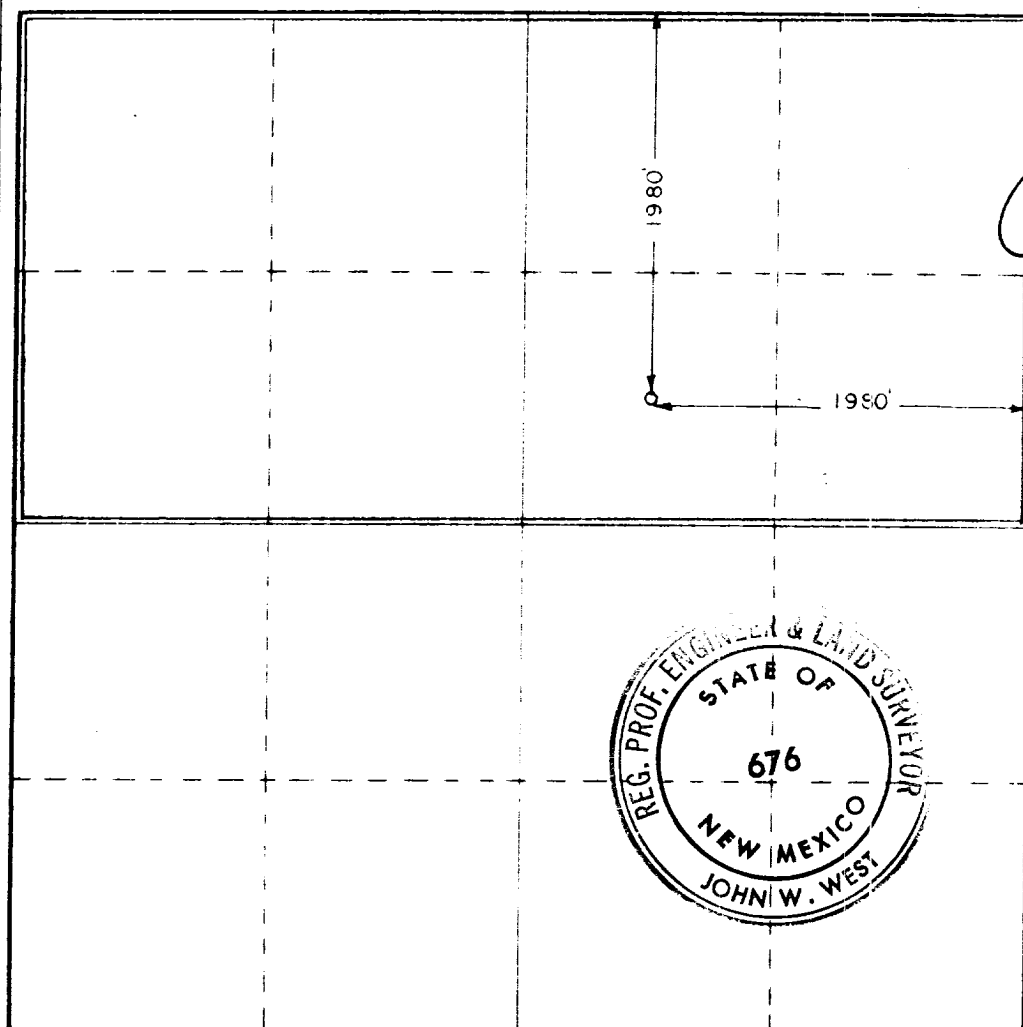
Operator Union Oil Co. of California			Lease Halfway Fed.			Well No. 1		
Unit Letter G	Section 9	Township 21 South		Range 32 East	County Lea			
Actual Footage Location of Well: 1980 feet from the North line and 1980 feet from the East line								
Ground Level Elev. 3733.1	Producing Formation Morrow		Pool UNDESIGNATED Red Mesa Morrow Gas		Dedicated Acreage: 320			

1. Outline the acreage dedicated to the subject well by colored pencil or hatchure marks on the plat below.
2. If more than one lease is dedicated to the well, outline each and identify the ownership thereof (both as to working interest and royalty).
3. If more than one lease of different ownership is dedicated to the well, have the interests of all owners been consolidated by communitization, unitization, force-pooling, etc?

☐ Yes ☐ No If answer is "yes," type of consolidation _____

If answer is "no," list the owners and tract descriptions which have actually been consolidated. (Use reverse side of this form if necessary.) _____

No. allowable will be assigned to the well until all interests have been consolidated (by communitization, unitization, forced-pooling, or otherwise) or until a non-standard unit, eliminating such interests, has been approved by the Commission.



CERTIFICATION

I hereby certify that the information contained herein is true and complete to the best of my knowledge and belief

J. R. Hughes
Name
J. R. Hughes

Position
District Drilling Supt.

Company
Union Oil Co. of California

Date
February 15, 1978

I hereby certify that the well location shown on this plat was plotted from field notes of actual surveys made by me or under my supervision, and that the same is true and correct to the best of my knowledge and belief

Date Surveyed
1/7/78

Registered Professional Engineer
and/or Land Surveyor

John W. West
Certificate No. **John W. West 676**
Ronald J. Eidson 3239