

NEW MEXICO OIL CONSERVATION COMMISSION
WELL LOCATION AND ACREAGE DEDICATION PLAT

Form C-102
Supersedes C-128
Effective 1-1-55

All distances must be from the outer boundaries of the Section.

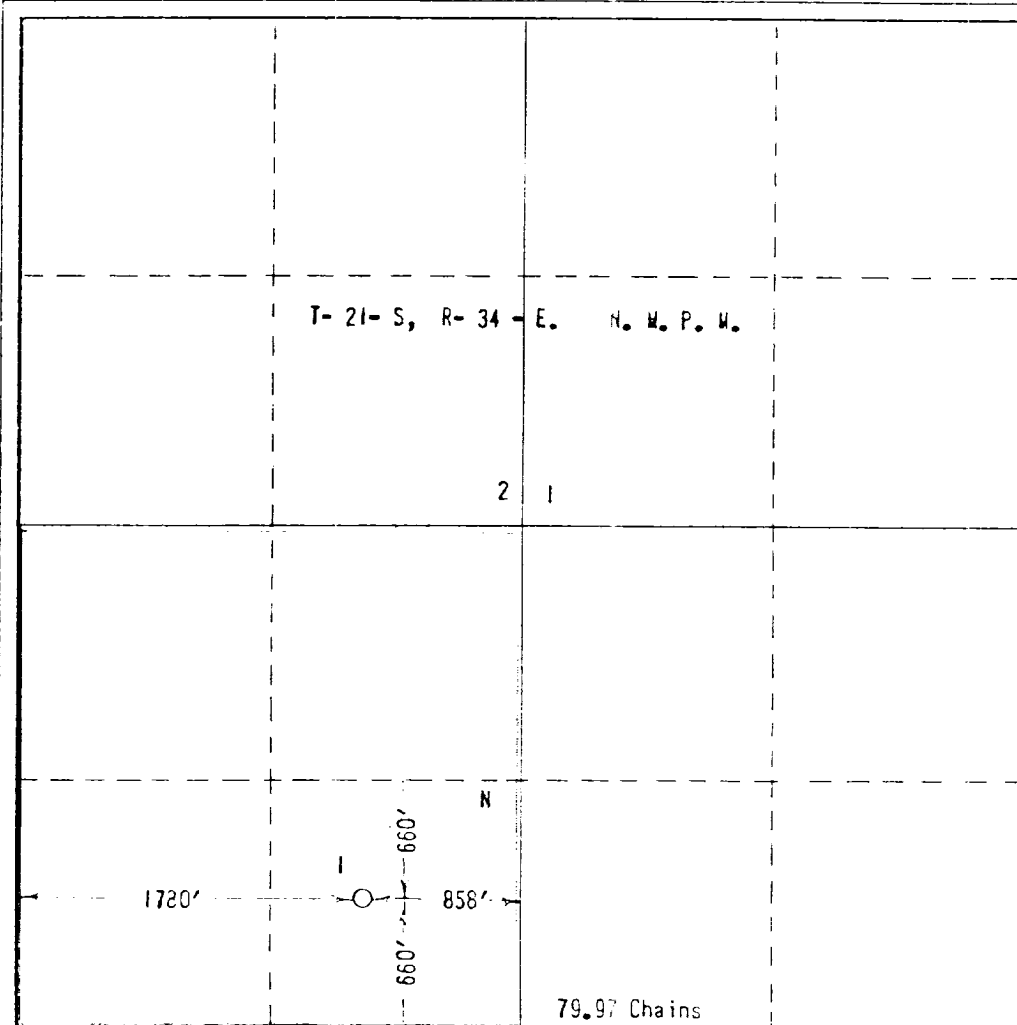
Pogo Producing Company			Lease State L-921		Well No. 1
North Line N	Section 21	Township 21-S	Range 34-E	County LEA	
Actual Footage Location of Well: 660' feet from the South line and 1780' feet from the West line					
Ground Level Elev. 3716	Producing Formation Delaware (6000')	Pool Wildcat		Dedicated Acreage: 160 Acres	

1. Outline the acreage dedicated to the subject well by colored pencil or hatchure marks on the plat below.
2. If more than one lease is dedicated to the well, outline each and identify the ownership thereof (both as to working interest and royalty).
3. If more than one lease of different ownership is dedicated to the well, have the interests of all owners been consolidated by communitization, unitization, force-pooling, etc?

☐ Yes ☐ No If answer is "yes," type of consolidation _____

If answer is "no," list the owners and tract descriptions which have actually been consolidated. (Use reverse side of this form if necessary.) _____

No allowable will be assigned to the well until all interests have been consolidated (by communitization, unitization, forced-pooling, or otherwise) or until a non-standard unit, eliminating such interests, has been approved by the Commission.



CERTIFICATION

I hereby certify that the information contained herein is true and complete to the best of my knowledge and belief.

Name	Vice President
Position	Pogo Producing Company
Company	May 16, 1978
Date	

I hereby certify that the location shown on this plat was plotted from field notes of actual surveys made by me or under my supervision, and that the same is true and correct to the best of my knowledge and belief.

REGISTERED PROFESSIONAL ENGINEER
LAND SURVEYOR
STATE OF NEW MEXICO
No. 3858
WILSON D. WATSON, JR.
4-18-78

Date Surveyed	<i>Wilson D. Watson Jr.</i>
Registered Professional Engineer and/or Land Surveyor	W. D. Watson Jr.
Certificate No.	3959