

UNITED STATES
DEPARTMENT OF THE INTERIOR
GEOLOGICAL SURVEY

APPLICATION FOR PERMIT TO DRILL, DEEPEN, OR PLUG BACK

1a. TYPE OF WORK

DRILL ☒DEEPEN ☐PLUG BACK ☐

b. TYPE OF WELL

OIL
WELL ☐GAS
WELL ☒OTHER ☐SINGLE
ZONE ☒MULTIPLE
ZONE ☐

2. NAME OF OPERATOR

Cleary Petroleum Corporation

3. ADDRESS OF OPERATOR

P. O. Drawer 2358, Midland, Texas 79702

4. LOCATION OF WELL (Report location clearly and in accordance with any State requirements.)

At surface

1980' FWL & 4650' FSL

At proposed prod. zone

14. DISTANCE IN MILES AND DIRECTION FROM NEAREST TOWN OR POST OFFICE*

5 miles SE of Halfway, New Mexico

15. DISTANCE FROM PROPOSED*

LOCATION TO NEAREST
PROPERTY OR LEASE LINE, FT.
(Also to nearest drlg. unit line, if any)

660' to lease line

630' to unit line

16. NO. OF ACRES IN LEASE

320 (Comm.)

17. NO. OF ACRES ASSIGNED
TO THIS WELL

320

18. DISTANCE FROM PROPOSED LOCATION*

TO NEAREST WELL, DRILLING, COMPLETED,
OR APPLIED FOR, ON THIS LEASE, FT.

2965.15'

19. PROPOSED DEPTH

14,300'

20. ROTARY OR CABLE TOOLS

Rotary

21. ELEVATIONS (Show whether DF, RT, GR, etc.)

3668' GR

22. APPROX. DATE WORK WILL START*

6-26-78

23.

PROPOSED CASING AND CEMENTING PROGRAM

SIZE OF HOLE	SIZE OF CASING	WEIGHT PER FOOT	SETTING DEPTH	QUANTITY OF CEMENT
17 1/2"	13 3/8"	54.5#	470'	650 (circulate)
12 1/2"	9 5/8"	43.5 & 40#	5200'	2335 (circulate - 2 stages)
7 7/8"	5 1/2"	17 & 20#	14300'	875

See attached sheet for casing and cementing programs. The well will be drilled to a depth of 14,300' to test the Morrow Sands. Dual 1500 series ram type blowout preventers and one Hydril will be used.

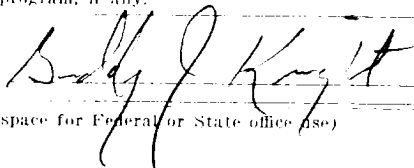
NSL Order No R-5716

SEE ATTACHED FOR
CONDITIONS OF APPROVAL"APPROVAL TO FLARE GRANTED
WHILE DRILLING AND TESTING."

IN ABOVE SPACE DESCRIBE PROPOSED PROGRAM: If proposal is to deepen or plug back, give data on present productive zone and proposed new productive zone. If proposal is to drill or deepen directionally, give pertinent data on subsurface locations and measured and true vertical depths. Give blowout preventer program, if any.

24.

SIGNED



TITLE

District Production Mgr.

DATE

5-15-78

(This space for Federal or State office use)

PERMIT NO.

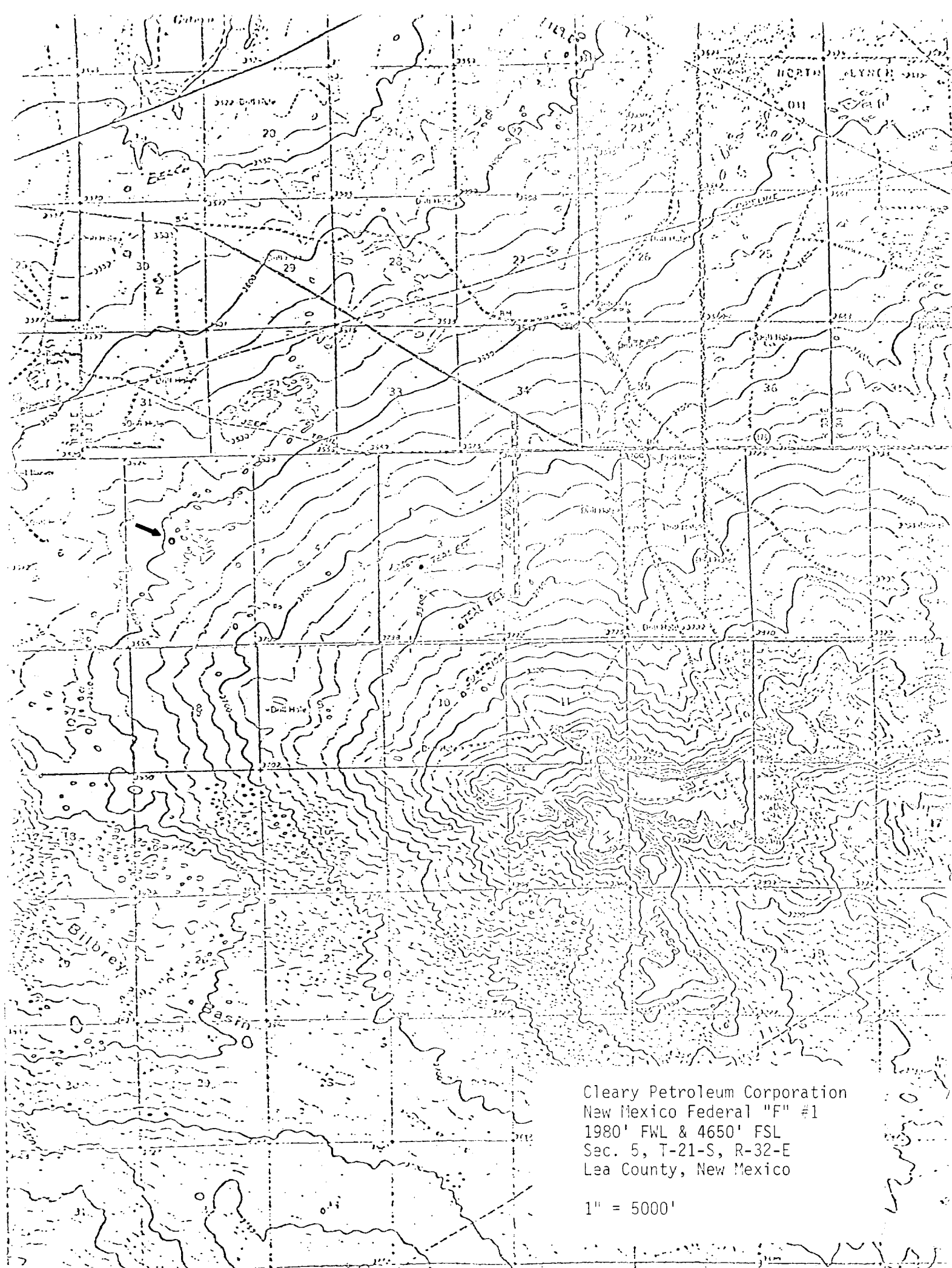
APPROVAL DATE

APPROVED BY

TITLE

DATE

CONDITIONS OF APPROVAL, IF ANY:



Cleary Petroleum Corporation
New Mexico Federal "F" #1
1980' FWL & 4650' FSL
Sec. 5, T-21-S, R-32-E
Lea County, New Mexico

1" = 5000'